

AT REGENCY INDUSTRIAL PARK

**±3 - 8 AC OPTIONS AVAILABLE | BUILT-TO-SUIT OPPORTUNITY**



**ESTIMATED DELIVERY Q2 2024**

## PROPERTY DETAILS

- + 2,200 SF Office Trailer
- + Multi-Tenant or Single-Tenant
  - + 3 AC - 8 AC
- + 2 points of ingress & egress
- + 253+/- trailer stalls per site plan shown
- + New fencing & heavy duty gravel
- + New LED site lighting

## HIGHLIGHTS

- + Class A IOS Facility
- + I-4, Heavy Industrial Zoning - Orange County
- + Build-to-suit opportunities
- + Endless outdoor storage capabilities
- + In-fill location
- + Great highway accessibility

### CONTACT US

**JEROD FREELAND | VICE PRESIDENT**  
321.591.5404  
jerod.freeland@foundrycommercial.com

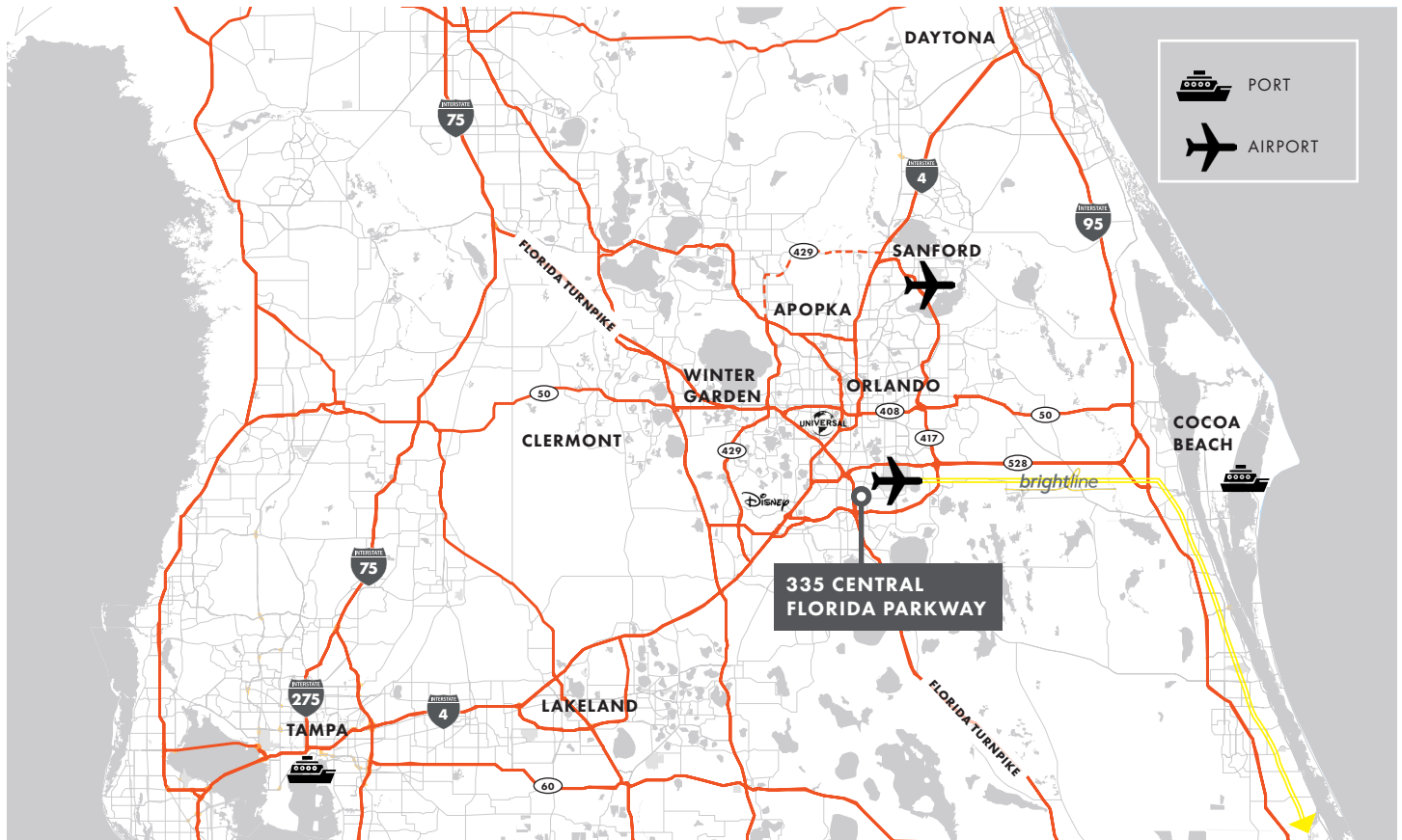
**JUSTIN RUBY, SIOR, CCIM | PARTNER**  
407.865.0311  
justin.ruby@foundrycommercial.com

**CHARLES ATTAWAY | ASSOCIATE**  
407.963.4064  
charles.attaway@foundrycommercial.com

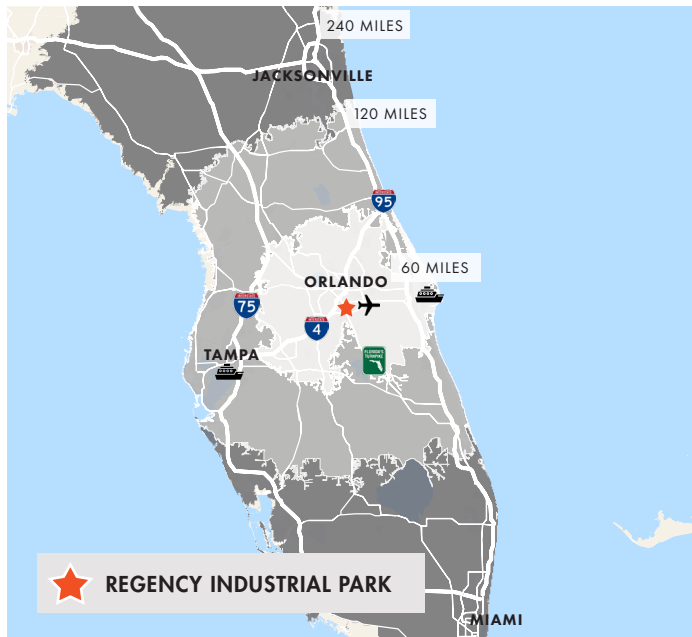
# REGENCY INDUSTRIAL PARK

335 Central Florida Pkwy, Orlando, FL 32824

## ACCESS MAP



## DRIVE TIME MAP



## DRIVE TIME TO CITIES

Disney	15 min
Downtown Orlando	18 min
Winter Garden	20 min
Kissimmee	23 min
Apopka	25 min
Winter Park	26 min
Longwood	30 min
Sanford	45 min
Port Canaveral	50 min
Lakeland	50 min
Daytona Beach	65 min
Ocala	75 min
Tampa	85 min

## CONTACT US

**JEROD FRELAND | VICE PRESIDENT**  
321.591.5404  
jerod.freland@foundrycommercial.com

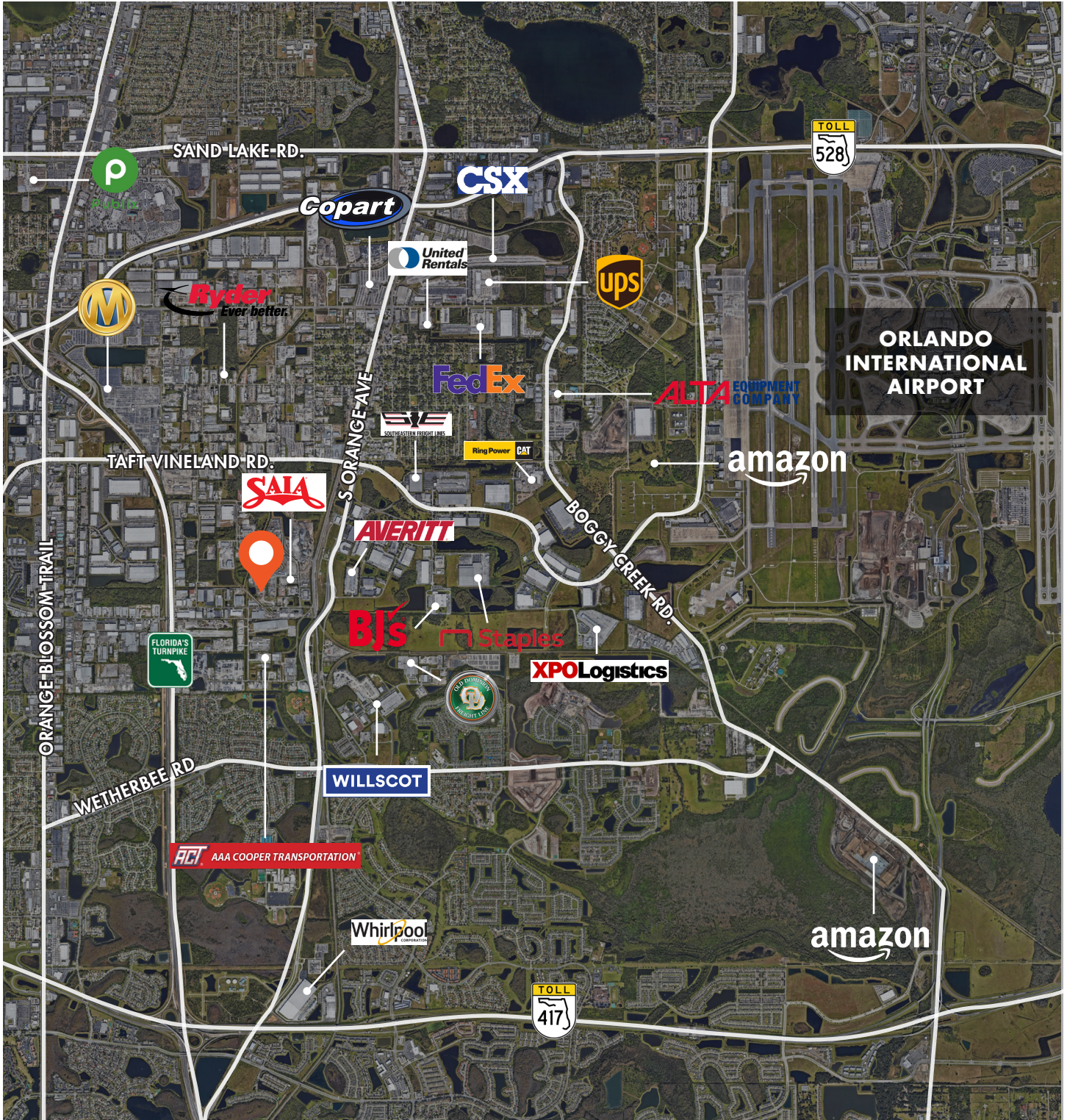
**JUSTIN RUBY, SIOR, CCIM | PARTNER**  
407.865.0311  
justin.ruby@foundrycommercial.com

**CHARLES ATTAWAY | ASSOCIATE**  
407.963.4064  
charles.attaway@foundrycommercial.com

# REGENCY INDUSTRIAL PARK

335 Central Florida Pkwy, Orlando, FL 32824

## LOCAL MAP



### CONTACT US

**JEROD FREELAND | VICE PRESIDENT**  
321.591.5404  
jerod.freeland@foundrycommercial.com

**JUSTIN RUBY, SIOR, CCIM | PARTNER**  
407.865.0311  
justin.ruby@foundrycommercial.com

**CHARLES ATTAWAY | ASSOCIATE**  
407.963.4064  
charles.attaway@foundrycommercial.com