

415 E. Congress Pkwy #E
Crystal Lake, IL 60014

**For Sale
Or Lease**

MLS #12040062

END UNIT CONDO



END UNIT CONDO 2,056 SF

SALE: REDUCED \$343,000
LEASE: \$15.50 SF (NNN)

END UNIT CONDO for Sale or Lease
Professional / Medical Office (build out required)

Suite E: 2,056 SF located in Crystal Lake's desirable Northwest Professional Center, this beautiful condo end unit has three walls of windows. Can be built out to accommodate any professional or medical uses. Convenient parking located directly adjacent unit. Tenant improvement allowance negotiable for qualified tenant.

Specifications

Size:	2,056 SF
Year Built:	2008
HVAC System:	GFA
Electrical:	200 amp
Sprinklers:	Yes
Washrooms:	2 ADA
Ceiling Height:	9 ft
Parking:	Common
Sewer/Water:	City
Zoning:	M PUD
Taxes:	\$7,119.84 (2022) \$3.46 psf
CAM:	\$381.15/mo. \$2.22 psf
PIN #:	19-04-403-023

Demographics	1 Mile	3 Miles	5 Miles
Total Population	3,908	46,623	118,782
Average HH Income	\$97,768	\$102,778	\$113,246

[CLICK HERE TO VIEW OUR WEBSITE](#)

No warranty or representation is made as to the accuracy of the foregoing information. Terms of sale or lease and availability are subject to change or withdrawal without notice. This document is for information purposes only. No offer of sub-agency is being made.



VP / Designated Managing Broker
Heather Schweitzer
HeatherS@PremierCommercialRealty.com
O: 847.854.2300 x15 C: 815.236.9816

415 E. Congress Pkwy #E
Crystal Lake, IL 60014

For Sale
Or Lease

END UNIT CONDO



[CLICK HERE TO VIEW OUR WEBSITE](#)

No warranty or representation is made as to the accuracy of the foregoing information. Terms of sale or lease and availability are subject to change or withdrawal without notice. This document is for information purposes only. No offer of sub-agency is being made.

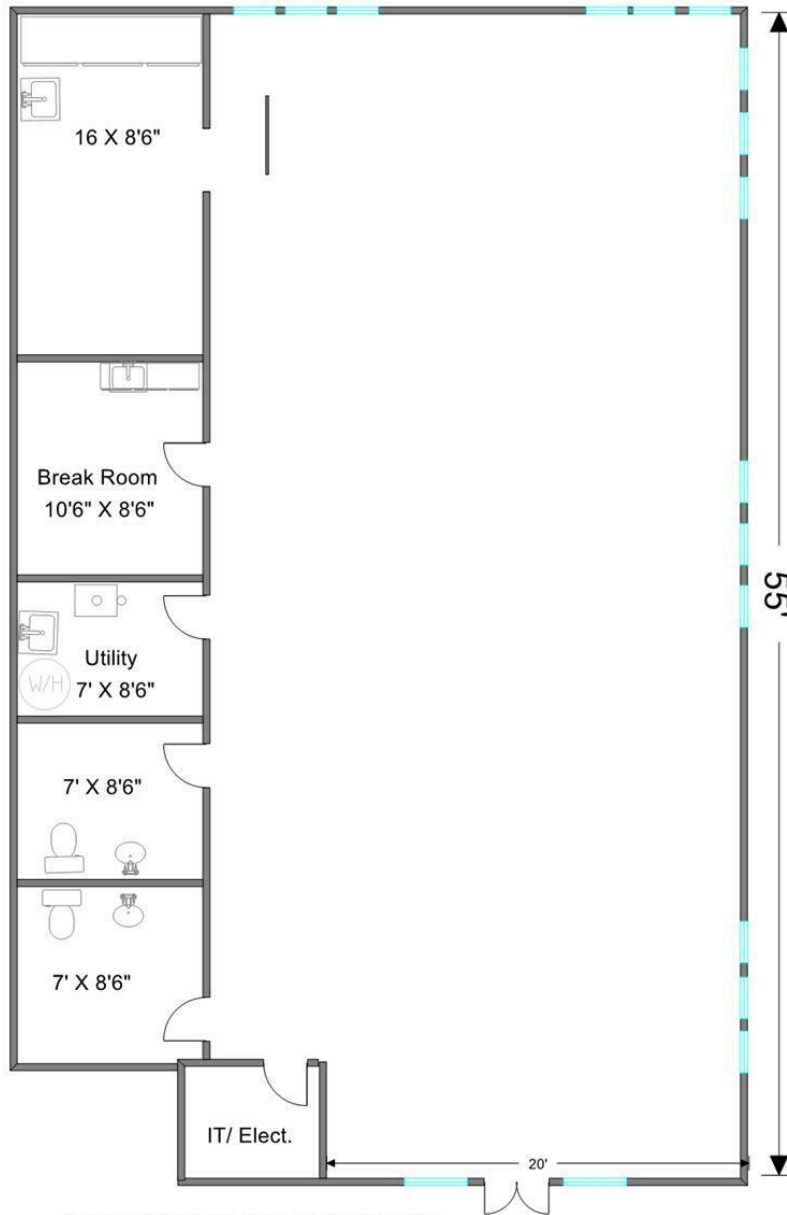


VP / Designated Managing Broker
Heather Schweitzer
HeatherS@PremierCommercialRealty.com
O: 847.854.2300 x15 C: 815.236.9816

www.PremierCommercialRealty.com | 847.854.2300 | 9225 S. Route 31, Lake in the Hills, IL 60156

END UNIT CONDO

SUITE E : 2,056 SF



ALL MEASUREMENTS APPROXIMATE

[CLICK HERE TO VIEW OUR WEBSITE](#)

No warranty or representation is made as to the accuracy of the foregoing information. Terms of sale or lease and availability are subject to change or withdrawal without notice. This document is for information purposes only. No offer of sub-agency is being made.

