

For Sale

10024 & 10026 Davis Road,  
Temple Terrace, FL 33637

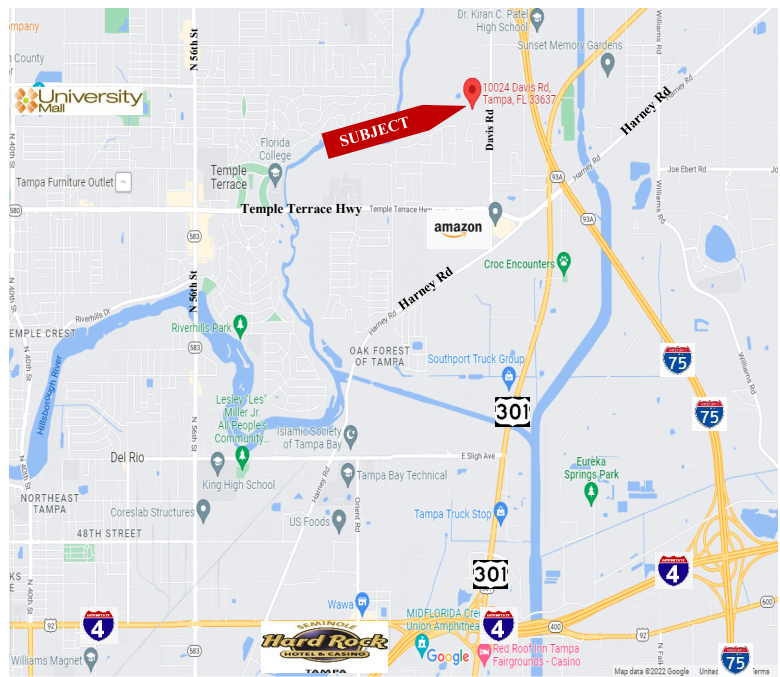
**RESIDENTIAL DEVELOPMENT SITE**



**FEATURES**

- ❖ 6.7 acres (MOL)
- ❖ 322' Frontage on Davis Rd
- ❖ Property borders along the city of Temple Terrace line (possible annexation)
- ❖ Zoning: R-7(North parcel) and ASC-1(South parcel)
- ❖ All Utilities to site located at Davis Rd
- ❖ Within 4 miles of University of South Florida
- ❖ New Amazon distribution center located 1.5 miles from site
- ❖ Flood Zone X
- ❖ Sold together only
- ❖ Folio #: 037534.0000 (Parcel 1)  
037531.5000 (Parcel 2)
- ❖ **Asking Price: \$1,290,000.00**

**LOCATION MAP**

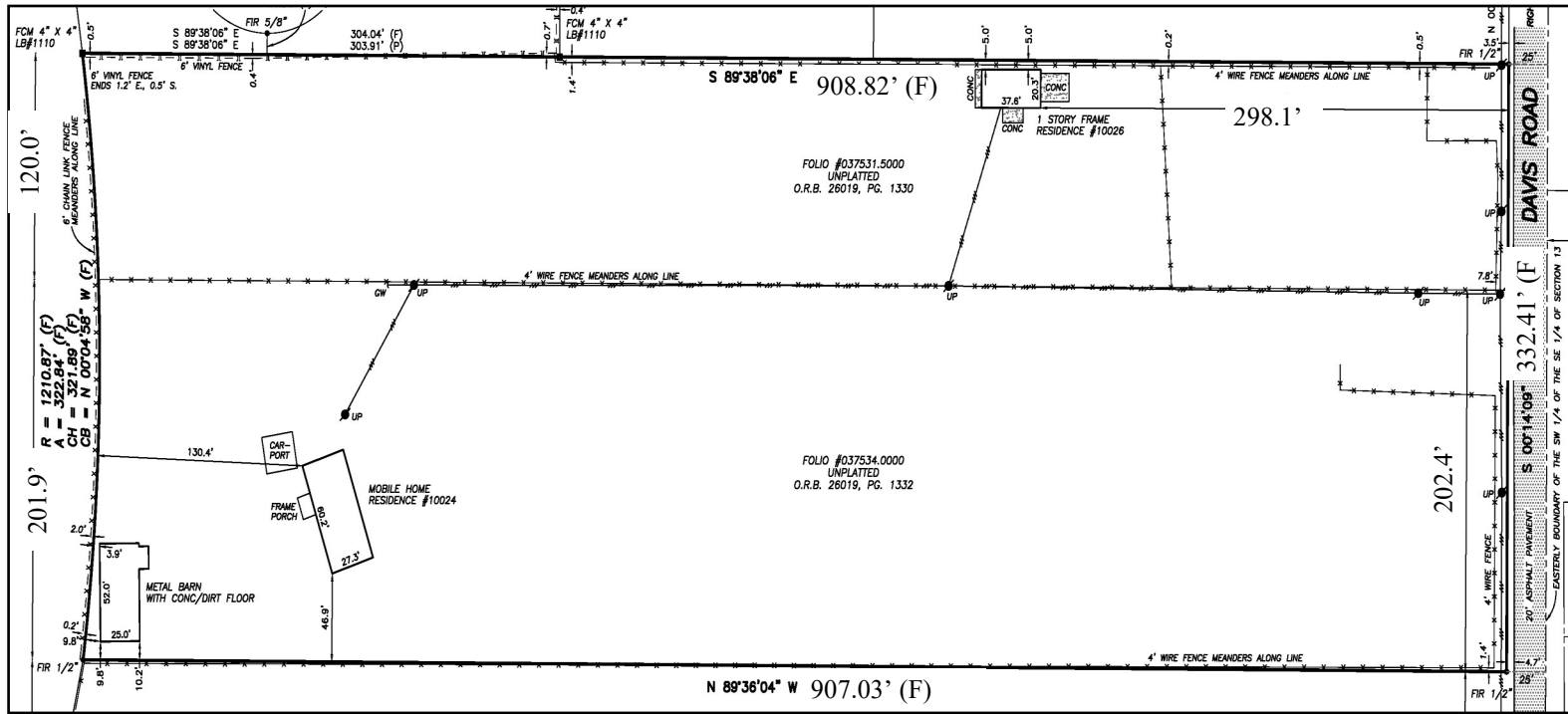


Elliott M. Ross, CCIM  
O: 813.755.6700  
C: 727.639.3800  
elliott@rossrealtytampabay.com

**ROSS REALTY GROUP, INC.**  
Henderson Centre  
3902 Henderson Blvd., Suite 203  
Tampa, FL 33629

For Sale

10024 & 10026 Davis Road,  
Temple Terrace, FL 33637



Any information given herein is obtained from sources considered reliable. However, we are not responsible for misstatement of facts, errors, omissions, prior sale, withdrawal from market, modification of mortgage commitment, terms and considerations, or change in price without notice. The information supplied herein is for informational purposes only and shall not contain a warranty or assurance that said information is correct. Any person intending to rely upon the information supplied herein should verify said information independently.