

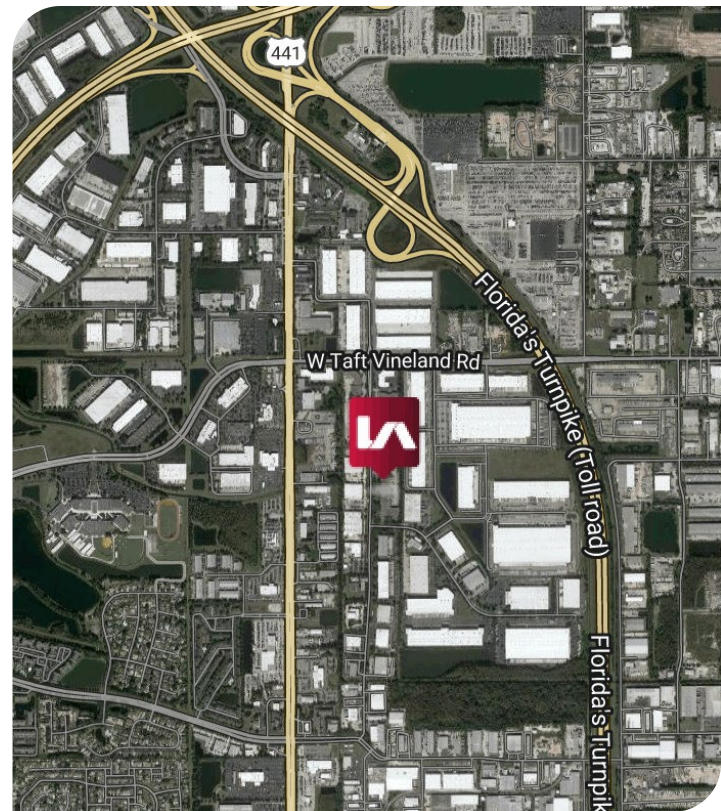
# FOR LEASE CYPRESS PARK

9777 SATELLITE BOULEVARD, ORLANDO, FL 32837



## PROPERTY HIGHLIGHTS

- End cap space available in Class A building strategically located near the Florida Turnpike and SR-528
- Available: Total 31,886 SF
  - Suites 200 & 220: 31,886 SF
  - 1,430 SF Office
  - 6 Dock High Doors
  - 1 Drive in Ramp
- **-\$10.25/SF NNN**
- Building Size: 72,700 SF
- Clear Height: 19'
- Column Spacing: 40' x 40'
- Zoned: I-4, Orange Country
- Operating Expenses: \$3.24/SF



### Leasing Contact:

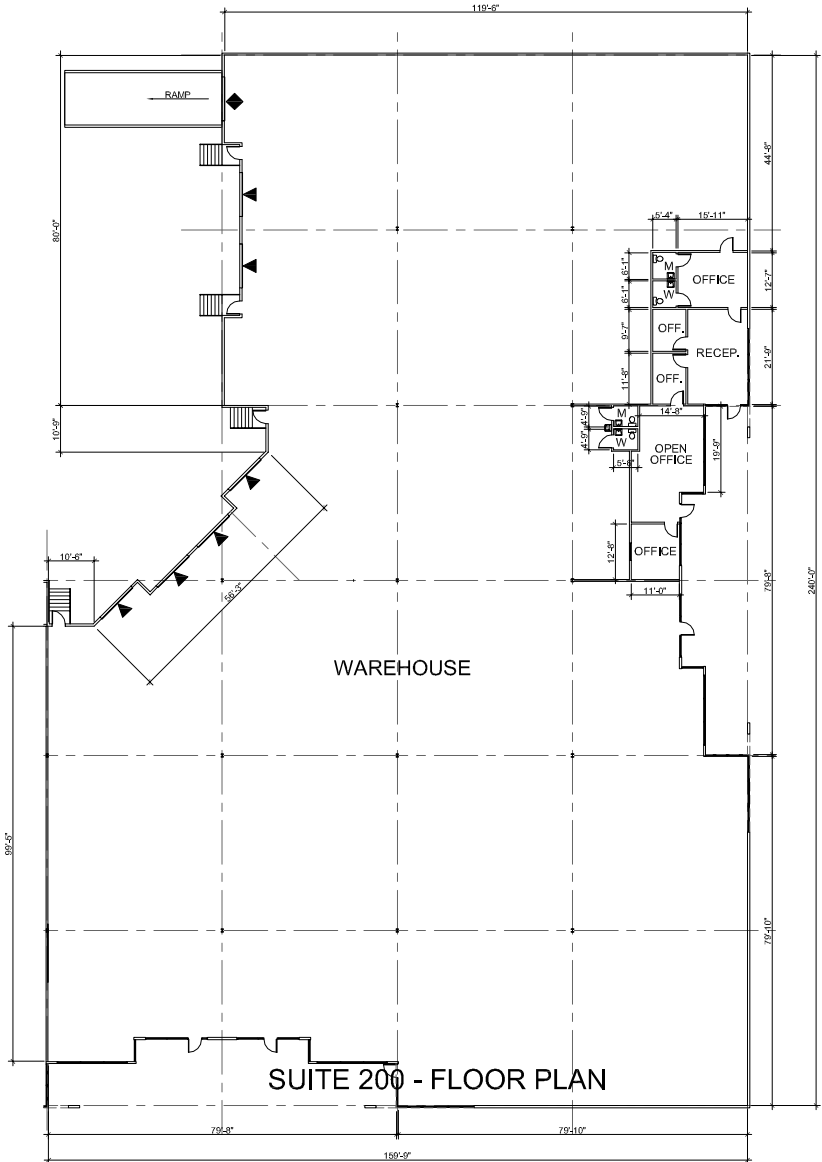
Ryan Griffith  
Vice President  
rgriffith@lee-associates.com  
D 321.281.8512

Derek Riggleman, SIOR  
Senior Vice President | Principal  
driggleman@lee-associates.com  
D 321.281.8507

9777 SATELLITE BOULEVARD  
ORLANDO, FL 32837



SUITES 200 & 220 | 31,886 SF



Leasing Contact:

Ryan Griffith  
Vice President  
rgriffith@lee-associates.com  
D 321.281.8512

Derek Riggleman, SIOR  
Senior Vice President | Principal  
driggleman@lee-associates.com  
D 321.281.8507

All information furnished regarding property for sale, rental or financing is from sources deemed reliable, but no warranty or representation is made to the accuracy thereof and same is submitted to errors, omissions, change of price, rental or other conditions prior to sale, lease or financing or withdrawal without notice. No liability of any kind is to be imposed on the broker herein.



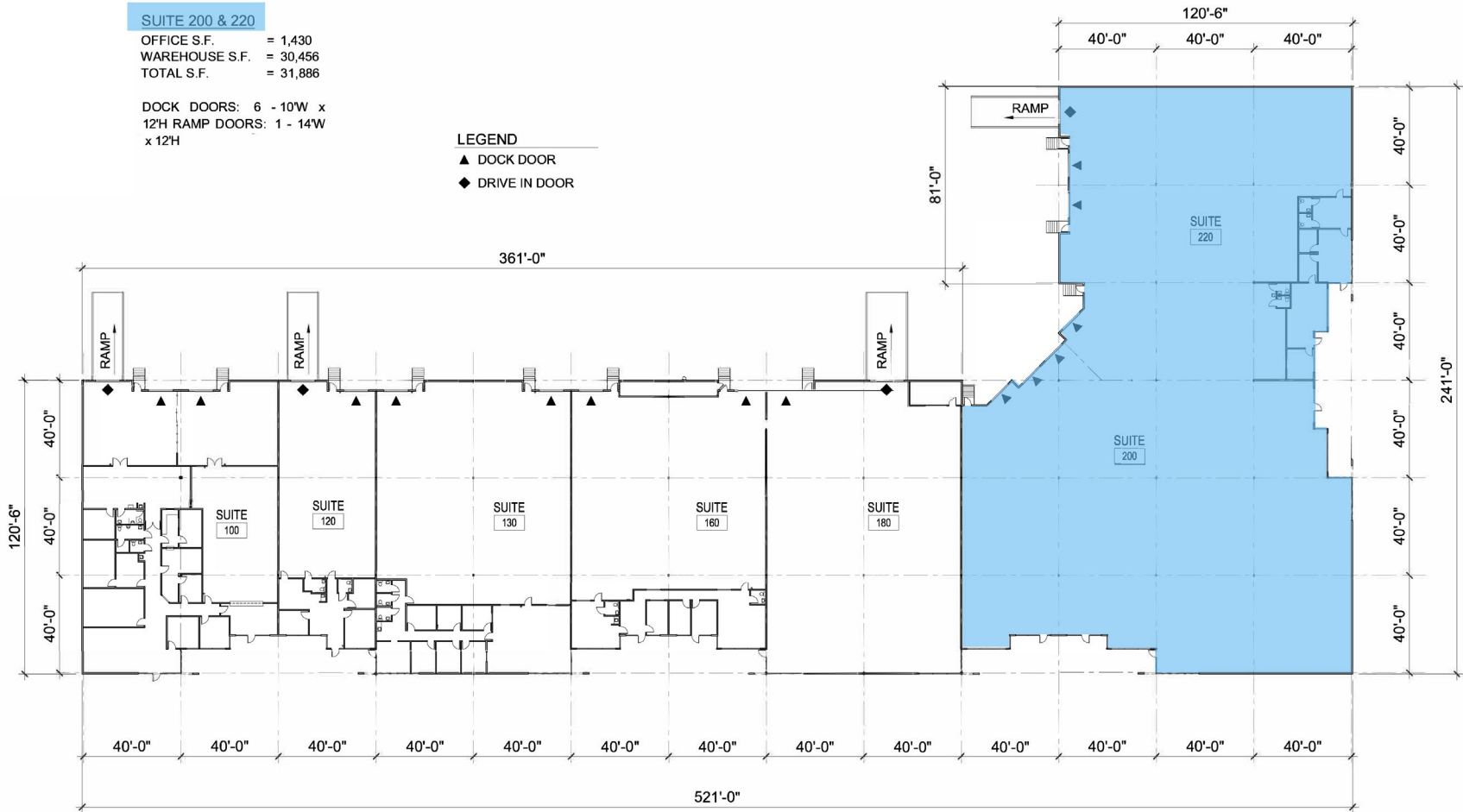
# 9777 SATELLITE BOULEVARD

ORLANDO, FL 32837

**SUITE 200 & 220**  
 OFFICE S.F. = 1,430  
 WAREHOUSE S.F. = 30,456  
 TOTAL S.F. = 31,886

DOCK DOORS: 6 - 10'W x 12'H RAMP DOORS: 1 - 14'W x 12'H

**LEGEND**  
 ▲ DOCK DOOR  
 ◆ DRIVE IN DOOR



**Leasing Contact:**

Ryan Griffith  
 Vice President  
 rgriffith@lee-associates.com  
 D 321.281.8512

Derek Riggelman, SIOR  
 Senior Vice President | Principal  
 driggelman@lee-associates.com  
 D 321.281.8507

All information furnished regarding property for sale, rental or financing is from sources deemed reliable, but no warranty or representation is made to the accuracy thereof and same is submitted to errors, omissions, change of price, rental or other conditions prior to sale, lease or financing or withdrawal without notice. No liability of any kind is to be imposed on the broker herein.