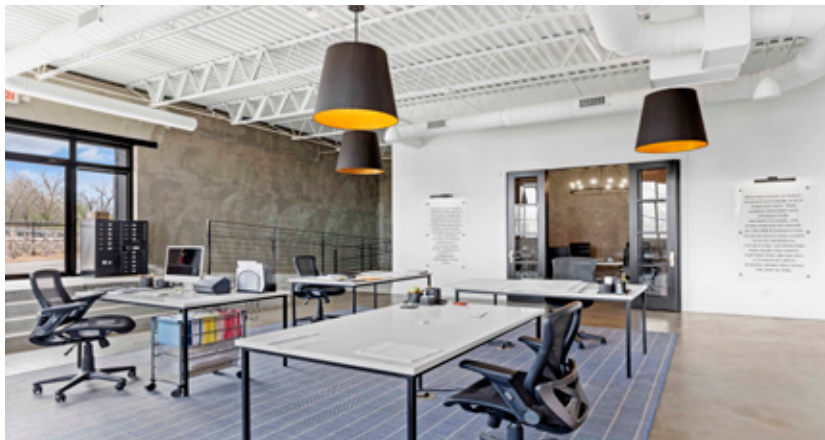


★ ★ ★ ★ ★ LINESIDE

LOFT OFFICE FOR LEASE
SUITES FROM ±1,000 SF

LINESIDE

1500 Marietta Road
Atlanta, Georgia 30318

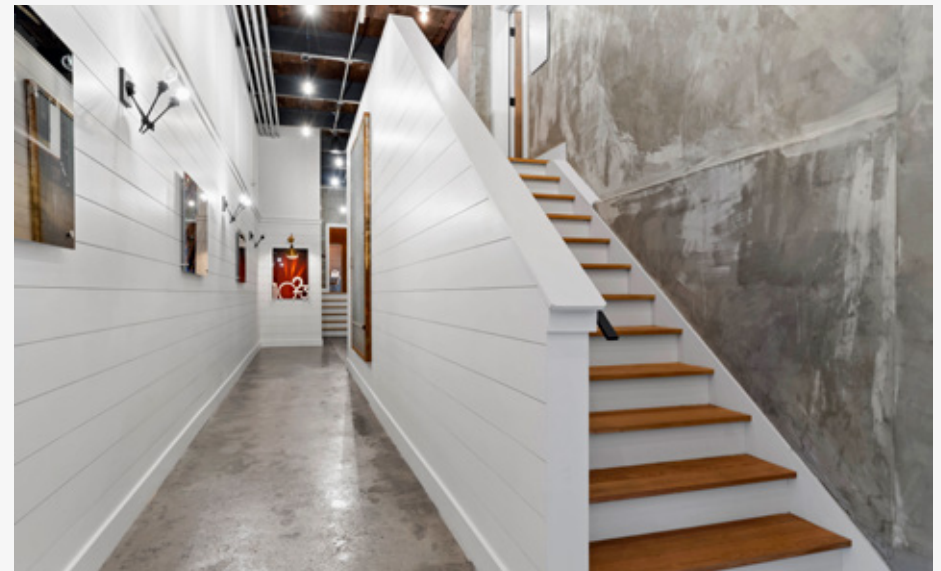


- ☆ Studio spaces from ± 1,000 SF
- ☆ Individually controlled utilities
- ☆ 3.4/1,000 parking ratio
- ☆ Full kitchenette in each suite
- ☆ > .5 Mi to Westside Park
- ☆ Direct suite access
- ☆ Beautiful finishes
- ☆ High ceilings
- ☆ Large shared courtyard

★ ★ ★ ★ ★ LINESIDE BUILDING OVERVIEW



Lineside is nestled in Atlanta's Upper Westside neighborhood, just west of I-75 between West Midtown and Buckhead. Initially developed as an industrial hub in the early 19th century, the Upper Westside neighborhood has experienced exponential growth as a vibrant office, retail, dining, and entertainment destination. With significant infrastructure improvement on the horizon and a constantly growing roster of amenities including Topgolf, the BeltLine, Silver Comet Trail, and the Westside Reservoir Park, the Upper Westside is a flourishing neighborhood, ideal for the best and brightest companies and employees looking for a new home.



"No warranty or representation, express or implied, is made as to the information contained herein, and the same is submitted subject to errors, omissions, change of price, rental, or other conditions, withdrawal without notice, and to any special listing conditions, imposed by our principals."



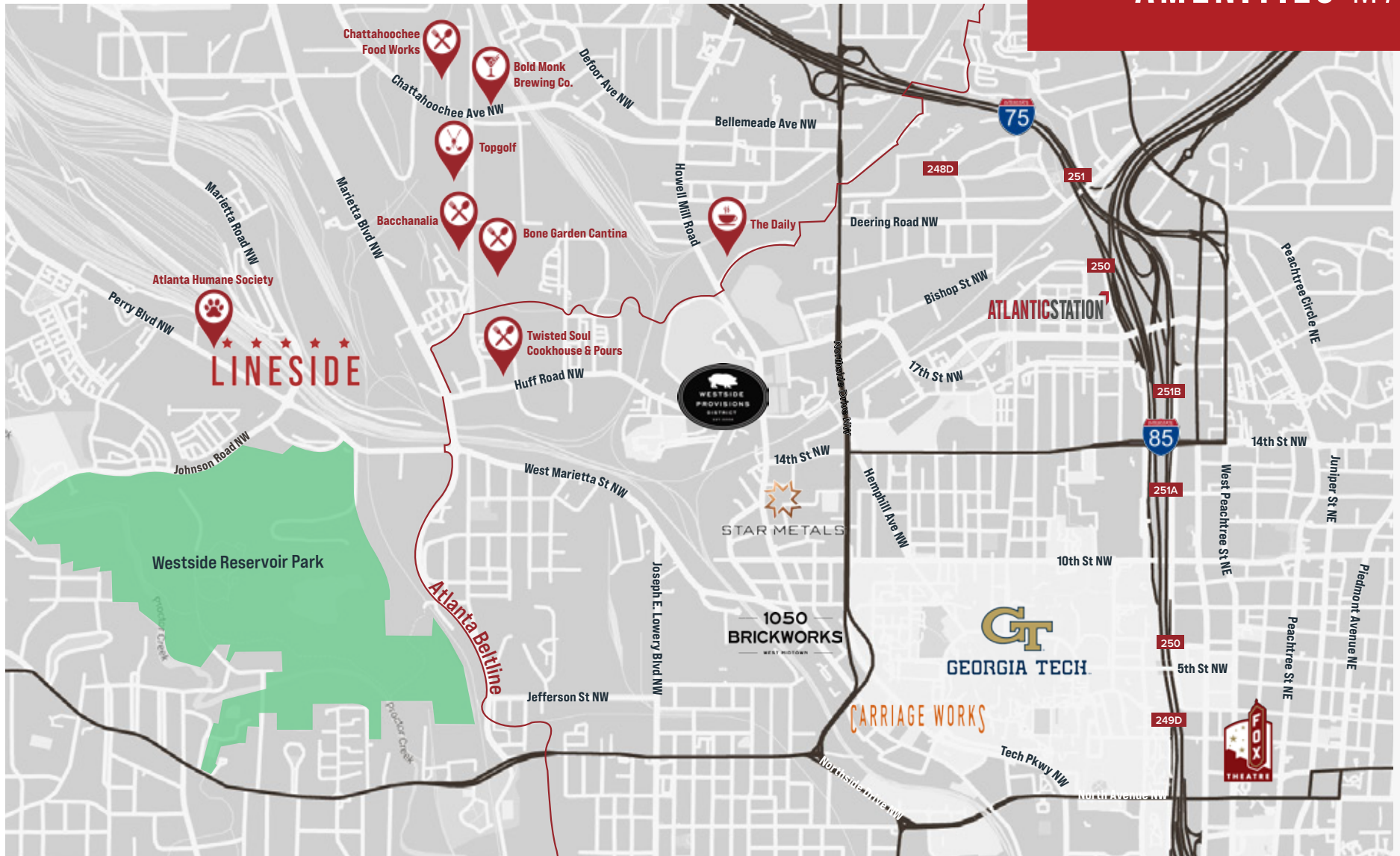
Jeff Pollock, CCIM, SIOR
jp@pollockcommercial.com
O | (404) 662-2182 M | (404) 964-7060

Katie Sentell, CCIM
katie@pollockcommercial.com
O | (404) 596-8419 M | (404) 394-9599

★ ★ ★ ★ ★
LINESIDE
PHOTOS



LINESIDE AMENITIES MAP



☆☆☆☆☆
LINESIDE
AERIAL



★ ★ ★ ★ ★
LINESIDE
 FLOOR/SITE PLAN

SUITE	SQ FT
1	LEASED
2	1,666
3	LEASED
4U	LEASED
5	1,353
6	LEASED
7	LEASED
8	1,434
9	LEASED
10	LEASED
11	1,501
12	1,546
13	1,561
14	1,561
15	LEASED

