

A photograph of a large, single-story commercial building with a light-colored, textured stone or brick facade. The building has a blue metal roof and a blue metal awning over the entrance. A white semi-truck is parked in the parking lot in front of the building. A large, weeping tree is in the foreground. The sky is blue with some clouds.

5009 TAMPA WEST BLVD

UP TO 5,800 SF SHORT - TERM STORAGE

±5,800 RSF

±5,800 RSF AVAILABLE

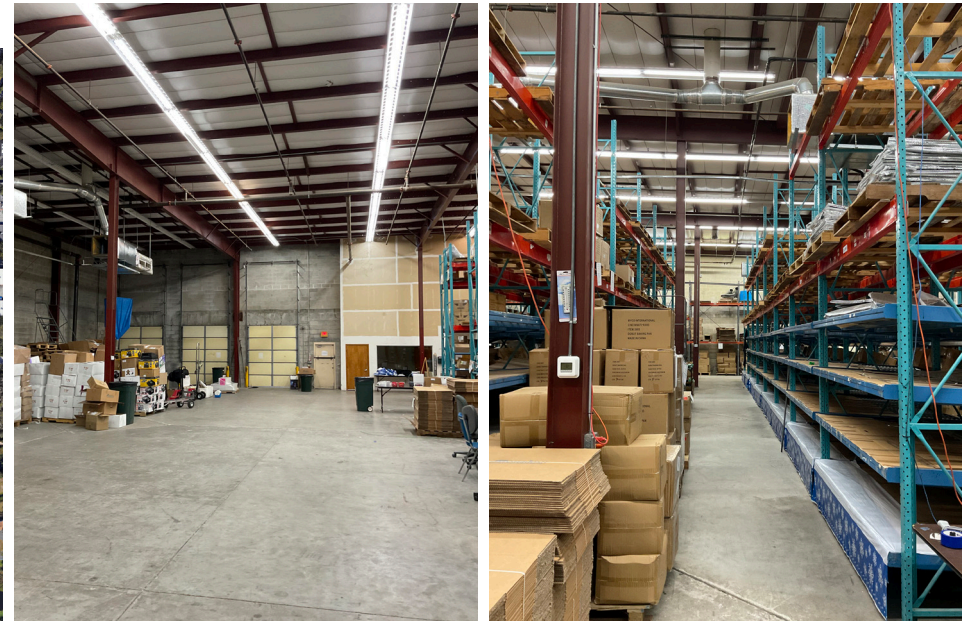
5009 TAMPA WEST BLVD, TAMPA, FL 33634

BUILDING FEATURES

- Fully Air-Conditioned Space
- 1 Dock High Door
- Racking Available
- 20' Clear Height
- Office Available

PROPERTY FEATURES

- Less than 5- minutes drive time to Veterans Expressway
- 10 minutes to I-275
- 15 minutes to Tampa International Airport



FOR MORE INFORMATION, PLEASE CONTACT:

CAITLIN QUINLAN | 540.550.2549
Caitlin.Quinlan@foundrycommercial.com
Licensed Real Estate Broker

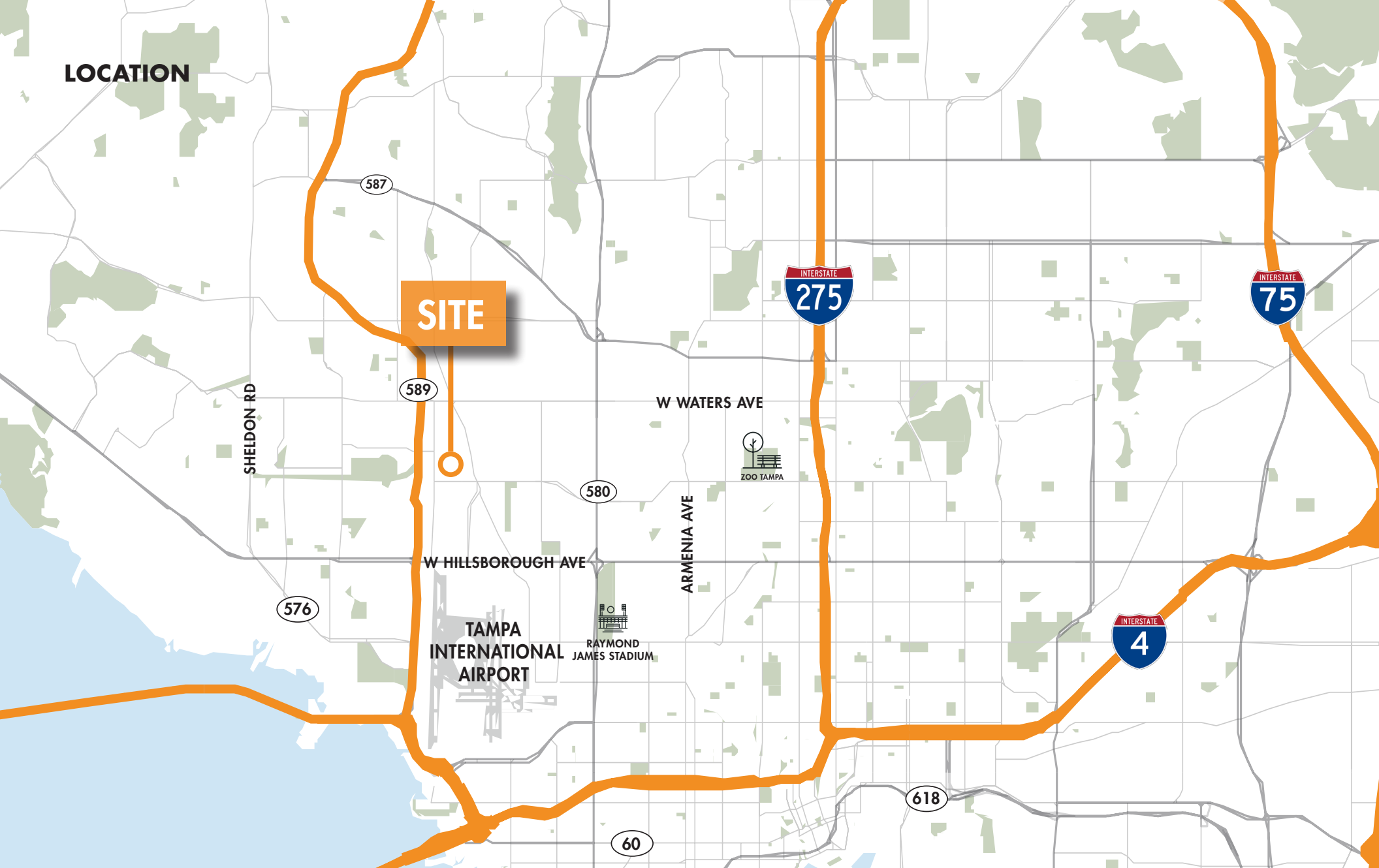
JUSTIN RUBY, SIOR, CCIM | 407.865.0311
Justin.Ruby@foundrycommercial.com
Licensed Real Estate Broker

Although the information contained herein was provided by sources believed to be reliable, Foundry Commercial makes no representation, expressed or implied, as to its accuracy and said information is subject to errors, omissions or changes.

FOUNDRY
COMMERCIAL

foundrycommercial.com

LOCATION



FOR MORE INFORMATION, PLEASE CONTACT:

CAITLIN QUINLAN | 540.550.2549
Caitlin.Quinlan@foundrycommercial.com
Licensed Real Estate Broker

JUSTIN RUBY, SIOR, CCIM | 407.865.0311
Justin.Ruby@foundrycommercial.com
Licensed Real Estate Broker

FOUNDRY
COMMERCIAL

Although the information contained herein was provided by sources believed to be reliable, Foundry Commercial makes no representation, expressed or implied, as to its accuracy and said information is subject to errors, omissions or changes.

foundrycommercial.com