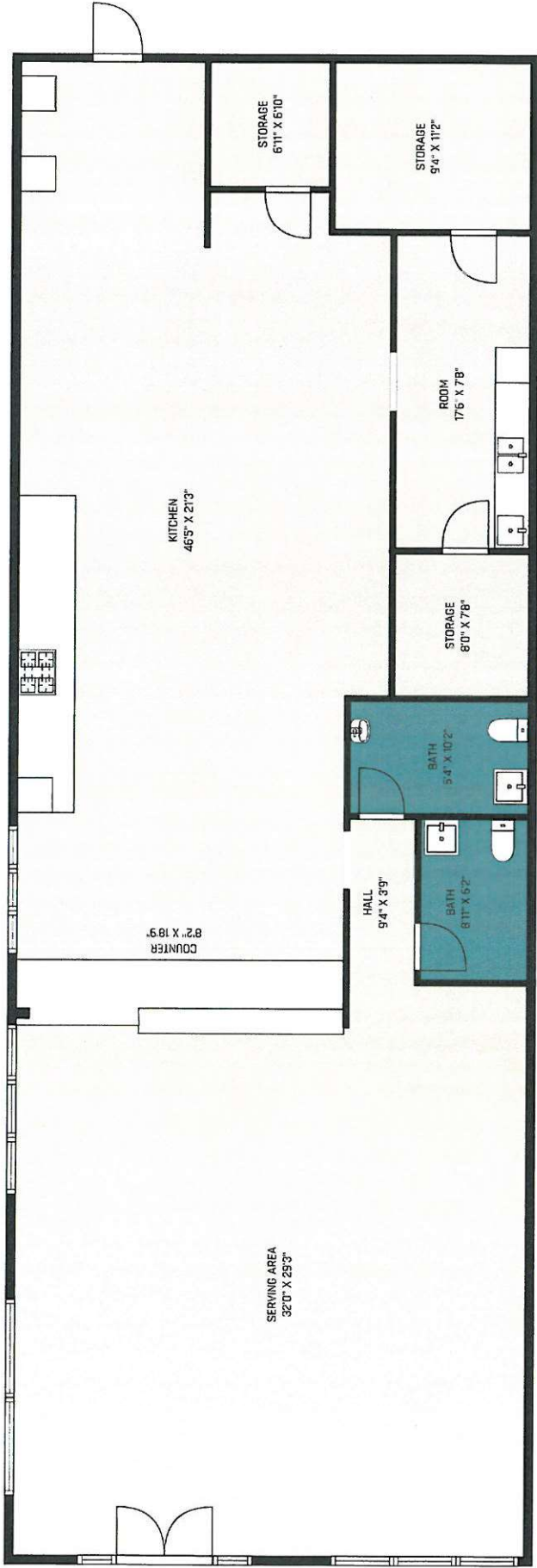


This map and the data within is intended for informational purposes only. This document nor the data within is prepared for or is suitable for any official, legal, engineering and/or surveying purposes. The data provided by this service is a graphical representation which may not represent the features true extent. No warranties; expressed or implied, are provided for the data herein. its use or interpretation.

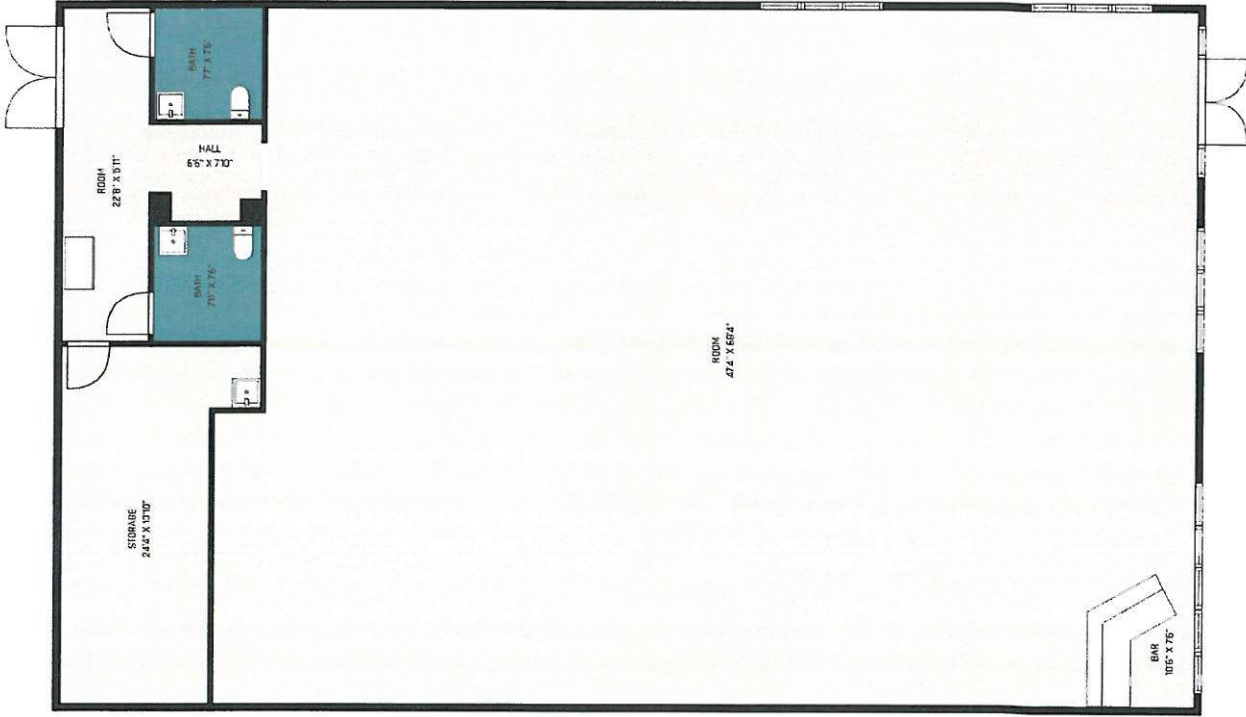
SCPA Appraisal Map
 David Johnson, CFA
 Seminole County Property Appraiser

DAVID JOHNSON, CFA
 SEMINOLE COUNTY PROPERTY APPRAISER

Date: 10/14/2022



ALL IMAGES, DIMENSIONS, AND OTHER INFORMATION CONTAINED HEREIN ARE APPROXIMATE AND FOR ILLUSTRATIVE PURPOSES ONLY. AND SHALL NOT BE RELIED UPON BY ANY PARTY. NEXT DOOR PHOTOS MAKES NO REPRESENTATIONS OR WARRANTIES, AND DISCLAIMS ANY AND ALL LIABILITY ARISING FROM USE OF THIS INFORMATION. ALL INFORMATION HEREIN SHALL BE SUBJECT TO THE TERMS AND CONDITIONS FOUND AT NEXTDOORPHOTOS.COM/TC.



ALL IMAGES, DIMENSIONS, AND OTHER INFORMATION CONTAINED HEREIN ARE APPROXIMATE AND FOR ILLUSTRATIVE PURPOSES ONLY, AND SHALL NOT BE RELIED UPON BY ANY PARTY. NEXT DOOR PHOTOS MAKES NO REPRESENTATIONS OR WARRANTIES, AND DISCLAIMS ALL LIABILITY FOR ANY INACCURACIES OR OMISSIONS IN THIS INFORMATION. ALL INFORMATION HEREIN SHALL BE SUBJECT TO THE TERMS AND CONDITIONS FOUND AT NEXTDOORPHOTOS.COM/TC.