

For Sale

Prime Lot in SoDo - Downtown Orlando

0.39± Acres | \$1,450,000



2506 Taylor Avenue

Orlando, Florida 32806

Property Highlights

- Corner lot (0.39± acres) in the SoDo (South of Downtown) District Opportunity Zone
- Adjacent property with 0.40± acres also for sale for a total of 0.79± acres
- Walking distance to Super Target SoDo Shopping Center
- Prime location for new residential or Accessory Dwelling Units (ADUs) development
- Across the street from McDonalds; next to preschool
- Less than a mile from Orlando Health Regional Medical Hospital, Arnold Palmer Hospital for Children, Winnie Palmer Hospital for Women
- Near multiple restaurants, gyms, and banks; 1 mile from SunRail station
- 5,340± SF industrial/flex concrete block and metal building currently on property



Sale Price: \$1,450,000

For more information

Al Fishalow

O: 407 949 0731
afishalow@realvest.com

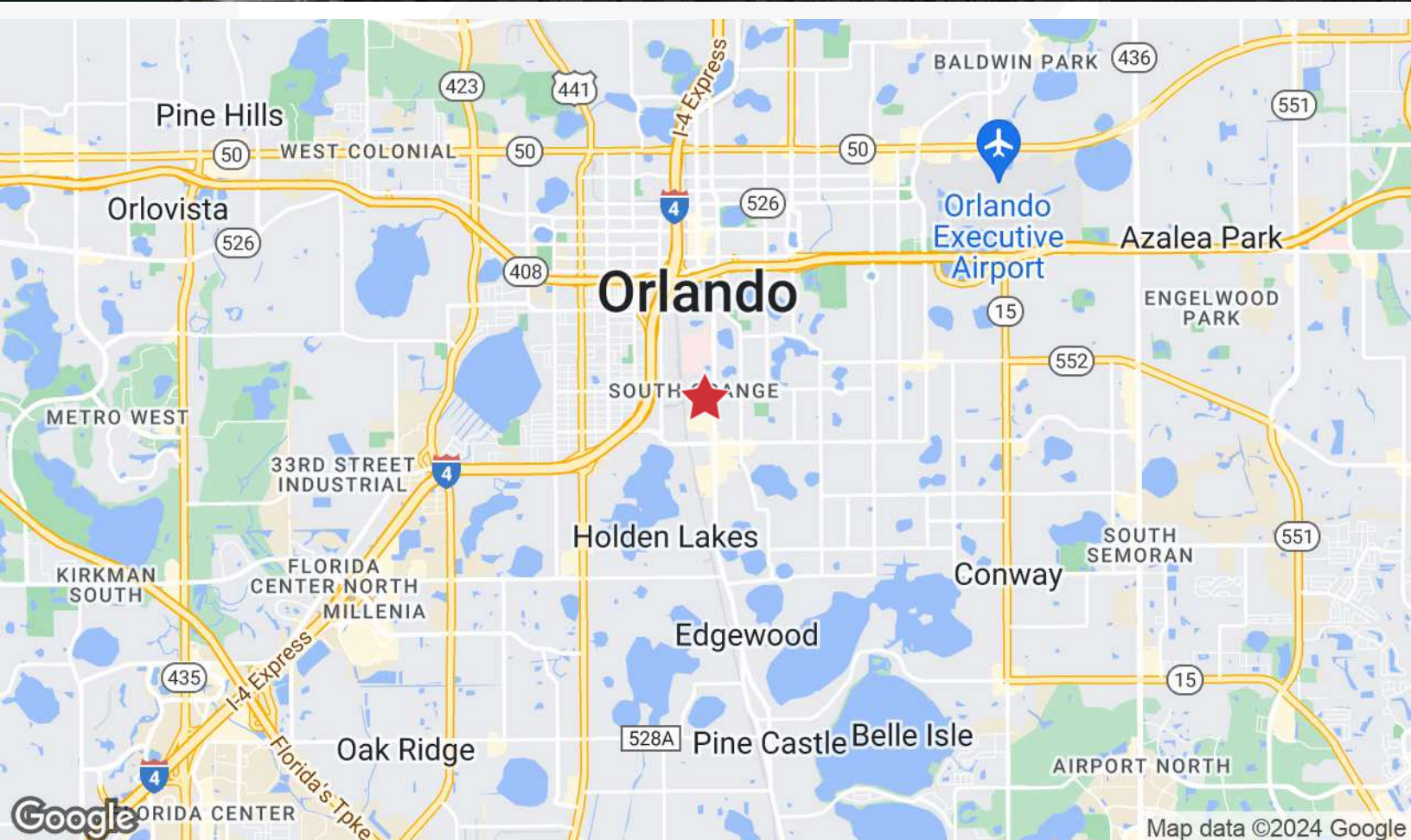
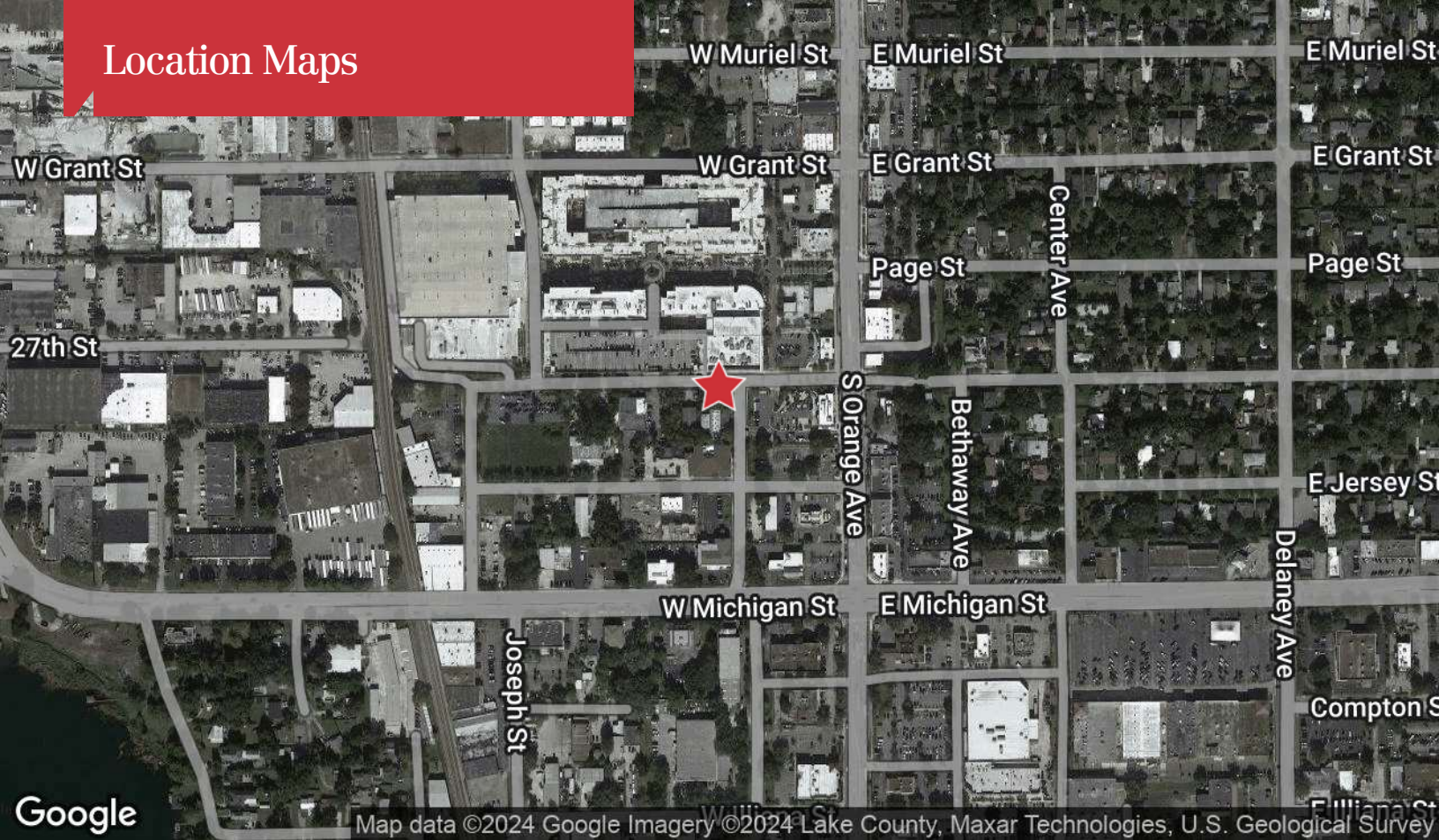
Hillary S. Bressler

O: 407 949 0729
hbressler@realvest.com

Property Photos



Location Maps



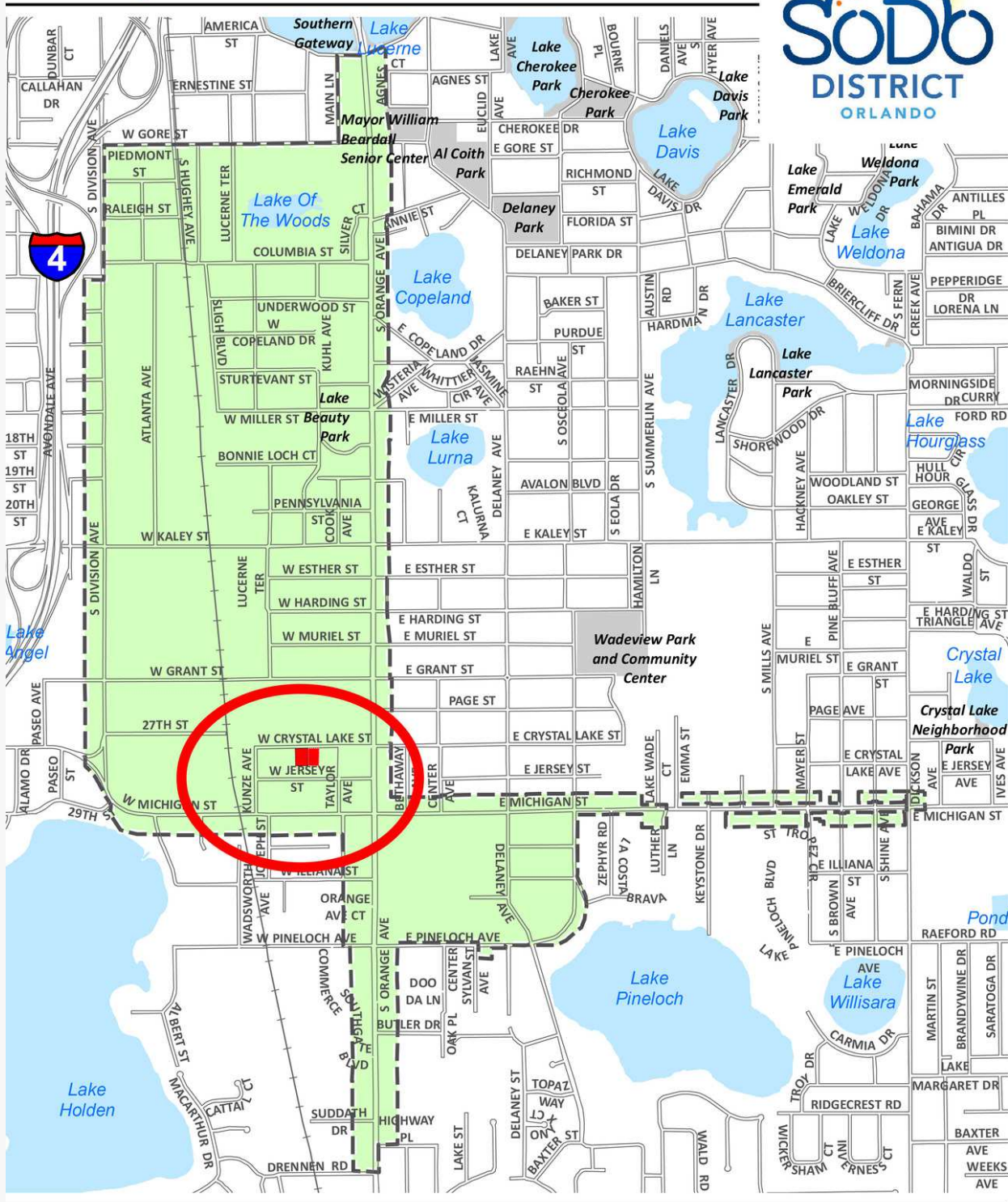
The information contained herein has been given to us by the owner of the property or other sources we deem reliable. We have no reason to doubt its accuracy, but we do not guarantee it. All information should be verified prior to purchase or lease. Unless otherwise noted, the property is being offered as-is, where is, with all faults.

1800 Pembroke Drive, Suite 350



A local thing

SoDo District Main Street Program

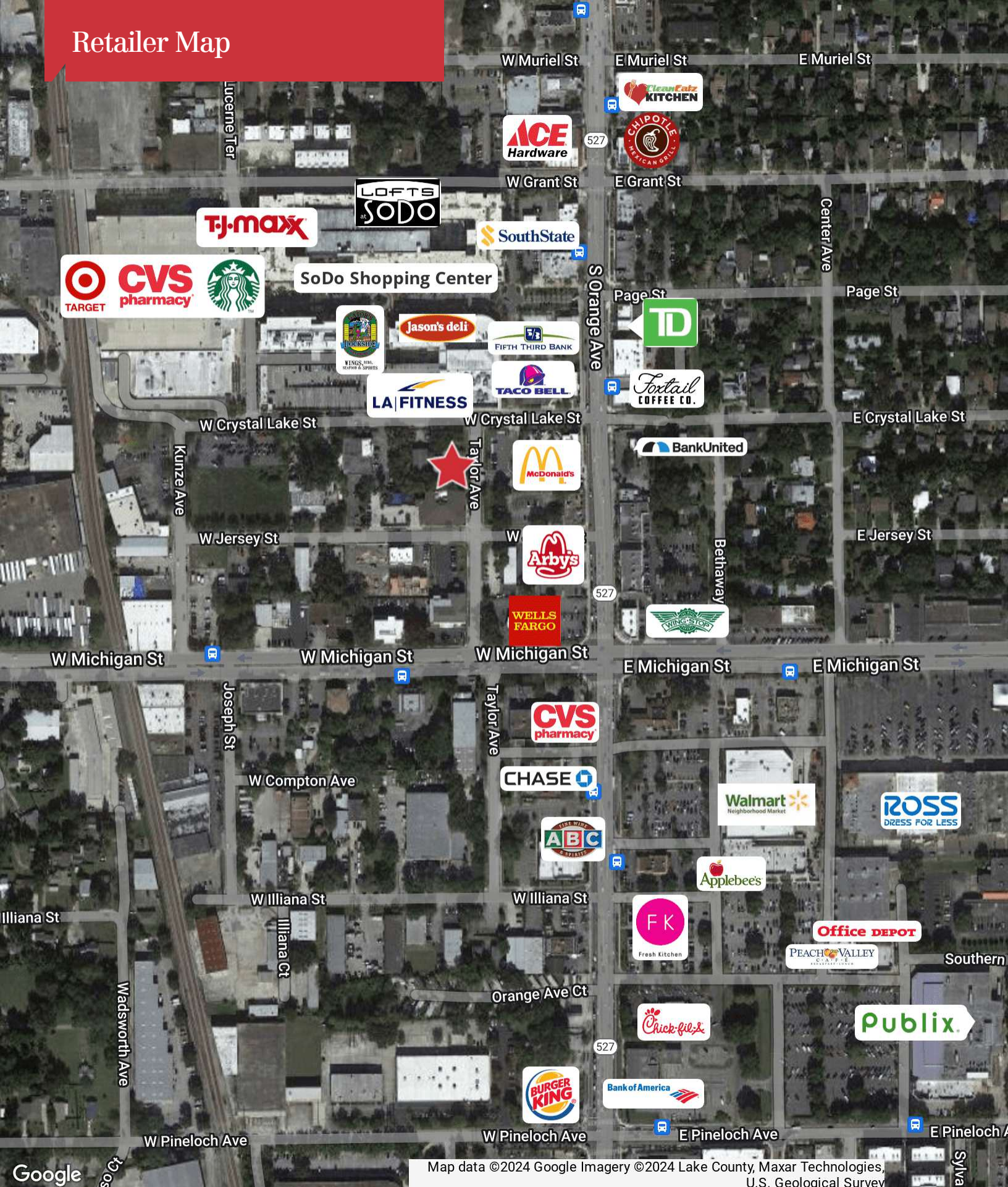


 **Target Area**

City of Orlando, Economic Development Department, January 2017



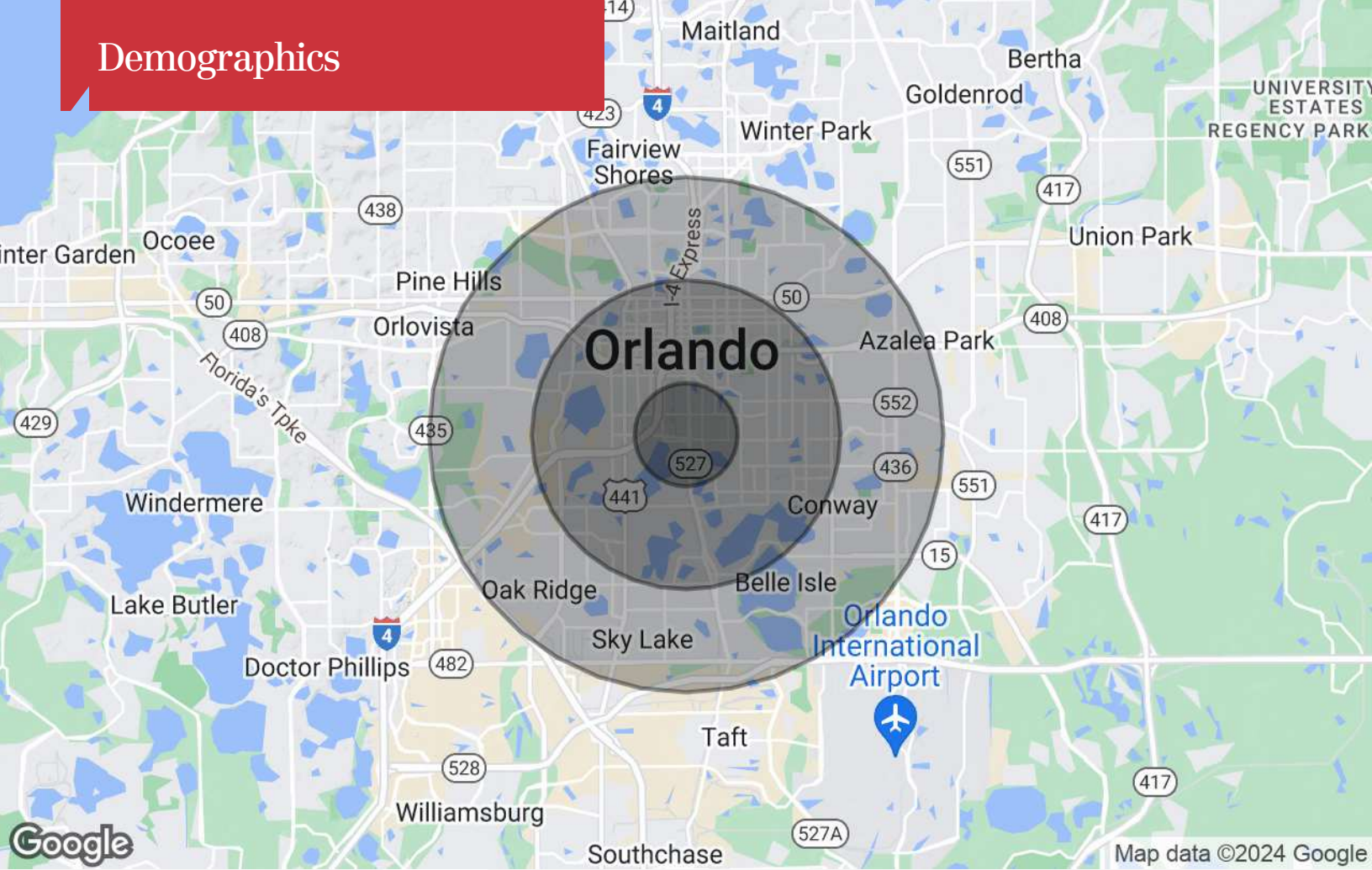
Retailer Map



Google

Map data ©2024 Google Imagery ©2024 Lake County, Maxar Technologies, U.S. Geological Survey

Demographics



Population

	1 Mile	3 Miles	5 Miles
TOTAL POPULATION	8,889	111,408	301,971
MEDIAN AGE	39.6	37.7	36.6
MEDIAN AGE (MALE)	39.7	36.7	35.8
MEDIAN AGE (FEMALE)	40.8	38.4	37.5

Households & Income

	1 Mile	3 Miles	5 Miles
TOTAL HOUSEHOLDS	3,941	56,844	139,039
# OF PERSONS PER HH	2.3	2.0	2.2
AVERAGE HH INCOME	\$86,375	\$65,723	\$64,328
AVERAGE HOUSE VALUE	\$283,744	\$215,137	\$198,545

* Demographic data derived from 2020 ACS - US Census