

For Sale

2 Lots in SoDo - Downtown Orlando

0.40 Acres | \$1,200,000



26 & 36 West Crystal Lake Street

Orlando, Florida 32806

Property Highlights

- Two adjacent lots in the SoDo (South of Downtown) District Opportunity Zone totaling 0.40± acres
- Adjacent property with 0.39± acres also for sale for a total of 0.79± acres
- Walking distance to Super Target SoDo Shopping Center
- Prime location for new residential or Accessory Dwelling Units (ADUs) development
- Less than a mile from Orlando Health Regional Medical Hospital, Arnold Palmer Hospital for Children, Winnie Palmer Hospital for Women
- Near multiple restaurants, gyms, and banks; 1 mile from SunRail station
- 2,400± SF concrete block auto repair shop with 2 bay doors and extra parking currently on property



Sale Price: \$1,200,000

For more information

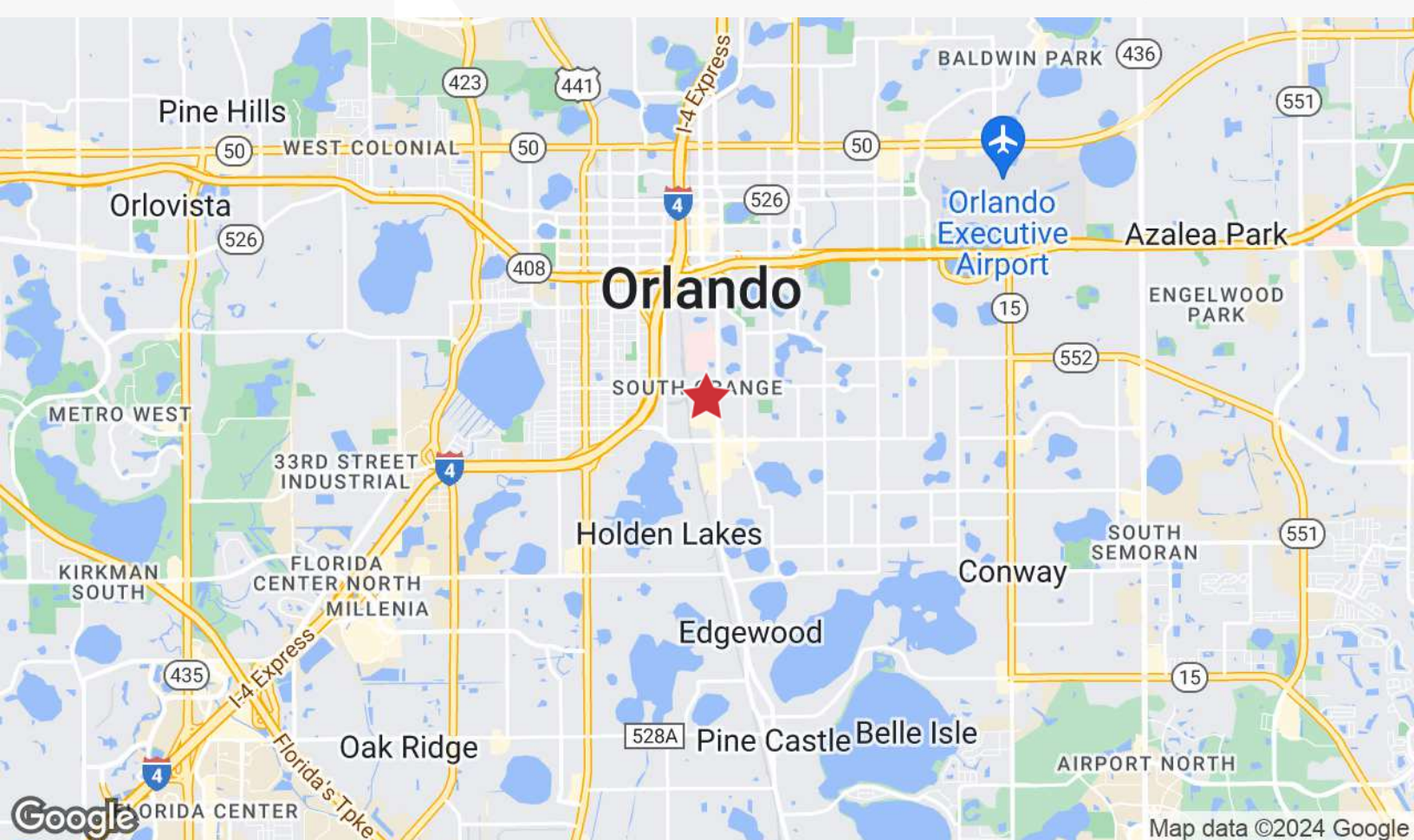
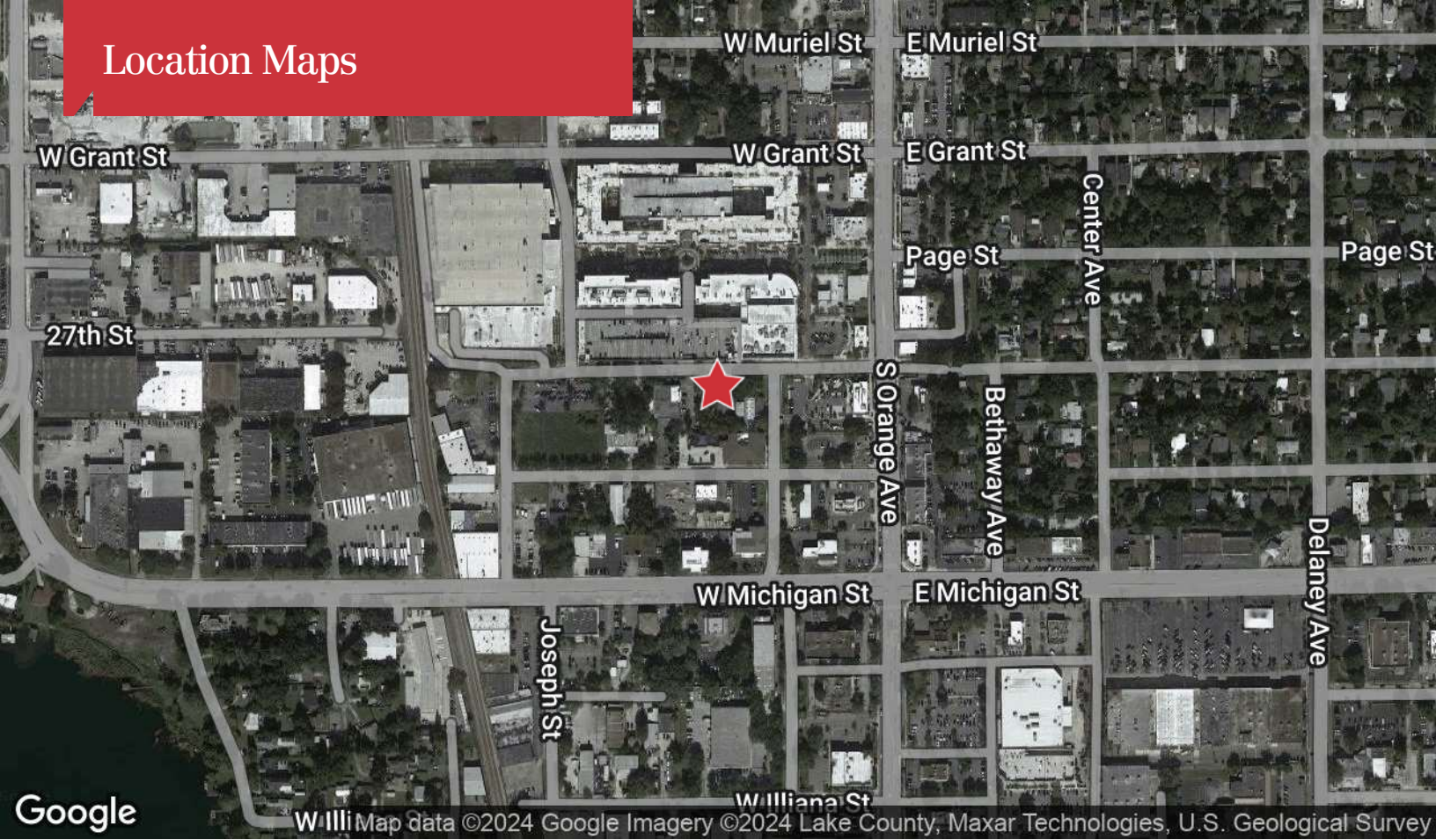
Al Fishalow

O: 407 949 0731
afishalow@realvest.com

Hillary S. Bressler

O: 407 949 0729
hbressler@realvest.com

Location Maps



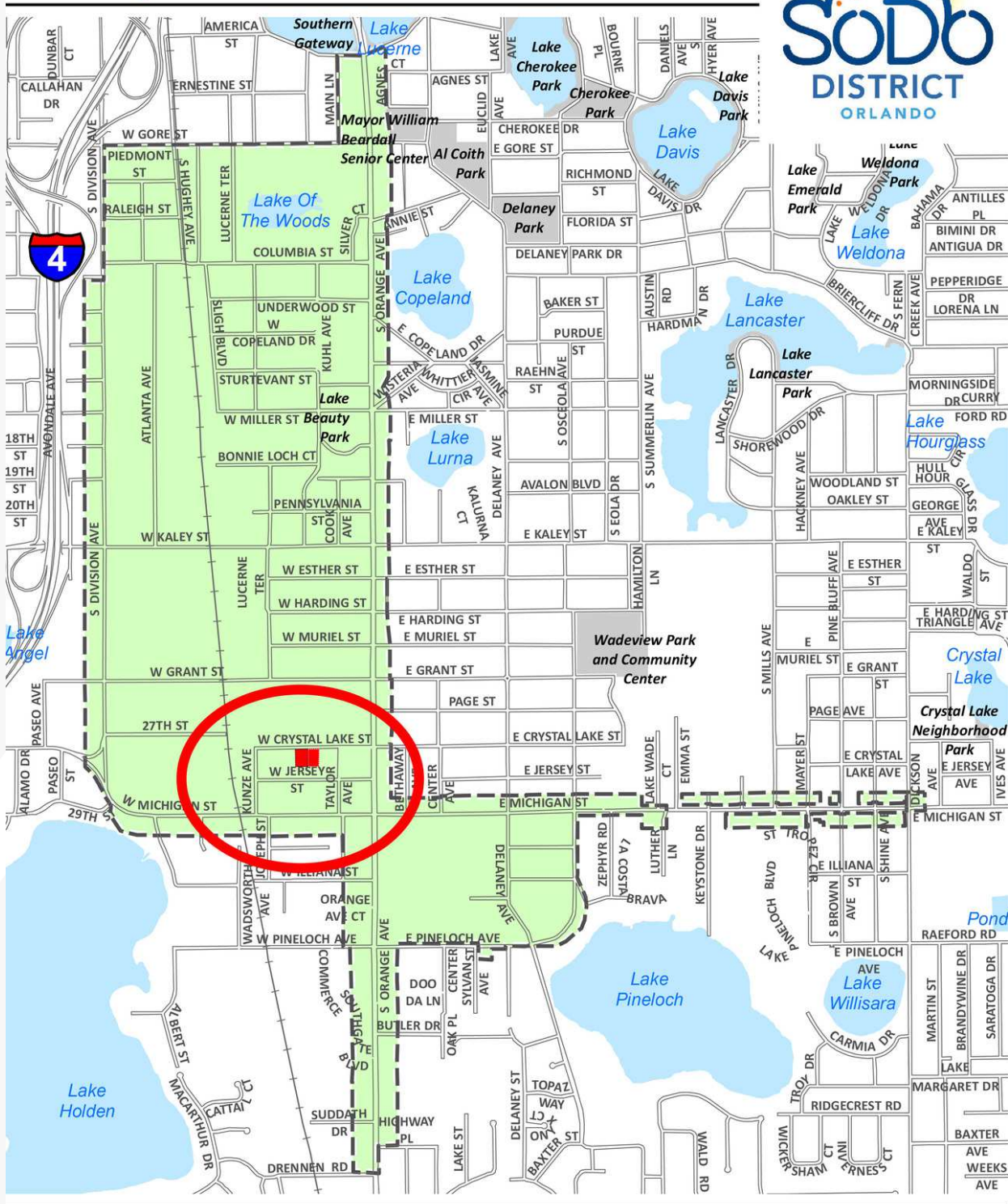
The information contained herein has been given to us by the owner of the property or other sources we deem reliable. We have no reason to doubt its accuracy, but we do not guarantee it. All information should be verified prior to purchase or lease. Unless otherwise noted, the property is being offered as-is, where is, with all faults.

1800 Pembroke Drive, Suite 350



A local thing

SoDo District Main Street Program

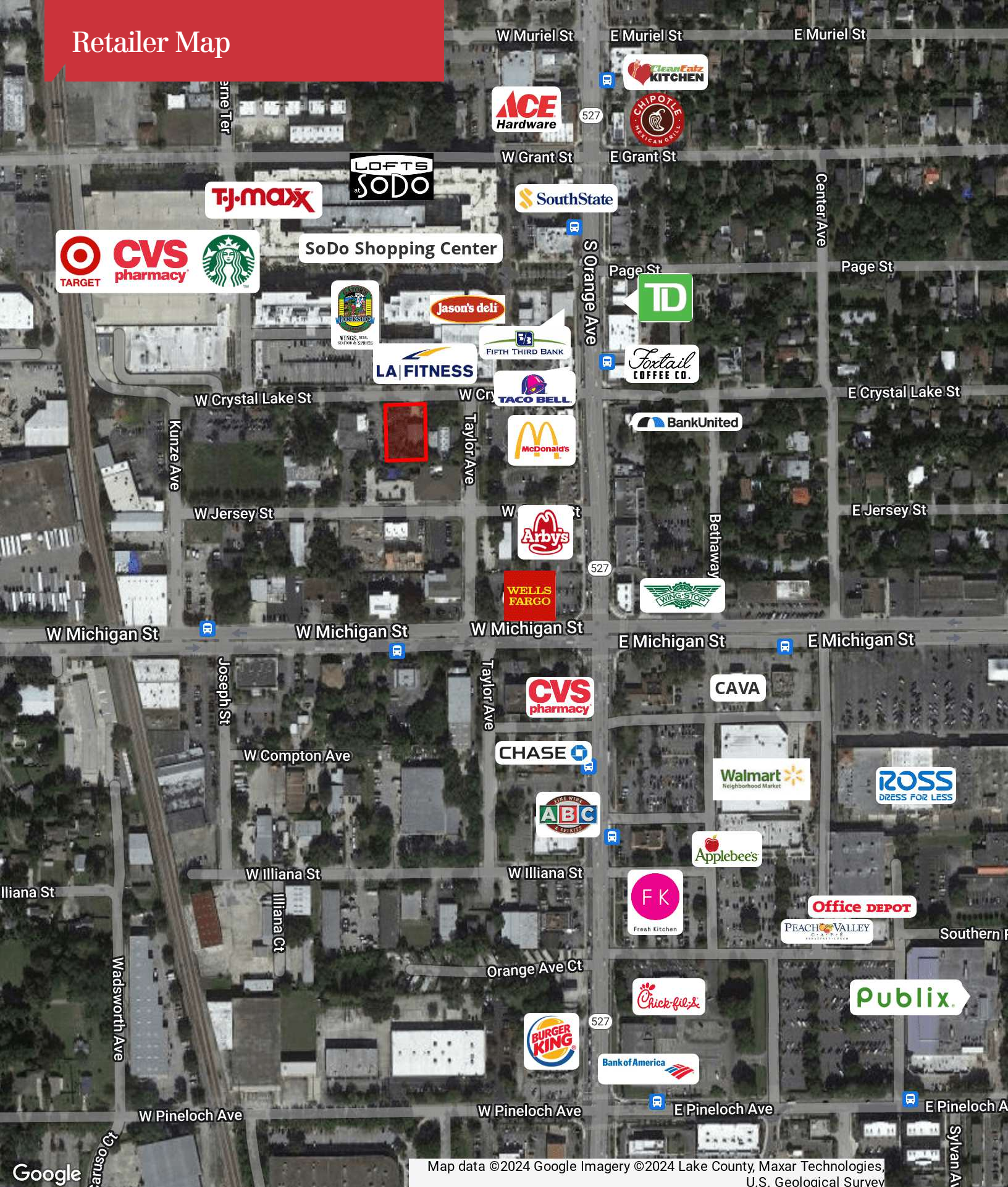


 **Target Area**

City of Orlando, Economic Development Department, January 2017

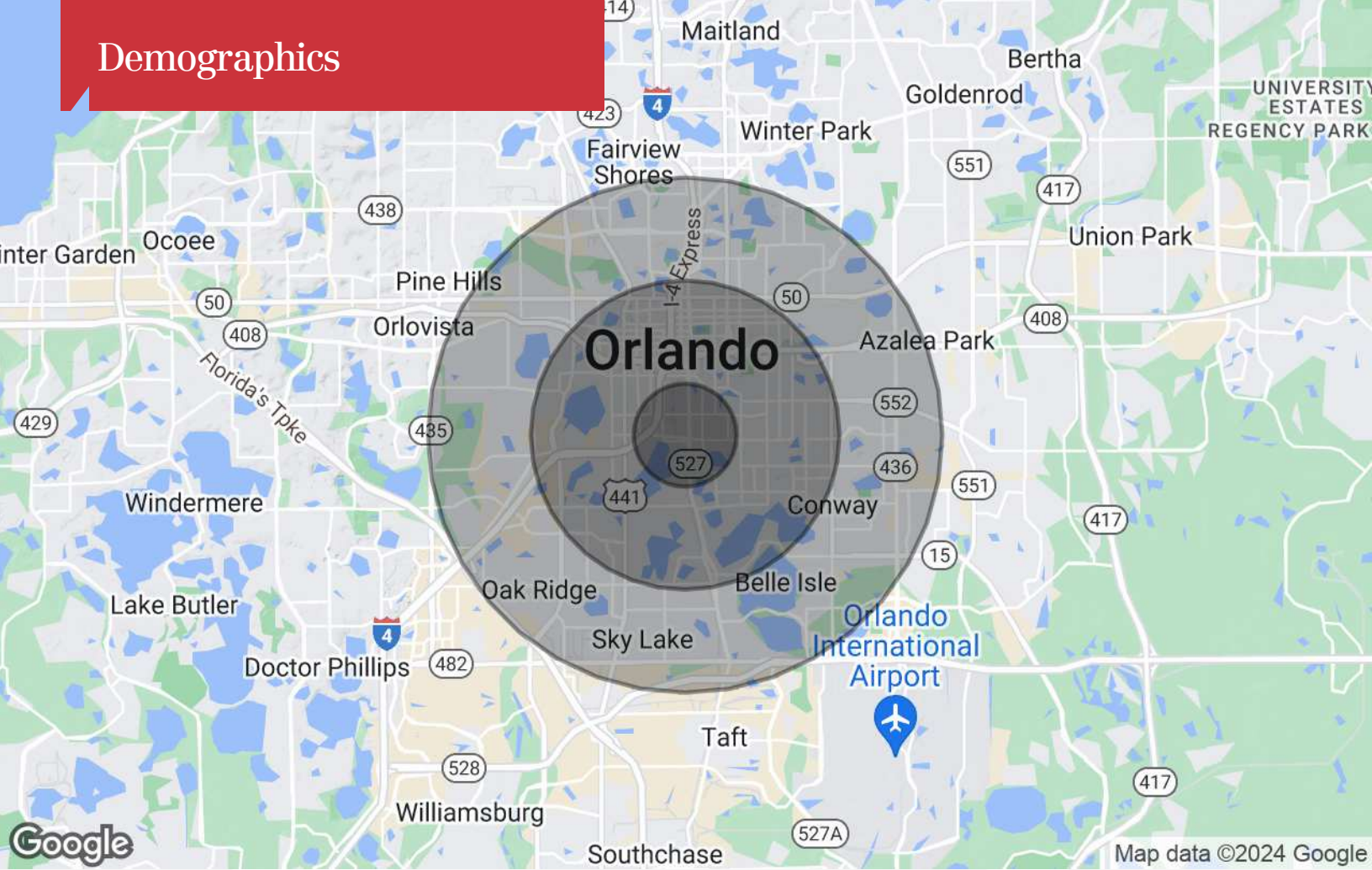


Retailer Map



Map data ©2024 Google Imagery ©2024 Lake County, Maxar Technologies, U.S. Geological Survey

Demographics



Population

	1 Mile	3 Miles	5 Miles
TOTAL POPULATION	8,817	111,415	301,874
MEDIAN AGE	39.8	37.7	36.6
MEDIAN AGE (MALE)	39.8	36.8	35.8
MEDIAN AGE (FEMALE)	40.9	38.4	37.5

Households & Income

	1 Mile	3 Miles	5 Miles
TOTAL HOUSEHOLDS	3,907	56,843	139,037
# OF PERSONS PER HH	2.3	2.0	2.2
AVERAGE HH INCOME	\$85,534	\$65,599	\$64,302
AVERAGE HOUSE VALUE	\$281,765	\$214,774	\$198,372

* Demographic data derived from 2020 ACS - US Census