

# VenturePark Beachline

7650 AMSTERDAM DRIVE, ORLANDO, FLORIDA | WWW.VENTUREPARKBEACHLINE.COM

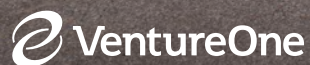


CLICK HERE TO VIEW  
PROPERTY WEBSITE



CLICK HERE TO VIEW  
MARKETING VIDEO

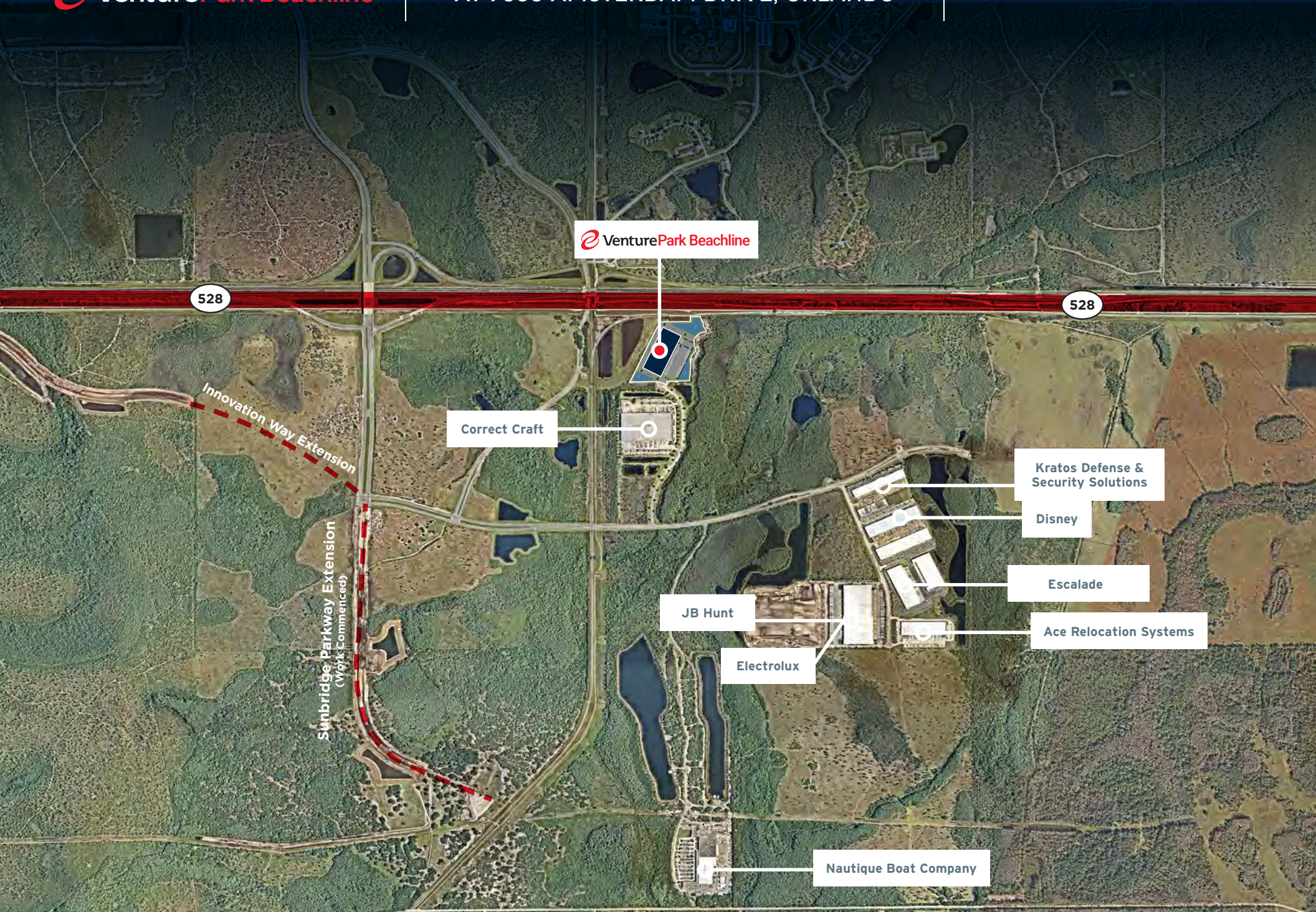
220,853 SF ORLANDO INDUSTRIAL LOGISTICS CENTER FOR LEASE | AVAILABLE FOR IMMEDIATE OCCUPANCY





# HIGHLIGHTS

<b>ADDRESS</b>	7650 Amsterdam Dr. Orlando, FL 32832
<b>SQUARE FOOTAGE</b>	220,853 SF
<b>OFFICE SF</b>	2,487 SF (100% Complete)
<b>SITE SIZE</b>	16.7 Acres
<b>CLEAR HEIGHT</b>	36'
<b>DOCKS</b>	35 (9' x 10') – 23 of which incl levelers
<b>DRIVE-INS</b>	2 (12' x 14')
<b>PARKING RATIO</b>	1.1/1,000 SF
<b>TRAILER STALLS</b>	53 Stalls
<b>COLUMN SPACING</b>	56' x 50' Typical 60' Speed Bay
<b>BUILDING DIMENSIONS</b>	308' x 709'
<b>TRUCK COURT</b>	230'
<b>FIRE SUPPRESSION</b>	ESFR
<b>POWER</b>	2,000 Amps (3-Phase) - Expandable
<b>LIGHTING</b>	LED to 30 fc
<b>AVAILABILITY</b>	Immediate Occupancy



 VenturePark Beachline

528

528

Innovation Way Extension

Sunbridge Parkway Extension  
(W/1st Commenced)

Correct Craft

Kratos Defense & Security Solutions

Disney

Escalade

Ace Relocation Systems

JB Hunt

Electrolux

Nautique Boat Company



 VenturePark Beachline

528

528

Meridian Parks  
(Mattamy)

**STARWOOD**

2,560 Acre Mixed-Use Development  
4,000 Single-Family + 2,000 Multifamily Home  
500,000 SF Office/Retail

Storey Park  
(Lenar)

**LAKE NONA**

417

The Oaks at Moss Park  
(Lenar)

Sunbridge Parkway Extension  
(Work Commenced)

Correct Craft

Electrolux

Kratos Defense & Security Solutions

Disney

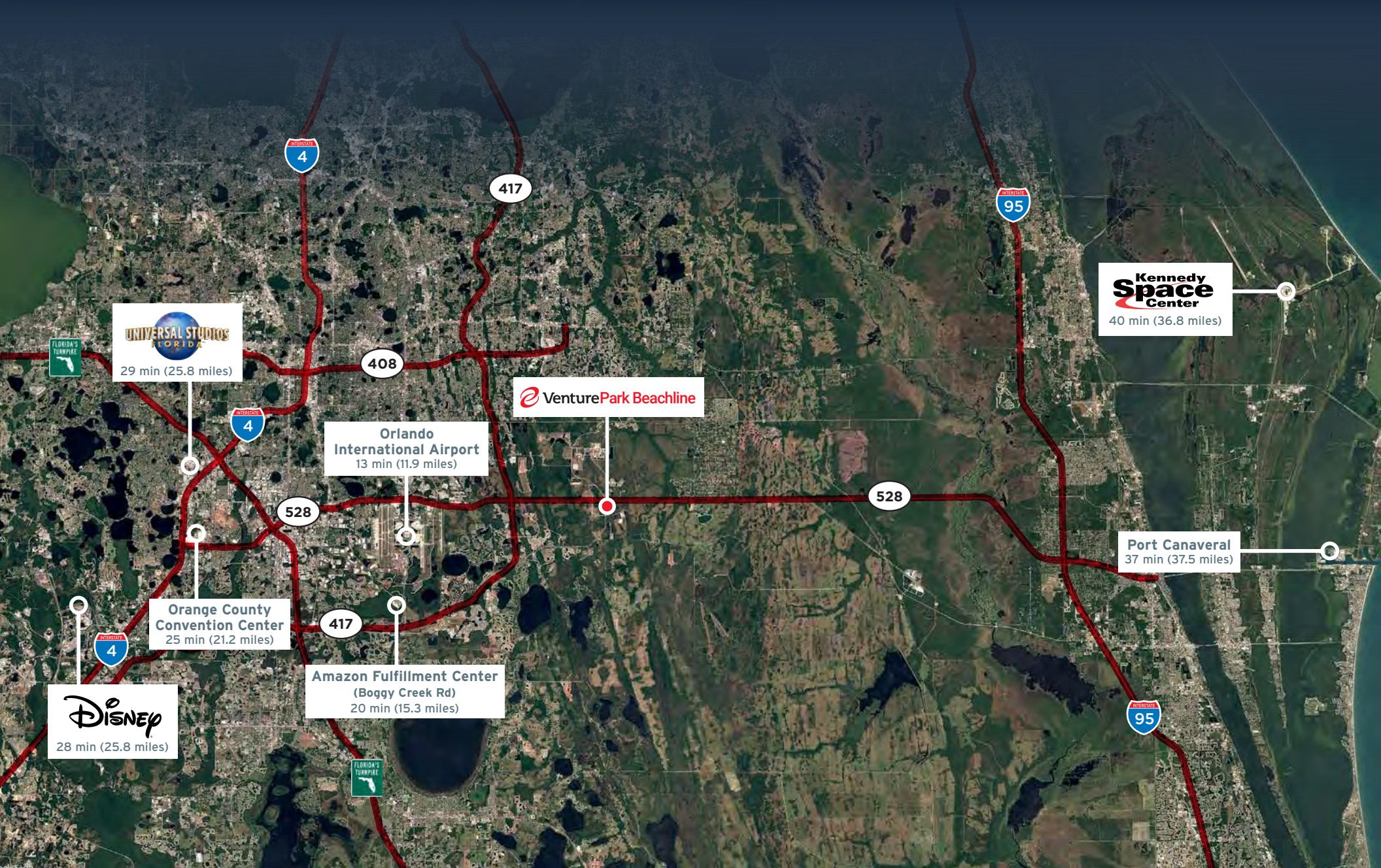
Escalade

Ace Relocation Systems

JB Hunt

Nautique Boat Company

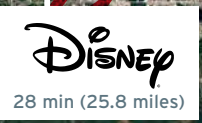
**SUNBRIDGE**



  
29 min (25.8 miles)

**Orlando International Airport**  
13 min (11.9 miles)

**Orange County Convention Center**  
25 min (21.2 miles)

  
28 min (25.8 miles)

**Amazon Fulfillment Center (Boggy Creek Rd)**  
20 min (15.3 miles)



**Kennedy Space Center**  
40 min (36.8 miles)

**Port Canaveral**  
37 min (37.5 miles)

## FOR LEASING INFORMATION, PLEASE CONTACT:

Jared Bonshire  
Executive Managing Director  
(t) +1 407 541 4414  
[jared.bonshire@cushwake.com](mailto:jared.bonshire@cushwake.com)

David Perez  
Executive Managing Director  
(t) +1 407 541 4435  
[david.perez@cushwake.com](mailto:david.perez@cushwake.com)

Taylor Zambito  
Senior Director  
(t) +1 407 541 4409  
[taylor.zambito@cushwake.com](mailto:taylor.zambito@cushwake.com)

Ryan Hubbard  
Director  
(t) +1 407 541 4390  
[ryan.hubbard@cushwake.com](mailto:ryan.hubbard@cushwake.com)

©2024 Cushman & Wakefield. All rights reserved. The information contained in this communication is strictly confidential. This information has been obtained from sources believed to be reliable but has not been verified. NO WARRANTY OR REPRESENTATION, EXPRESS OR IMPLIED, IS MADE AS TO THE CONDITION OF THE PROPERTY (OR PROPERTIES) REFERENCED HEREIN OR AS TO THE ACCURACY OR COMPLETENESS OF THE INFORMATION CONTAINED HEREIN, AND SAME IS SUBMITTED SUBJECT TO ERRORS, OMISSIONS, CHANGE OF PRICE, RENTAL OR OTHER CONDITIONS, WITHDRAWAL WITHOUT NOTICE, AND TO ANY SPECIAL LISTING CONDITIONS IMPOSED BY THE PROPERTY OWNER(S). ANY PROJECTIONS, OPINIONS OR ESTIMATES ARE SUBJECT TO UNCERTAINTY AND DO NOT SIGNIFY CURRENT OR FUTURE PROPERTY PERFORMANCE.

