

For Lease

The Mezz at the Sanctuary

Executive Offices | Fully Furnished

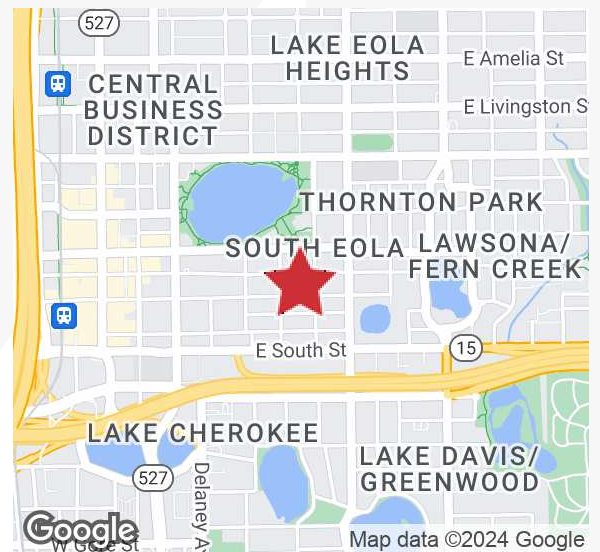


100 South Eola Drive

Orlando, Florida 32801

Property Highlights

- Downtown mini-suites - private offices and office cubicles
- Access to shared meeting room, break room, copy room and waiting area
- Can be combined or leased separately
- Walking distance to Publix and Lake Eola
- Class A furniture, wifi/data and electricity included
- Public parking garages close by - minutes away on Lymmo Lime Route
- Some dedicated and assigned parking spaces available



Offices Available from 108± SF

Call for Rates & Up-to-Date Availability

For more information

Jeffrey Bloom, CCIM

O: 407 949 0709

jbloom@realvest.com



04.05.24

The information contained herein has been given to us by the owner of the property or other sources we deem reliable. We have no reason to doubt its accuracy, but we do not guarantee it. All information should be verified prior to purchase or lease. Unless otherwise noted, the property is being offered as-is, where is, with all faults.

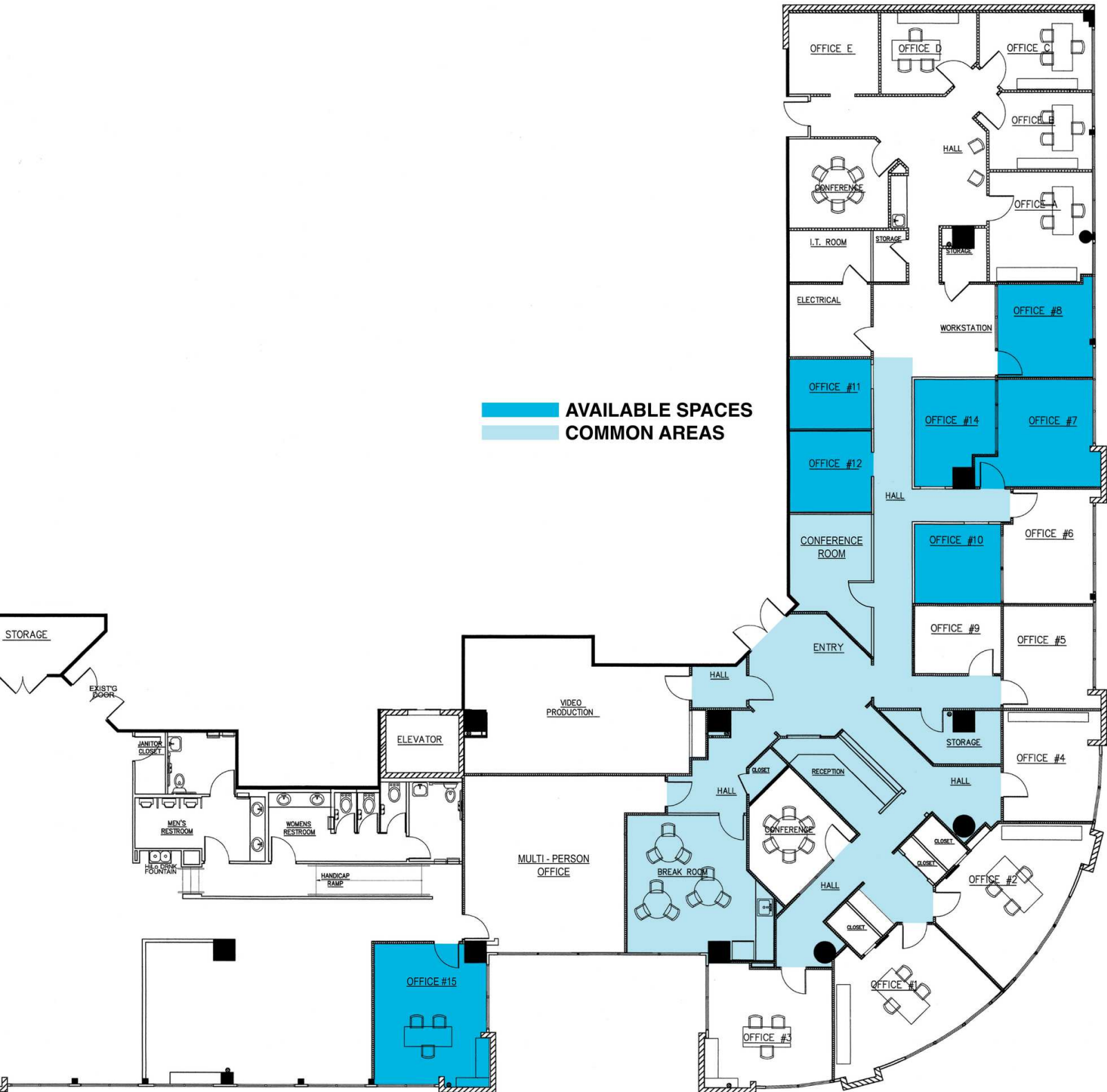
1800 Pembroke Drive, Suite 350

Orlando, FL 32810

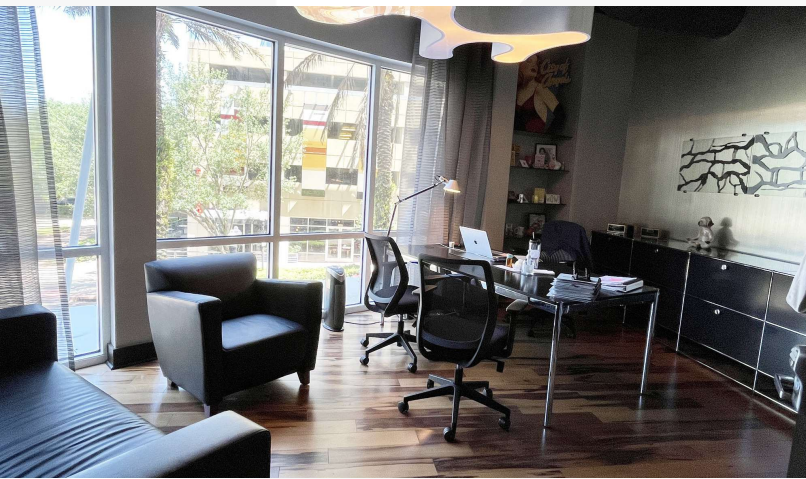
407 875 9989 tel

nairealvest.com

Floorplan - Suite 200



Additional Photos



Additional Photos

