

Industrial/Warehouse For Lease

2190 Reserve Park Trace, Port St. Lucie, FL 34986

NAISouthcoast



Presented by

Nikolaus M. Schroth, CCIM
Broker Associate | Principal

+1 772 286 6292
nikschroth@naisouthcoast.com

J. Jeffery Allman, Jr.
Sales Associate

+1 772 283 1555
jeff@naisouthcoast.com

James McKinney
Sales Associate

+1 772 349 3414
jamesmckinney@naisouthcoast.com

FOR LEASE:

\$17.00/SF Gross

Industrial/Warehouse For Lease

2190 Reserve Park Trace, Port St. Lucie, FL 34986

Property Details

Address: 2190 Reserve Park Trace, Port St. Lucie, FL 34986

Unit Sizes: Unit 10: 1,632 SF

Pricing: \$17.00/SF Gross

Zoning: Industrial/Office

Property Overview

This industrial warehouse, located in Port St. Lucie, Florida, was built in 2004 and has a total of 11,171 square feet of space. The units within the building measure 1,632 square feet each, providing ample room for storage and other industrial uses. With its convenient location and ample space, this warehouse is a great choice for businesses and organizations in need of industrial facilities in the Port St. Lucie area.

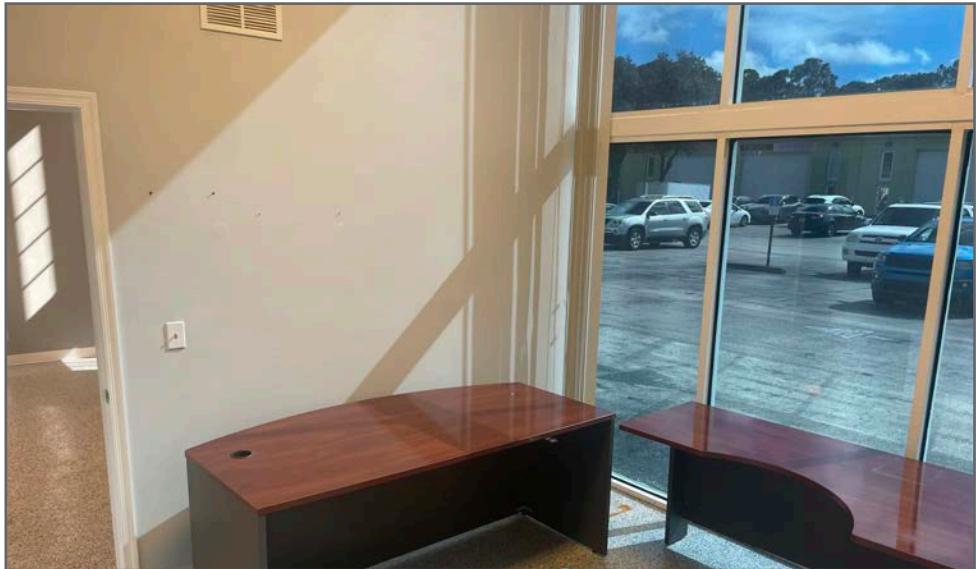
Located just north of the booming town of Tradition and boarding the neighborhood of PGA National gives the property a great location and access to I-95 and the Florida Turnpike.



Industrial/Warehouse For Lease

2190 Reserve Park Trace, Port St. Lucie, FL 34986

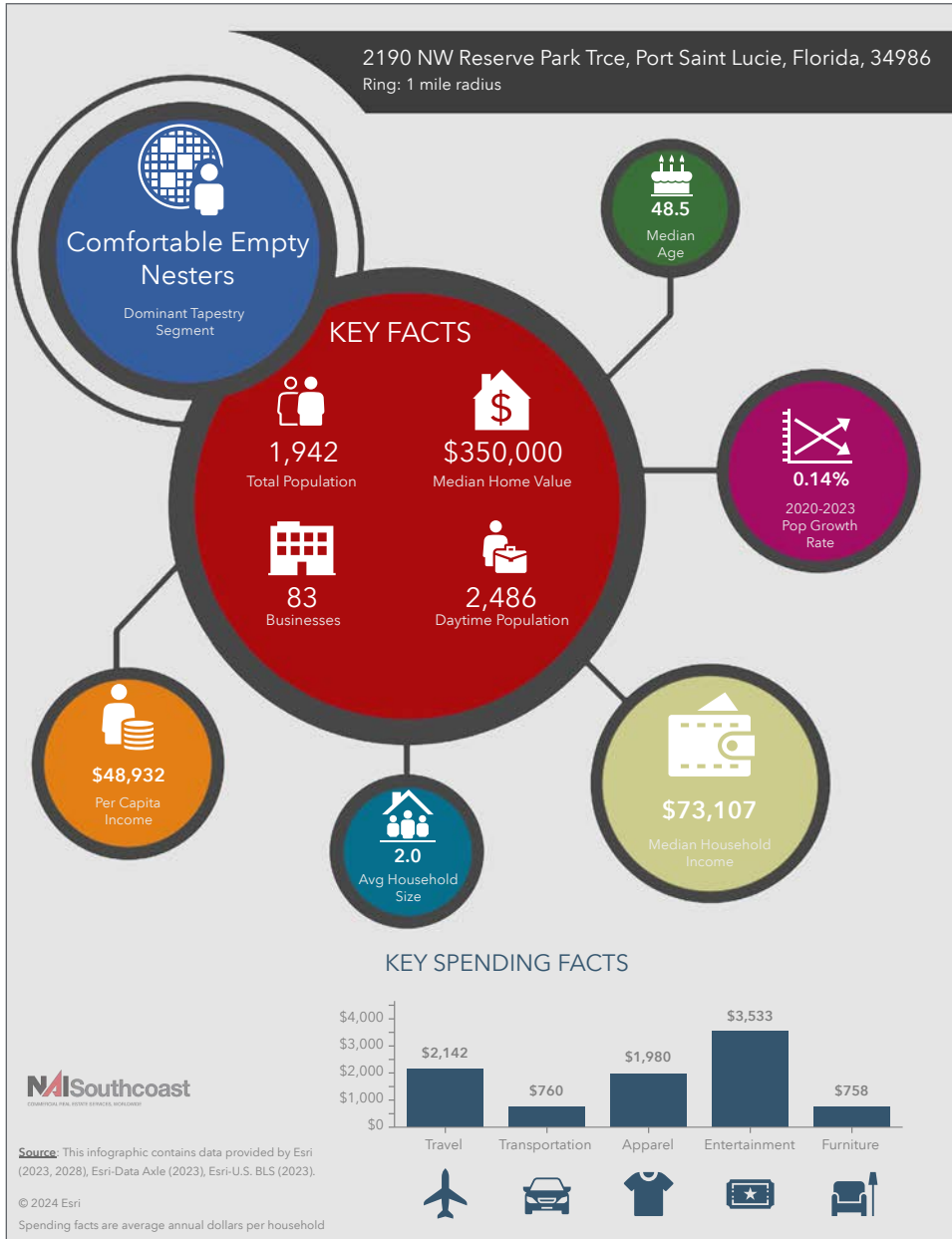
Unit 10



Industrial/Warehouse For Lease

2190 Reserve Park Trace, Port St. Lucie, FL 34986

2023 Demographics



Population

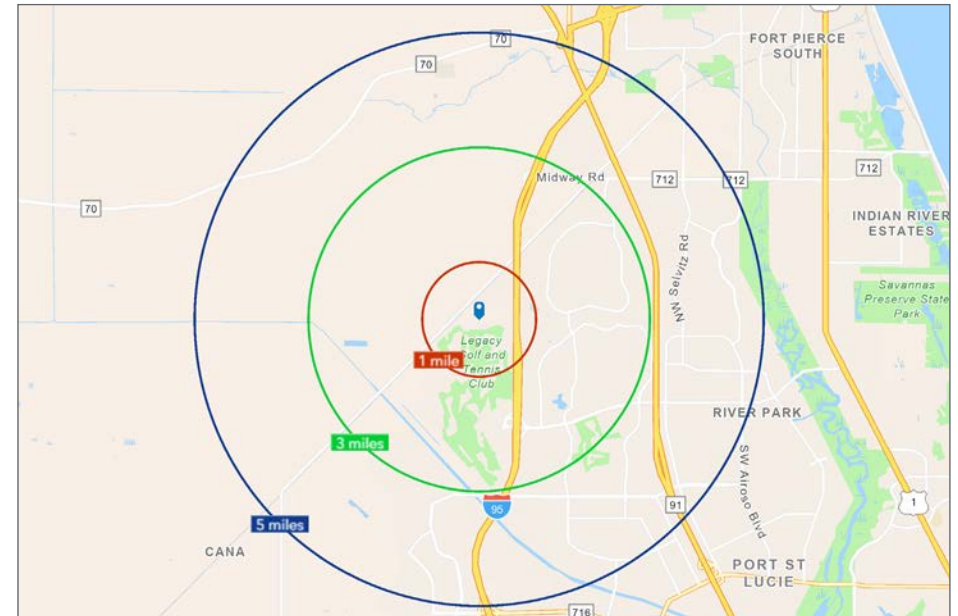
- 1 Mile: 1,942
- 3 Mile: 28,656
- 5 Mile: 89,588

Average Household Income

- 1 Mile: \$99,811
- 3 Mile: \$98,700
- 5 Mile: \$93,145

Median Age

- 1 Mile: 48.5
- 3 Mile: 49.4
- 5 Mile: 43.9



What's it like to live in Port St. Lucie, FL?

Port St. Lucie is nestled along Florida's Treasure Coast, along the state's southeast side, about halfway between Miami and Orlando. Port St. Lucie has a more relaxed atmosphere than its larger neighbors. Its clean streets and quiet neighborhoods are woven around scenic waterways and lush green golf courses. Homes in the area are affordable to buy or rent, compared with other South Florida housing markets. However, this may change as Port St. Lucie's popularity rises.

The St. Lucie River, a valuable resource to the community, is used by residents for boating and fishing.

Port St. Lucie's natural side is strengthened by its world-class amenities. The New York Mets play spring training games at Clover Park, and Port St. Lucie is home to the PGA Center for Golf Learning and Performance, as well as an all-inclusive resort on the St. Lucie River.

What is there to do in Port St. Lucie, FL?

The St. Lucie River and nearby Atlantic Coast beaches make exploring the outdoors one of the region's most popular pastimes. Boaters will find several boat ramps within the metro area. The docks at Sewall's Point on the St. Lucie River is a year-round fishing hot spot. Hiking trails can be found at the Oxbow Eco-Center and Savannas Preserve State Park. The Port St. Lucie Botanical Gardens, tucked beside the St. Lucie River, is another excellent outdoor attraction with regularly scheduled programs for families, as well as jazz nights for adults.

The MidFlorida Credit Union Event Center is a hub for activity: Retirees who come for a game of racquet ball cross paths with the preschool crowd enjoying a playgroup. Port St. Lucie also hosts a number of annual festivals, most of which take place between November and February when the weather is cool. Oktoberfest, the Festival of Lights and many other celebrations are held on the Village Square, a public plaza. Another place people gather for special events is Tradition Square, where the annual Taste of Little Italy festival, semimonthly Food Truck Invasion and New Year's Eve celebration and fireworks take place.

The New York Mets come to town for spring training each year, and residents can cheer on the home minor league team, the St. Lucie Mets, from April to September. Club Med Sandpiper Bay, an all-inclusive resort on the St. Lucie River, gives locals the chance to escape, offering day and evening passes granting access to the spa, restaurants, entertainment, swimming pools, paddle boarding on the river and kids' activities.

The PGA Village features courses designed by Tom Fazio and Pete Dye. There are also several more affordable courses located in Port St. Lucie, and the weather allows golfers to play year-round.

Rankings

U.S. News analyzed 150 metro areas in the United States to find the best places to live based on quality of life and the job market in each metro area, as well as the value of living there and people's desire to live there.

Port St. Lucie is ranked:

- **#73 in Best Places to Live**
- **#3 in Best Places to Retire**
- **#8 in Fastest-Growing Places**
- **#11 in Best Places to Live in Florida**
- **#17 in Most Expensive Places to Live**

For Lease Industrial/Warehouse

2190 Reserve Park Trace, Port St. Lucie, FL 34986



The population of the Treasure Coast's largest city more than doubled since 2000, making it one of the fastest-growing cities in America.

Port St. Lucie grew from 88,769 to 178,778, or 101.4%, according to 24/7 Wall Street, a financial news and opinion website.

Recently, the city also was named one of the safest cities in the U.S. and one of the best places to retire.

"(Mayor Greg Oravec) often says we are lucky to have many compelling narratives in Port St. Lucie," said city spokesperson Sarah Prohaska.

The cost of living in Port St. Lucie is 3% less than the national average, according to 24/7 Wall Street, which also could be a factor in the city's high rate of homeownership, Prohaska added.

"All of this is happening, but we still haven't lost our hometown feel," she said.

The city's strategic plan, which is updated every year based on feedback from residents, focuses on safety and prosperity, Prohaska said. Positive changes such as the recent opening of the Crosstown Parkway Bridge and other neighborhood improvements reflect that, she said.

"People are seeing that positive momentum and want to be a part of it," she said.

The nation's fastest-growing city, McKinney, Texas, more than tripled in population, growing from 54,369 to 164,760. Only two other Florida cities ranked in the top 25: Cape Coral at No. 18 and Miramar at No 11.



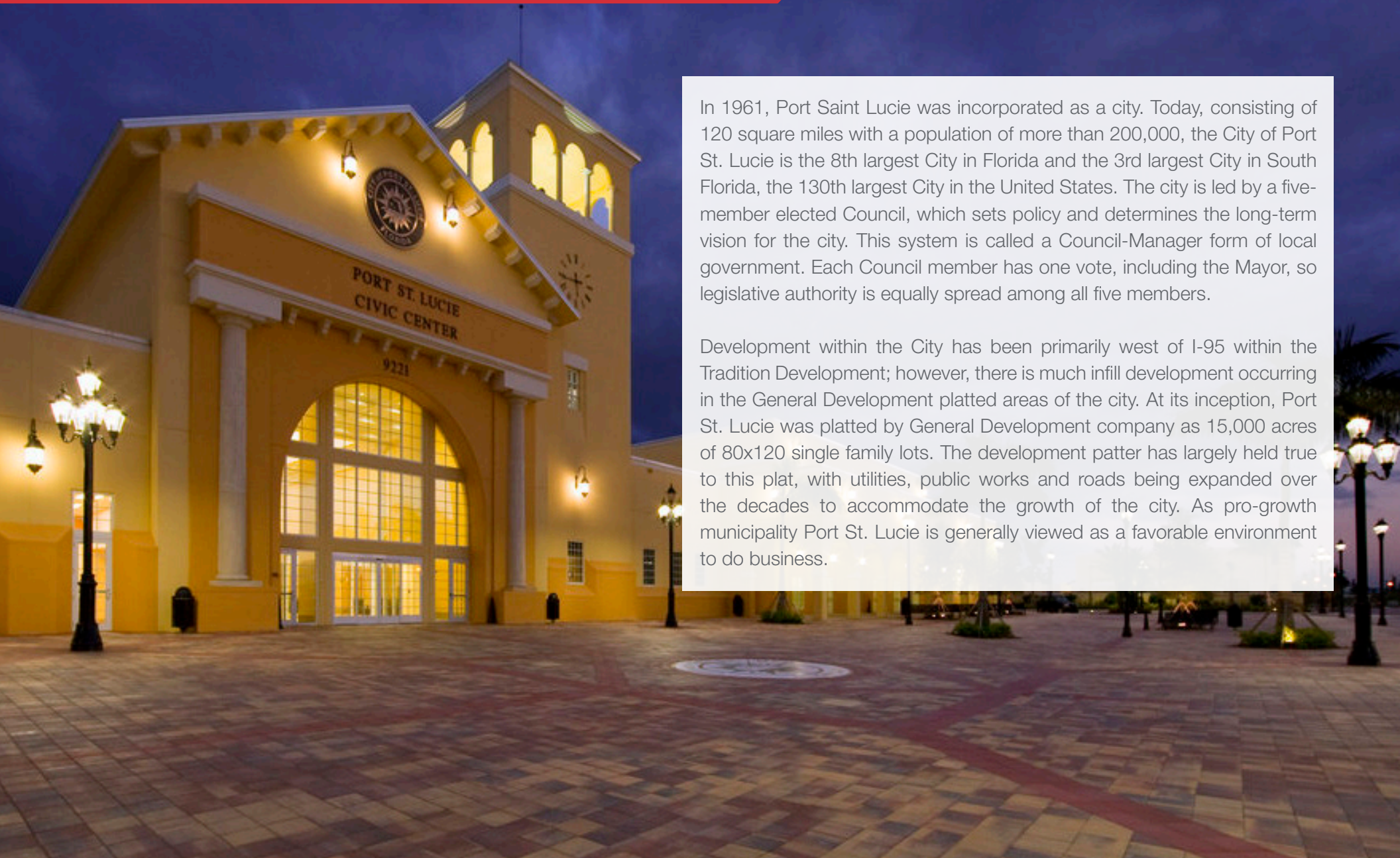
TREASURE COAST NEWSPAPERS | November 15, 2019

The 10 fastest-growing cities in the U.S., according to 24/7 Wall Street:

- McKinney, Texas**
- Elk Grove, California**
- Louisville, Kentucky**
- Gilbert, Arizona**
- North Las Vegas, Nevada**
- Port St. Lucie, Florida**
- Renton, Washington**
- Temecula, California**
- Round Rock, Texas**
- Victorville, California**

City Overview

Port St. Lucie, Florida



In 1961, Port Saint Lucie was incorporated as a city. Today, consisting of 120 square miles with a population of more than 200,000, the City of Port St. Lucie is the 8th largest City in Florida and the 3rd largest City in South Florida, the 130th largest City in the United States. The city is led by a five-member elected Council, which sets policy and determines the long-term vision for the city. This system is called a Council-Manager form of local government. Each Council member has one vote, including the Mayor, so legislative authority is equally spread among all five members.

Development within the City has been primarily west of I-95 within the Tradition Development; however, there is much infill development occurring in the General Development platted areas of the city. At its inception, Port St. Lucie was platted by General Development company as 15,000 acres of 80x120 single family lots. The development patter has largely held true to this plat, with utilities, public works and roads being expanded over the decades to accommodate the growth of the city. As pro-growth municipality Port St. Lucie is generally viewed as a favorable environment to do business.

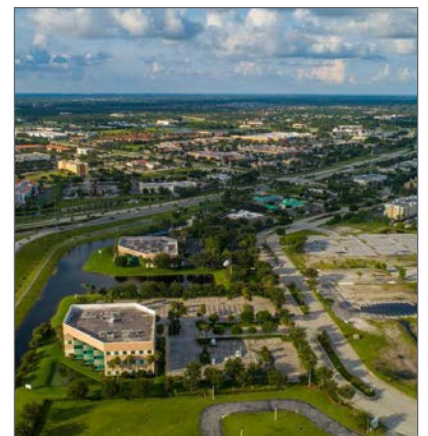
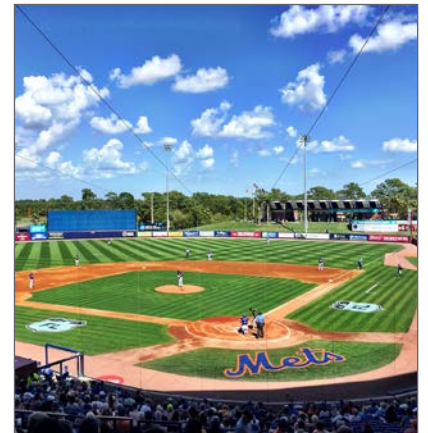
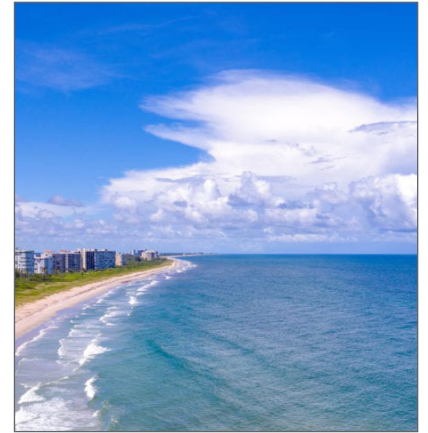
Regional Overview

St. Lucie County, FL

Extensive, dependable transportation and easy access is the key to growth, and St. Lucie County has both in abundance. Interstate Highway 95 and U.S. Highway 1 provide easy access to the country's east coast, from Key West to Maine. The Florida Turnpike stretches from just south of Miami through northern-central Florida, while State Road 70 runs from U.S. Highway 1 in Fort Pierce west to Bradenton, Florida. St. Lucie County offers a plethora of transportation linkages which include rail, a custom-serviced international airport, and a deep-water port – all of which enable easy access to all St. Lucie County has to offer. The St. Lucie County International Airport is also one of the busiest general aviation airports in the state.

The county has a population of over 328,000 and has experienced growth of over 18% since 2010. The area economy is a blend of emerging life science R&D with traditional manufacturing, agriculture, tourism and services. St. Lucie County's natural resources are enviable, with more than 21 miles of pristine coastline and beaches, coral reefs, more than 20,000 acres of public parks and nature preserves, and miles of rivers and waterways. The area boasts over 20 public and semiprivate courses, with prices ranging from upscale to very affordable, and the great weather allows for play all year round. St. Lucie County is home to Clover Park in Port St. Lucie, the Spring training home of the New York Mets.

The county is host to Indian River State College, an institution that has won national recognition for excellence and innovation applied toward training and education. St. Lucie County boasts 39 schools with a total of 41,409 students and 5,205 staff. The Economic Development Council of St. Lucie County (EDC) is a non-profit organization with the goal of creating more, high-paying jobs for residents by working in concert on agreed upon strategies to promote the retention and expansion of existing businesses, as well as attracting new ones to St. Lucie County. Workers employed in St. Lucie County are clustered in the Health Care and Social Assistance (18.4%), and Retail Trade (11.9%) industries. Workers living in St. Lucie County are concentrated in the Health Care and Social Assistance (16.3%), and Retail Trade (14.1%) industries. Since 2017 the EDC has facilitated 40 expansion and new attraction job creating projects with a net growth of building area of approximately 6,500,000 square feet.





Nikolaus M. Schroth, CCIM
Broker Associate | Principal
+1 772 286 6292
nikschroth@naisouthcoast.com



J. Jeffery Allman, Jr.
Sales Associate
+1 772 283 1555
jeff@naisouthcoast.com



James McKinney
Sales Associate
+1 772 349 3414
jamesmckinney@naisouthcoast.com

Industrial/Warehouse For Lease

2190 Reserve Park Trace, Port St. Lucie, FL 34986



FOR LEASE:

\$17.00/SF Gross