



ONLY ONE SPACE LEFT!

1105-1295 West Airport Boulevard, Sanford, Florida 32773

Property Features

- Glass storefronts on Buildings 1, 2 and 3
- Grade-level double doors to the rear
- Clear height: 11' - 14'
- Fire suppression system
- Zoning: PD (City of Sanford)
- Great visibility with frontage on Airport Blvd, at intersection of Old Lake Mary Road
- Easy access to US Highway 17-92, SR 46, SR 417 (GreeneWay), Lake Mary Blvd and I-4
- Surrounded by dense residential development
- Less than 5 miles from Orlando-Sanford International Airport

Available Space

Building 3 - Office/Retail/Warehouse

- 1205 West Airport Blvd - 1,925± SF
100% A/C | 100% office
\$14.00/SF NNN



Lease Rate

\$14.00/SF NNN

Operating Expenses: \$5.33/SF

For more information:

Mary Frances West, CCIM

+1 407 949 0725

mfwest@realvest.com

04.04.24

The information contained herein has been given to us by the owner of the property or other sources we deem reliable. We have no reason to doubt its accuracy, but we do not guarantee it. All information should be verified prior to purchase or lease. Unless otherwise noted, the property is being offered as-is, where is, with all faults.

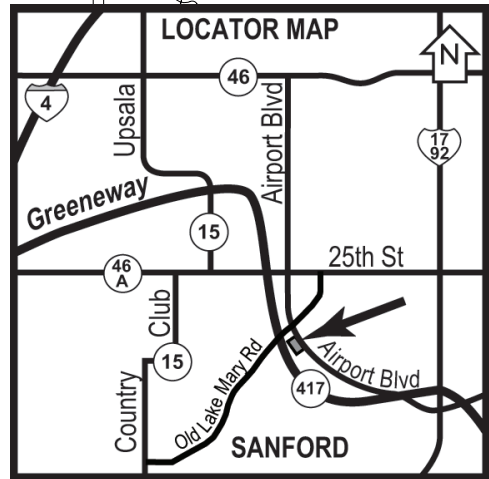
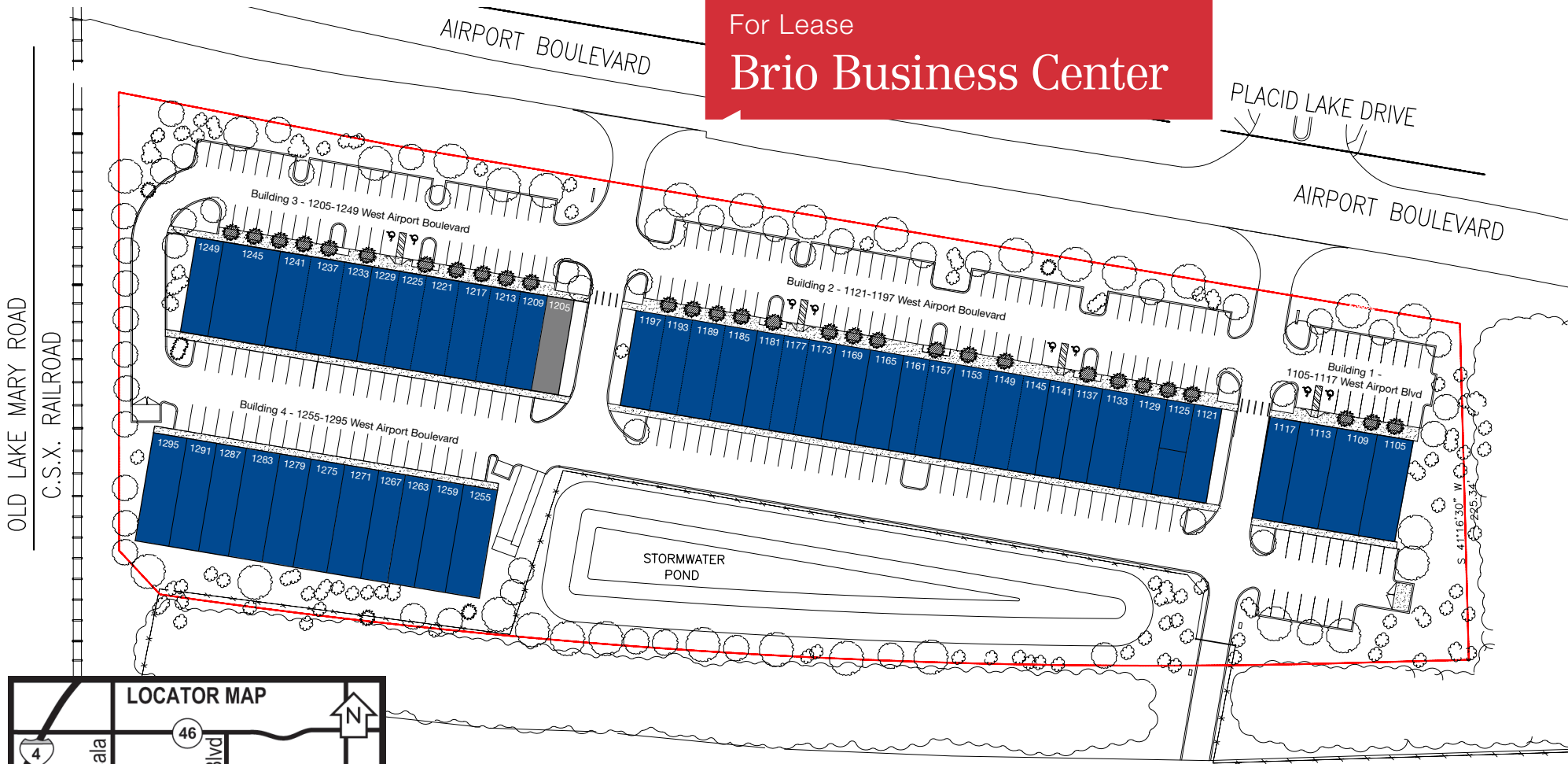
1800 Pembroke Drive, Suite 350

Orlando, Florida 32810

+1 407 875 9989

nairealvest.com

For Lease
Brio Business Center



Leased
 Available



STATE ROAD NO. 417



For more information:
Mary Frances West, CCIM
 +1 407 949 0725
 mfwest@realvest.com

1800 Pembroke Drive, Suite 350
 Orlando, Florida 32810
 +1 407 875 9989
nairealvest.com

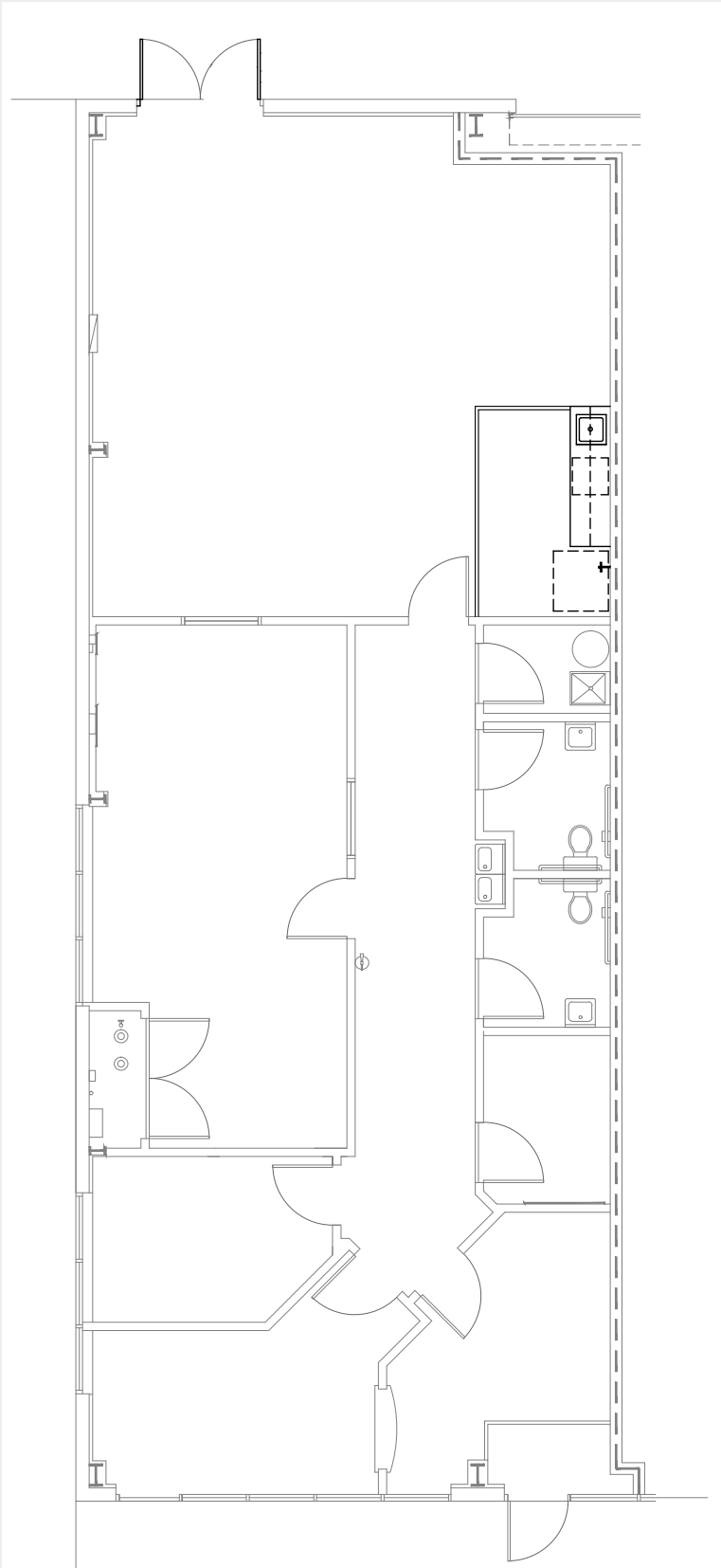
For Lease

Brio Business Center Floor Plans

1105 - 1295 West Airport Blvd
Sanford, Florida 32773

Building 3 1205 West Airport Blvd

- 1,925± SF
- 100% A.C.
 - Reception / waiting area
 - Conference / training room
 - 3 private offices
 - Large open office/work area
 - Break area
 - 2 restrooms



For more information:

Mary Frances West, CCIM

+1 407 949 0725

mfwest@realvest.com