

±1,000-2,000 SF Warehouse For Lease

2850 SE Market Place, Stuart, FL 34997

NAI Southcoast



Presented by

Douglas Legler

Principal | Broker Associate
+1 772 405 7778
douglas@naisouthcoast.com
www.naisouthcoast.com

Casey Combs

Sales Associate
+1 772 285 8769
ccombs@naisouthcoast.com
www.naisouthcoast.com

FOR LEASE:

\$20.00/SF Modified Gross (2,000 SF)

\$22.00/SF Modified Gross (1,000 SF)

±1,000-2,000 SF Warehouse For Lease

2850 SE Market Place, Stuart, FL 34997

Property Details

Address: 2850 SE Market Place, Stuart, FL 34997

Space Available: Unit 7 - ±2,000 SF
Unit 17 - ±1,000 SF

Lease Rate: Unit 7 - \$3,333.33/month (plus sales tax)
Unit 17 - \$1,833.33/month (plus sales tax)

Property Overview

This property offers both warehouse and office space. The building features 20' clear-high ceilings with 14' overhead powered door. Conveniently located off US Highway 1 with access from Market Place, this central location easily serves the entire region along the Treasure Coast.

Other businesses in the building include the Athletic Factory and Brandster Outdoor Furniture. Join these brands in this prime location across the street from the Stuart Walmart.

Property Highlights

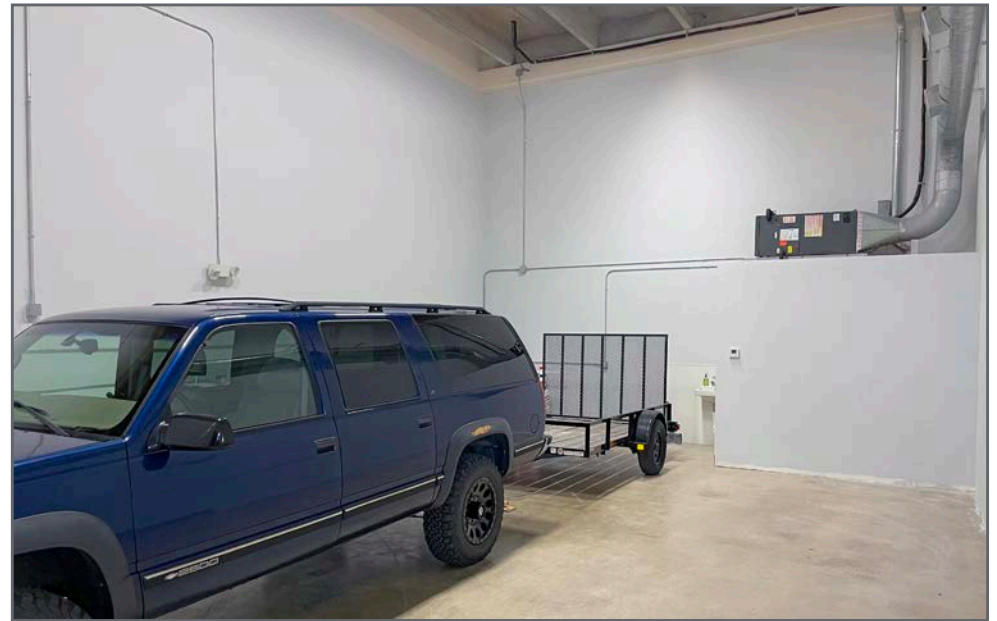
- 14' high overhead electric door(s)
- 20' ceiling height
- A/C in office
- Concrete construction
- Signage on space entrance



±1,000-2,000 SF Warehouse For Lease

2850 SE Market Place, Stuart, FL 34997

Unit 17 (±1,000 SF)



±1,000-2,000 SF Warehouse For Lease

2850 SE Market Place, Stuart, FL 34997

Unit 7 (±2,000 SF)



±1,000-2,000 SF Warehouse For Lease

2850 SE Market Place, Stuart, FL 34997



±1,000-2,000 SF Warehouse For Lease

2850 SE Market Place, Stuart, FL 34997



Witham Field

SE FEDERAL HWY

SE COMMERCE AVE

SE DIXIE HWY

SE MARKET PL



±1,000-2,000 SF Warehouse For Lease

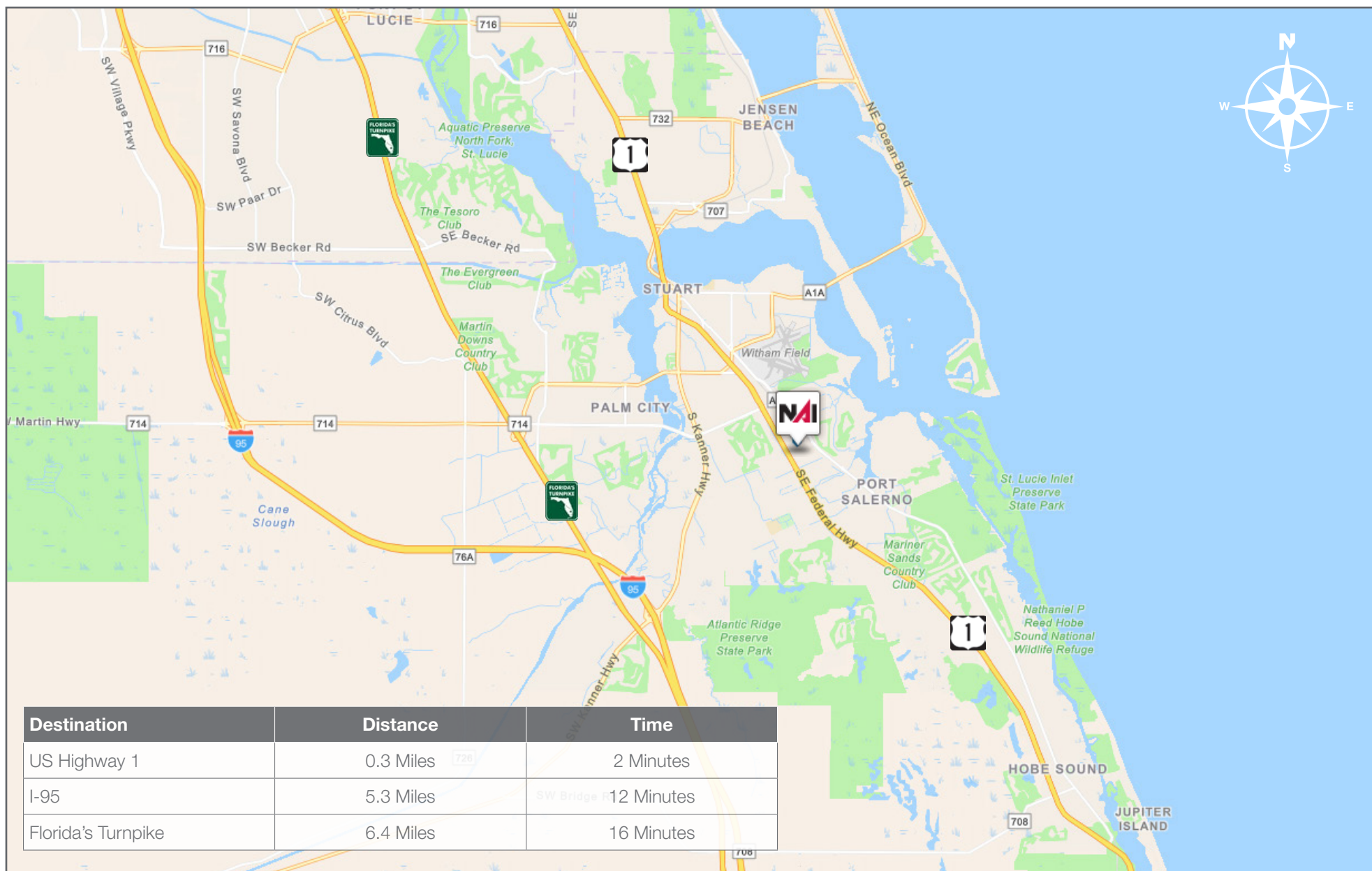
2850 SE Market Place, Stuart, FL 34997



±1,000-2,000 SF Warehouse For Lease

2850 SE Market Place, Stuart, FL 34997

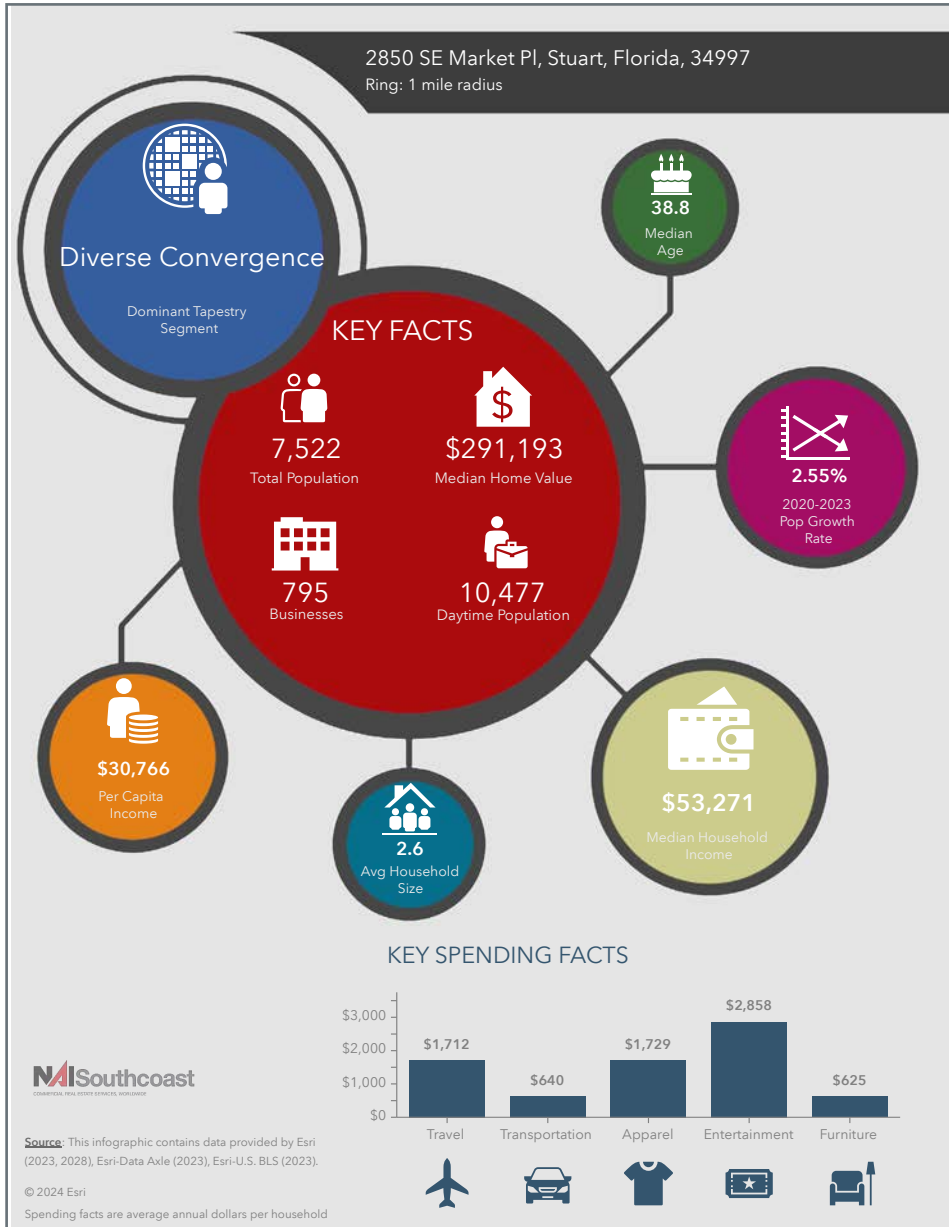
Drive Time



±1,000-2,000 SF Warehouse For Lease

2850 SE Market Place, Stuart, FL 34997

2023 Demographics



Population

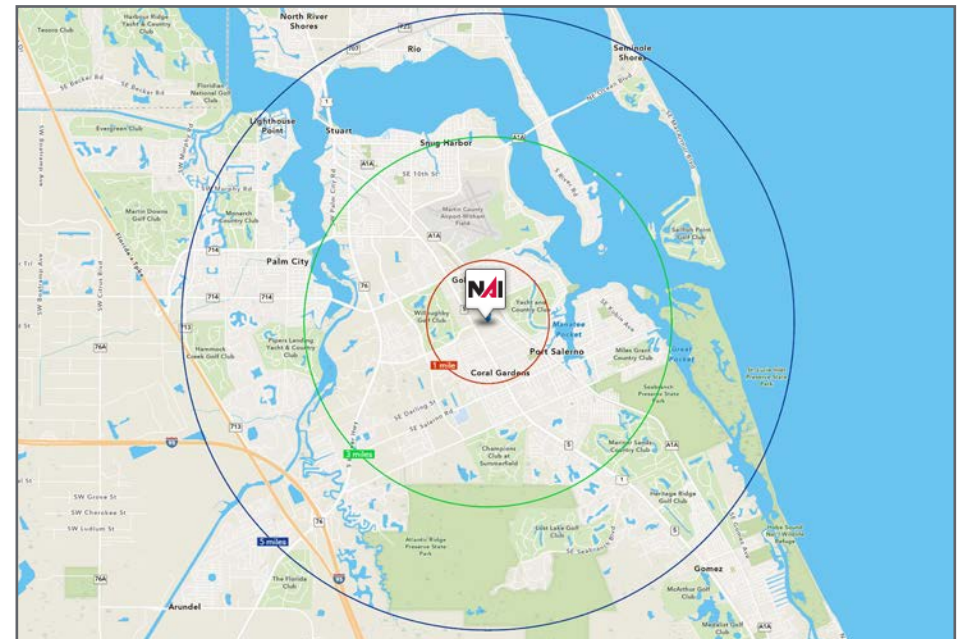
- 1 Mile: 7,522
- 3 Mile: 49,865
- 5 Mile: 90,658

Average Household Income

- 1 Mile: \$82,501
- 3 Mile: \$87,845
- 5 Mile: \$103,830


Median Age

- 1 Mile: 38.8
- 3 Mile: 50.3
- 5 Mile: 56.0



City Overview

Stuart, Florida



Stuart, Florida is located on Florida's East Coast, near the St. Lucie River Inlet and Hutchinson Island South. Local beaches, parks, waterways, and top-rated schools make Stuart one of the best areas in Florida to live for families and retirees.

Stuart is famous as the Sailfish Capital of the World. You can enjoy both freshwater and saltwater fishing at any of Stuart's rivers, intracoastal waterways, or ocean boating areas. Boat owners enjoy cruising up and down the North and South forks of the St. Lucie River. Stuart has quaint older neighborhoods in the downtown area with a mixture of town homes and condominiums. Stuart's successful revitalization program has made the downtown area the place to be, lined with shops and restaurants.

The top employers in Stuart include Cleveland Clinic Hospital, Vought Aircraft, the Martin County School District, and thousands of successful small businesses. The economy is driven by retail service, hospitality, construction, and government sectors located throughout the city.

Stuart is a growing community, approximately 9.5 square miles in area. The city is planning and implementing a diverse revitalization project in several sectors of the community, including a Business Improvement Grant Program, Community Redevelopment Block Grant, Design Assistance Program, and other programs to support solar energy, residential improvements, and neighborhood revitalization.

County Overview

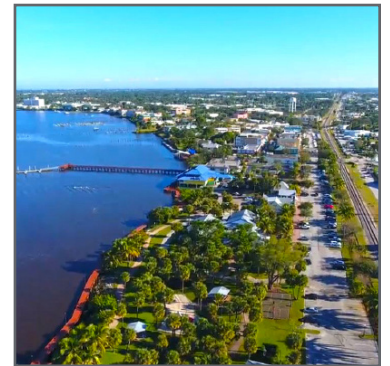
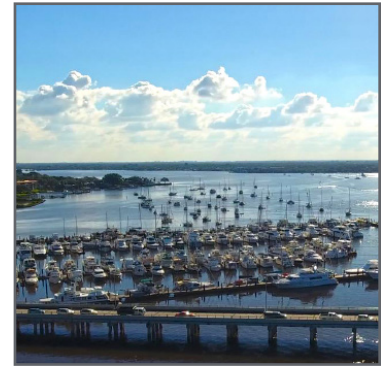
Martin County, Florida

The cities that make up Martin County are Jensen Beach/Rio, Stuart/Sewall's Point, Hutchinson Island, Hobe Sound, Jupiter/Tequesta, Palm City, Port Salerno, and Indiantown. Martin County is a wonderful place to visit and live, with beaches, golf, fishing, and boating. The County boasts arts amenities, quaint downtowns with shops, gourmet dining, and galleries, museums, historic places, festivals and more.

Martin County is for...

The golf enthusiast... Martin County is home to over 35 world-class golf courses, all within a 15-mile radius. The sun worshiper... The County offers its visitors and residents alike some of the finest beaches on the east coast. The discriminating arts shopper... More than 20 galleries participate in a monthly First Thursday gallery night. Many of these galleries are in the historic downtowns of Stuart, Jensen Beach, Port Salerno, and Hobe Sound. The music lover... The historic Lyric Theatre offers a wide array of first-class talent nearly 300 days a year... This acoustically amazing theatre features concerts for all music lovers, from classical to rock and roll, and theatrical performances by local and national talent. For the die-hard festivals-goer... There are plenty to choose from including the Port Salerno Seafood Festival, BookMania, ArtsFest, Pineapple Festival, or one of the many festivals throughout the year.

The Treasure Coast Children's Museum is a great place for the kids located at Indian Riverside Park which has a fabulous water play area, fishing, and riverfront views. Often, there are also events in the park including concerts, orchid shows, and more. Indian Riverside Park also features the Maritime and Yachting Museum. Hutchinson Island houses the Elliott Museum, which focuses on art, history and technology. Named after prolific inventor Sterling Elliott, the museum houses permanent exhibits, including Model A trucks, early transportation, the history of Stuart and surrounding regions, and baseball memorabilia. For the more scientifically curious kids, the Florida Oceanographic Coastal Center offers a fun opportunity to learn more about our local ecosystem and even feed the stingrays!



Presented By



Douglas Legler

Principal | Broker Associate
+1 772 405 7778
douglas@naisouthcoast.com



Casey Combs

Sales Associate
+1 772 285 8769
ccombs@naisouthcoast.com

±1,000-2,000 SF Warehouse For Lease

2850 SE Market Place, Stuart, FL 34997



FOR LEASE:

\$20.00/SF Modified Gross (2,000 SF)

\$22.00/SF Modified Gross (1,000 SF)