

Naisouthcoast

±1,500-3,000 SF Available

FOR LEASE



500 University Blvd

Jupiter, FL 33458

\$25.00/SF NNN

Property Highlights

- Nicely built out office space
- Located just north of Donald Ross Road off Military Trail
- Ample parking available
- Flexible floor plan

For more information:

Stuart Duffin, P.A., SIOR, CCIM

Broker Associate

+1 772 579 0370 • sduffin@naisouthcoast.com

JJ Sanguily

Sales Associate

+1 772 834 3519 • jj@naisouthcoast.com

NO WARRANTY OR REPRESENTATION, EXPRESS OR IMPLIED, IS MADE AS TO THE ACCURACY OF THE INFORMATION CONTAINED HEREIN, AND THE SAME IS SUBMITTED SUBJECT TO ERRORS, OMISSIONS, CHANGE OF PRICE, RENTAL OR OTHER CONDITIONS, PRIOR SALE, LEASE OR FINANCING, OR WITHDRAWAL WITHOUT NOTICE, AND OF ANY SPECIAL LISTING CONDITIONS IMPOSED BY OUR PRINCIPALS NO WARRANTIES OR REPRESENTATIONS ARE MADE AS TO THE CONDITION OF THE PROPERTY OR ANY HAZARDS CONTAINED THEREIN ARE ANY TO BE IMPLIED.

100 SW Albany Avenue, 2nd Floor

Stuart, Florida 34994

+1 772 286 6292

www.naisouthcoast.com

Overview

Property Overview

The Commons at Abacoa on University Blvd is a 4-star office property with a blend of professional and medical office users. The area gives immediate access to Interstate 95 from Donald Ross Road while also being in close proximity to some of the best shopping, dining, and entertainment the town has to offer.

Property Features

Address:	500 University Blvd Jupiter, FL 33458
Traffic Count:	35,500 AADT on Military Trail
Space Size:	±1,500 - 3,000 SF
Land Area:	6.65 Acres
Year Built:	2005
Zoning:	MXD - Mixed Use Development



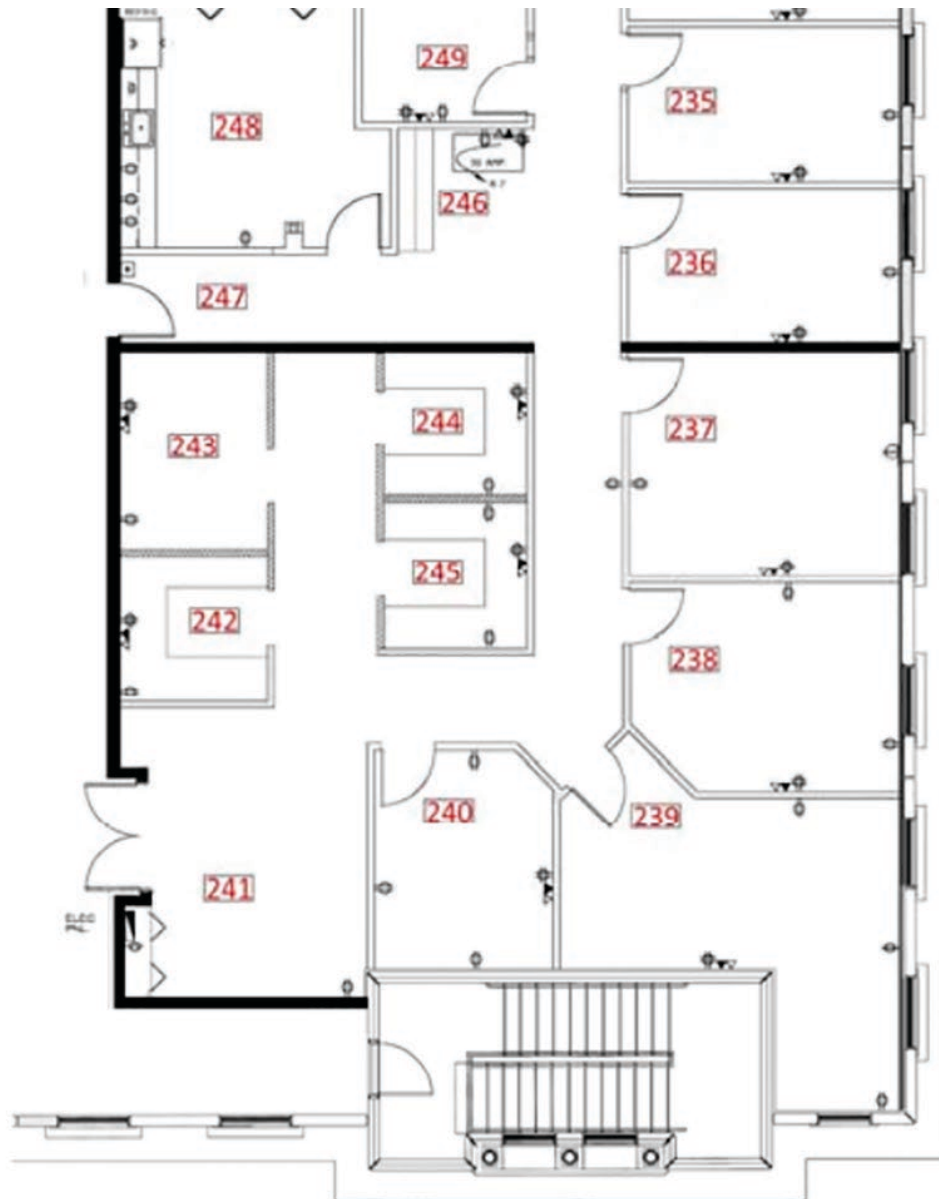
FOR LEASE



NAISouthcoast

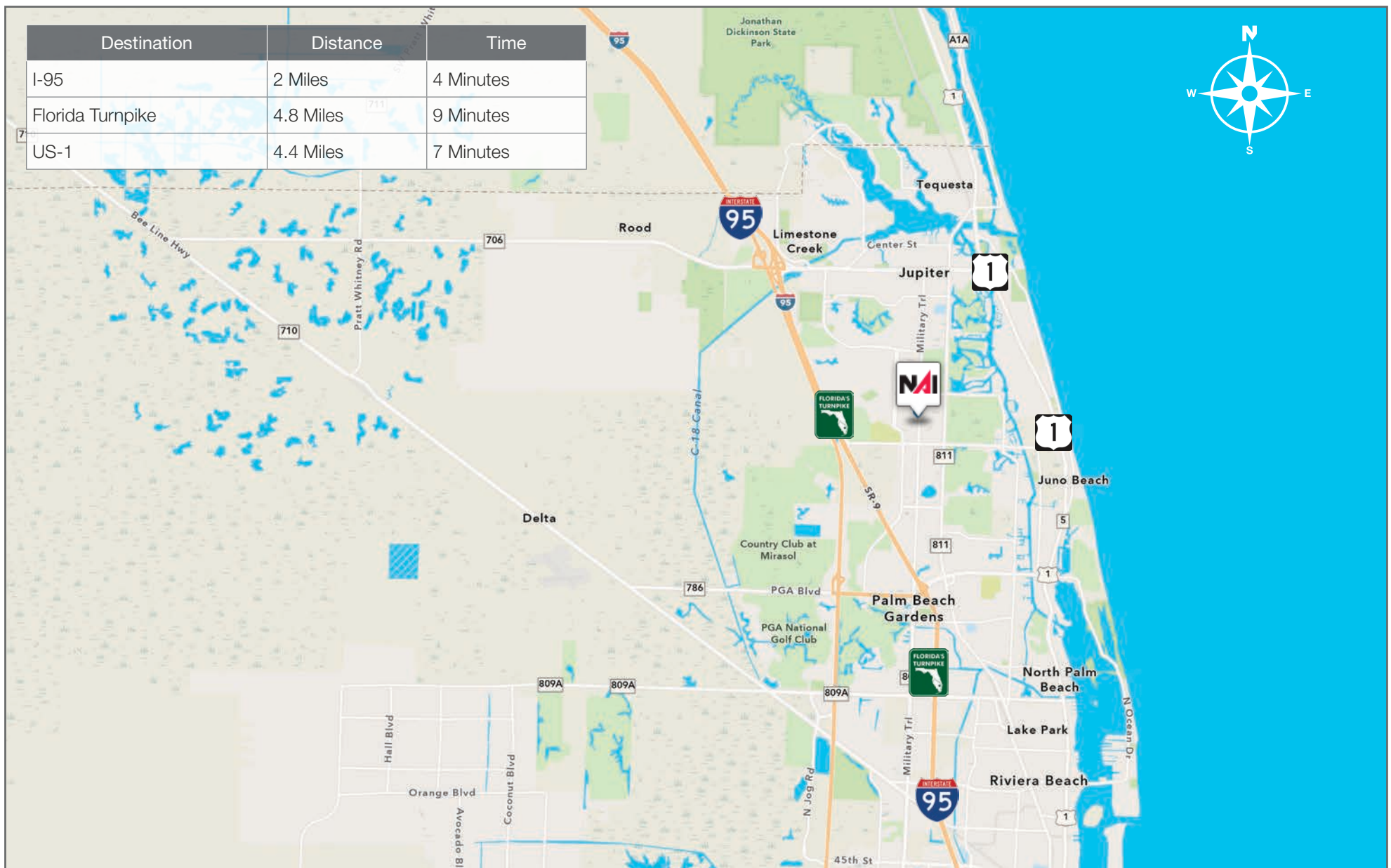
100 SW Albany Avenue, 2nd Floor
Stuart, Florida 34994
+1 772 286 6292
www.naisouthcoast.com

Floor Plan

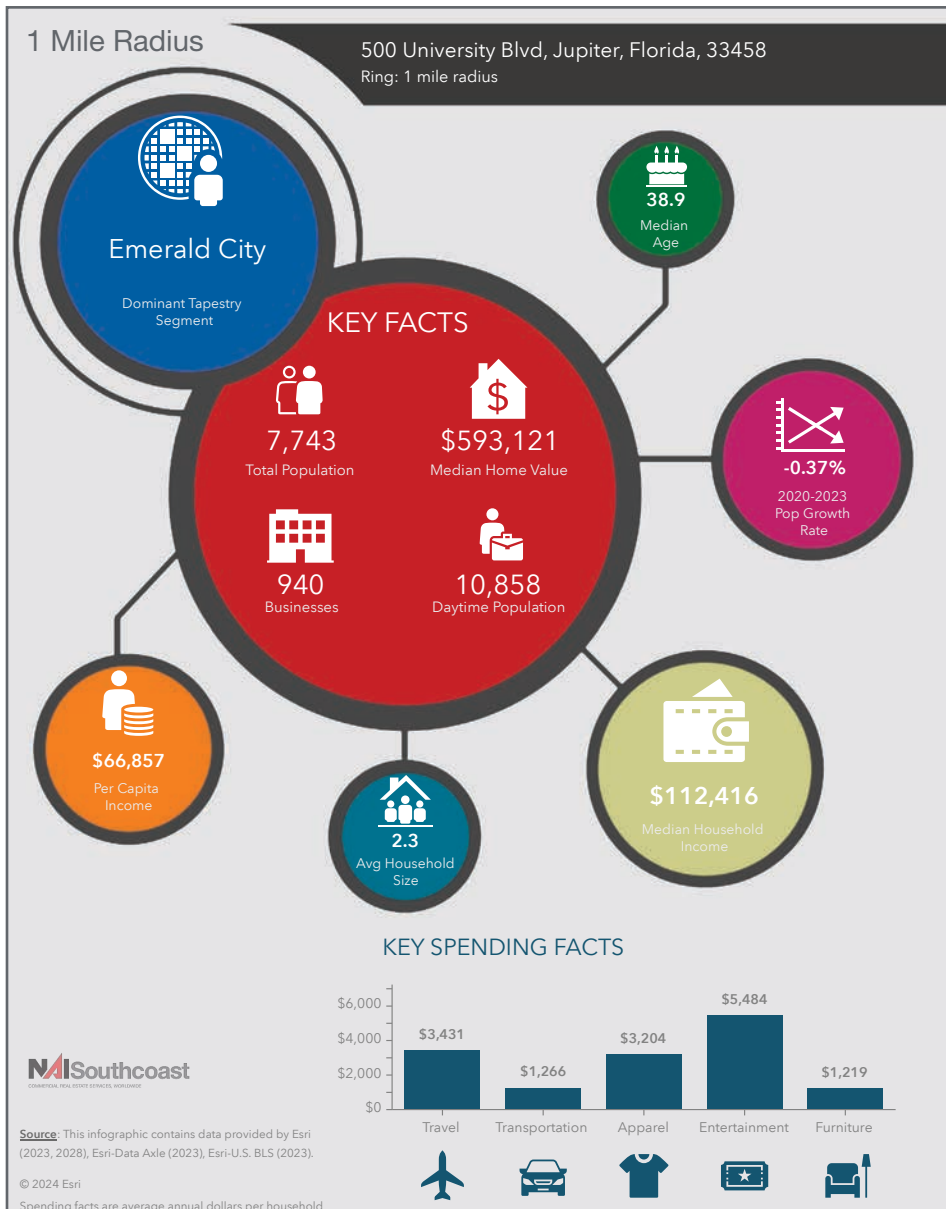


Drive Time

Destination	Distance	Time
I-95	2 Miles	4 Minutes
Florida Turnpike	4.8 Miles	9 Minutes
US-1	4.4 Miles	7 Minutes



2023 Demographics



Population

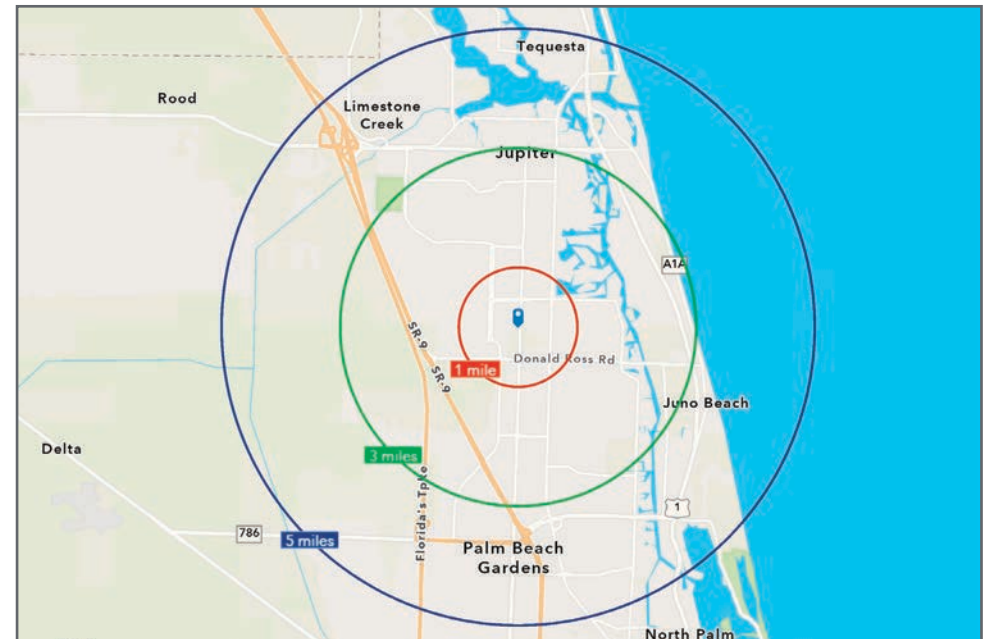
- 1 Mile: 7,743
- 3 Mile: 71,010
- 5 Mile: 140,750

Average Household Income

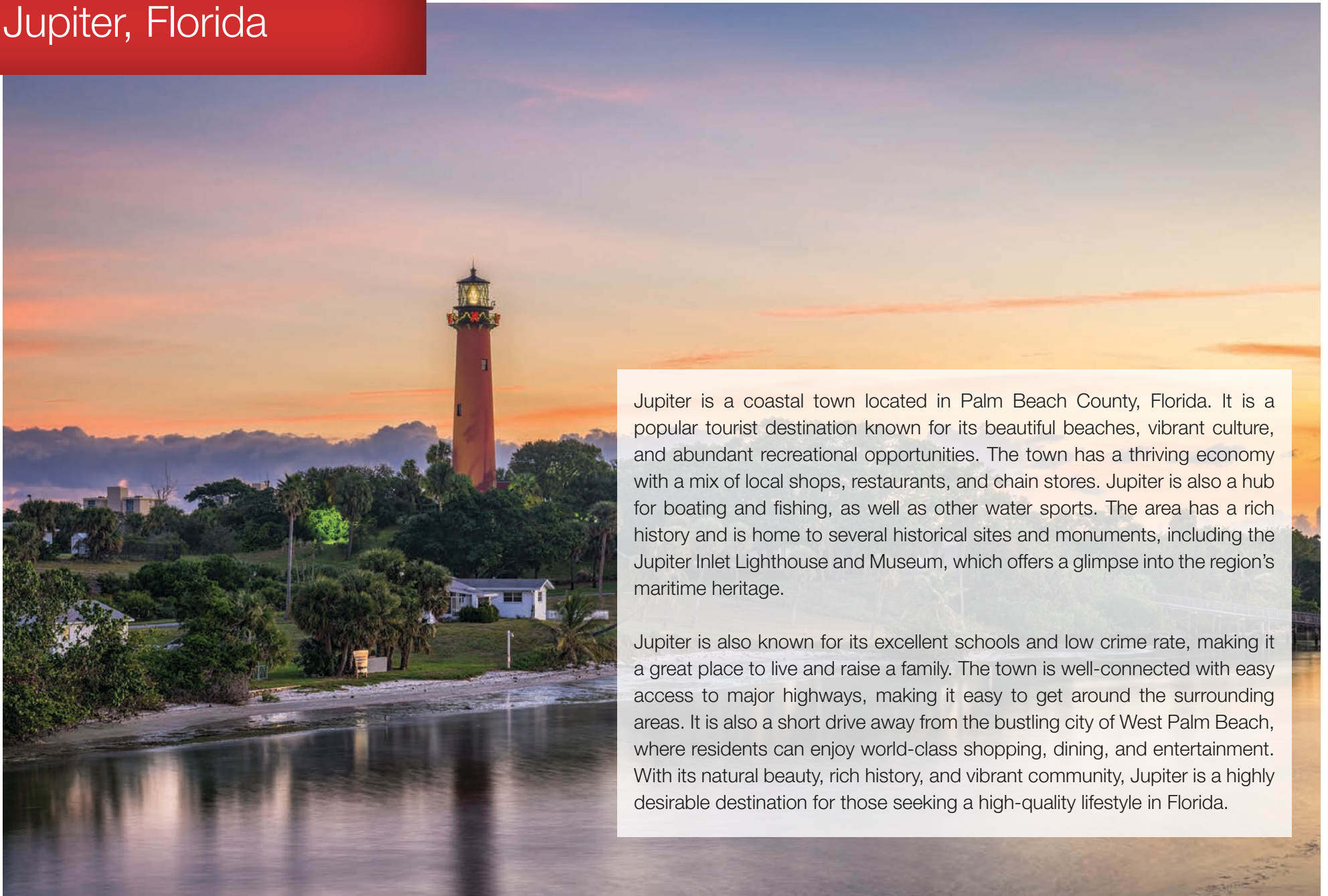
- 1 Mile: \$157,765
- 3 Mile: \$158,386
- 5 Mile: \$150,442

Median Age

- 1 Mile: 38.9
- 3 Mile: 48.3
- 5 Mile: 50.8



Jupiter, Florida



Jupiter is a coastal town located in Palm Beach County, Florida. It is a popular tourist destination known for its beautiful beaches, vibrant culture, and abundant recreational opportunities. The town has a thriving economy with a mix of local shops, restaurants, and chain stores. Jupiter is also a hub for boating and fishing, as well as other water sports. The area has a rich history and is home to several historical sites and monuments, including the Jupiter Inlet Lighthouse and Museum, which offers a glimpse into the region's maritime heritage.

Jupiter is also known for its excellent schools and low crime rate, making it a great place to live and raise a family. The town is well-connected with easy access to major highways, making it easy to get around the surrounding areas. It is also a short drive away from the bustling city of West Palm Beach, where residents can enjoy world-class shopping, dining, and entertainment. With its natural beauty, rich history, and vibrant community, Jupiter is a highly desirable destination for those seeking a high-quality lifestyle in Florida.

FOR LEASE

±1,500-3,000 SF Available



500 University Blvd, Jupiter, FL 33458

\$25.00/SF NNN

Property Features:

- Nicely built out office space
- Located just north of Donald Ross Road off Military Trail
- Ample parking available
- Flexible floor plan



Stuart Duffin, P. A., SIOR CCIM

Broker Associate
+1 772 579 0370
sduffin@naisouthcoast.com



JJ Sanguily

Sales Associate
+1 772 834 3519
jj@naisouthcoast.com

NAISouthcoast

100 SW Albany Avenue, 2nd Floor
Stuart, Florida 34994
+1 772 286 6292
www.naisouthcoast.com