

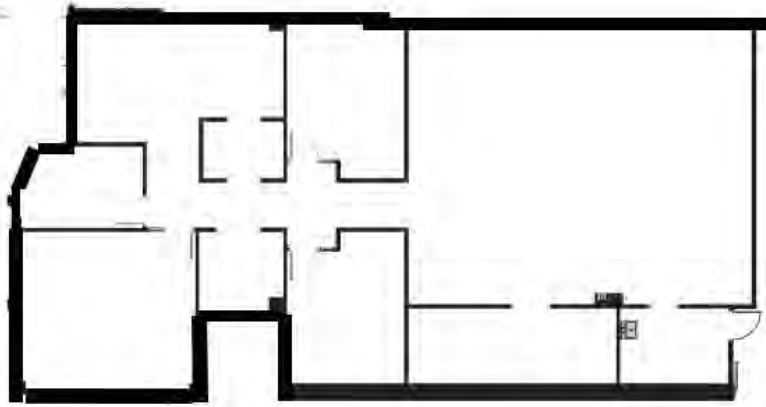
# Bayside Concourse

15500 Lightwave Dr. | Clearwater FL 33760



**HOLD  
THYSSEN**  
REAL ESTATE SERVICES

## Suite 106 | 3,291 SF



- Class "A" Office Space
- Move-In Ready
- Main Lobby Entrance provides a professional corporate identity
- Parking Ratio: 4.55 / 1,000 SF

1st Floor



**RICHARD FISHER**

[rfisher@holdthyssen.com](mailto:rfisher@holdthyssen.com)

M: 727-417-7931