

15,741 SF Industrial Building - For Sale

7397 Commercial Circle, Fort Pierce, FL 34951

NAI Southcoast



KINGS HWY INDUSTRIAL PARK

Presented by

Nikolaus M. Schroth, CCIM

Broker Associate | Principal
+1 772 286 6292
nikschroth@naisouthcoast.com
www.naisouthcoast.com

J. Jeffery Allman, Jr.

Sales Associate
+1 772 286-6292 c +1 772 283 1555
jeff@naisouthcoast.com
www.naisouthcoast.com

James McKinney

Sales Associate
+1 772 349 3414
jamesmckinney@naisouthcoast.com
www.naisouthcoast.com

FOR SALE:

\$2,995,000

15,741 SF Industrial Building - For Sale

7397 Commercial Circle, Fort Pierce, FL 34951

The Offering

Property Details

- Address: 7397 Commercial Circle, Fort Pierce, FL 34951
- Parcel ID: 1335-802-0044-000-4
- Pricing: \$2,995,000 (\$190.27/SF)
- Building Size: 15,741 SF
- Land Size: 1.38 Acres (60,113 SF)
- Utilities: Fort Pierce Utilities Authority
- Zoning: IL, Industrial Light
- Building Height: 18' Eve Height
- OH Doors: (6) 12'x14' metal doors
- Year Built: 2007
- Parking: 31 spaces
- Fire Sprinklers: Yes (6" Mainline service)
- Electrical: 800 Amp 3-Phase service to the building, split into 6 individual panels and a house panel

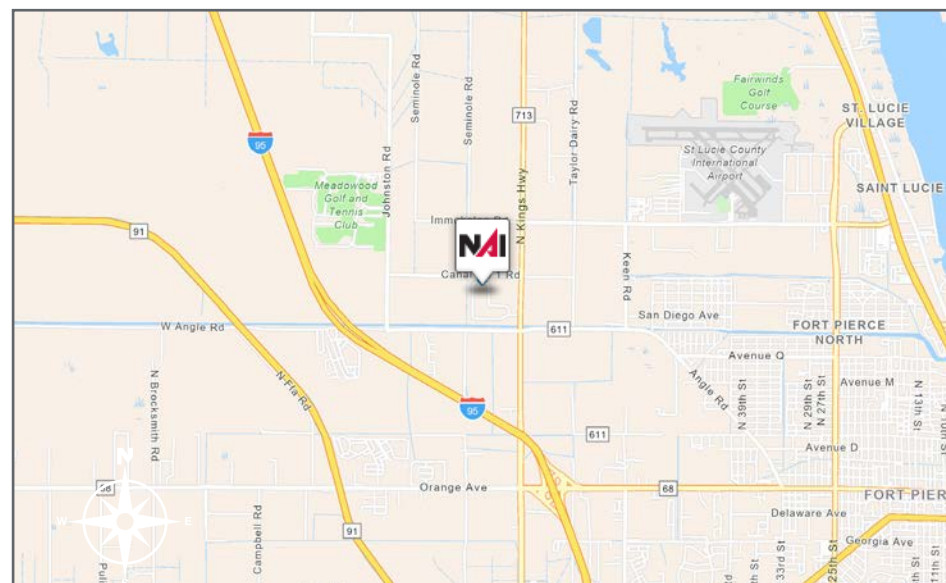


Property Overview

The subject property is a 15,741 square foot flex space warehouse situated on a 1.38 acre parcel of land. The design of the building was originally configured for multiple tenants, but has since been converted to single-tenant use. The orientation of the building on the land is efficient and allows for laydown area and good site circulation. The Highest and Best Use of the property is continued use of the improvements by an owner/user or single tenant.

The property is located in the Kings Highway Industrial Park. Property is well maintained and secure, featuring a gated driveway and ample security lighting. Conveniently located near major highways and dense population centers, this property is ideal for serving the Treasure Coast and beyond.

A leaseback by the current owner is negotiable.



15,741 SF Industrial Building - For Sale

7397 Commercial Circle, Fort Pierce, FL 34951

Aerials



15,741 SF Industrial Building - For Sale

7397 Commercial Circle, Fort Pierce, FL 34951

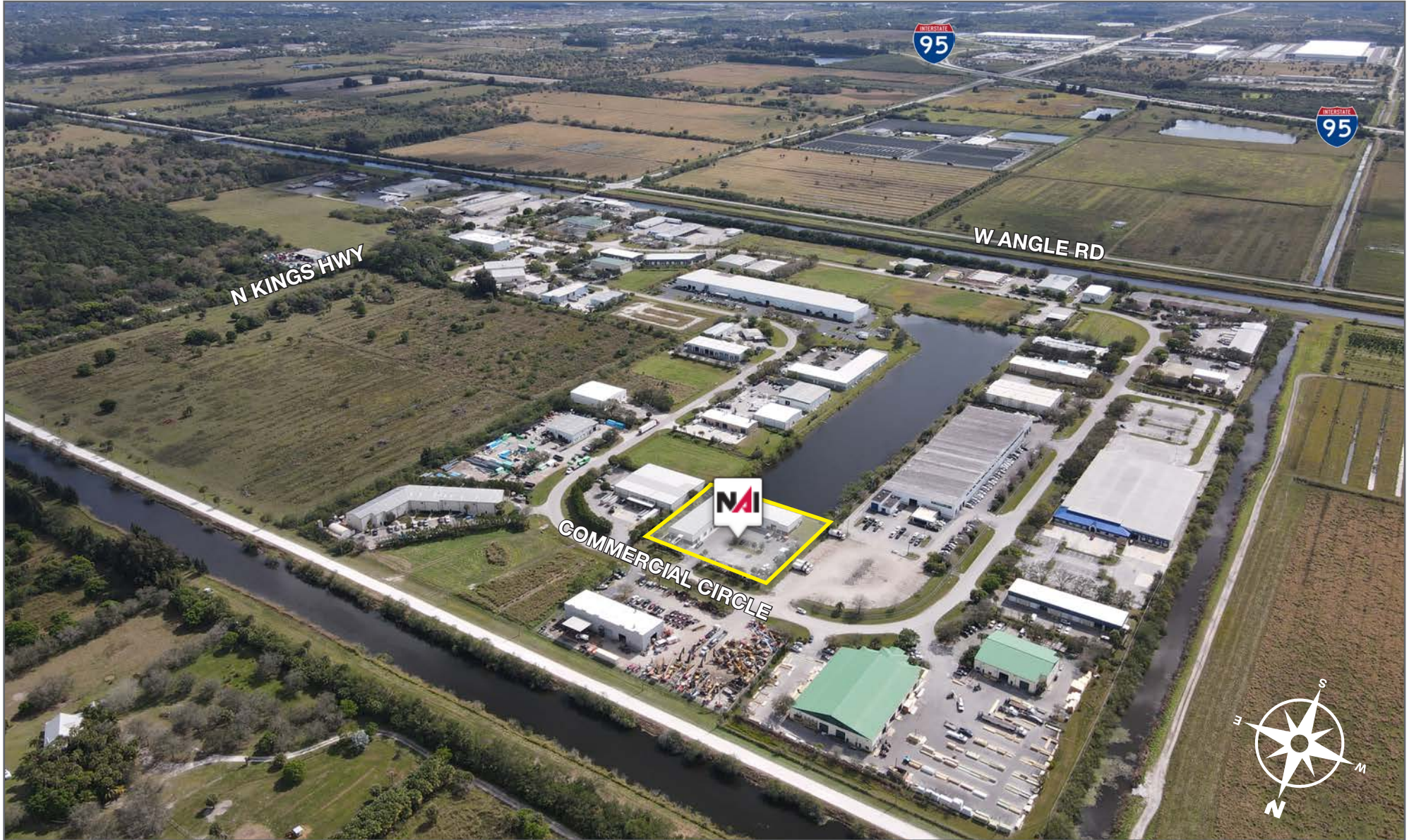
Aerials



15,741 SF Industrial Building - For Sale

7397 Commercial Circle, Fort Pierce, FL 34951

Aerials

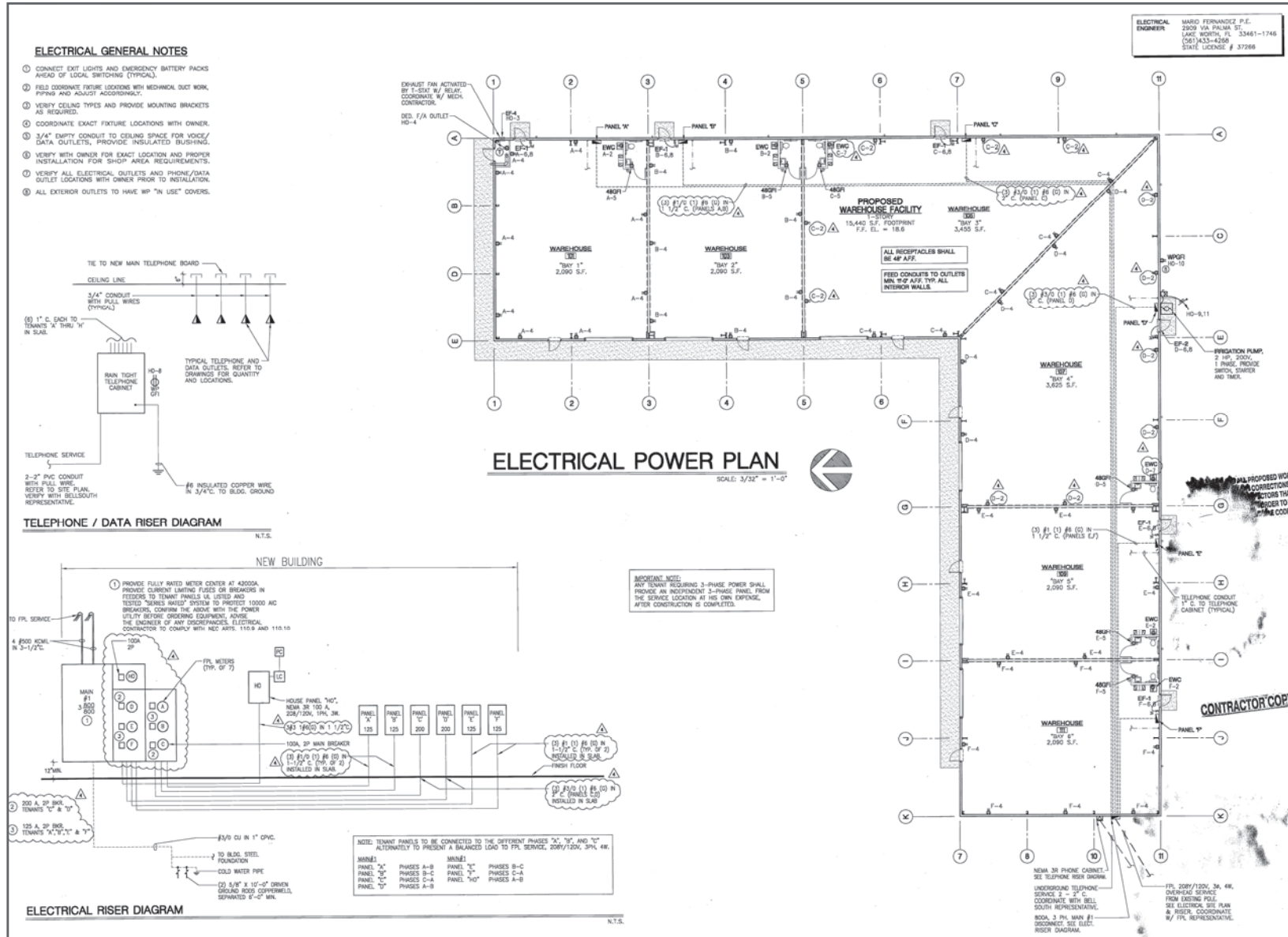


15,741 SF Industrial Building - For Sale

7397 Commercial Circle, Fort Pierce, FL 34951

Aerials

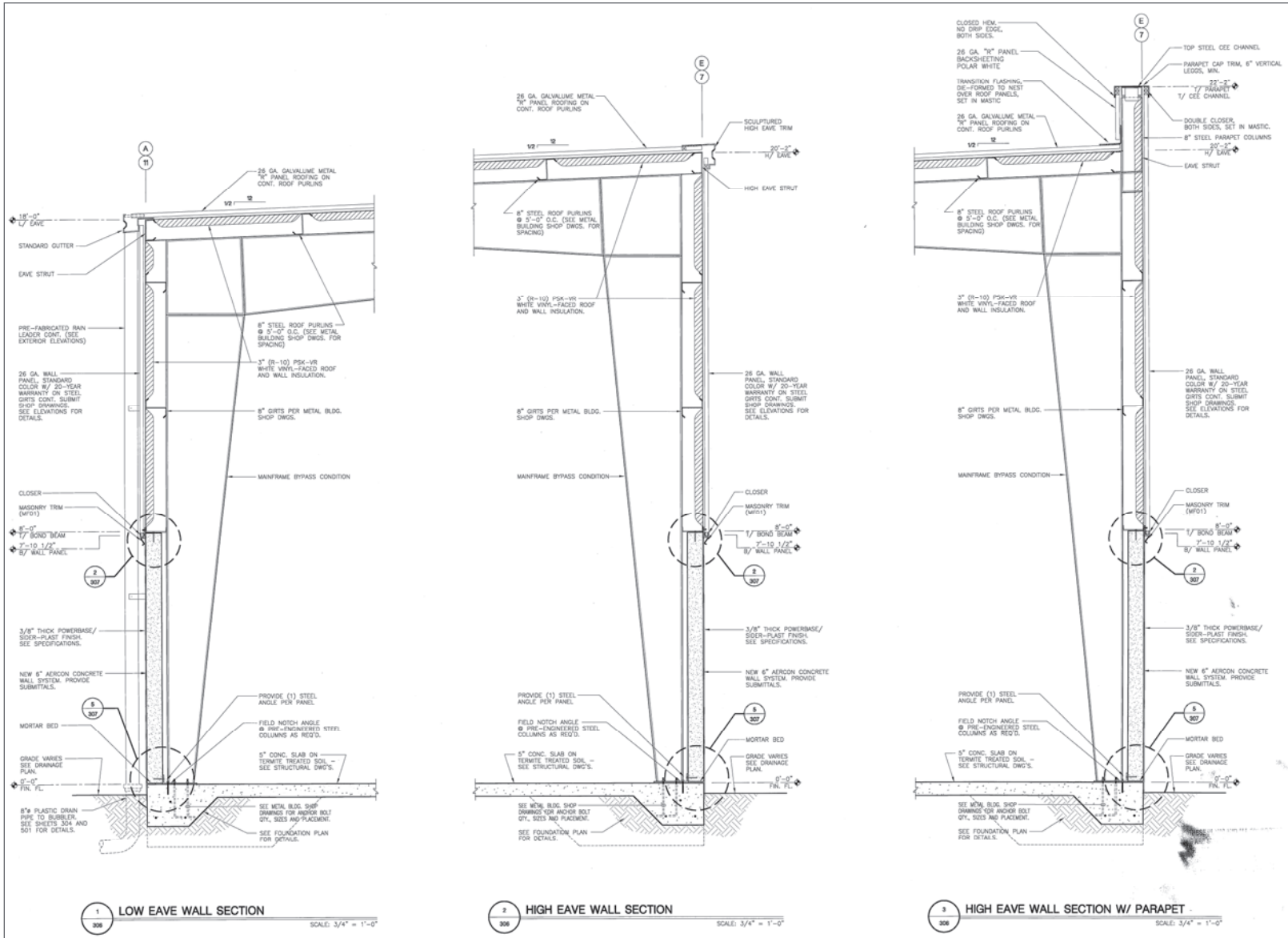




15,741 SF Industrial Building - For Sale

7397 Commercial Circle, Fort Pierce, FL 34951

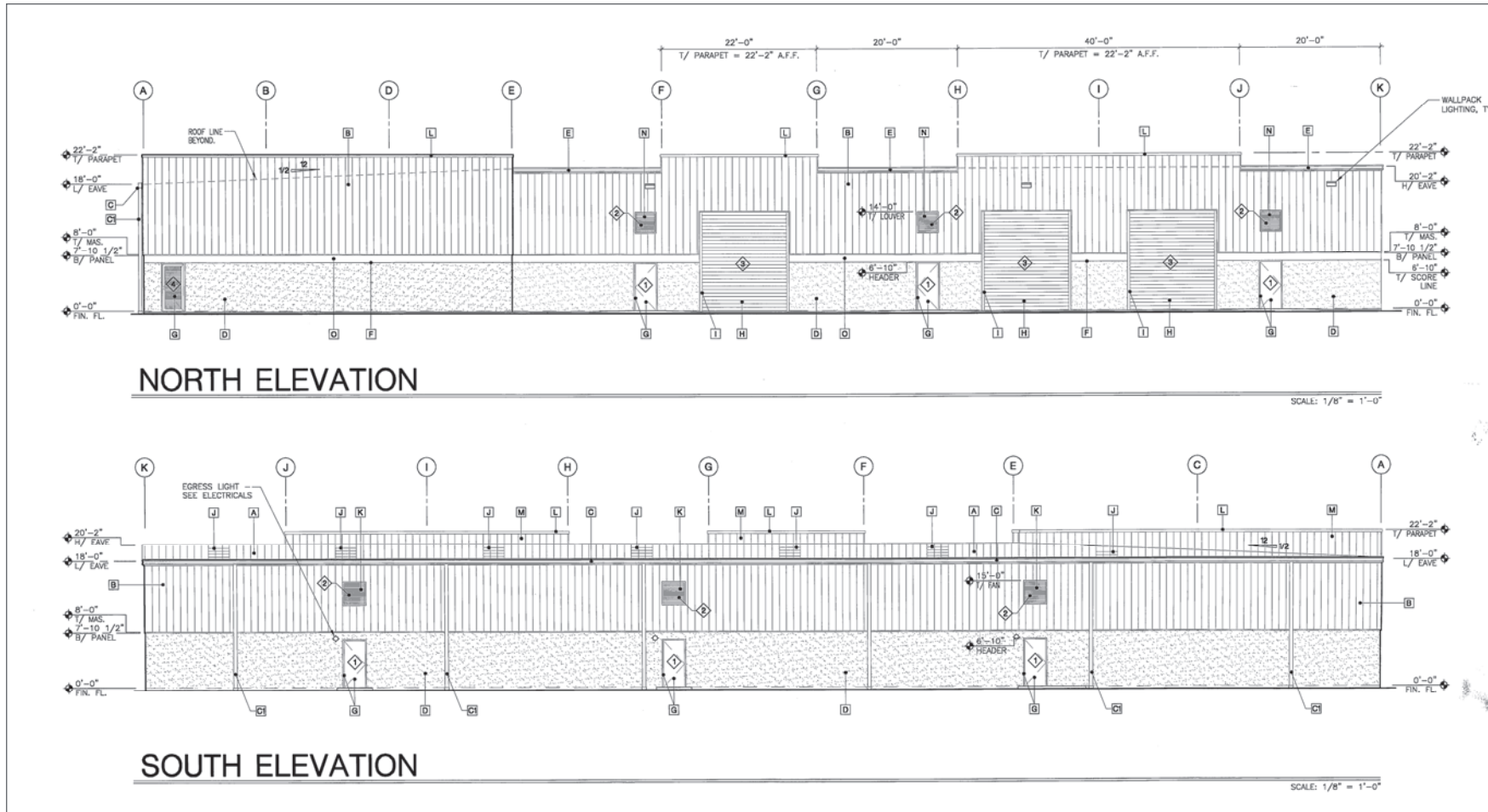
Slab and Wall Detail



15,741 SF Industrial Building - For Sale

7397 Commercial Circle, Fort Pierce, FL 34951

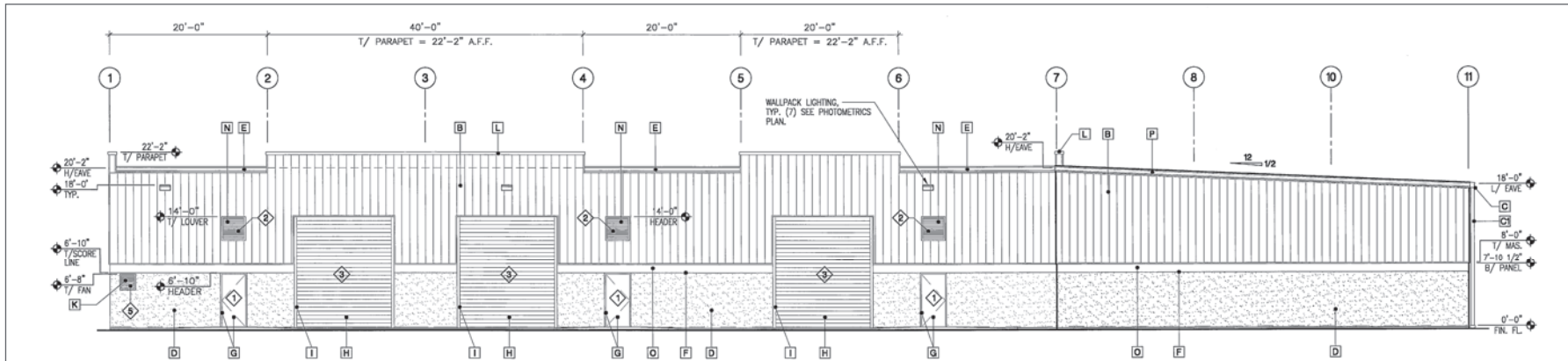
Elevations



15,741 SF Industrial Building - For Sale

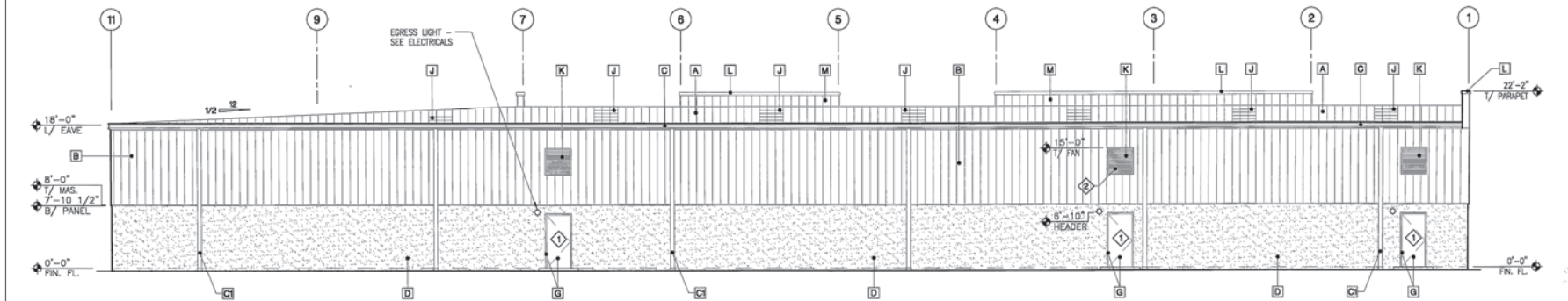
7397 Commercial Circle, Fort Pierce, FL 34951

Elevations



WEST ELEVATION

SCALE: 1/8" = 1'-0"



EAST ELEVATION

SCALE: 1/8" = 1'-0"

15,741 SF Industrial Building - For Sale

7397 Commercial Circle, Fort Pierce, FL 34951

Strong Economic Expansion
2019-Present

Economic Expansion by Year

Calendar Year 2019							
Company	Industry	Location	Project Scope	Projected New Jobs	Baseline Employment	2022 Total Employment	Facility Square Footage
A-1 Industries of Florida	Manufacturing	St. Lucie County	EXPANSION	28	257	290	60,000
ACCEL International	Manufacturing	Port St. Lucie	NEW	125	0	0	150,000
Aerex	Manufacturing	St. Lucie County	EXPANSION	10	25	31	10,000
Amazon	Distribution	St. Lucie County	NEW	500	0	**	60,000
Aquaco Farms	Aquaculture	St. Lucie County	NEW	5	0	8	20,000
Cleveland Clinic Lerner Research Institute	Life Sciences	Port St. Lucie	NEW	50	0	87	60,000
Dirty Deeds Cleaning Service	Small Business	St. Lucie County	EXPANSION	31	44	38	6,000
Drexel Metals	Manufacturing	Port St. Lucie	NEW	25	0	7	25,000
PlusOneAir	Aviation	St. Lucie County	NEW	25	0	27	25,000
Pursuit Boats II	Marine	St. Lucie County	EXPANSION	200	404	684	236,000
Ross Mixing	Manufacturing	Port St. Lucie	EXPANSION	16	40	46	55,000
				1,015	770	1,218	707,000

Calendar Year 2020							
Company	Industry	Location	Project Scope	Projected New Jobs	Baseline Employment	2022 Total Employment	Facility Square Footage
California Closets	Warehouse/Distribution	St. Lucie County	EXPANSION	10	28	48	10,000
Citrus Extracts	Manufacturing	Fort Pierce	NEW	40	35	43	75ft. Tower
FedEx Ground	Warehouse/Distribution	Port St. Lucie	NEW	490	0	543	245,000
Indian River Spirits	Manufacturing	St. Lucie County	NEW	5	0	0	20,000
Interstate Crossroads Business Center by The Silverman Group	Industrial Development	Fort Pierce	NEW	755*	0	0	1,133,000
Legacy Park at Tradition by Sansone Group	Industrial Development	Port St. Lucie	NEW	2,376*‡	0	‡	3,600,000‡
Total Truck Parts	Warehouse/Distribution	Port St. Lucie	EXPANSION	10	16	15	51,780
Wolflube	Warehouse/Distribution	St. Lucie County	NEW	15	0	15	30,000
				3,701	79	664	5,089,780

* Projected new jobs are derived from the US Energy Information Administration Energy Consumption Survey = Median square feet per worker at 1,500 ** Jobs transferred to Port St. Lucie facility in 2022. Projected new jobs and facility square footage net of announced projects within the park.

Calendar Year 2021							
Company	Industry	Location	Project Scope	Projected New Jobs	Baseline Employment	2022 Total Employment	Facility Square Footage
Amazon First-mile Fulfillment Center	Warehouse/Distribution	Port St. Lucie	NEW	500	0	0	1,100,000
Chandler Bats	Manufacturing	Port St. Lucie	NEW	11	0	14	17,000
Chemical Technologies Holdings	Manufacturing	St. Lucie County	NEW	5	0	5	8,000
Cheney Brothers	Warehouse/Distribution	Port St. Lucie	NEW	350	0	0	427,000
Contender Boats	Marine	St. Lucie County	NEW	200	0	84	100,000
D&D Welding	Manufacturing	St. Lucie County	EXPANSION	10	32	85	33,000
FA Precast	Manufacturing	St. Lucie County	EXPANSION	0	22	22	17,000
Freshco/Indian River Select	Manufacturing	Fort Pierce	EXPANSION	20	90	83	16,375
Jansteel	Manufacturing	Port St. Lucie	NEW	55	0	0	67,193
Kings Logistics Center	Industrial Development	St. Lucie County	NEW	433*	0	0	650,000
Maverick Boat Group	Marine	St. Lucie County	EXPANSION	150	520	580	106,000
South Florida Logistics Center 95	Industrial Development	St. Lucie County	NEW	866*	0	0	1,300,000
SRS Distribution	Warehouse/Distribution	Fort Pierce	NEW	11	0	12	32,000
				2,611	664	885	3,873,568

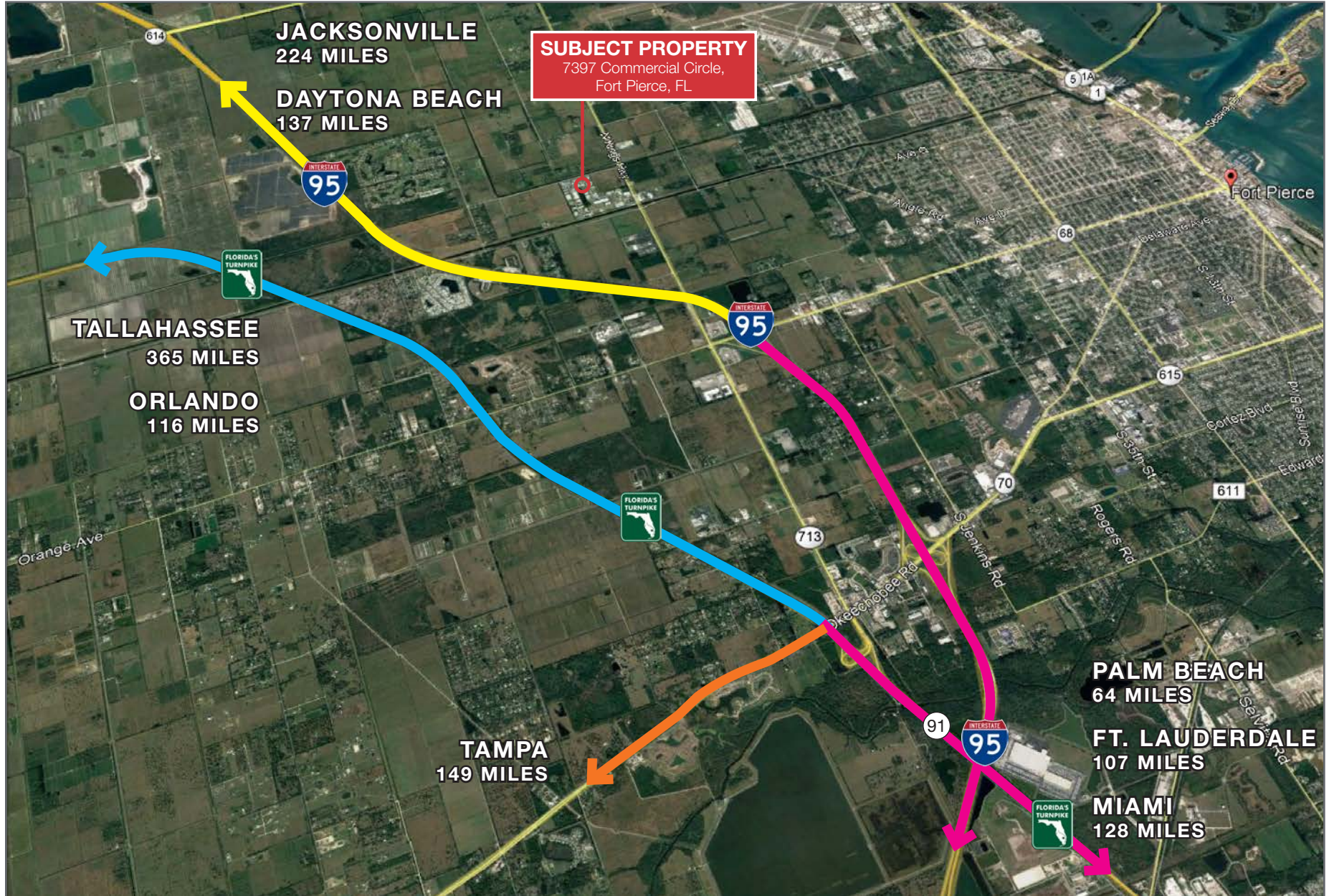
Calendar Year 2022							
Company	Industry	Location	Project Scope	Projected New Jobs	Baseline Employment	2022 Total Employment	Facility Square Footage
Amazon Delivery Station	Warehouse/Distribution	Port St. Lucie	NEW	200**	170	170	220,000
Arcosa Meyer Utility Structures	Manufacturing	St. Lucie County	NEW	99	0	0	89,000
Glades Commerce Center	Industrial Development	Port St. Lucie	NEW	192*	0	0	287,500
Glades Logistics Park	Industrial Development	Port St. Lucie	NEW	236*	0	0	354,200
Interstate Commerce Center	Industrial Development	Fort Pierce	NEW	138*	0	0	207,458
Islamorada Distillery	Manufacturing	St. Lucie County	EXPANSION	15	0	0	19,841
Islamorada Warehouse	Warehouse/Distribution	St. Lucie County	EXPANSION	0	0	0	22,000
Legacy Park Spec A & Spec B	Industrial Development	Port St. Lucie	NEW	459*	0	0	688,000
MJC Express	Transportation	Fort Pierce	NEW	25	0	0	6,000
Pursuit Boats Phase 3	Marine	St. Lucie County	EXPANSION	100	634	684	109,000
St. Lucie Commerce Center	Industrial Development	Fort Pierce	NEW	800*	0	0	1,200,000
Tenet Health	Life Sciences	Port St. Lucie	NEW	600†	0	0	181,925
				2,864	804	864	3,384,924

* Projected new jobs are derived from the US Energy Information Administration Energy Consumption Survey = median square feet per worker at 1,500 ** New facility in 2022, jobs transferred from 2029 project. Includes full-time, part-time and per diem workers

15,741 SF Industrial Building - For Sale

7397 Commercial Circle, Fort Pierce, FL 34951

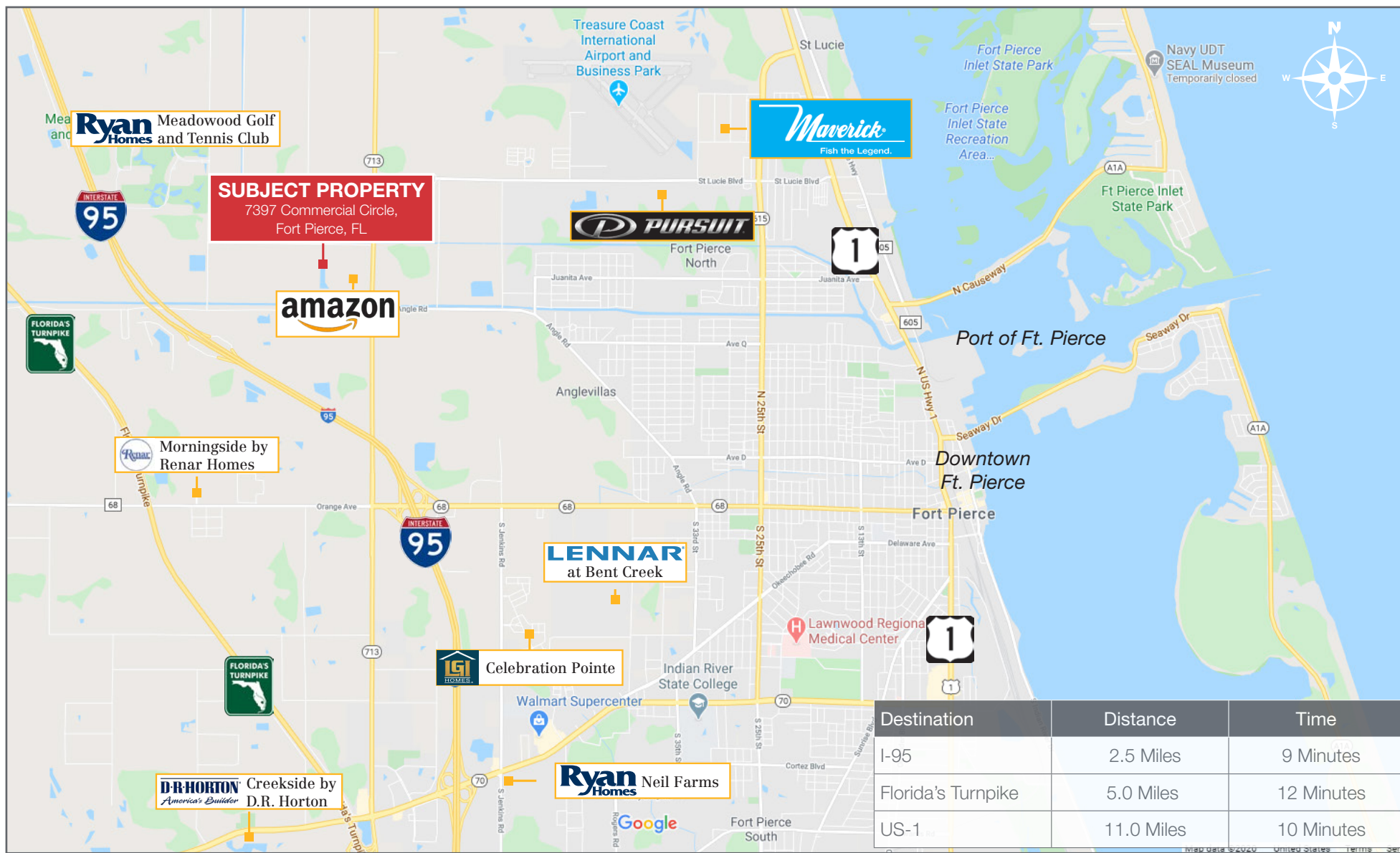
Drive Time Map



15,741 SF Industrial Building - For Sale

7397 Commercial Circle, Fort Pierce, FL 34951

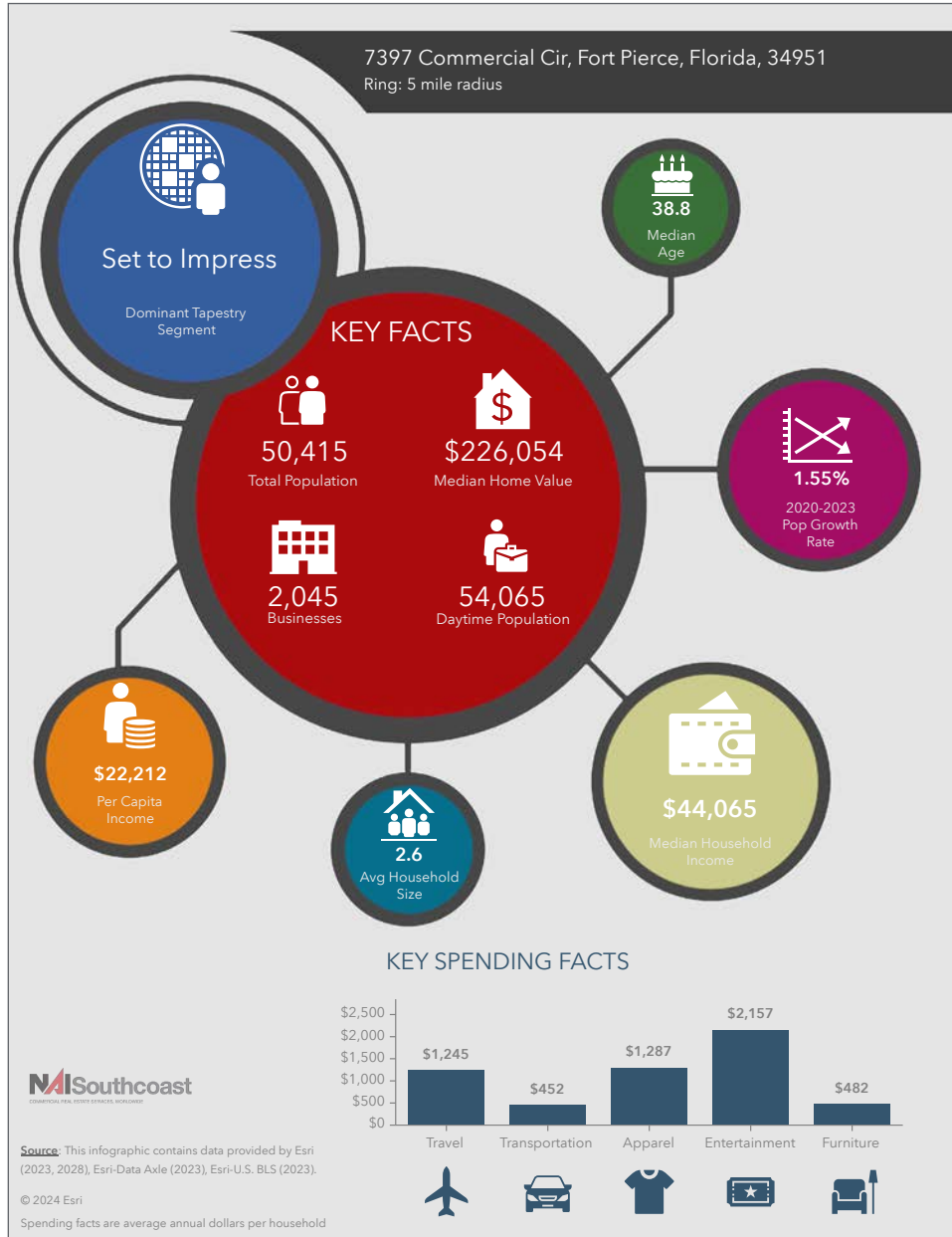
Ft. Pierce Area Map



15,741 SF Industrial Building - For Sale

7397 Commercial Circle, Fort Pierce, FL 34951

2023 Demographics



Population

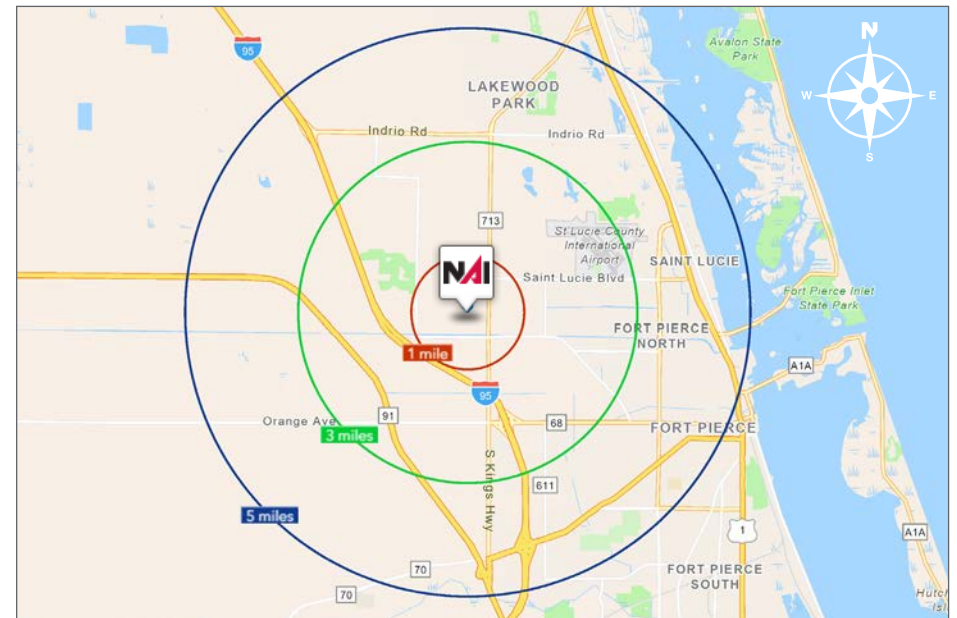
- 1 Mile: 170
- 3 Mile: 8,360
- 5 Mile: 50,415

Average Household Income

- 1 Mile: \$73,246
- 3 Mile: \$73,808
- 5 Mile: \$60,754

Median Age

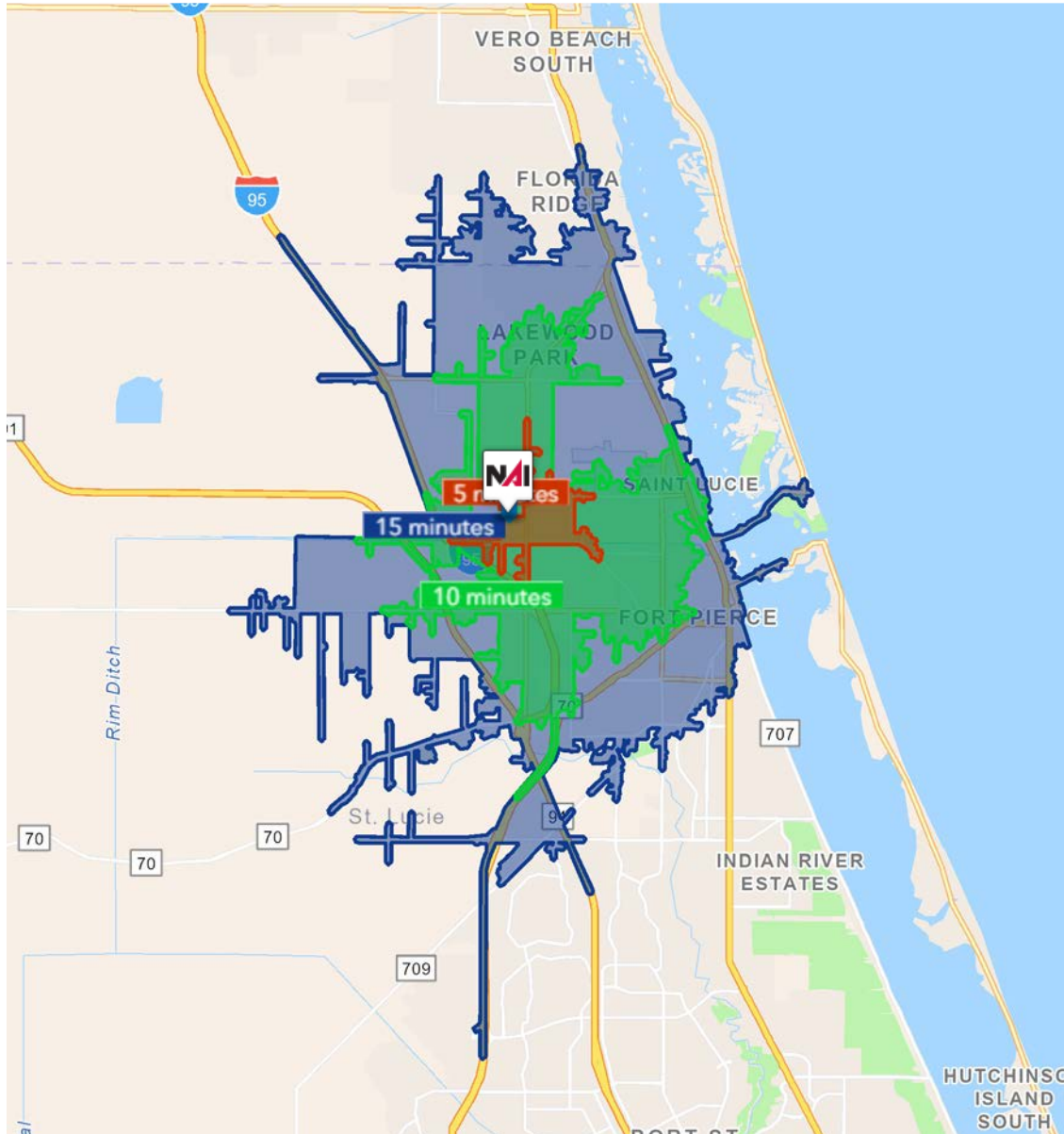
- 1 Mile: 42.7
- 3 Mile: 41.6
- 5 Mile: 38.8



15,741 SF Industrial Building - For Sale

7397 Commercial Circle, Fort Pierce, FL 34951

Drive Time

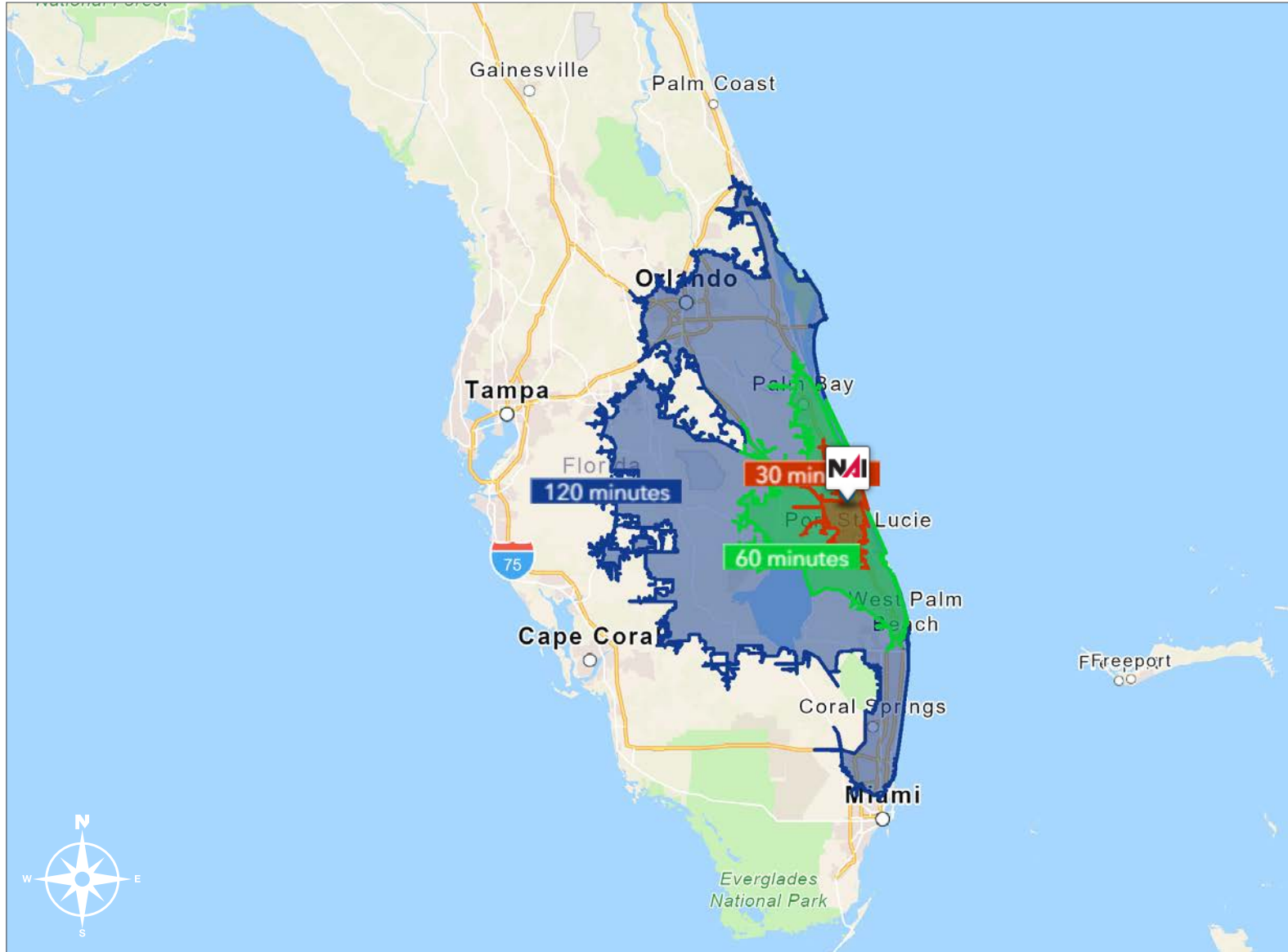


3 Minutes	5 Minutes	10 Minutes
237 2010 Population	24,749 2010 Population	63,679 2010 Population
256 2023 Population	28,081 2023 Population	74,862 2023 Population
.92% 2023-2028 (Annual) Est. Population Growth	.27% 2023-2028 (Annual) Est. Population Growth	.54% 2023-2028 (Annual) Est. Population Growth
39.9 2023 Median Age	38.3 2023 Median Age	40.4 2023 Median Age
\$79,146 Average Household Income	\$65,163 Average Household Income	\$74,235 Average Household Income
20.8% Percentage with Associates Degree or Better	23.8% Percentage with Associates Degree or Better	28.1% Percentage with Associates Degree or Better
47.5% Percentage in White Collar Profession	47.5% Percentage in White Collar Profession	50.2% Percentage in White Collar Profession

15,741 SF Industrial Building - For Sale

7397 Commercial Circle, Fort Pierce, FL 34951

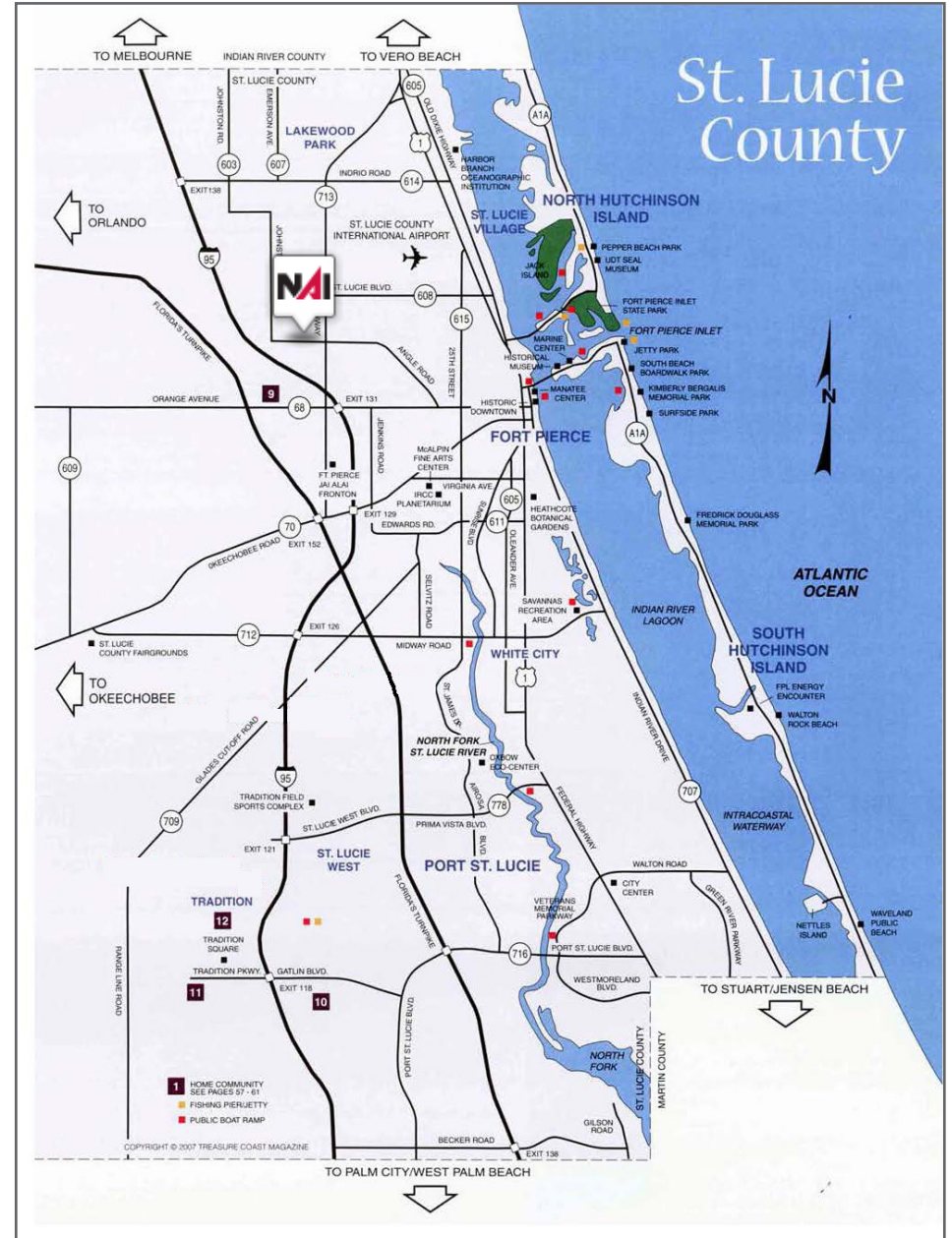
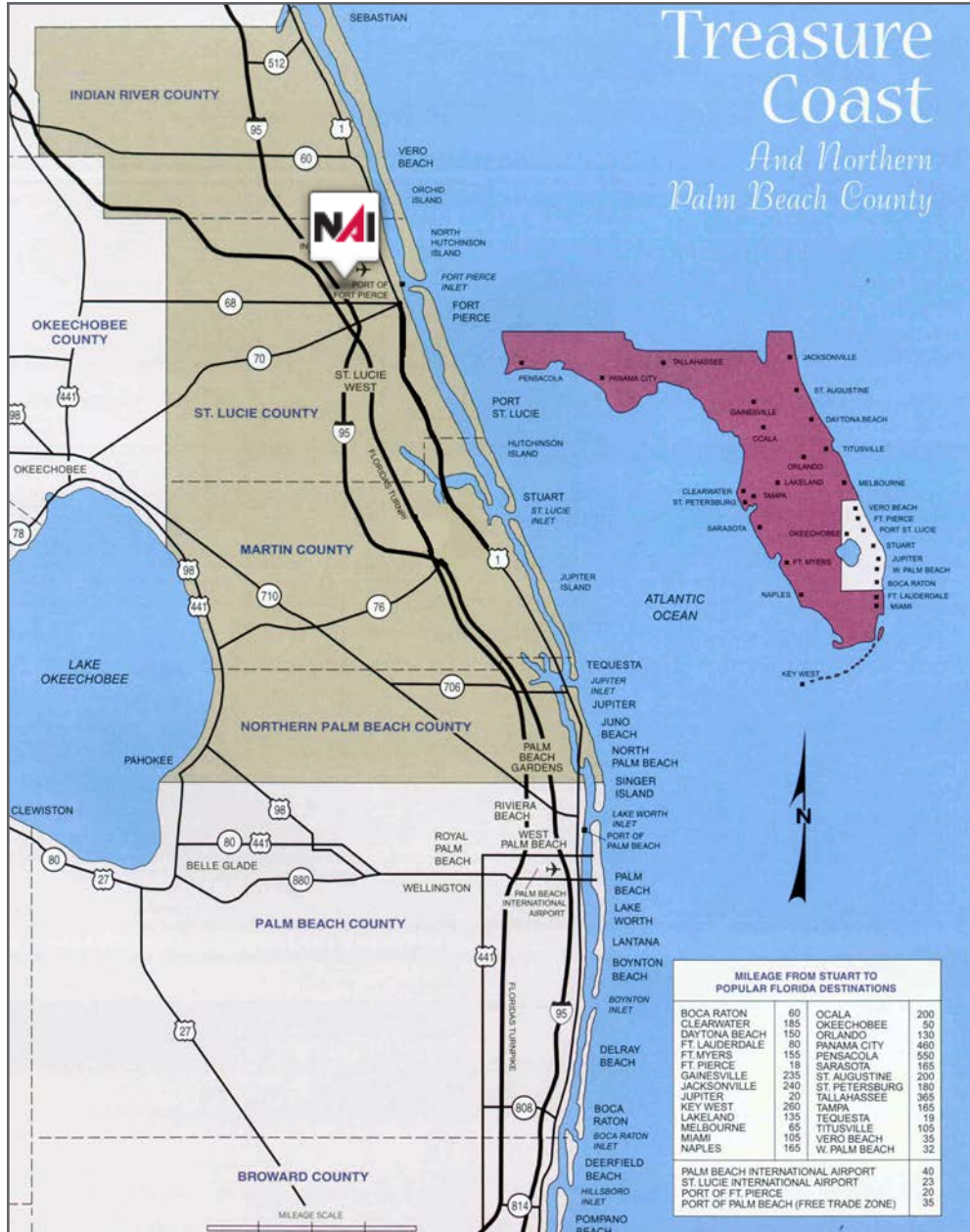
Drive Time



15,741 SF Industrial Building - For Sale

7397 Commercial Circle, Fort Pierce, FL 34951

Area Maps



City Overview

City of Ft. Pierce, Florida



Fort Pierce is famous for being a quaint fishing village, but take a closer look and you will find a treasure trove of activities. As one of the most diverse communities on the Treasure Coast, Fort Pierce has the cultural excitement to rival any “big city” atmosphere. With weekly and monthly events and premier shows at the Sunrise Theatre, visitors never run out of things to do or people to meet.

Fort Pierce is located on the pristine Indian River Lagoon with one of the best all-weather inlets in the state of Florida. Even though Fort Pierce is known for its world class fishing, some visitors would rather take an eco-friendly motorized kayak down the Indian River or dolphin watch on a tour boat. Paddle boarding and horseback riding on unspoiled beaches is also a hit among tourists. Fort Pierce’s natural beauty is world renowned.

Our cultural enhancements include the Zora Neale Hurston Trail, commemorating the noted author and anthropologist who lived her last years in Fort Pierce and the Highwaymen Heritage Trail. The Highwaymen, also referred to as the Florida Highwaymen, are 26 storied, world-renown African American landscape artists who originated in the City of Fort Pierce. Visitors from all over the United States visit Fort Pierce to experience the Highwaymen Heritage Trail, a self-guided engaging and educational experience that recognizes these mostly self-taught landscape artists who have strong local, state, national and international significance.

Museums in Fort Pierce include the newly-enlarged Florida landscape artist A.E. “Beanie” Backus museum and the St. Lucie Regional History Museum, with its satellite Adams Cobb Cultural Museum in the P.P. Cobb Building. Fort Pierce’s most popular tourist attraction, the National UDT Navy SEAL museum, commemorates the birth of the Navy frogmen here in Fort Pierce, and chronicles the evolution of this military unit to today’s Navy SEALs.

Fort Pierce City Marina is home to the Southern Kingfish Association’s National Championship Fishing Tournament every three years bringing 250-300 fishing teams to Downtown Fort Pierce. SKA has also committed to add Fort Pierce to the tournament’s Pro Tour schedule during the off years.

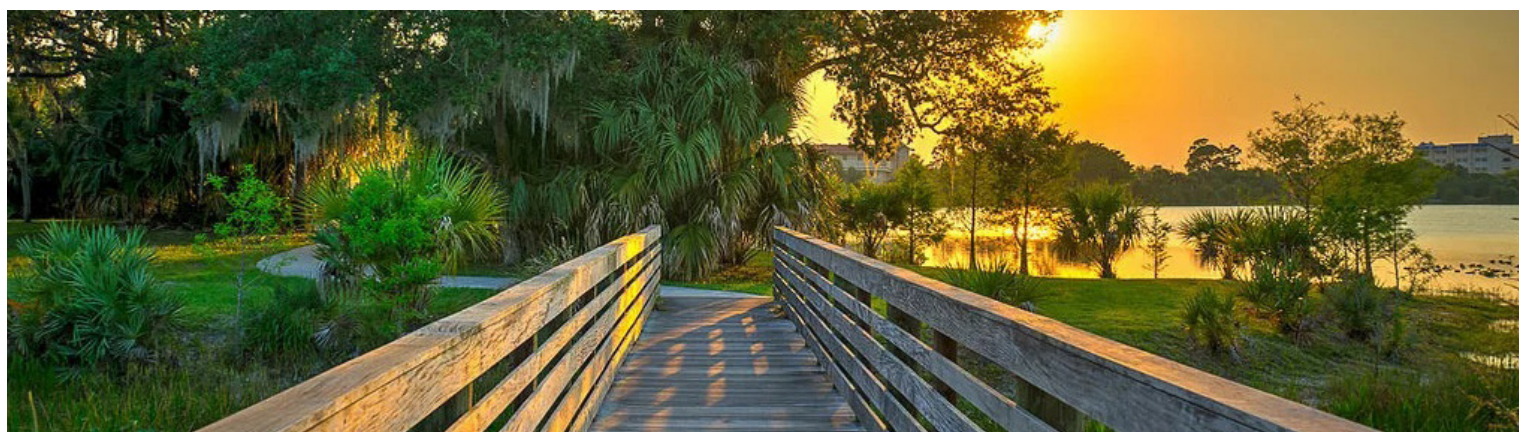
Regional Overview

St. Lucie County, FL

Extensive, dependable transportation and easy access is the key to growth, and St. Lucie County has both in abundance. Interstate Highway 95 and U.S. Highway 1 provide easy access to the country's east coast, from Key West to Maine. The Florida Turnpike stretches from just south of Miami through northern-central Florida, while State Road 70 runs from U.S. Highway 1 in Fort Pierce west to Bradenton, Florida. St. Lucie County offers a plethora of transportation linkages which include rail, a custom-serviced international airport, and a deep-water port – all of which enable easy access to all St. Lucie County has to offer. The St. Lucie County International Airport is also one of the busiest general aviation airports in the state.

The county has a population of over 328,000 and has experienced growth of over 18% since 2010. The area economy is a blend of emerging life science R&D with traditional manufacturing, agriculture, tourism and services. St. Lucie County's natural resources are enviable, with more than 21 miles of pristine coastline and beaches, coral reefs, more than 20,000 acres of public parks and nature preserves, and miles of rivers and waterways.. The area boasts over 20 public and semiprivate courses, with prices ranging from upscale to very affordable, and the great weather allows for play all year round. St. Lucie County is home to Clover Park in Port St. Lucie, the Spring training home of the New York Mets.

The county is host to Indian River State College, an institution that has won national recognition for excellence and innovation applied toward training and education. St. Lucie County boasts 39 schools with a total of 41,409 students and 5,205 staff. The Economic Development Council of St. Lucie County (EDC) is a non-profit organization with the goal of creating more, high-paying jobs for residents by working in concert on agreed upon strategies to promote the retention and expansion of existing businesses, as well as attracting new ones to St. Lucie County. Workers employed in St. Lucie County are clustered in the Health Care and Social Assistance (18.4%), and Retail Trade (11.9%) industries. Workers living in St. Lucie County are concentrated in the Health Care and Social Assistance (16.3%), and Retail Trade (14.1%) industries. Since 2017 the EDC has facilitated 40 expansion and new attraction job creating projects with a net growth of building area of approximately 6,500,000 square feet.





Nikolaus M. Schroth, CCIM

Broker Associate | Principal
+1 772 286 6292
nikschroth@naisouthcoast.com
www.naisouthcoast.com



J. Jeffery Allman, Jr.

Sales Associate
+1 772 286-6292 c +1 772 283 1555
jeff@naisouthcoast.com
www.naisouthcoast.com



James McKinney

Sales Associate
+1 772 349 3414
jamesmckinney@naisouthcoast.com
www.naisouthcoast.com

15,741 SF Industrial Building - For Sale

7397 Commercial Circle, Fort Pierce, FL 34951



FOR SALE:
\$2,995,000