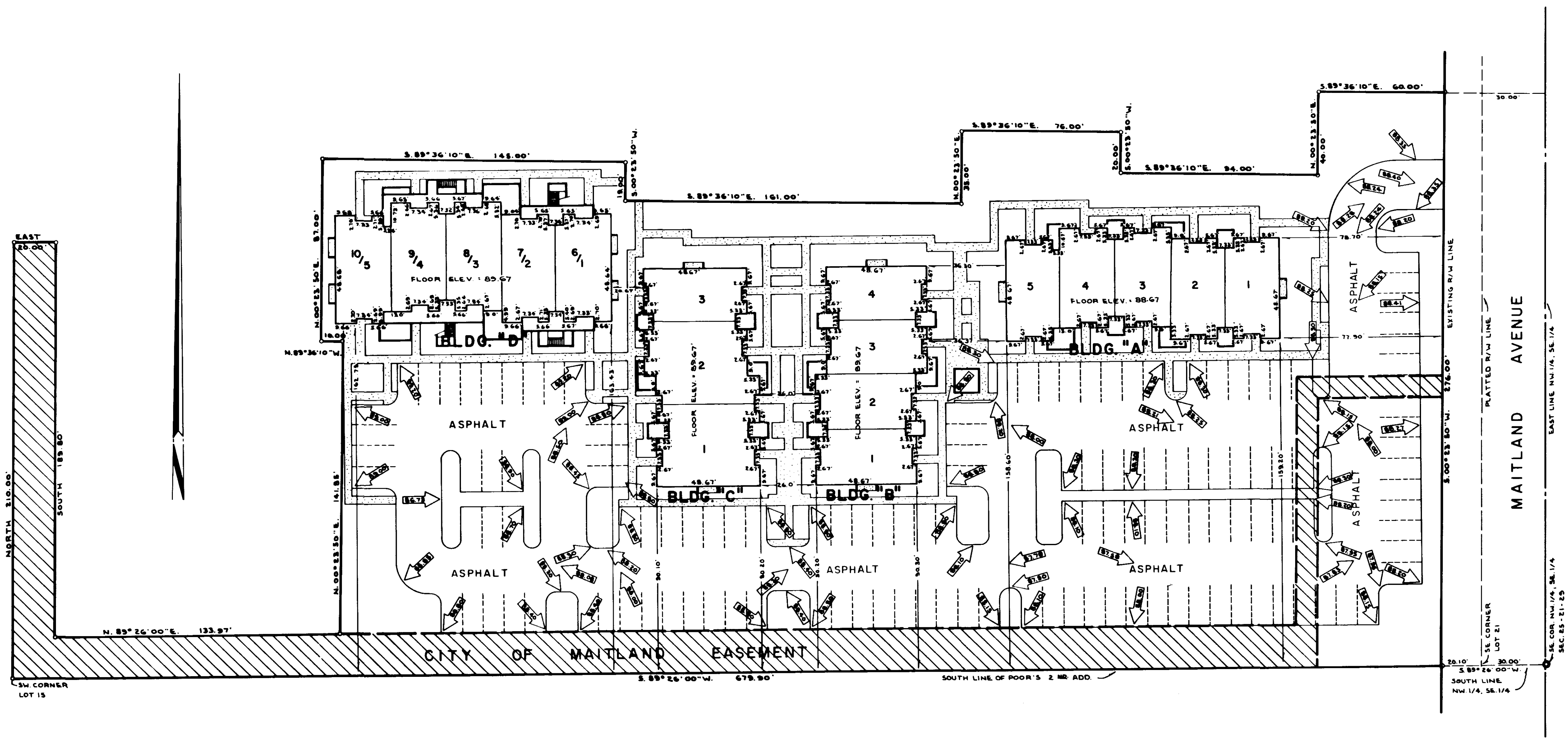


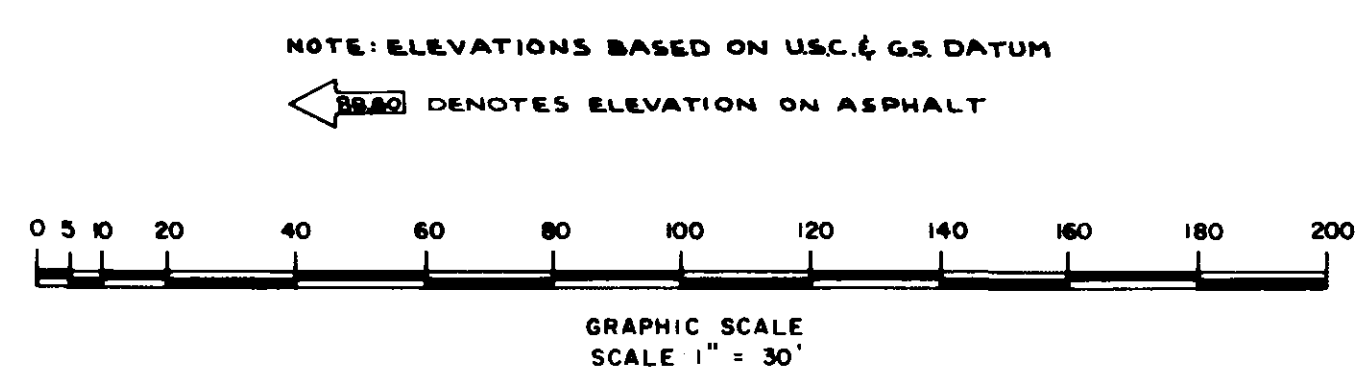
MAITLAND SQUARE

A CONDOMINIUM

DESCRIPTION:
FROM THE SE. COR. OF THE NW 1/4, OF THE SE. 1/4, OF SECTION 25, TOWNSHIP 21 SOUTH, RANGE 29 EAST, RUN S. 89° 26' 00" W. 30.00 FEET, ALONG THE SOUTH BOUNDARY OF SAID NW 1/4, OF THE SE. 1/4, TO THE SE. COR. OF LOT 21, POOR'S 2ND. ADDITION TO MAITLAND, AS RECORDED IN PLAT BOOK "F", PAGE 28, PUBLIC RECORDS OF ORANGE COUNTY, FLORIDA; THENCE CONTINUE S. 89° 26' 00" W. 20.10 FEET ALONG THE SOUTH BOUNDARY OF SAID POOR'S 2ND. ADDITION FOR THE POINT OF BEGINNING; THENCE CONTINUE S. 89° 26' 00" W. 679.90 FEET TO THE SW. COR. OF LOT 15, OF SAID POOR'S 2ND. ADDITION; THENCE NORTH 210.00 FEET; THENCE EAST 80.00 FEET; THENCE SOUTH 189.80 FEET; THENCE N. 89° 26' 00" E. 133.97 FEET; THENCE N. 00° 23' 50" E. 141.85 FEET; THENCE N. 89° 36' 10" W. 10.00 FEET; THENCE N. 00° 23' 50" E. 87.00 FEET; THENCE S. 89° 36' 10" E. 145.00 FEET; THENCE S. 00° 23' 50" W. 19.00 FEET; THENCE S. 89° 36' 10" E. 161.00 FEET; THENCE N. 00° 23' 50" E. 35.00 FEET; THENCE S. 89° 36' 10" E. 76.00 FEET; THENCE S. 00° 23' 50" W. 20.00 FEET; THENCE S. 89° 36' 10" E. 94.00 FEET; THENCE N. 00° 23' 50" E. 40.00 FEET; THENCE S. 89° 36' 10" E. 60.00 FEET; THENCE S. 00° 23' 50" W. 276.00 FEET TO THE POINT OF BEGINNING. CONTAINING 3.1279 ACRES MORE OR LESS, SUBJECT TO RESTRICTIONS AND EASEMENTS OF RECORD.



HENRICH, INC.
SURVEYING AND MAPPING
590 WYMORE ROAD
WINTER PARK, FLORIDA 32789
305-647-7346



THE UNDERSIGNED BEING A LICENSED AND REGISTERED LAND SURVEYOR OF HENRICH, INCORPORATED, DOES HEREBY CERTIFY THAT A SURVEY WAS MADE OF THE LANDS SHOWN HEREON AND FURTHER DOES CERTIFY THAT THE SURVEY AND SITE PLAN DESIGNATED AS EXHIBIT A, RECORDED IN CONDOMINIUM EXHIBIT BOOK 2, PAGE 123, PUBLIC RECORDS OF ORANGE COUNTY, FLORIDA, TOGETHER WITH THIS REVISED EXHIBIT A AND TOGETHER WITH EXHIBIT B, SHEETS 1 AND 2, AND REVISED SHEET 1 OF EXHIBIT B, DESIGNATED AS EXHIBIT B FLOOR PLAN, REVISED SHEET 1 OF 2 SHEETS, RECORDED IN CONDOMINIUM EXHIBIT BOOKS 2 AND 3, PAGES 124 AND 125, AND 9 AND 10, BOTH PUBLIC RECORDS OF ORANGE COUNTY, FLORIDA, TOGETHER WITH THE DECLARATION OF CONDOMINIUM AND AMENDMENT THERETO AS RECORDED IN OFFICIAL RECORDS BOOK 2446, PAGE 1504, AND OFFICIAL RECORDS BOOK 2504, PAGES 650-657, RESPECTIVELY, PUBLIC RECORDS OF ORANGE COUNTY, FLORIDA, ARE CORRECT REPRESENTATIONS OF THE IMPROVEMENTS DESCRIBED, AND THAT IT CAN BE DETERMINED THEREFROM THE IDENTIFICATION, LOCATIONS, DIMENSIONS AND SIZES OF THE COMMON ELEMENTS AND OF EACH UNIT CONTAINED THEREIN.

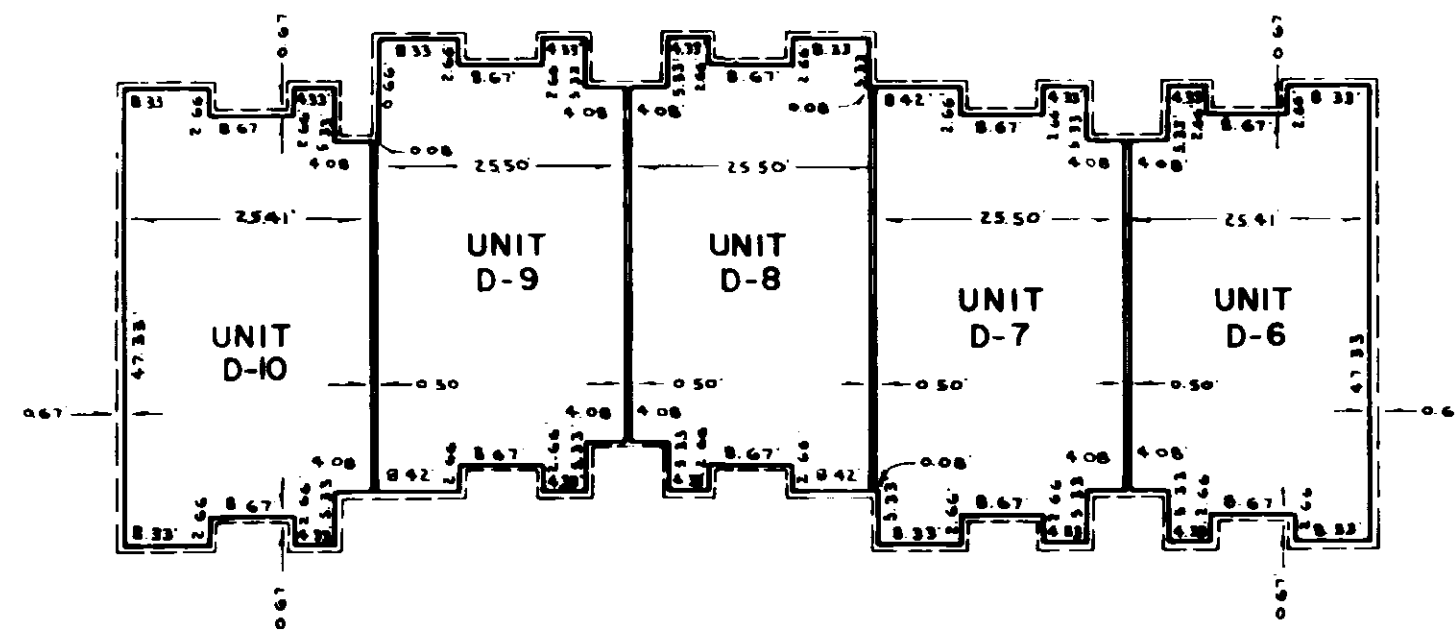
REG. LAND SURVEYOR NO. 1225
DATE 2/4/74

REVISOR'S CERTIFICATE FOR REVISED EXHIBIT "A"

REVISED EXHIBIT "A" SURVEY AND SITE PLAN
SHEET 1, OF 1 SHEET

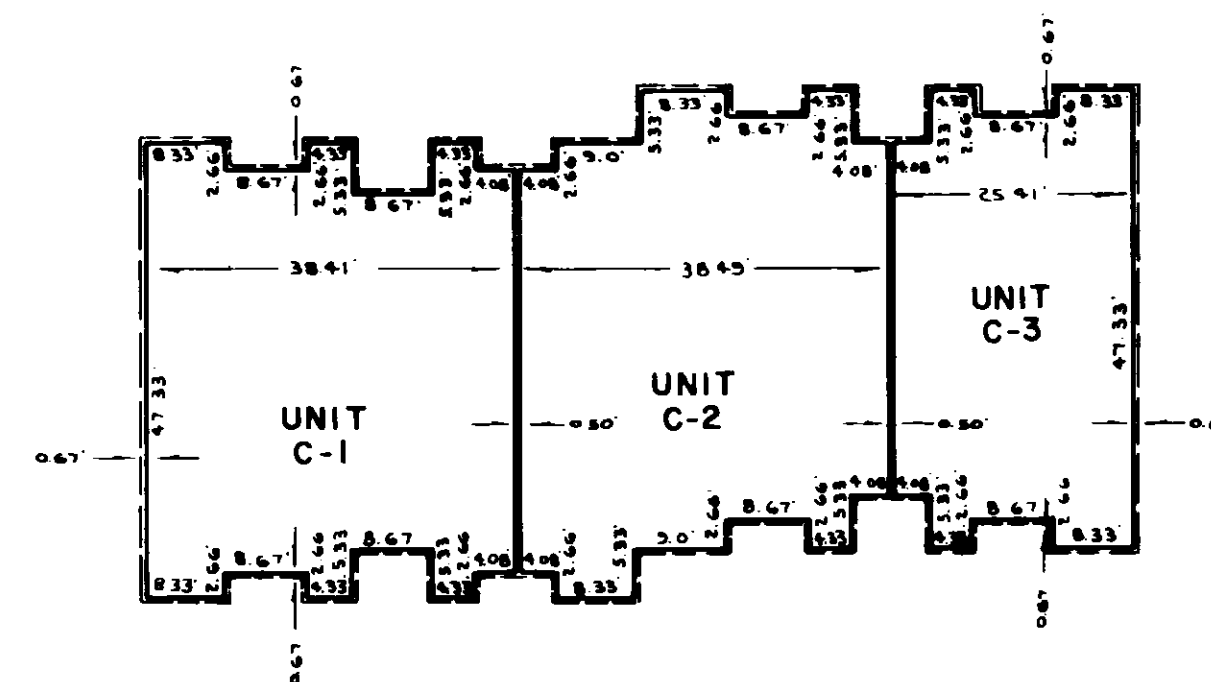
MAITLAND SQUARE

A CONDOMINIUM



SECOND FLOOR PLAN BUILDING "D"

LOWER BOUNDARY ELEV. = 100.75
UPPER BOUNDARY ELEV. = 110.17

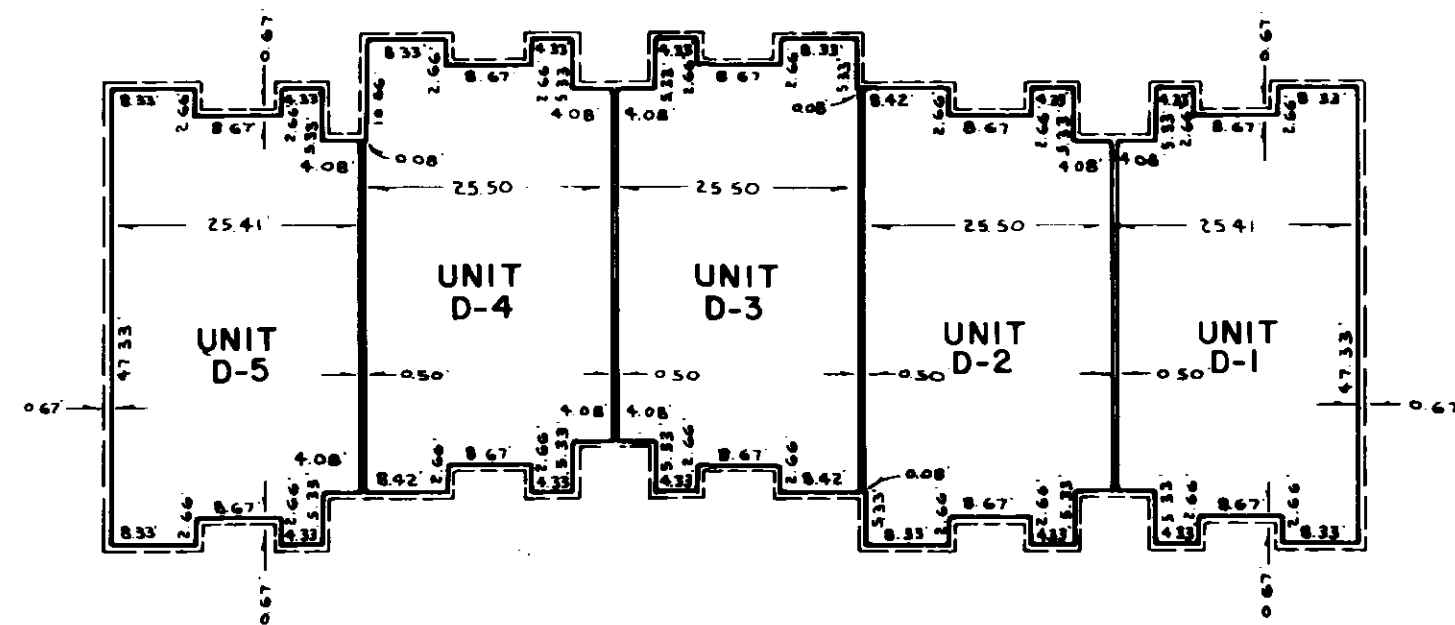


FLOOR PLAN BUILDING "C"

UNIT C-1 LOWER BOUNDARY ELEV. = 89.67
UPPER BOUNDARY ELEV. = 99.50

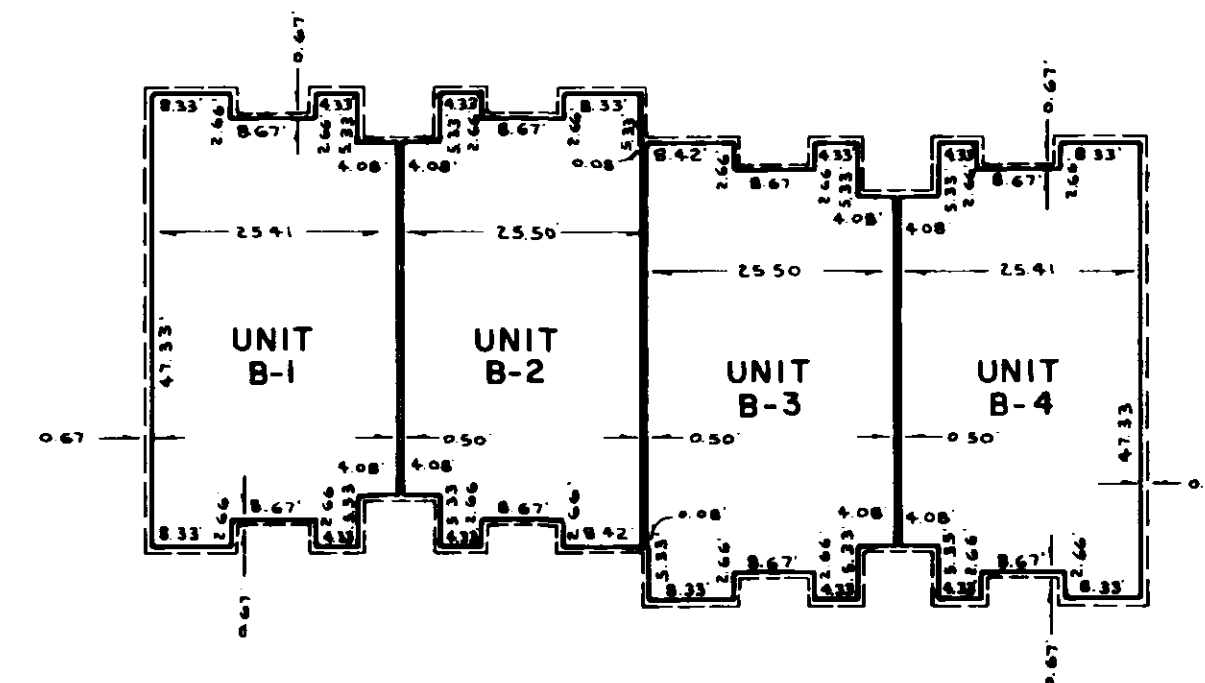
UNIT C-2 LOWER BOUNDARY ELEV. = 89.67
UPPER BOUNDARY ELEV. = 99.50

UNIT C-3 LOWER BOUNDARY ELEV. = 89.67
UPPER BOUNDARY ELEV. = 99.71



FIRST FLOOR PLAN BUILDING "D"

LOWER BOUNDARY ELEV. = 89.67
UPPER BOUNDARY ELEV. = 99.55



FLOOR PLAN BUILDING "B"

LOWER BOUNDARY ELEV. = 89.67
UPPER BOUNDARY ELEV. = 99.71

===== SURVEYOR'S CERTIFICATE FOR EXHIBIT B, REVISED SHEET 1 =====

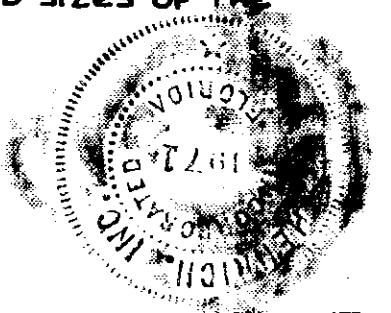
THE UNDERSIGNED BEING A LICENSED AND REGISTERED LAND SURVEYOR OF HENRICH, INCORPORATED, DOES HEREBY CERTIFY THAT A SURVEY WAS MADE OF THE LANDS SHOWN HEREON AND FURTHER DOES CERTIFY THAT THIS REVISED SHEET 1 OF EXHIBIT "B", DESIGNATED AS EXHIBIT B FLOOR PLAN REVISED SHEET 1, OF 2 SHEETS, TOGETHER WITH THE FLOOR PLAN, SHEETS 1 AND 2, DESIGNATED AS EXHIBIT "B" AND RECORDED IN CONDOMINIUM EXHIBIT BOOK 2, PAGES 124 AND 125, PUBLIC RECORDS OF ORANGE COUNTY, FLORIDA, TOGETHER WITH EXHIBIT A AND REVISED EXHIBIT A RECORDED IN CONDOMINIUM EXHIBIT BOOKS 2 AND 3, PAGES 123 AND 7 and 10, RESPECTIVELY, PUBLIC RECORDS OF ORANGE COUNTY, FLORIDA, AND TOGETHER WITH THE DECLARATION OF CONDOMINIUM AND AMENDMENT THERETO AS RECORDED IN OFFICIAL RECORDS BOOK 2446, PAGE 1504, AND OFFICIAL RECORDS BOOK 2504, PAGE 62-67, RESPECTIVELY, PUBLIC RECORDS OF ORANGE COUNTY, FLORIDA, ARE CORRECT REPRESENTATIONS OF THE IMPROVEMENTS DESCRIBED, AND THAT IT CAN BE DETERMINED THEREFROM THE IDENTIFICATION, LOCATIONS, DIMENSIONS AND SIZES OF THE COMMON ELEMENTS AND OF EACH UNIT CONTAINED THEREIN.

L. F. Henrich
REG. LAND SURVEYOR NO. 1263

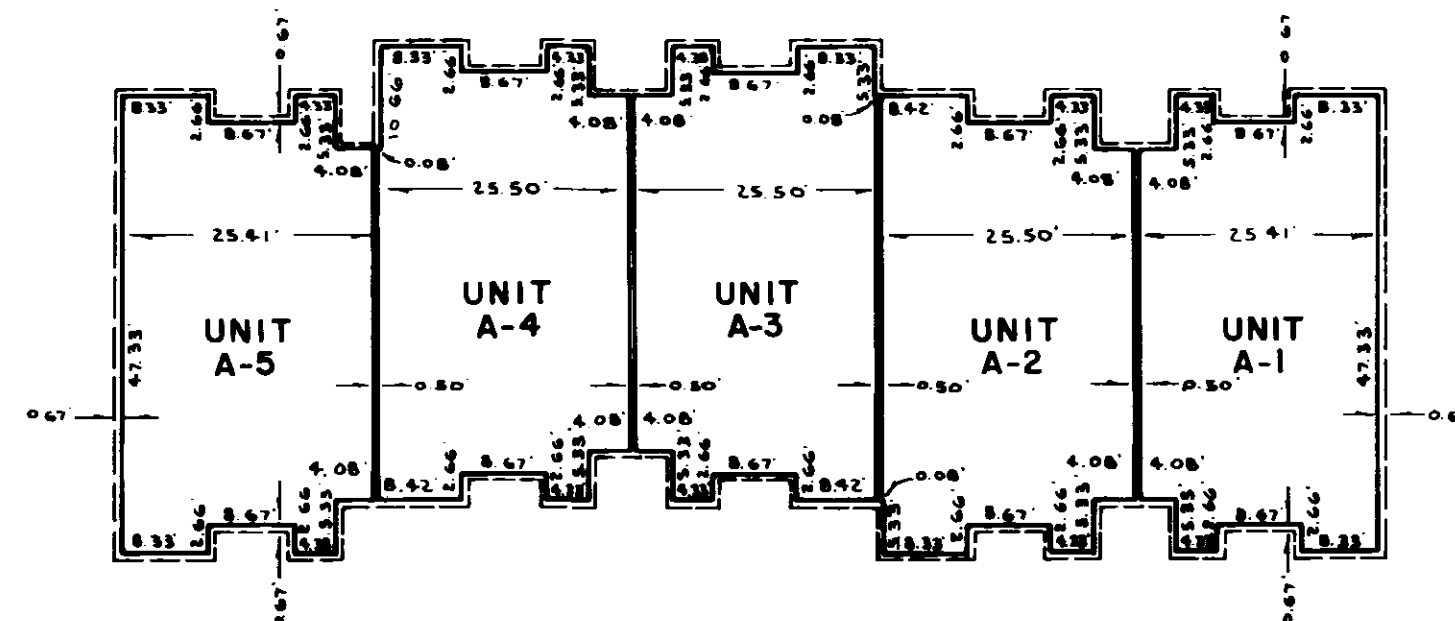
2/4/74
DATE



GRAPHIC SCALE
SCALE: 1" = 20'



HENRICH, INC.
SURVEYING AND MAPPING
590 WYMORE ROAD
WINTER PARK, FLORIDA 32789
305-647-7346



FLOOR PLAN BUILDING "A"

LOWER BOUNDARY ELEV. = 89.67
UPPER BOUNDARY ELEV. = 99.50

EXHIBIT "B" FLOOR PLAN
REVISED SHEET 1, OF 2 SHEETS