

I-4 BELTWAY LOGISTICS

A FOUR BUILDING 547,753 SF DISTRIBUTION DEVELOPMENT

3205 St. Johns Parkway | Sanford | Florida 32771



**TAKE A
VIRTUAL
TOUR
HERE**



OWNED BY:

LEASING CONTACTS:



Bo Bradford, CCIM, SIOR
President/Principal
321.281.8502
bbradford@lee-associates.com

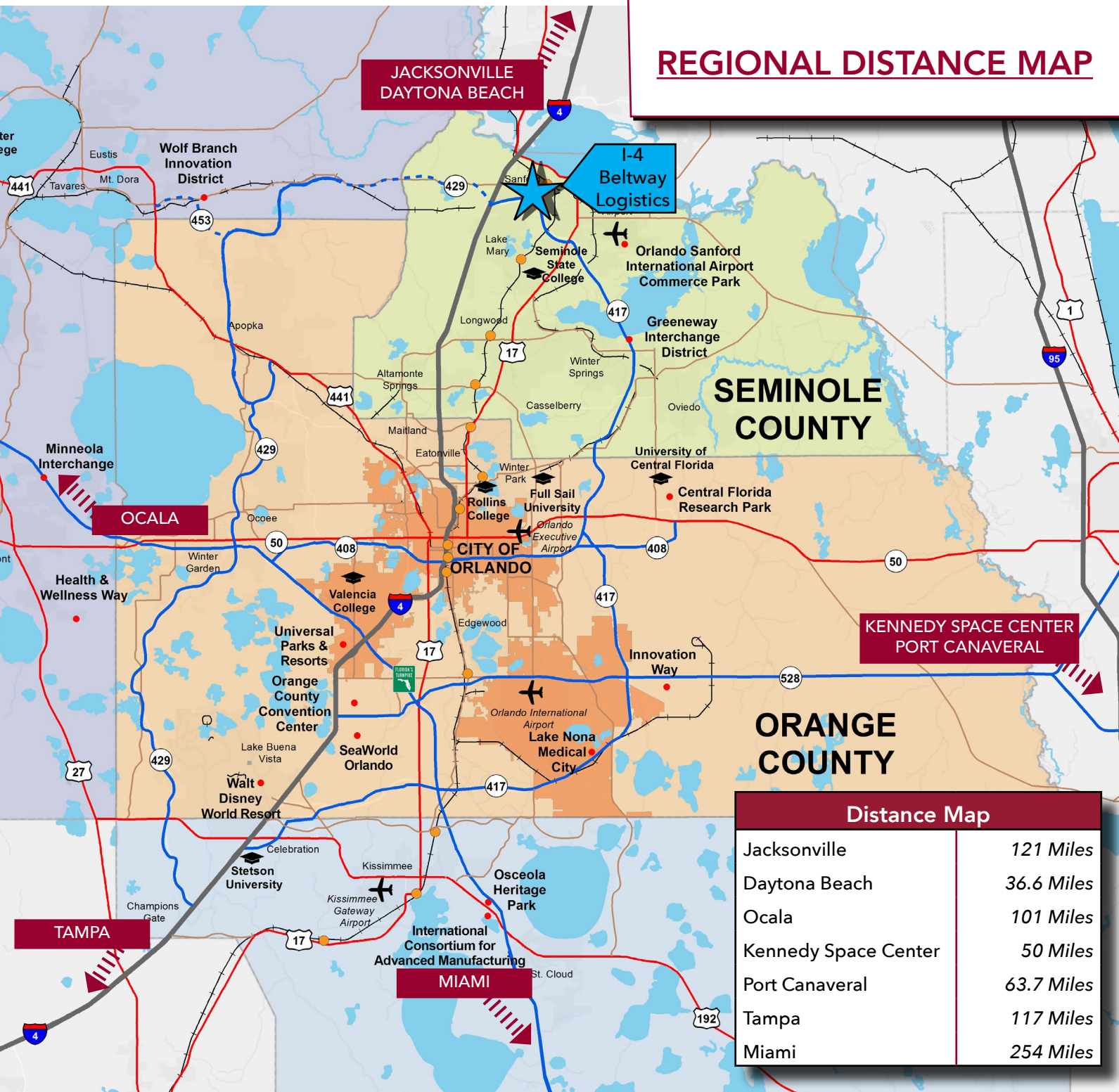
Tim Perry, CCIM, SIOR
Senior Vice President/Principal
321.281.8515
tperry@lee-associates.com

We obtained the information above from sources we believe to be reliable. However, we have not verified its accuracy and make no guarantee, warranty or representation about it. It is submitted subject to the possibility of errors, omissions change of price, rental or other conditions, prior sale, lease or financing, or withdrawal without notice. We include projections, opinions, assumptions, or estimates for example only, and they may not represent current or future performance of the property. You and your tax and legal advisors should conduct your own investigation of the property and transaction.

I-4 BELTWAY LOGISTICS

3205 St. Johns Parkway | Sanford | Florida 32771

REGIONAL DISTANCE MAP



We obtained the information above from sources we believe to be reliable. However, we have not verified its accuracy and make no guarantee, warranty or representation about it. It is submitted subject to the possibility of errors, omissions change of price, rental or other conditions, prior sale, lease or financing, or withdrawal without notice. We include projections, opinions, assumptions, or estimates for example only, and they may not represent current or future performance of the property. You and your tax and legal advisors should conduct your own investigation of the property and transaction.

I-4 BELTWAY LOGISTICS

3205 St. Johns Parkway | Sanford | Florida 32771



LOCATION FEATURES

- Class A warehouse/logistics center; 4 buildings totaling 547,753 SF on 41 acres
- Spaces available from 28,000 SF to 168,252 SF
- Zoning: RI-1, City of Sanford

UTILITIES

- Water: City of Sanford
- Sewer: City of Sanford
- Power: Duke Energy
- Phone: Spectrum and Frontier Communications

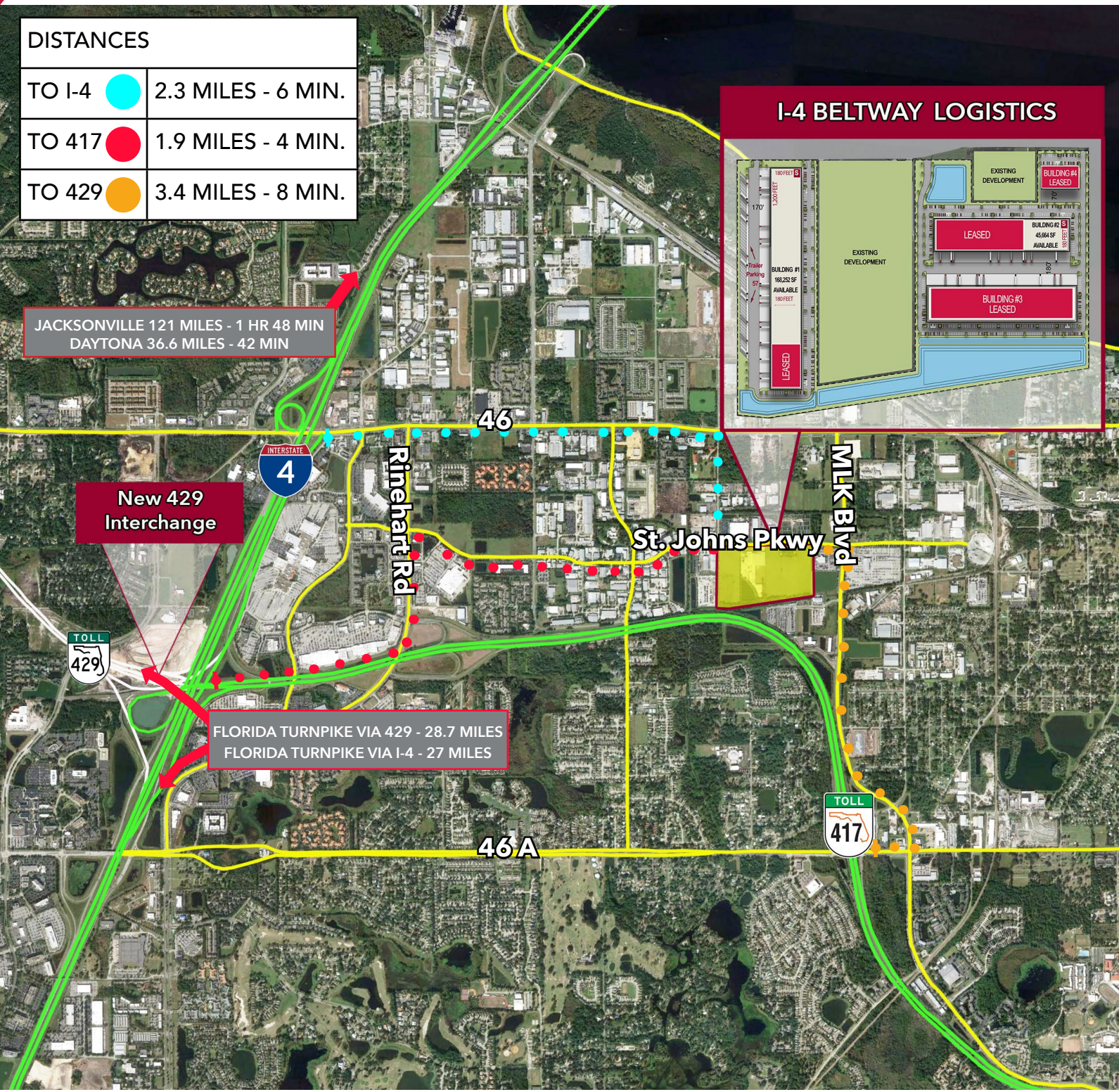
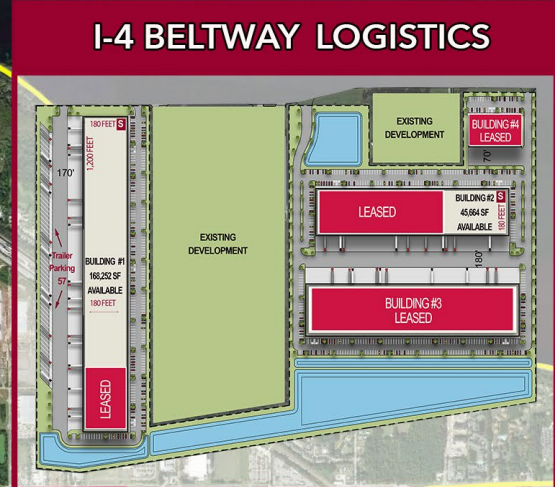
We obtained the information above from sources we believe to be reliable. However, we have not verified its accuracy and make no guarantee, warranty or representation about it. It is submitted subject to the possibility of errors, omissions change of price, rental or other conditions, prior sale, lease or financing, or withdrawal without notice. We include projections, opinions, assumptions, or estimates for example only, and they may not represent current or future performance of the property. You and your tax and legal advisors should conduct your own investigation of the property and transaction.

I-4 BELTWAY LOGISTICS

3205 St. Johns Parkway | Sanford | Florida 32771

DISTANCES	
TO I-4	2.3 MILES - 6 MIN.
TO 417	1.9 MILES - 4 MIN.
TO 429	3.4 MILES - 8 MIN.

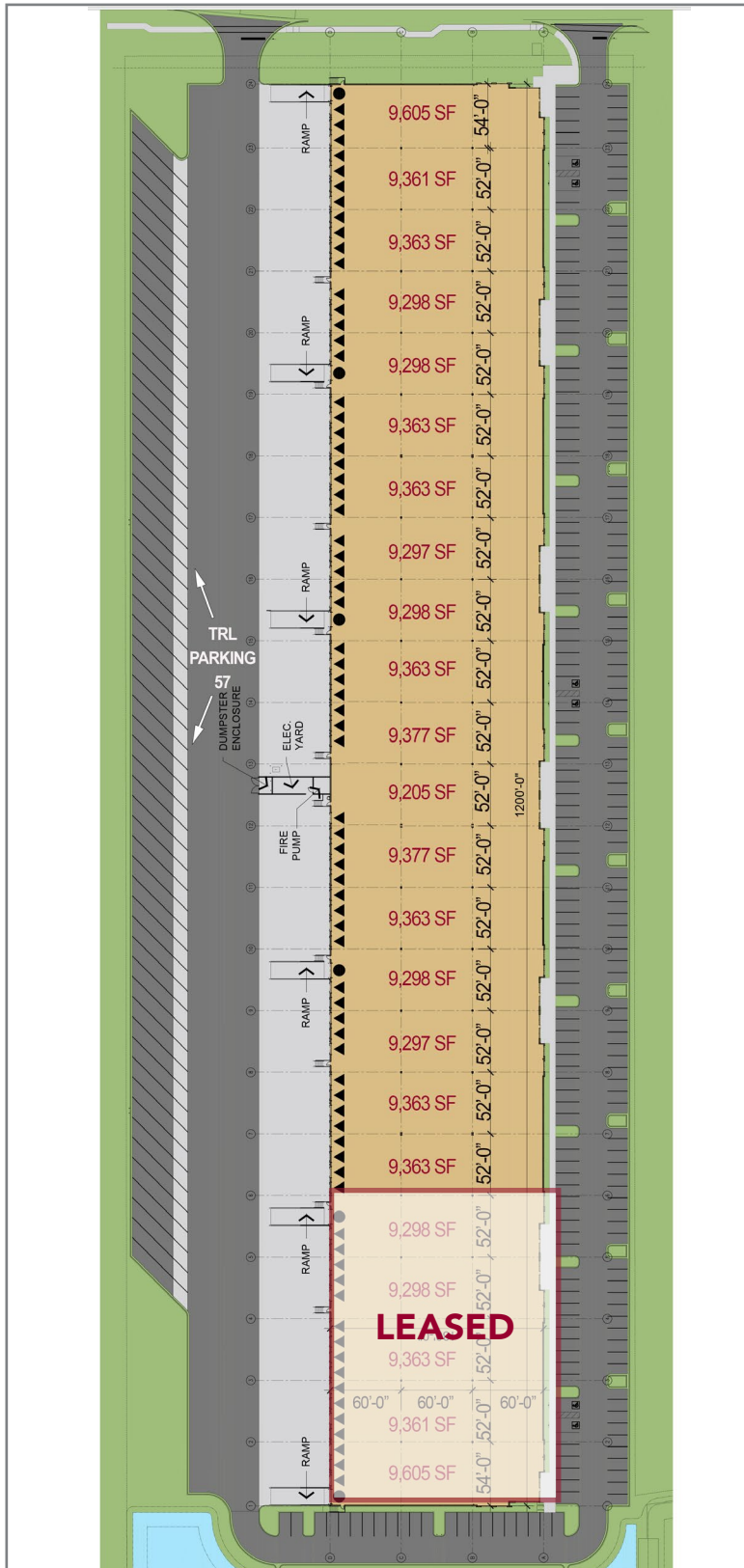
JACKSONVILLE 121 MILES - 1 HR 48 MIN
DAYTONA 36.6 MILES - 42 MIN



We obtained the information above from sources we believe to be reliable. However, we have not verified its accuracy and make no guarantee, warranty or representation about it. It is submitted subject to the possibility of errors, omissions change of price, rental or other conditions, prior sale, lease or financing, or withdrawal without notice. We include projections, opinions, assumptions, or estimates for example only, and they may not represent current or future performance of the property. You and your tax and legal advisors should conduct your own investigation of the property and transaction.

I-4 BELTWAY LOGISTICS

3503 St. Johns Parkway | Sanford | Florida 32771



BUILDING 1

BUILDING SIZE:
215,177 SF

LOADING:
Rear Load

BUILDING DEPTH:
180'

CLEAR HEIGHT:
32' to bottom of structure

SPRINKLER SYSTEM:
ESFR

TRUCK COURT:
170' deep average

CAR PARKING SPACES:
239 Car Spaces

OVERFLOW TRAILER PARKING:
57

POWER:
2,400 Amps 480V/277V 3 Phase

COLUMN SPACING:
52' X 60'

SPEED BAY SPACING:
52' X 60'

DOCK DOORS:
74 - 9' x 10'

RAMPED DOORS:
6 - 12' X 14'

WAREHOUSE LIGHTING:
LED

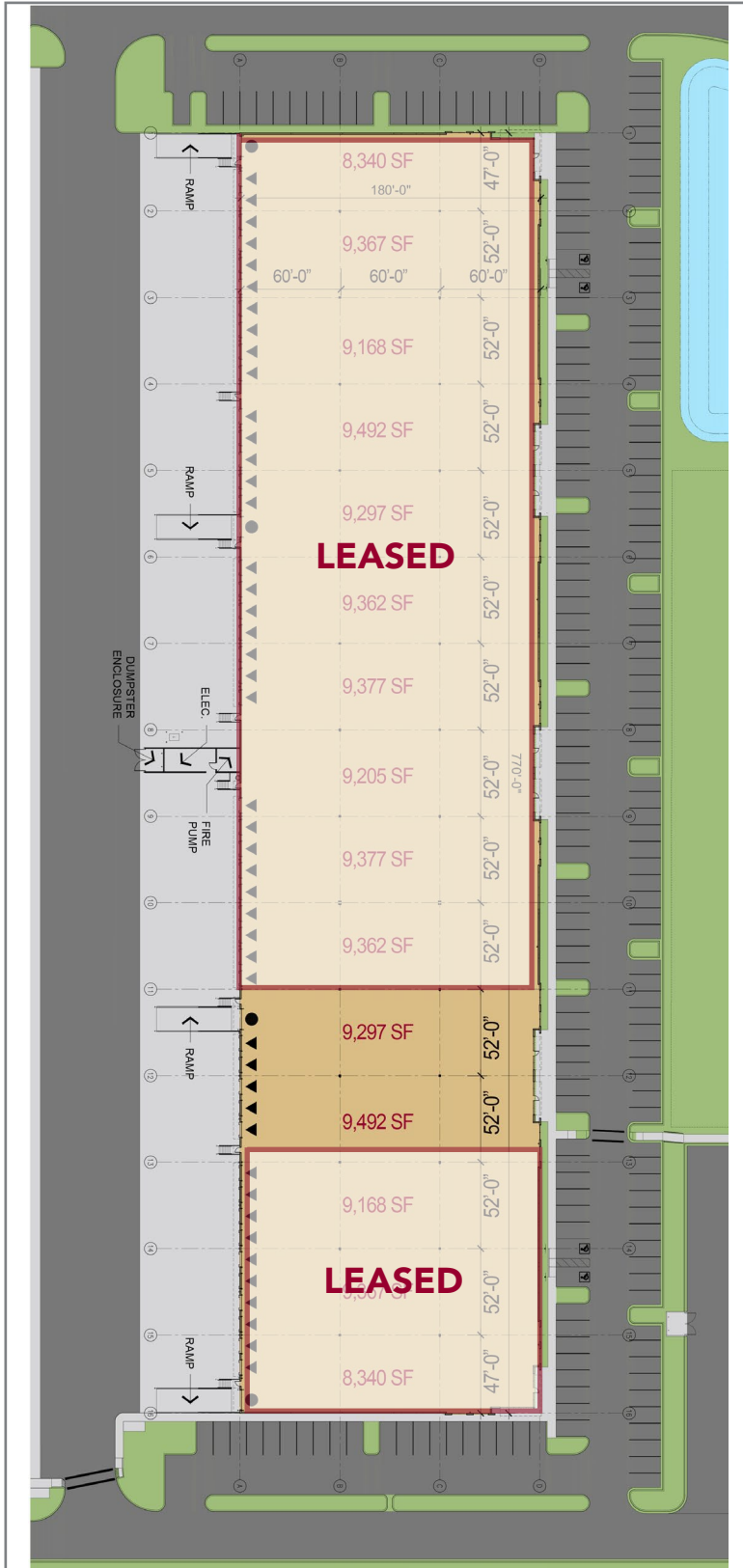
CONCRETE SLAB:
7" - 4000 PSI

ROOF:
60 mil PVC membrane

We obtained the information above from sources we believe to be reliable. However, we have not verified its accuracy and make no guarantee, warranty or representation about it. It is submitted subject to the possibility of errors, omissions change of price, rental or other conditions, prior sale, lease or financing, or withdrawal without notice. We include projections, opinions, assumptions, or estimates for example only, and they may not represent current or future performance of the property. You and your tax and legal advisors should conduct your own investigation of the property and transaction.

I-4 BELTWAY LOGISTICS

3221 Butters Way | Sanford | Florida 32771



BUILDING 2

BUILDING SIZE:
138,011 SF

LOADING:
Rear Load

BUILDING DEPTH:
180'

CLEAR HEIGHT:
32' to bottom of structure

SPRINKLER SYSTEM:
ESFR

TRUCK COURT:
180' deep shared court

CAR PARKING SPACES:
189 Car Spaces

OVERFLOW TRAILER PARKING:
N/A

POWER:
2,400 Amps 480V/277V 3 Phase

COLUMN SPACING:
52' X 60'

SPEED BAY SPACING:
52' X 60'

DOCK DOORS:
46 - 9' x 10'

RAMPED DOORS:
4 - 12' X 14'

WAREHOUSE LIGHTING:
LED

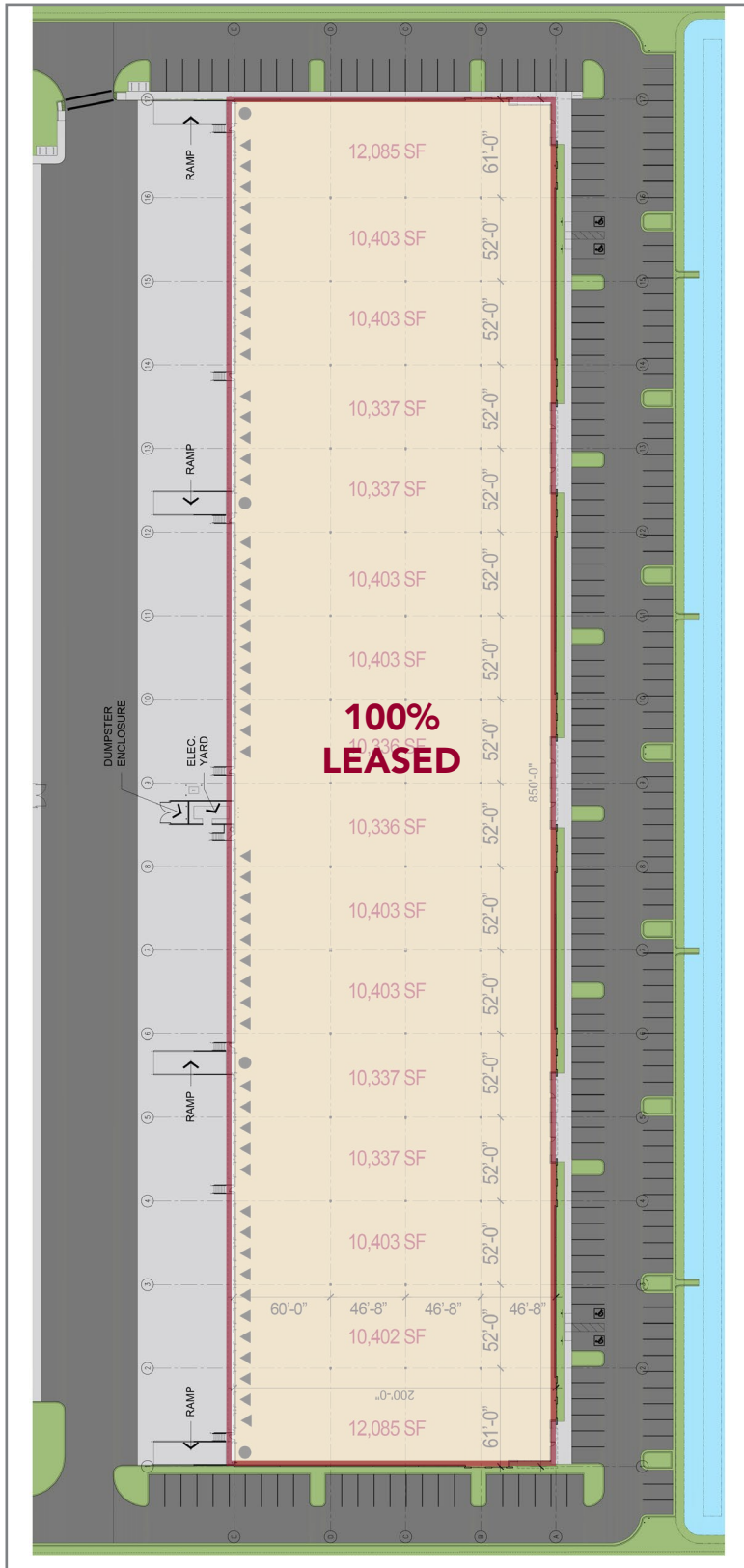
CONCRETE SLAB:
7" - 4000 PSI

ROOF:
60 mil PVC membrane

We obtained the information above from sources we believe to be reliable. However, we have not verified its accuracy and make no guarantee, warranty or representation about it. It is submitted subject to the possibility of errors, omissions change of price, rental or other conditions, prior sale, lease or financing, or withdrawal without notice. We include projections, opinions, assumptions, or estimates for example only, and they may not represent current or future performance of the property. You and your tax and legal advisors should conduct your own investigation of the property and transaction.

I-4 BELTWAY LOGISTICS

3224 McCraney Loop | Sanford | Florida 32771



BUILDING 3

BUILDING SIZE:
169,413 SF

LOADING:
Rear Load

BUILDING DEPTH:
200'

CLEAR HEIGHT:
32' to bottom of structure

SPRINKLER SYSTEM:
ESFR

TRUCK COURT:
180' deep shared court

CAR PARKING SPACES:
207 Car Spaces

OVERFLOW TRAILER PARKING:
N/A

POWER:
2,400 Amps 480V/277V 3 Phase

COLUMN SPACING:
52' X 46'-8"

SPEED BAY SPACING:
52' X 60'

DOCK DOORS:
52 - 9' x 10'

RAMPED DOORS:
4 - 12' X 14'

WAREHOUSE LIGHTING:
LED

CONCRETE SLAB:
7" - 4000 PSI

ROOF:
60 mil PVC membrane

We obtained the information above from sources we believe to be reliable. However, we have not verified its accuracy and make no guarantee, warranty or representation about it. It is submitted subject to the possibility of errors, omissions change of price, rental or other conditions, prior sale, lease or financing, or withdrawal without notice. We include projections, opinions, assumptions, or estimates for example only, and they may not represent current or future performance of the property. You and your tax and legal advisors should conduct your own investigation of the property and transaction.

I-4 BELTWAY LOGISTICS

3205 St. Johns Parkway | Sanford | Florida 32771



BUILDING 4

BUILDING SIZE:

25,152 SF

LOADING:

Rear Load, Grade Level

BUILDING DEPTH:

120'

CLEAR HEIGHT:

24' to bottom of structure

SPRINKLER SYSTEM:

Class IV System allows storage at 20'

TRUCK COURT:

70' deep

CAR PARKING SPACES:

39 Car Spaces

POWER:

480V/277V 3 Phase

COLUMN SPACING:

42' X 60'

GRADE DOORS:

10 - 12' x 14'

WAREHOUSE LIGHTING:

LED

ROOF:

60 mil PVC membrane

OWNED BY:



LEASING CONTACTS:

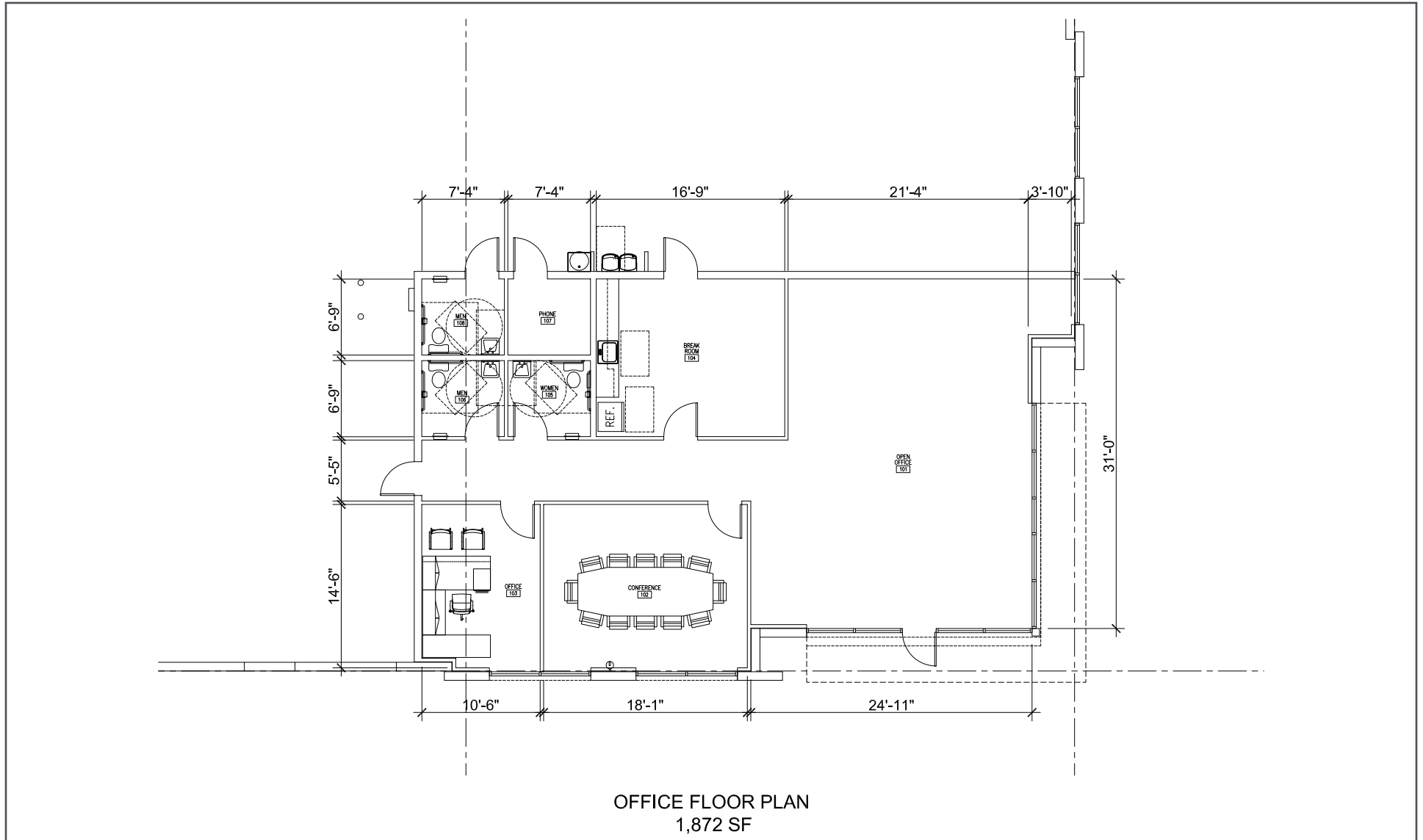


Bo Bradford, CCIM, SIOR
President/Principal
321.281.8502
bbradford@lee-associates.com

Tim Perry, CCIM, SIOR
Senior Vice President/Principal
321.281.8515
tperry@lee-associates.com

I-4 BELTWAY LOGISTICS

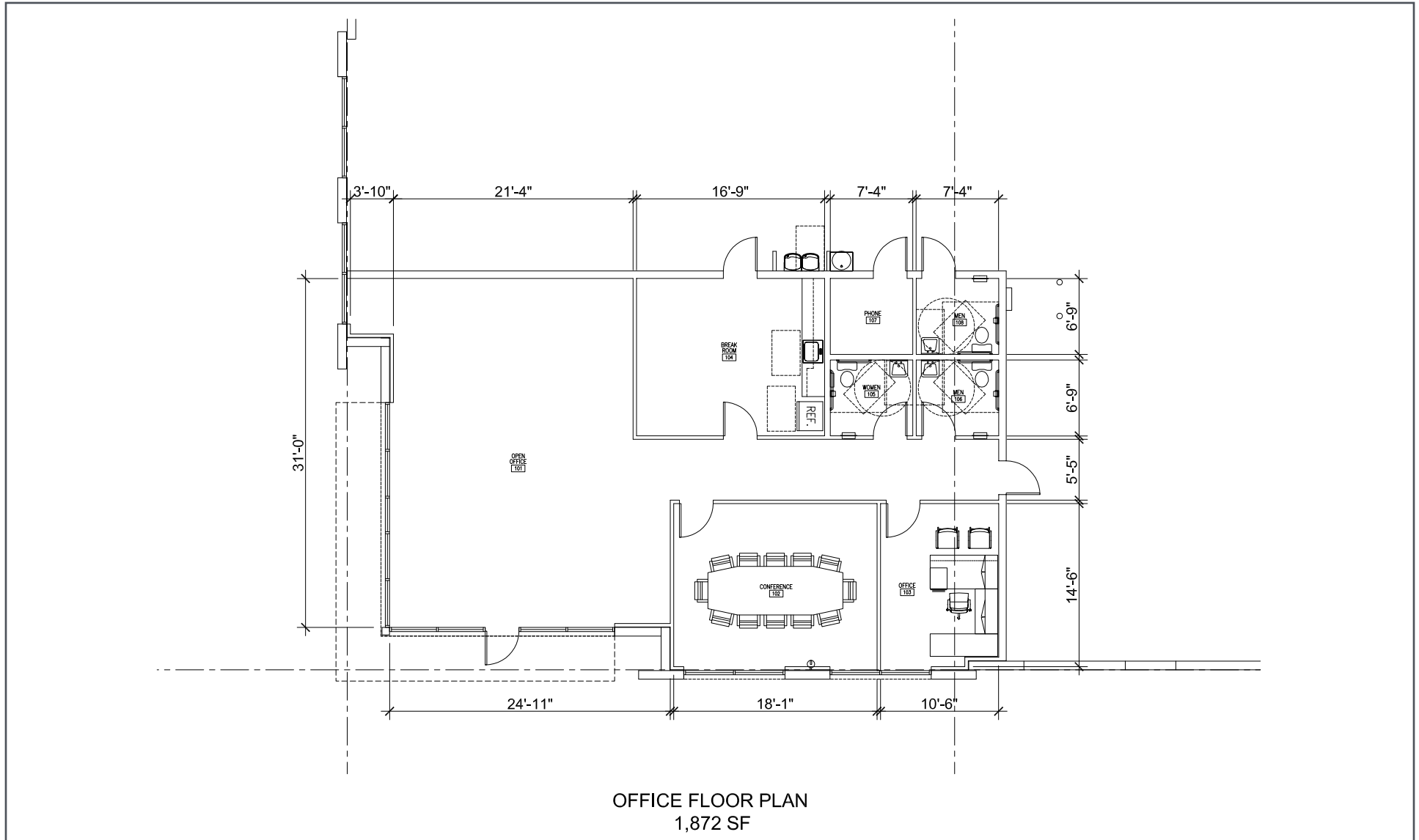
ST. JOHNS PARKWAY, SANFORD, FL 32771



All information furnished regarding property for sale, rental or financing is from sources deemed reliable, but no warranty or representation is made to the accuracy thereof and same is submitted to errors, omissions, change of price, rental or other conditions prior to sale, lease or financing or withdrawal without notice. No liability of any kind is to be imposed on the broker herein.

I-4 BELTWAY LOGISTICS

ST. JOHNS PARKWAY, SANFORD, FL 32771



All information furnished regarding property for sale, rental or financing is from sources deemed reliable, but no warranty or representation is made to the accuracy thereof and same is submitted to errors, omissions, change of price, rental or other conditions prior to sale, lease or financing or withdrawal without notice. No liability of any kind is to be imposed on the broker herein.