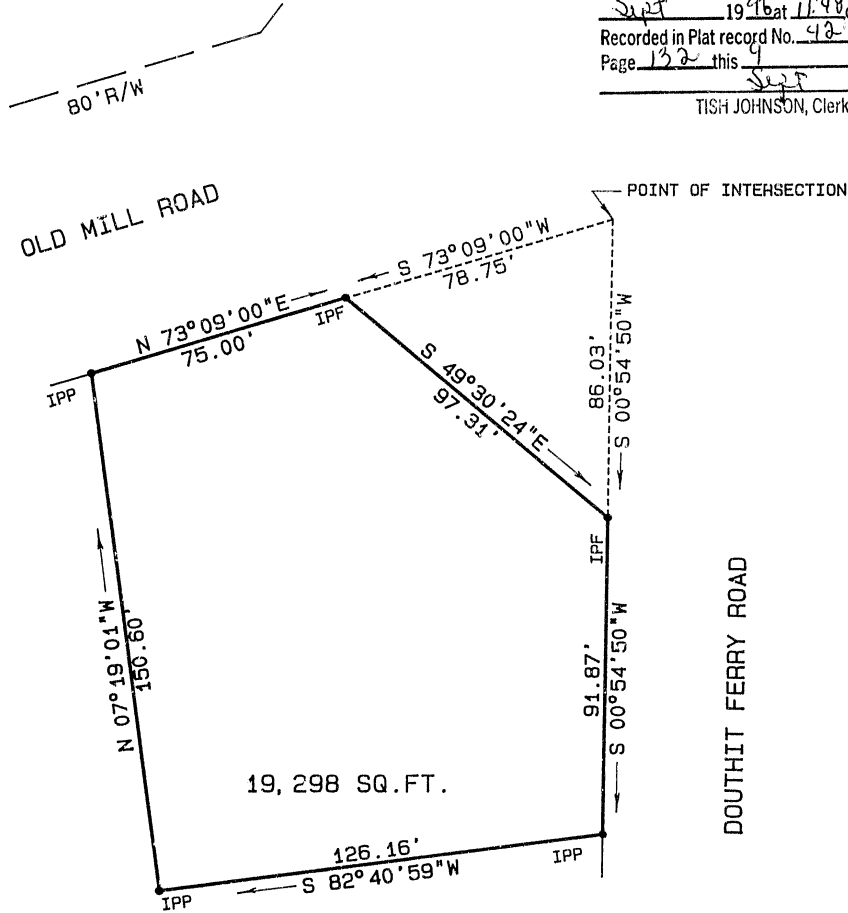


SURVEY FOR
RICHARD L. MOORE
 PROPERTY IN THE CITY OF CARTERSVILLE,
 IN LAND LOT 633, 4th DISTRICT,
 3rd SECTION, BARTOW COUNTY, GEORGIA

Rec # 46-017658
 BARTOW COUNTY
 CLERK'S OFFICE SUPERIOR COURT
 Filed for record this 5 day of
Sept 1996 at 11:40 o'clock A.M.
 Recorded in Plat record No. 42
 Page 132 this 9 day of
Sept 1996
 TISH JOHNSON, Clerk *smc*



.A, c3369, p4385-2, n4772.9, e5752.9

NOTE: IRON PINS ARE (1/2\"/>

FLOOD INSURANCE RATE MAP 13015C0088 F
 DATED SEPT.29, 1989 SHOWS THIS PROPERTY
 IS NOT IN THE 100 YEAR FLOOD ZONE.

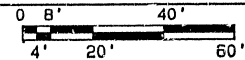
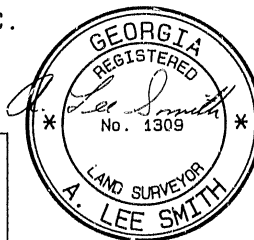
FIELD TRAVERSE:
 CLOSURE; ONE FOOT IN 12,000 FEET
 USING A LIETZ SET 4.
 ANGULAR ERROR; 0°00'06\"/>

PLAT CLOSURE;
 ONE FOOT IN
 118,000 FEET.
 AUGUST 20, 1996

MAG. NORTH

REGISTERED LAND SURVEYOR No. 1309

R/W — RIGHT OF WAY	R — RADIUS
IPP — IRON PIN PLACED	— x — x — FENCE
IPF — IRON PIN FOUND	— · — · — LAND LOT LINE
CM — CONCRETE MARKER	⊕ — CENTER LINE
CH. — CHORD	— / — / — POWER LINE
L — LENGTH OF CURVE	



SCALE 1\"/>

FILE 4385-2