

**ORLANDO PRECISION PARK**  
170 SUNPORT LANE, ORLANDO, FL 32809



**CONVENIENT ACCESS**  
TO SR 528 AND FLORIDA'S TURNPIKE

**8,400 SF AVAILABLE**  
*SUITE 900*

# SPACE HIGHLIGHTS

**ASKING RATE**  
\$13.95/SF NNN

**OPEX\***  
\$3.85 PSF

**MONTHLY RATE**  
\$13,083.00

**WAREHOUSE SF**  
4,900 SF

**OFFICE SF**  
3,500 SF

**CLEAR HEIGHT**  
18'6" - 22"

**LOADING DOORS**  
2 DOCK DOORS  
1 RAMP

**PARKING RATIO**  
1.92/1,000 SF

**ZONING**  
IND-4

**ELECTRICAL SPECS**  
3-PHASE

**YEAR BUILT**  
1997

**AVAILABILITY**  
MARCH 1, 2024

*\*Denotes Estimated Operating Expenses for 2024*

## CONTACT INFORMATION

**TAYLOR ZAMBITO**  
Senior Director  
+1 407 541 4409  
taylor.zambito@cushwake.com

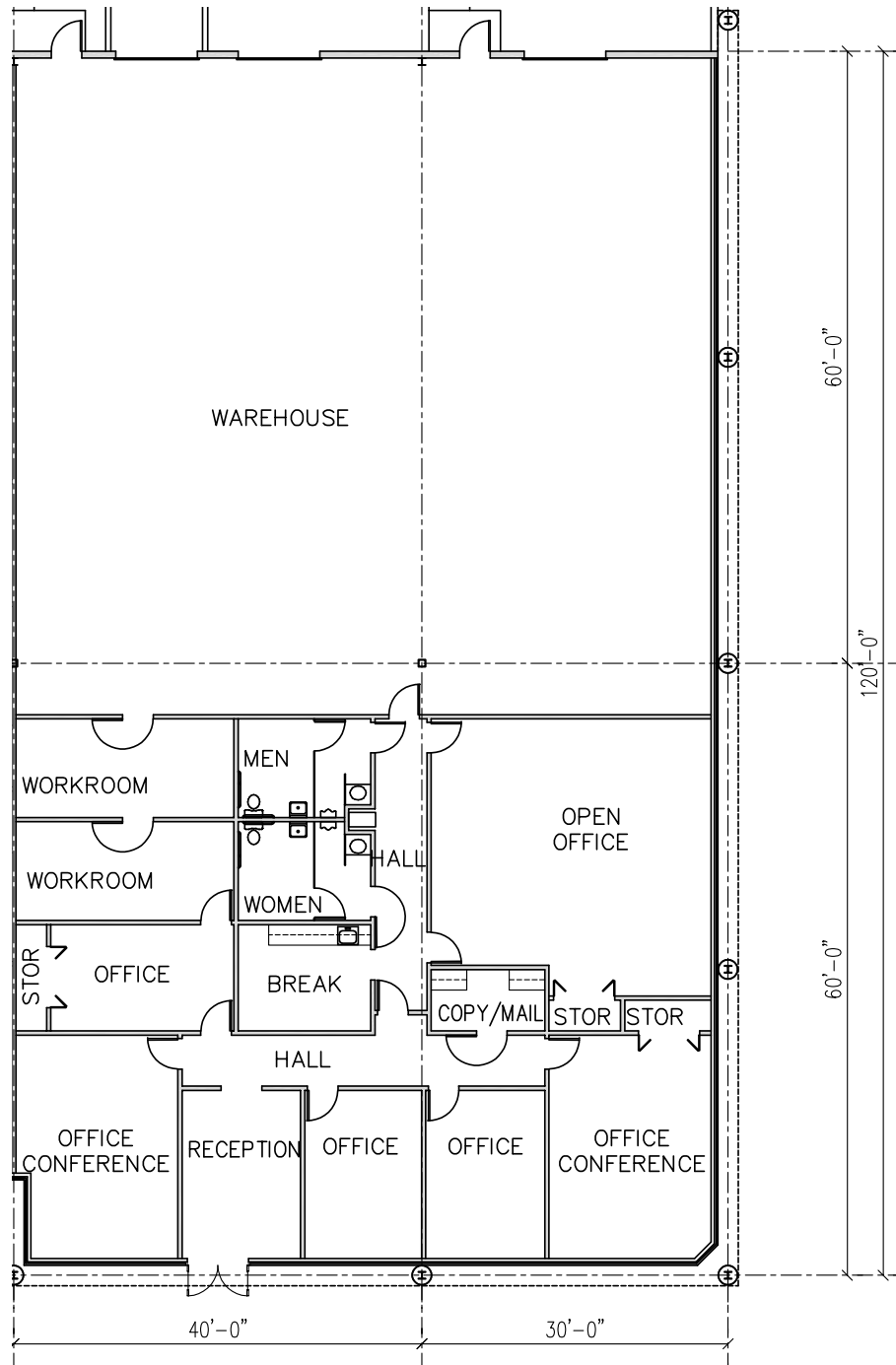
**RYAN HUBBARD**  
Director  
+1 407 541 4390  
ryan.hubbard@cushwake.com



©2023 Cushman & Wakefield. All rights reserved. The information contained in this communication is strictly confidential. This information has been obtained from sources believed to be reliable but has not been verified. NO WARRANTY OR REPRESENTATION, EXPRESS OR IMPLIED, IS MADE AS TO THE CONDITION OF THE PROPERTY (OR PROPERTIES) REFERENCED HEREIN OR AS TO THE ACCURACY OR COMPLETENESS OF THE INFORMATION CONTAINED HEREIN, AND SAME IS SUBMITTED SUBJECT TO ERRORS, OMISSIONS, CHANGE OF PRICE, RENTAL OR OTHER CONDITIONS, WITHDRAWAL WITHOUT NOTICE, AND TO ANY SPECIAL LISTING CONDITIONS IMPOSED BY THE PROPERTY OWNER(S). ANY PROJECTIONS, OPINIONS OR ESTIMATES ARE SUBJECT TO UNCERTAINTY AND DO NOT SIGNIFY CURRENT OR FUTURE PROPERTY PERFORMANCE.

# SITE LAYOUT

## SUITE 900



## CONTACT INFORMATION

**TAYLOR ZAMBITO**  
Senior Director  
+1 407 541 4409  
taylor.zambito@cushwake.com

**RYAN HUBBARD**  
Director  
+1 407 541 4390  
ryan.hubbard@cushwake.com

