

FOR LEASE

12,372 SF AVAILABLE
2180 PREMIER ROW
ORLANDO, FL



RENOVATIONS
COMPLETE Q1 2024

FOR LEASE

12,372 SF AVAILABLE
2180 PREMIER ROW
ORLANDO, FL



12,372 SF
AVAILABLE

PREMIER ROW

CURRENCY DRIVE



RENOVATIONS
COMPLETE Q1 2024

FOR LEASE

12,372 SF AVAILABLE
2180 PREMIER ROW
ORLANDO, FL



SUITE INFORMATION

- 12,372 SF AVAILABLE
- 20' CLEAR HEIGHT
- 2,800 SF OFFICE
- NEW TPO ROOF
- 70' FENCED & SECURED TRUCK COURT
- 4 DOCK HIGH DOORS
- SEALCOAT & STRIPED TRUCK COURT
- 22 PARKING SPACES
- 480V, 3-PHASE POWER
- Q1 2024 MAKEREADY COMPLETION

MARKETED BY:

JUSTIN RUBY

407.865.0311

JUSTIN.RUBY@FOUNDRYCOMMERCIAL.COM

JEROD FREELAND

321-591-5404

JEROD.FREELAND@FOUNDRYCOMMERCIAL.COM

JOEY WOODMAN

407.748.5888

JOEY.WOODMAN@FOUNDRYCOMMERCIAL.COM



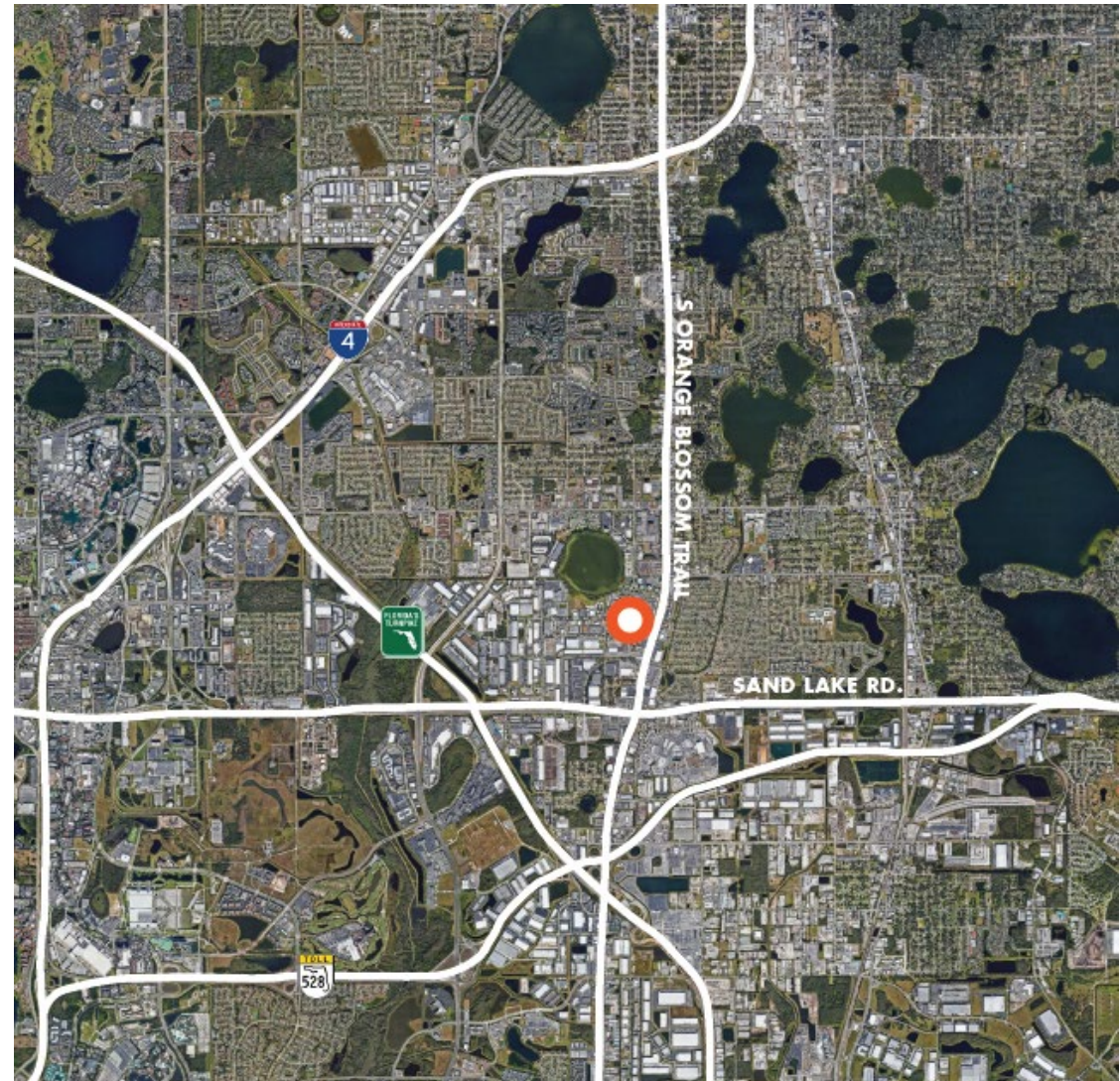
OWNED AND
MANAGED BY:



2180 PREMIER ROW

12,372 SQUARE FEET

AVAILABLE APRIL 1, 2024



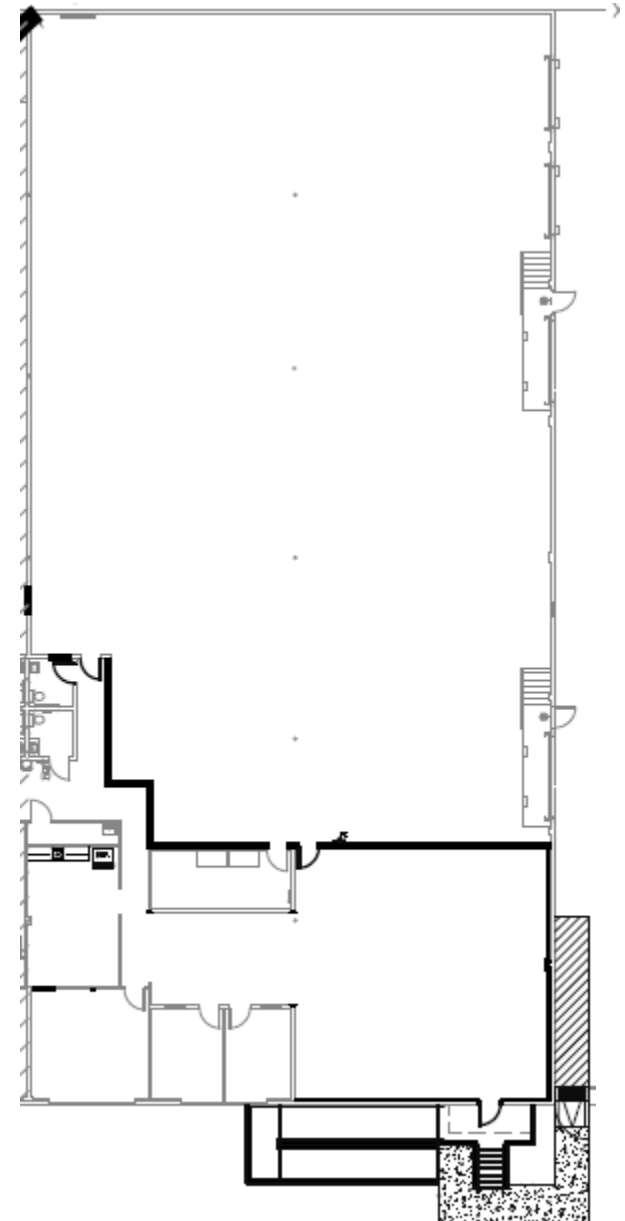
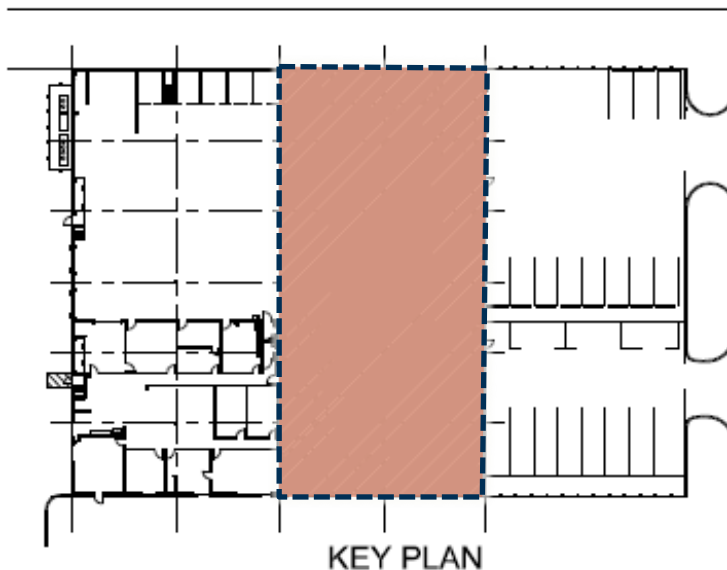
FOR LEASE

12,372 SF AVAILABLE
2180 PREMIER ROW
ORLANDO, FL



BUILDING FLOOR PLAN – SUITE B | 12,372 SF

- **NEW INTERIOR MAKEREADY COMPLETE Q1 2024**
- **NEW STOREFRONT ALONG PREMIER ROW**
- **NEW TPO ROOF WITH 20 YEAR WARRANTY**
- **SEALCOAT & STRIPED TRUCK COURT**



FOR LEASE

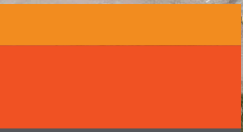
12,372 SF AVAILABLE
2180 PREMIER ROW
ORLANDO, FL



12,372 SF
AVAILABLE

PREMIER ROW

CURRENCY DRIVE



FOUNDRY
COMMERCIAL

RENOVATIONS
COMPLETE Q1 2024