

FOR LEASE

12,322 SF AVAILABLE
8350 PARKLINE BLVD.
ORLANDO, FL



12,322 SF AVAILABLE

ORANGE AVE

PARKLINE BLVD



FOR LEASE

12,322 SF AVAILABLE
8350 PARKLINE BLVD.
ORLANDO, FL



FOR LEASE

12,322 SF AVAILABLE
8350 PARKLINE BLVD.
ORLANDO, FL



SUITE INFORMATION: 11-13

- 12,322 SF AVAILABLE
- 2,200 SF OFFICE
- 19'6" – 22' CLEAR HEIGHT
- 3 DOCK HIGH DOORS
 - 2 10X10
 - 1 10X14
- 80' +/- TRUCK COURT
- ZONED I-2/ I-3 INDUSTRIAL
- 3-PHASE POWER
- CLIMATE CONTROLLED
- EASY ACCESS TO THE ORLANDO INTERNATIONAL AIRPORT, SR-528, FLORIDA TURNPIKE, AND I-4

MARKETED BY:

JUSTIN RUBY, SIOR, CCIM

407.865.0311

JUSTIN.RUBY@FOUNDRYCOMMERCIAL.COM

JEROD FREELAND

321.591.5404

JEROD.FREELAND@FOUNDRYCOMMERCIAL.COM

JOEY WOODMAN

407.748.5888

JOEY.WOODMAN@FOUNDRYCOMMERCIAL.COM

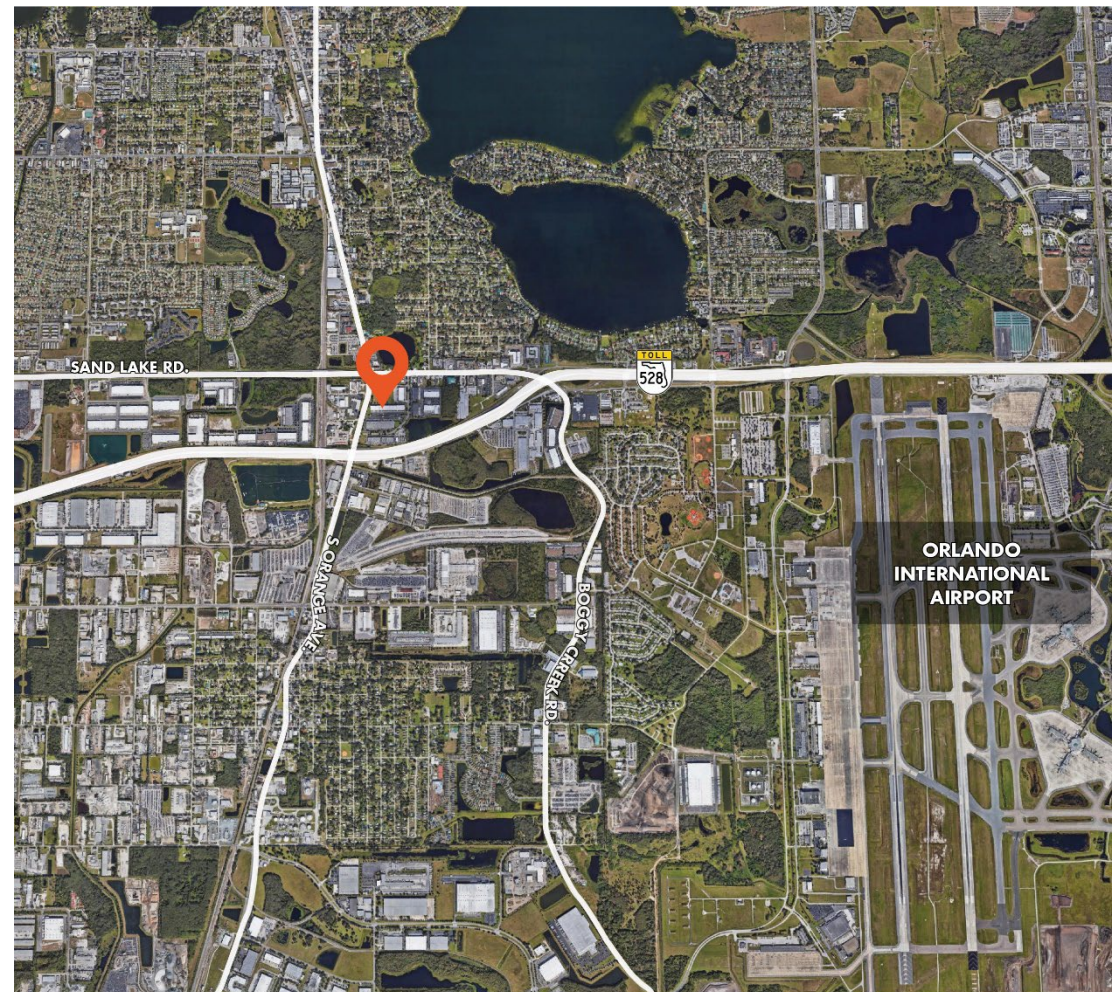


OWNED AND
MANAGED BY:



8350 PARKLINE BLVD.

12,322 SQUARE FEET

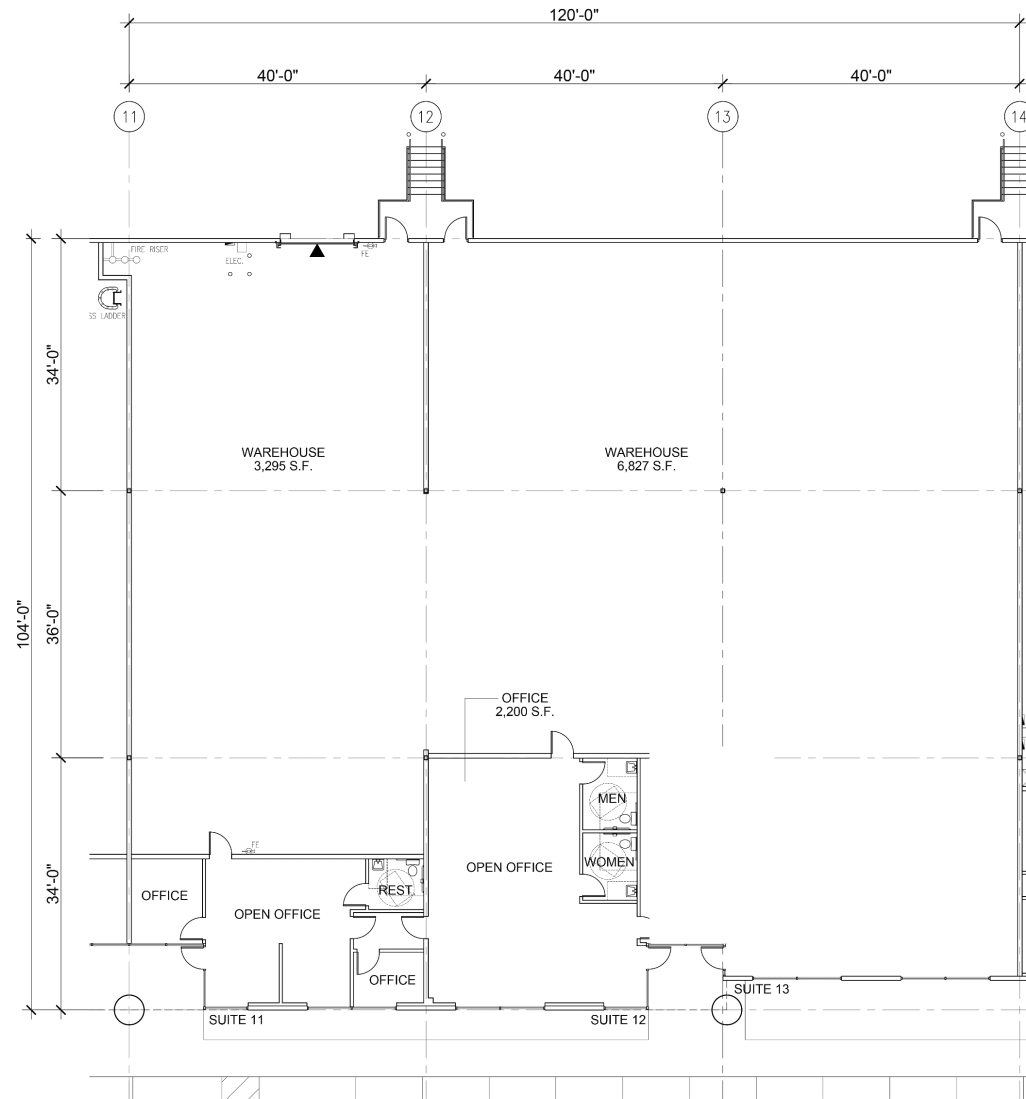


FOR LEASE

12,322 SF AVAILABLE
8350 PARKLINE BLVD.
ORLANDO, FL



BUILDING FLOOR PLAN



FLOOR PLAN
12,322 S.F.

FOR LEASE

12,322 SF AVAILABLE
8350 PARKLINE BLVD.
ORLANDO, FL

