

7003

JOHN YOUNG COMMERCE CENTER

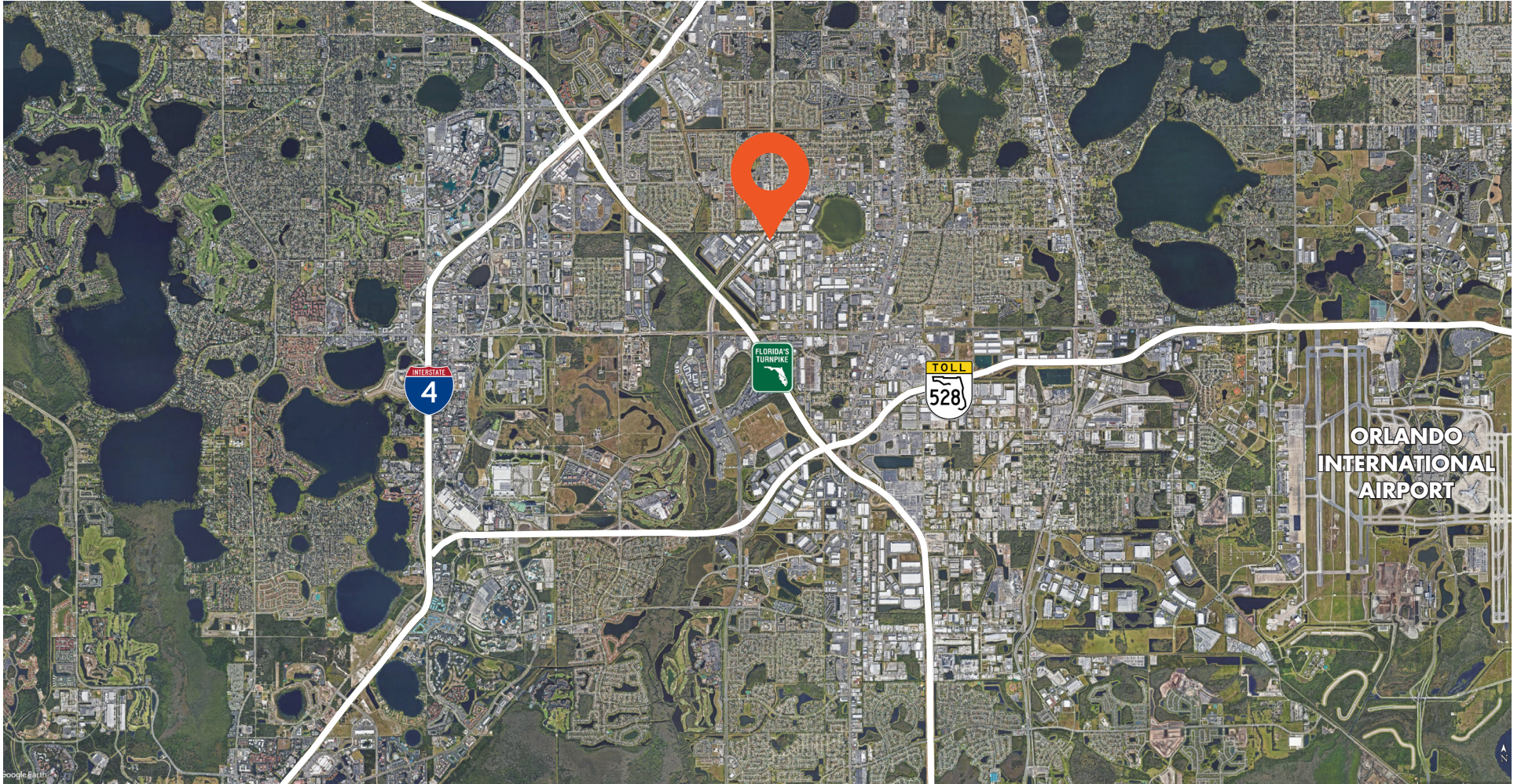
7003 PRESIDENTS DR. | SUITE 600

±7,145 RSF AVAILABLE FOR LEASE

±7,145 AVAILABLE FOR LEASE

JOHN YOUNG COMMERCE CENTER | 7003 PRESIDENTS DR., ORLANDO, FL

PROPERTY MAP



FOR MORE INFORMATION, PLEASE CONTACT:

JUSTIN RUBY, SIOR, CCIM | **407.540.7727**

Principal

Justin.Ruby@foundrycommercial.com

Licensed Real Estate Broker

JOEY WOODMAN | **407.757.1515**

Senior Associate

Joey.Woodman@foundrycommercial.com

Licensed Real Estate Broker

EASTGROUP
PROPERTIES

FOUNDRY
COMMERCIAL

Although the information contained herein was provided by sources believed to be reliable, Foundry Commercial makes no representation, expressed or implied, as to its accuracy and said information is subject to errors, omissions or changes.

foundrycommercial.com

±7,145 AVAILABLE FOR LEASE

JOHN YOUNG COMMERCE CENTER | 7003 PRESIDENTS DR., ORLANDO, FL

SPACE FOR LEASE

LOCATION OVERVIEW

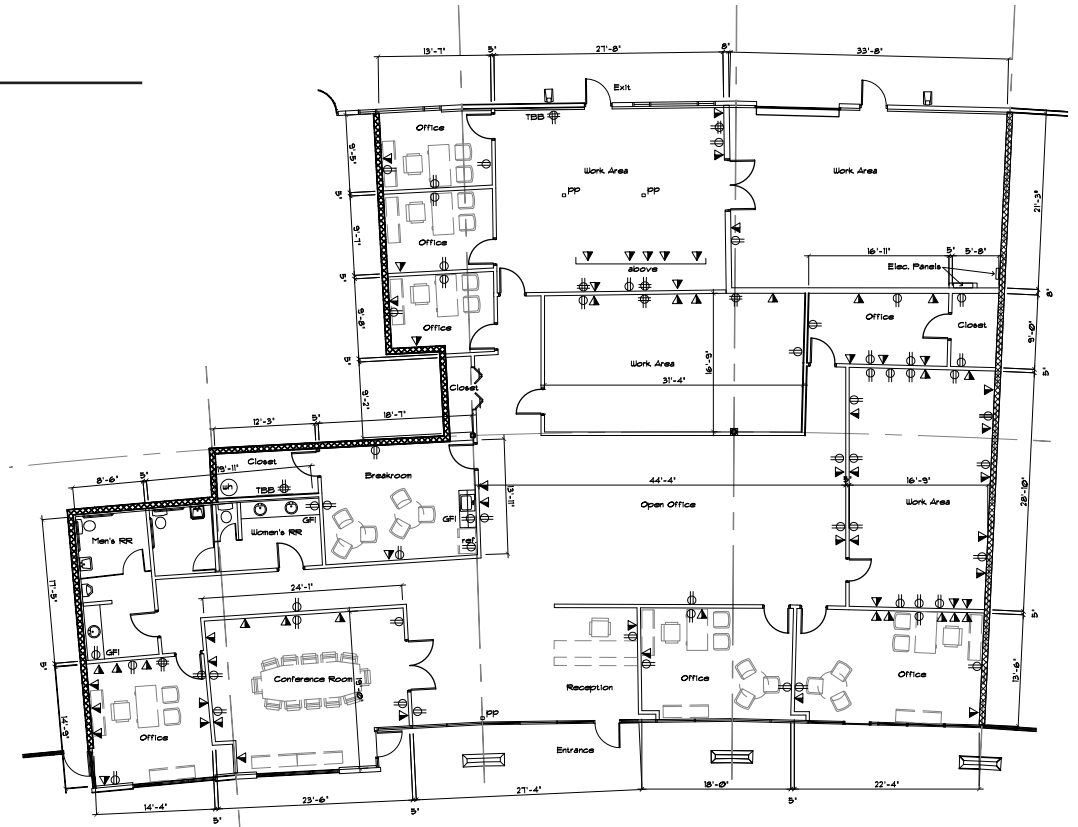
Situated in the highly sought-after Orlando Central Park, this property is located off of Presidents Drive at the intersection of John Young Park. This building offers excellent access to I-4, Sand Lake Road, The Turnpike and the Orlando International Airport.

PROPERTY FEATURES

- Impressive reception area with wood floor
- Convenient access
- Flex office space

BUILDING FEATURES

AVAILABLE SF	± 7,145 SF
OFFICE	100% Air Conditioned
LOADING	1 Grade Level Door
LEASE RATE	\$10.50/SF NNN
ESTIMATED 2021 OPEX	\$2.59/SF
SPRINKLERS	Class IV
ZONING	I-3
CEILING HEIGHT	10'
PARKING RATIO	2/1,000
AVAILABLE	1/1/2022



FOR MORE INFORMATION, PLEASE CONTACT:

JUSTIN RUBY, SIOR, CCIM | 407.540.7727
Principal
Justin.Ruby@foundrycommercial.com
Licensed Real Estate Broker

JOEY WOODMAN | 407.757.1515
Senior Associate
Joey.Woodman@foundrycommercial.com
Licensed Real Estate Broker

EASTGROUP
PROPERTIES

FOUNDRY
COMMERCIAL

Although the information contained herein was provided by sources believed to be reliable, Foundry Commercial makes no representation, expressed or implied, as to its accuracy and said information is subject to errors, omissions or changes.

[foundrycommercial.com](https://www.foundrycommercial.com)