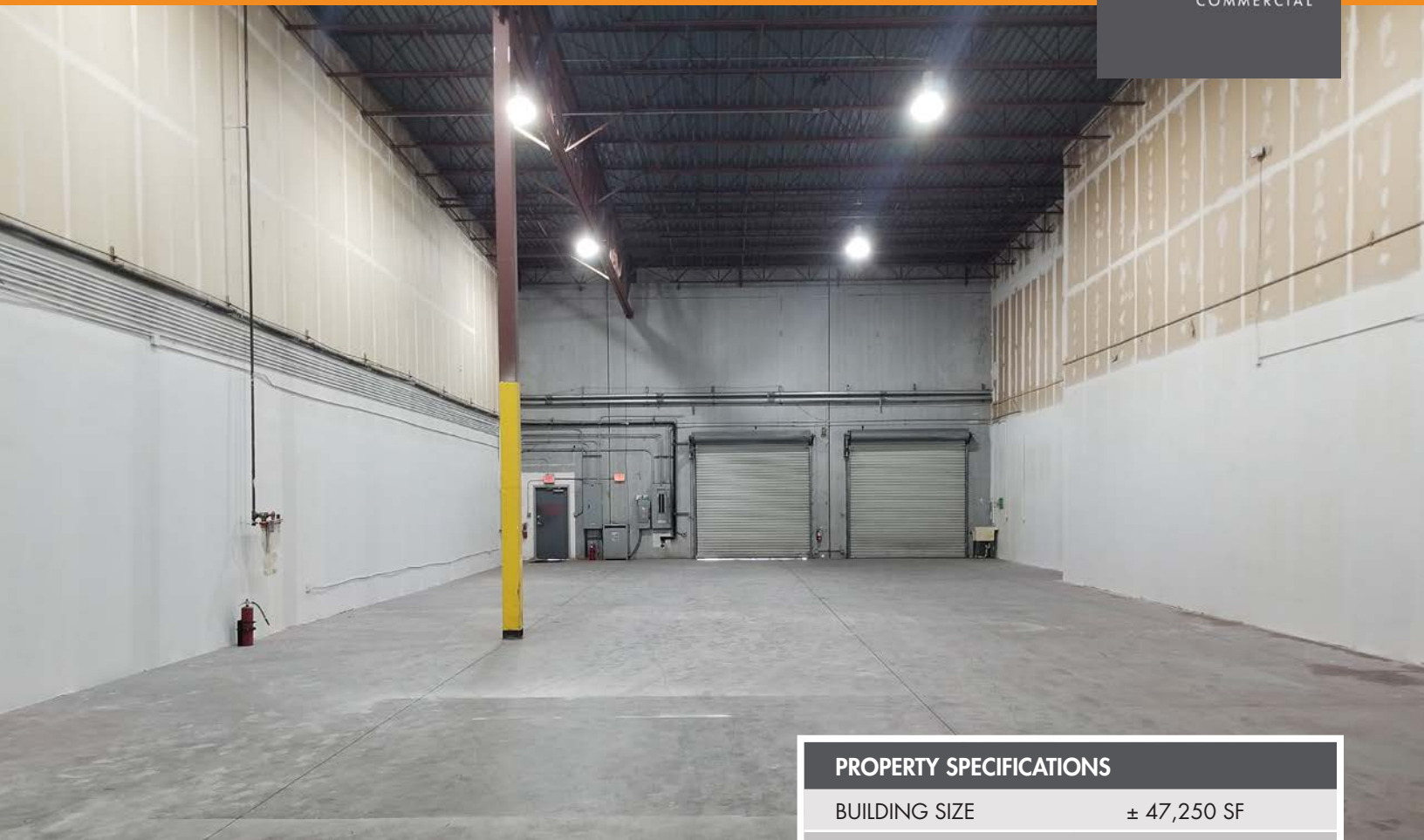


1151 N KELLER RD, ORLANDO, FL 32810
± 7,090 SF AVAILABLE

FOUNDRY
COMMERCIAL



PROPERTY INFORMATION

- Newly Renovated
- 5 Private offices
- Breakroom
- 4 Restrooms
- LED Warehouse Lighting
- 2 Dock High Doors
- 3 Phase 400 amps

PROPERTY SPECIFICATIONS

BUILDING SIZE	± 47,250 SF
SUITE B	± 7,090 SF
CLEAR	24'
LOADING	Rear
DOORS	Dock high
ZONING	PD
ELECTRICAL	3 Phase
UTILITIES	Electric - Duke Water - Orange Trash - Maitland
YEAR BUILT	1997
CONSTRUCTION	Tilt wall

FOR MORE INFORMATION, PLEASE CONTACT:

JUSTIN RUBY, SIOR, CCIM
407.865.0311
Justin.Ruby@foundrycommercial.com

JOEY WOODMAN
407.748-5888
Joey.Woodman@foundrycommercial.com

Foundry Commercial
420 South Orange Ave. Suite 400
Orlando, FL 32801

foundrycommercial.com

Although the information contained therein was provided from sources believed to be reliable, Foundry Commercial makes no representation, expressed or implied, as to its accuracy and said information is subject to errors, omissions or changes.

1151 N KELLER RD, ORLANDO, FL 32810
± 7,090 SF AVAILABLE



FOR MORE INFORMATION, PLEASE CONTACT:

JUSTIN RUBY, SIOR, CCIM
407.865.0311
Justin.Ruby@foundrycommercial.com

JOEY WOODMAN
407.748.5888
Joey.Woodman@foundrycommercial.com

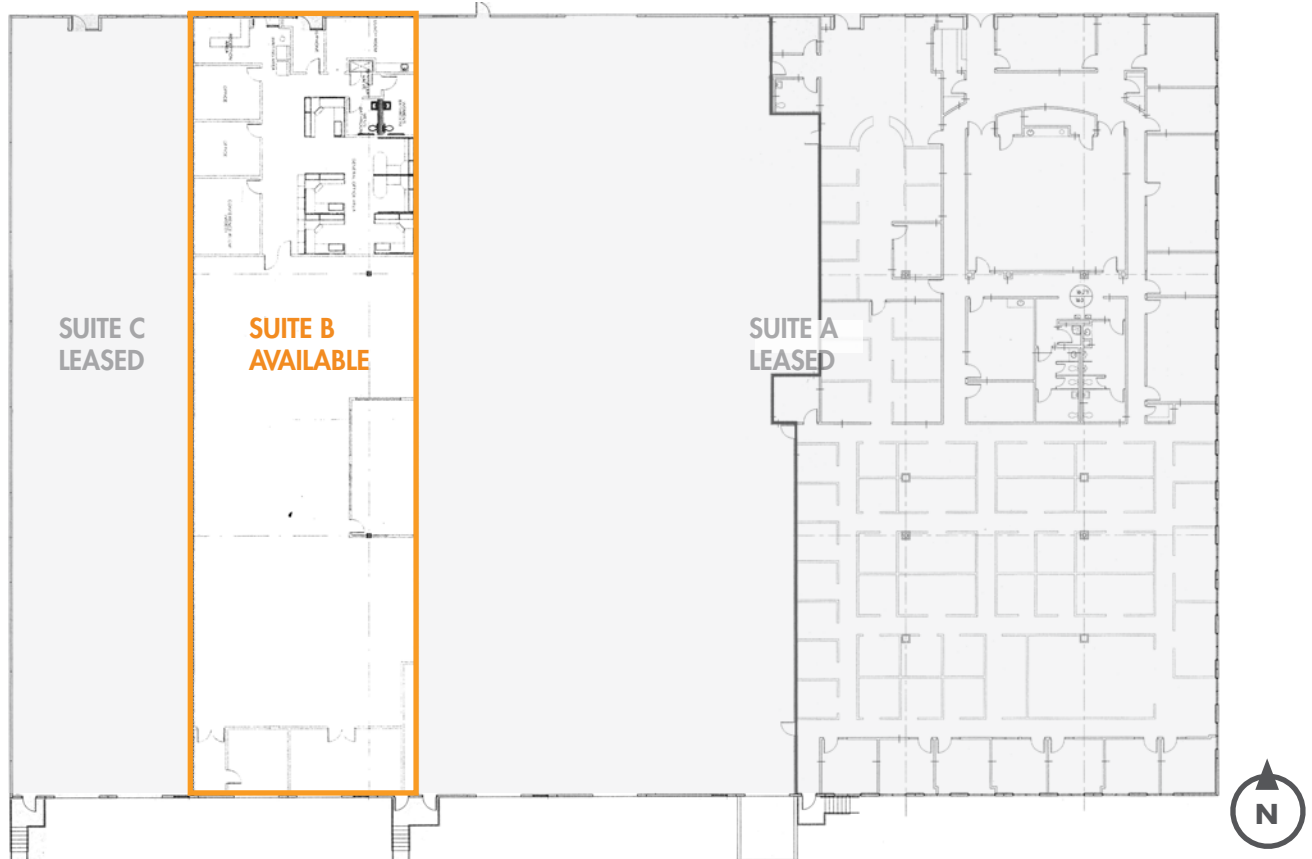
Although the information contained therein was provided from sources believed to be reliable, Foundry Commercial makes no representation, expressed or implied, as to its accuracy and said information is subject to errors, omissions or changes.

FOUNDRY
COMMERCIAL

420 South Orange Ave. Suite 400
Orlando, FL 32801

foundrycommercial.com

1151 N KELLER RD, ORLANDO, FL 32810
± 7,090 SF AVAILABLE



SUITE B	
TOTAL SF	± 7,090 SF
OFFICE	± 3,000 SF
WAREHOUSE	± 4,090 SF
CLEAR HEIGHT	24'
DOORS	2 Dock high
COLUMNS	40 x 40
YEAR BUILT	1997

FOR MORE INFORMATION, PLEASE CONTACT:

JUSTIN RUBY, SIOR, CCIM
407.865.0311
Justin.Ruby@foundrycommercial.com

JOEY WOODMAN
407.748.5888
Joey.Woodman@foundrycommercial.com

FOUNDRY
COMMERCIAL

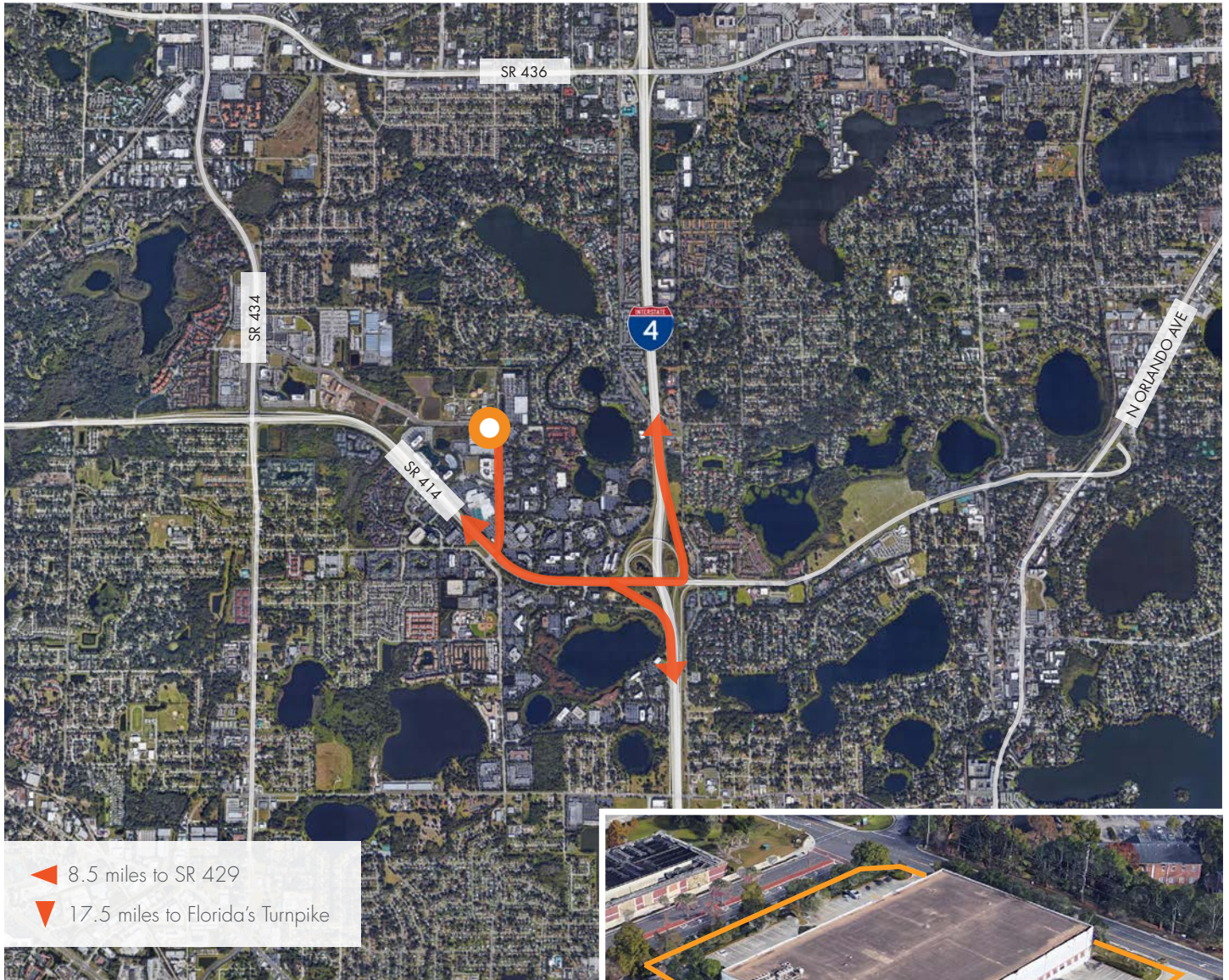
420 South Orange Ave. Suite 400
Orlando, FL 32801

foundrycommercial.com

Although the information contained therein was provided from sources believed to be reliable, Foundry Commercial makes no representation, expressed or implied, as to its accuracy and said information is subject to errors, omissions or changes.

1151 N KELLER RD, ORLANDO, FL 32810
± 7,090 SF AVAILABLE

PROPERTY LOCATION



FOR MORE INFORMATION, PLEASE CONTACT:

JUSTIN RUBY, SIOR, CCIM
407.865.0311
Justin.Ruby@foundrycommercial.com

JOEY WOODMAN
407.748.5888
Joey.Woodman@foundrycommercial.com

FOUNDRY
COMMERCIAL

420 South Orange Ave. Suite 400
Orlando, FL 32801

foundrycommercial.com

Although the information contained therein was provided from sources believed to be reliable, Foundry Commercial makes no representation, expressed or implied, as to its accuracy and said information is subject to errors, omissions or changes.