

We know this land.



Twisted Turtle Towns

304 S. WILLOW AVENUE

TAMPA, FL 33606

Eshenbaugh
LAND COMPANY



The Dirt Dog

813.287.8787

www.thedirtdog.com

Overview



Property Description

PROPERTY DESCRIPTION

This property is wrapped in the planned Twisted Turtle Splash Resort, which is expected to break ground in May 2024. The water park is currently planned to start construction at the end of 2024.

The site currently has the zoning in place for 15 units per acre and will be delivered with power, sewer, and water at the site. The drainage engineering is complete and ready to submit to SWFWMD.

LOCATION DESCRIPTION

The Twisted Turtle Townhomes are located immediately off I-75 and the State Road 48 interchange in Bushnell in Sumter County. The property is in very close proximity to a Walmart anchored shopping center. Also, it's centrally located between the booming markets of Tampa, Ocala, and the Villages.

MUNICIPALITY

Sumter

PROPERTY SIZE

15± Acres

ZONING

RMF-15

PARCEL ID

Part of N07-055 & N07-056

PRICE

Call Broker for Guidance

BROKER CONTACT INFO

Tyler Woody

Sales Associate

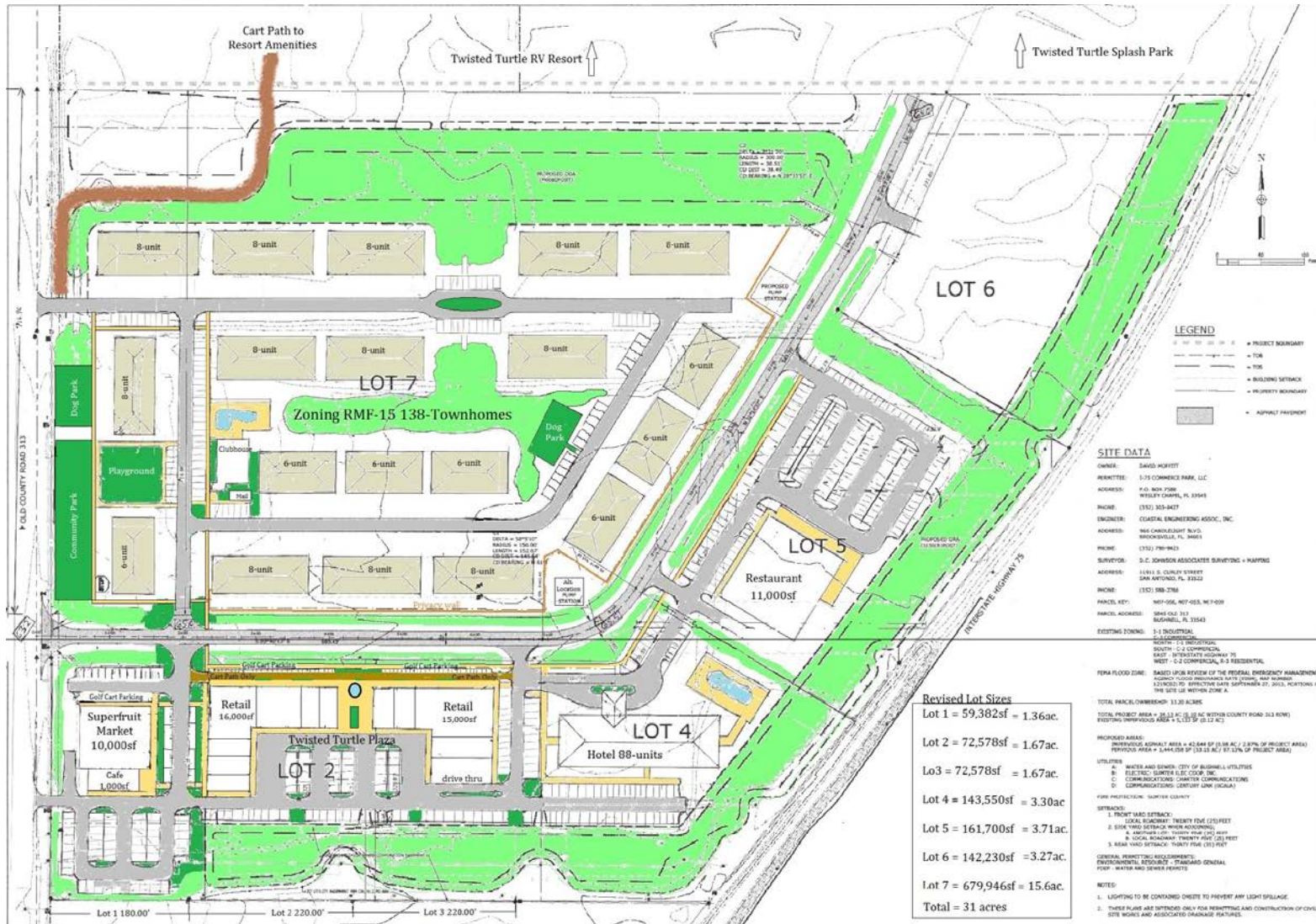
813.287.8787 x11

Tyler@TheDirtDog.com

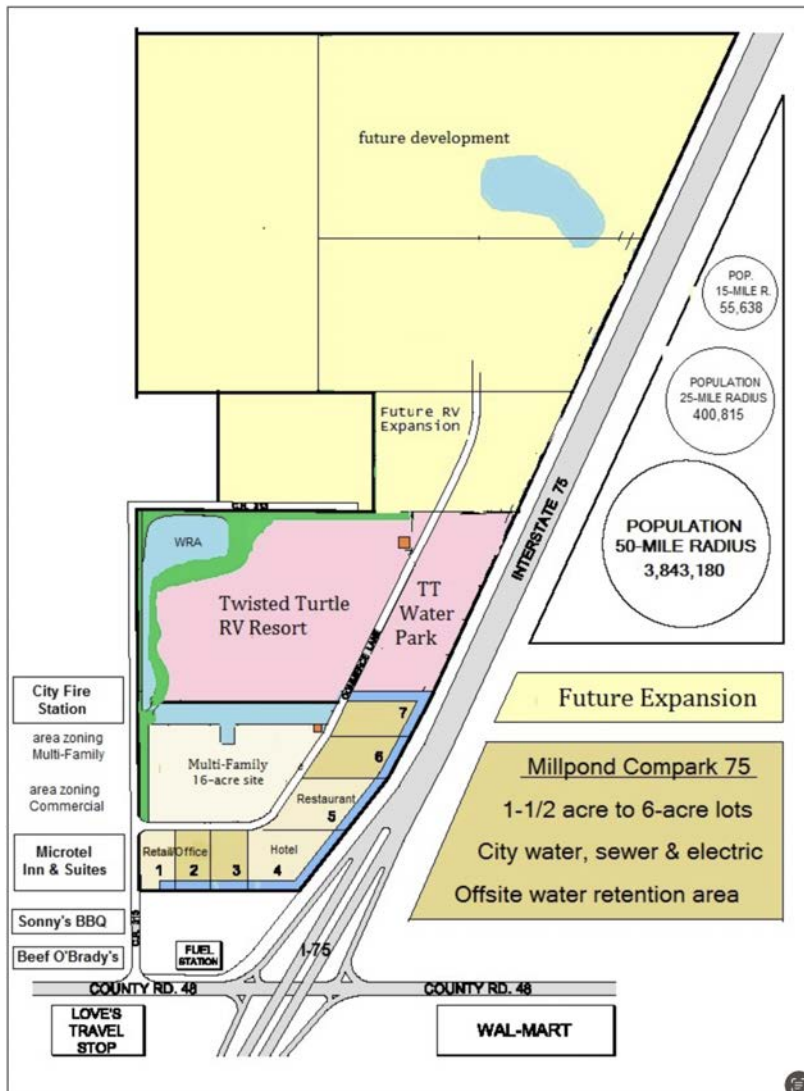
Aerial



Conceptual Layout



Master Plans



Location Map



Confidentiality & Disclaimer

All materials and information received or derived from Eshenbaugh Land Company, LLC its directors, officers, agents, advisors, affiliates and/or any third party sources are provided without representation or warranty as to completeness, veracity, or accuracy, condition of the property, compliance or lack of compliance with applicable governmental requirements, developability or suitability, financial performance of the property, projected financial performance of the property for any party's intended use or any and all other matters.

Neither Eshenbaugh Land Company, LLC its directors, officers, agents, advisors, or affiliates makes any representation or warranty, express or implied, as to accuracy or completeness of the any materials or information provided, derived, or received. Materials and information from any source, whether written or verbal, that may be furnished for review are not a substitute for a party's active conduct of its own due diligence to determine these and other matters of significance to such party. Eshenbaugh Land Company, LLC will not investigate or verify any such matters or conduct due diligence for a party unless otherwise agreed in writing.

EACH PARTY SHALL CONDUCT ITS OWN INDEPENDENT INVESTIGATION AND DUE DILIGENCE.

Any party contemplating or under contract or in escrow for a transaction is urged to verify all information and to conduct their own inspections and investigations including through appropriate third party independent professionals selected by such party. All financial data should be verified by the party including by obtaining and reading applicable documents and reports and consulting appropriate independent professionals. Eshenbaugh Land Company, LLC makes no warranties and/or representations

regarding the veracity, completeness, or relevance of any financial data or assumptions. Eshenbaugh Land Company, LLC does not serve as a financial advisor to any party regarding any proposed transaction. All data and assumptions regarding financial performance, including that used for financial modeling purposes, may differ from actual data or performance. Any estimates of market rents and/or projected rents that may be provided to a party do not necessarily mean that rents can be established at or increased to that level. Parties must evaluate any applicable contractual and governmental limitations as well as market conditions, vacancy factors and other issues in order to determine rents from or for the property.

Legal questions should be discussed by the party with an attorney. Tax questions should be discussed by the party with a certified public accountant or tax attorney. Title questions should be discussed by the party with a title officer or attorney. Questions regarding the condition of the property and whether the property complies with applicable governmental requirements should be discussed by the party with appropriate engineers, architects, contractors, other consultants and governmental agencies. All properties and services are marketed by Eshenbaugh Land Company, LLC in compliance with all applicable fair housing and equal opportunity laws.

Eshenbaugh Land Company is a licensed real estate brokerage firm in Florida and William A. Eshenbaugh is the broker of record.