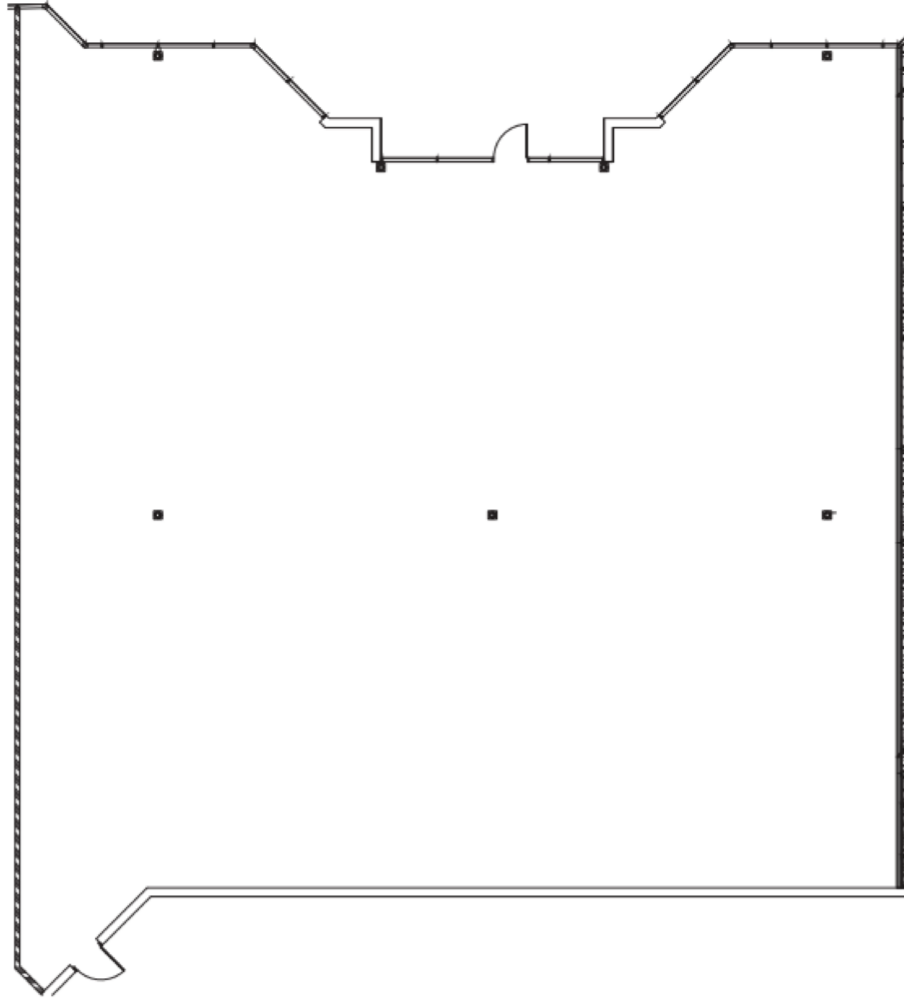


Building 6101

Suite 1130 - 5,729± SF

*Shell Space



**AVISON
YOUNG**

Nathan Eissler, CCIM, SIOR
Principal
D 407 440 6658

Gunner Leslie
Vice President
D 407 440 6642

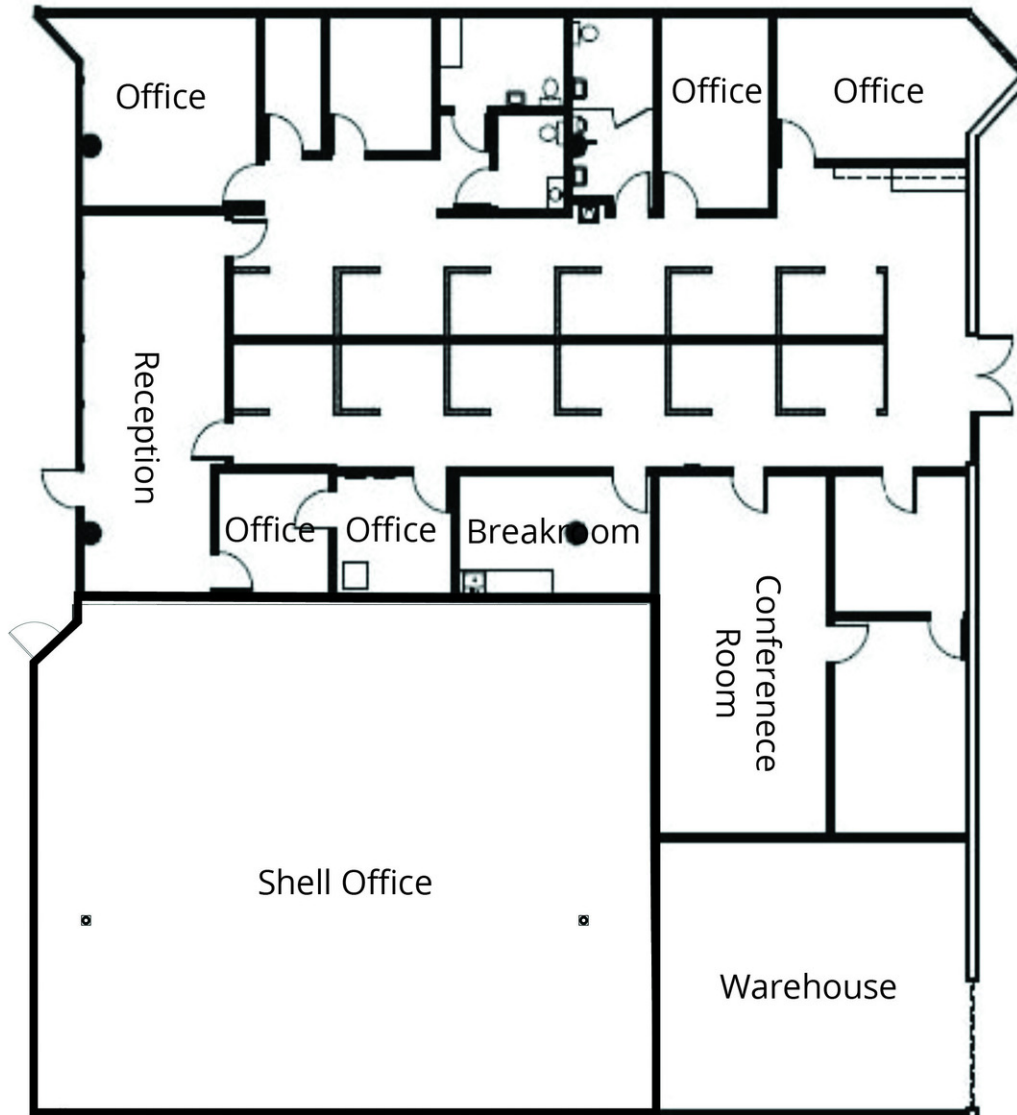
Avison Young - Orlando | 135 W. Central Boulevard, Suite 700 | Orlando, FL 32801

© 2024, Avison Young - Orlando. Information contained herein was obtained from sources deemed reliable and, while thought to be correct, have not been verified.

Avison Young - Orlando does not guarantee the accuracy or completeness of the information presented, nor assumes any responsibility or liability for any errors or omissions therein.

Building 6101

Suite 1175 - 6,660± SF

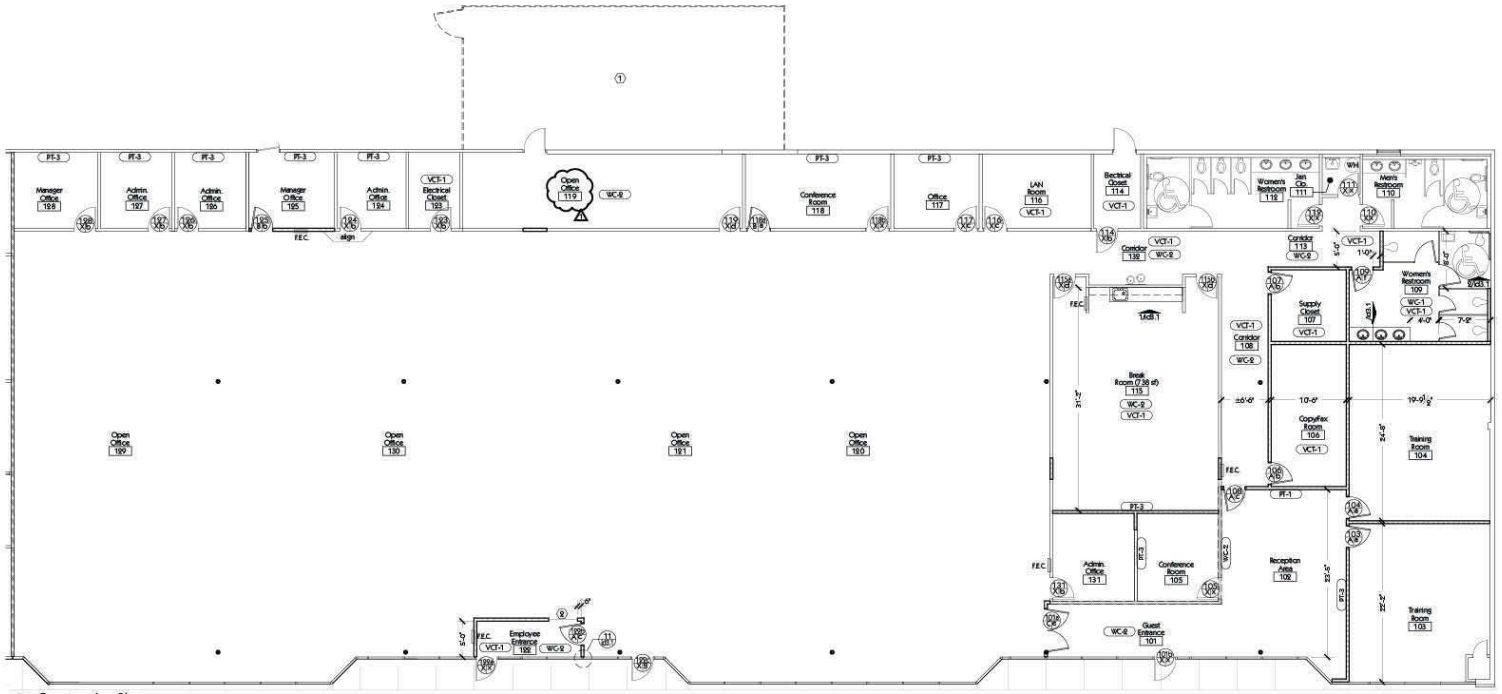


Nathan Eissler, CCIM, SIOR
Principal
D 407 440 6658

Gunner Leslie
Vice President
D 407 440 6642

Building 6149

Suites 2800 - 15,611± SF

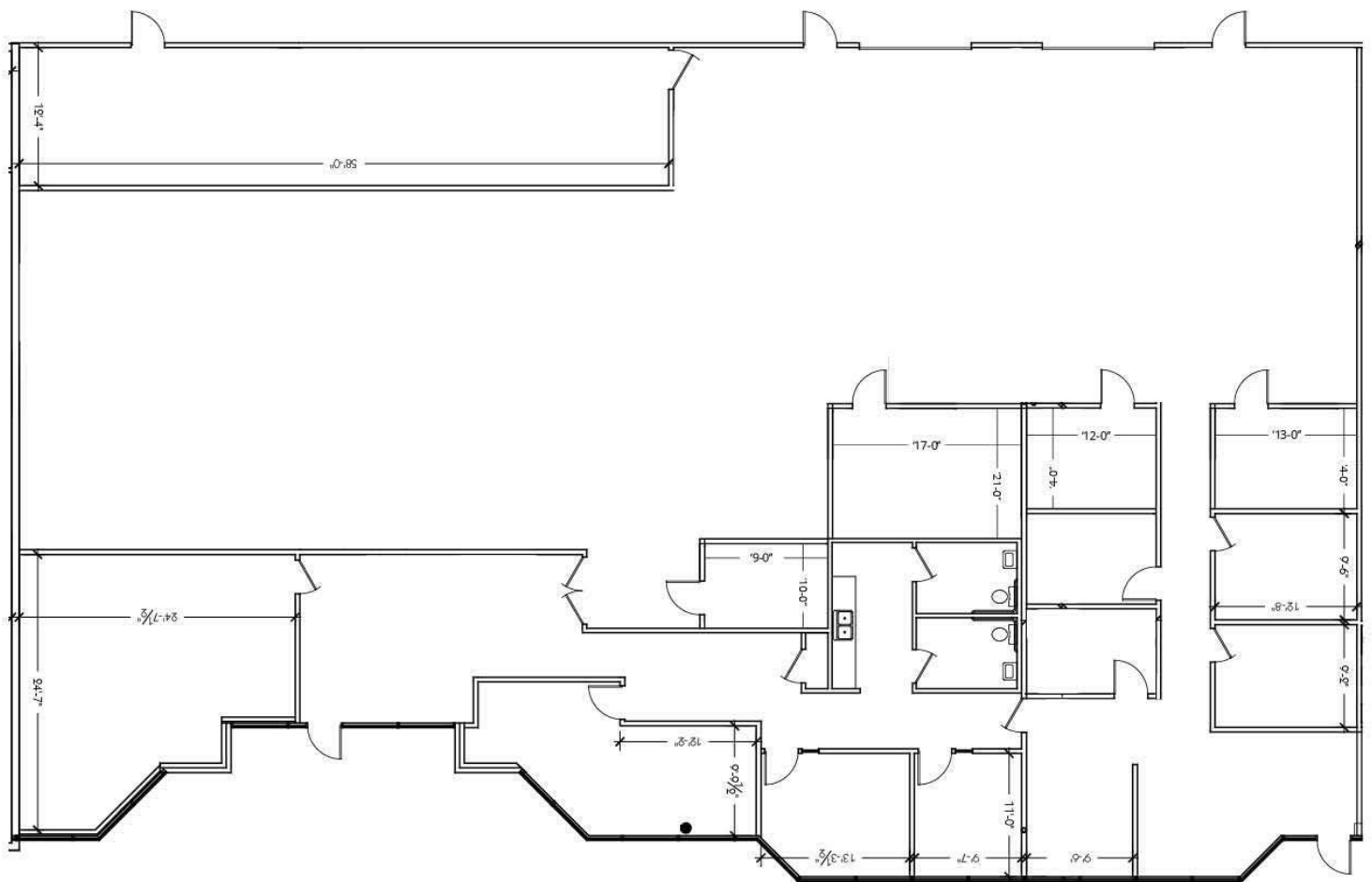


Nathan Eissler, CCIM, SIOR
Principal
D 407 440 6658

Gunner Leslie
Vice President
D 407 440 6642

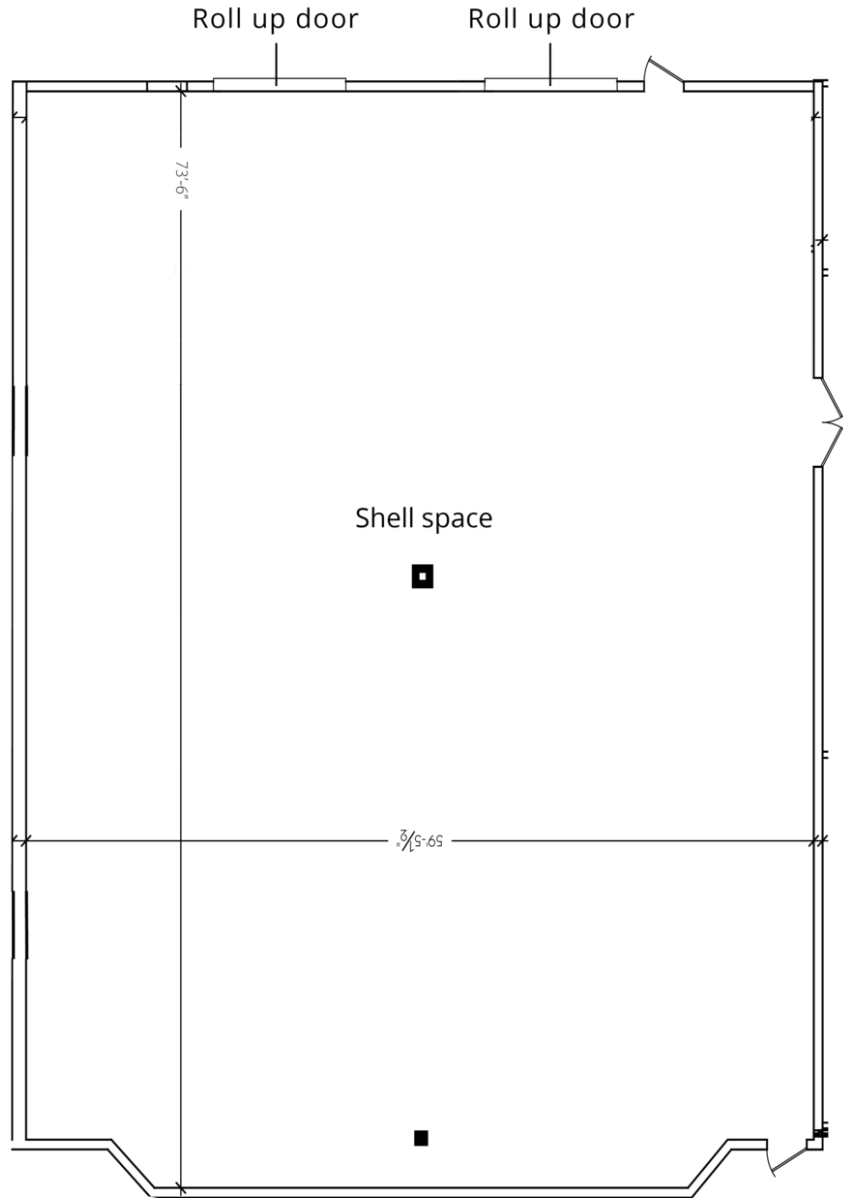
Building 6203

Suite 3500-3600 - 8,300± sf



Building 6203

Suite 3700 - 4,392± SF



Nathan Eissler, CCIM, SIOR
Principal
D 407 440 6658

Gunner Leslie
Vice President
D 407 440 6642

Avison Young - Orlando | 135 W. Central Boulevard, Suite 700 | Orlando, FL 32801

© 2024, Avison Young - Orlando. Information contained herein was obtained from sources deemed reliable and, while thought to be correct, have not been verified.

Avison Young - Orlando does not guarantee the accuracy or completeness of the information presented, nor assumes any responsibility or liability for any errors or omissions therein.