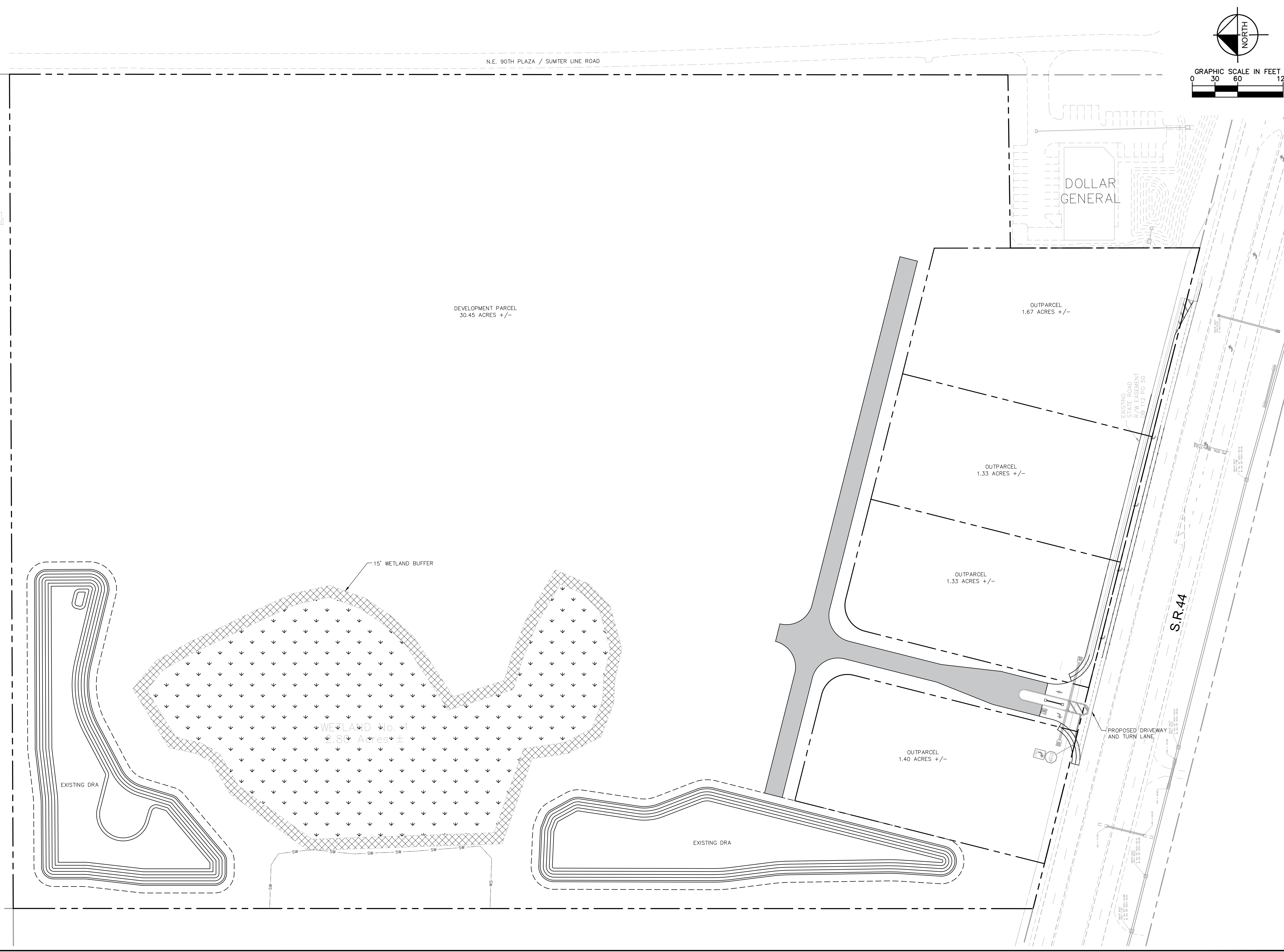


Printed By: Cheston, Duke Sheet: SetN/A Layout: CONCEPT #3 January 15, 2024 02:44:39pm \\kimley-horn.com\EL_OCA\Civil\142820000 - Frontier RV Park\CAD\Exhibits\COMMERCIAL CONCEPT #2.dwg
 This document, together with the concepts and designs presented herein, is intended only for the specific purpose and client for which it was prepared. Reuse of and improper reliance on this document without written authorization and adaptation by Kimley-Horn and Associates, Inc. shall be without liability to Kimley-Horn and Associates, Inc.



SHEET NUMBER EX-1	SUMTER COUNTY FLORIDA		CW4 MIXED USE CONCEPT PREPARED FOR CW4, INC.		CONCEPT PLAN		KHA PROJECT 142820000 DATE JANUARY 2024 SCALE AS SHOWN DESIGNED BY KHA DRAWN BY KHA CHECKED BY RVB	LICENSED PROFESSIONAL RICHARD V. BUSCHÉ FLORIDA LICENSE NUMBER 58568	 © 2024 KIMLEY-HORN AND ASSOCIATES, INC. 101 EAST SILVER SPRINGS BLVD., SUITE 200, Ocala, FL 33470 WWW.KIMLEY-HORN.COM PHONE: 352-438-5000 REGISTRY NO. 35106	NOT FOR CONSTRUCTION No. 00-00-00 KHA REVISIONS DATE BY
	00-00-00 KHA REVISIONS DATE BY									