

For Lease

Office Building

8,168 SF | \$15.00 / SF

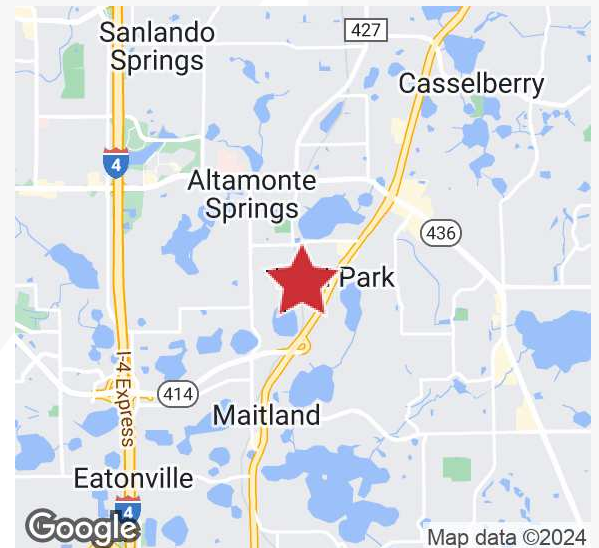


241 Obrien Road

Fern Park, Florida 32730

Property Highlights

- Class B office building with 2 entrances located just outside of Altamonte Springs
- 8,168± SF building on 1.56± acre site
- Zoning - C-1 (Seminole County); perfect for service business
- Less than 10 minutes from I-4/Maitland Blvd interchange
- Blocks from Orlando Ave / US Hwy 17-92
- Security; decorative fence with electronic gate
- 42 parking spaces for vans, trucks and cars
- Move-in condition; furnished office space in most of building



Lease Rate: \$15.00 / SF NNN

For more information

Paul P. Partyka, CCIM, MiCP, CIPS

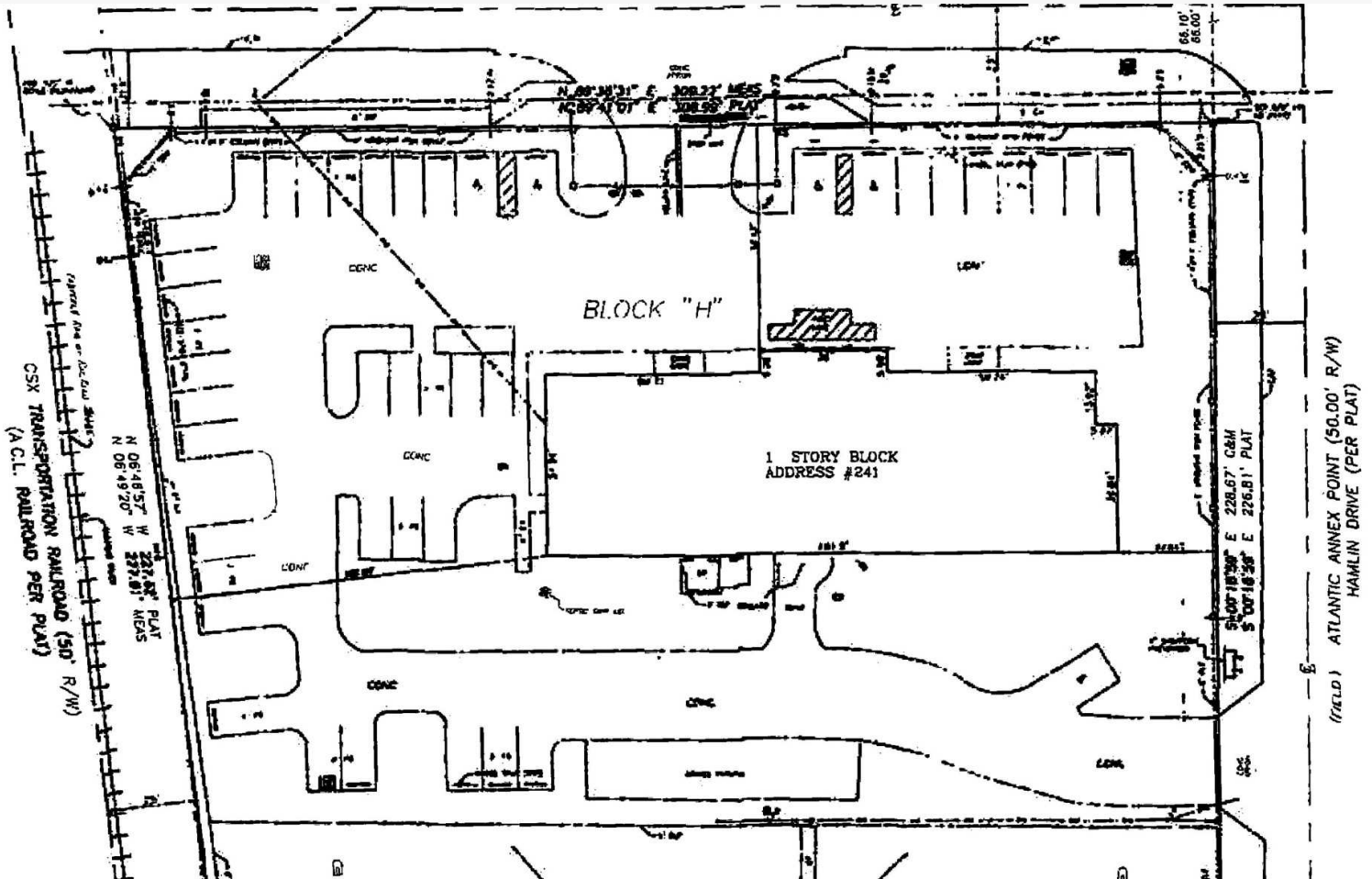
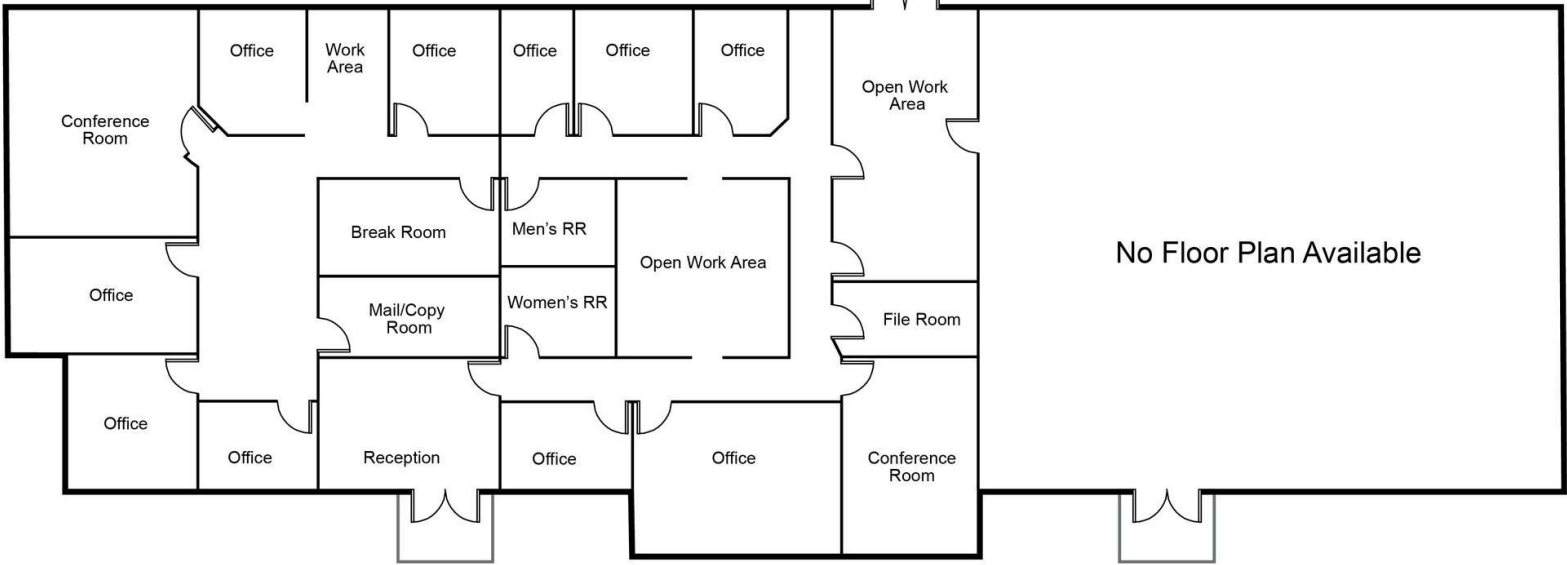
O: 407 949 0758

ppartyka@realvest.com

Floor Plan & Site Plan

5,000± SF

3,168± SF



The information contained herein has been given to us by the owner of the property or other sources we deem reliable. We have no reason to doubt its accuracy, but we do not guarantee it. All information should be verified prior to purchase or lease. Unless otherwise noted, the property is being offered as-is, where is, with all faults.

1800 Pembroke Drive, Suite 350

Orlando, FL 32810

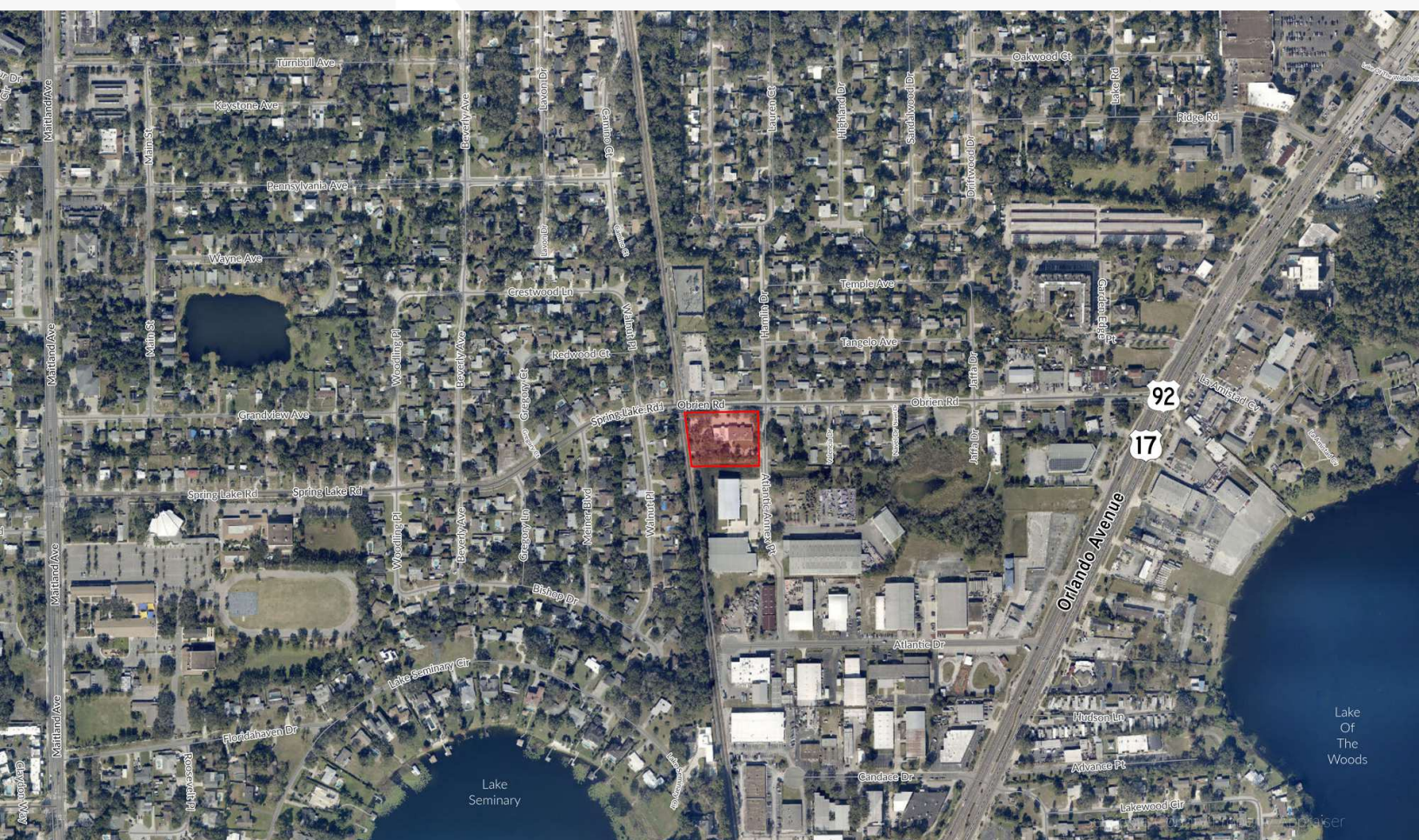
407 875 9989 tel

narealvest.com

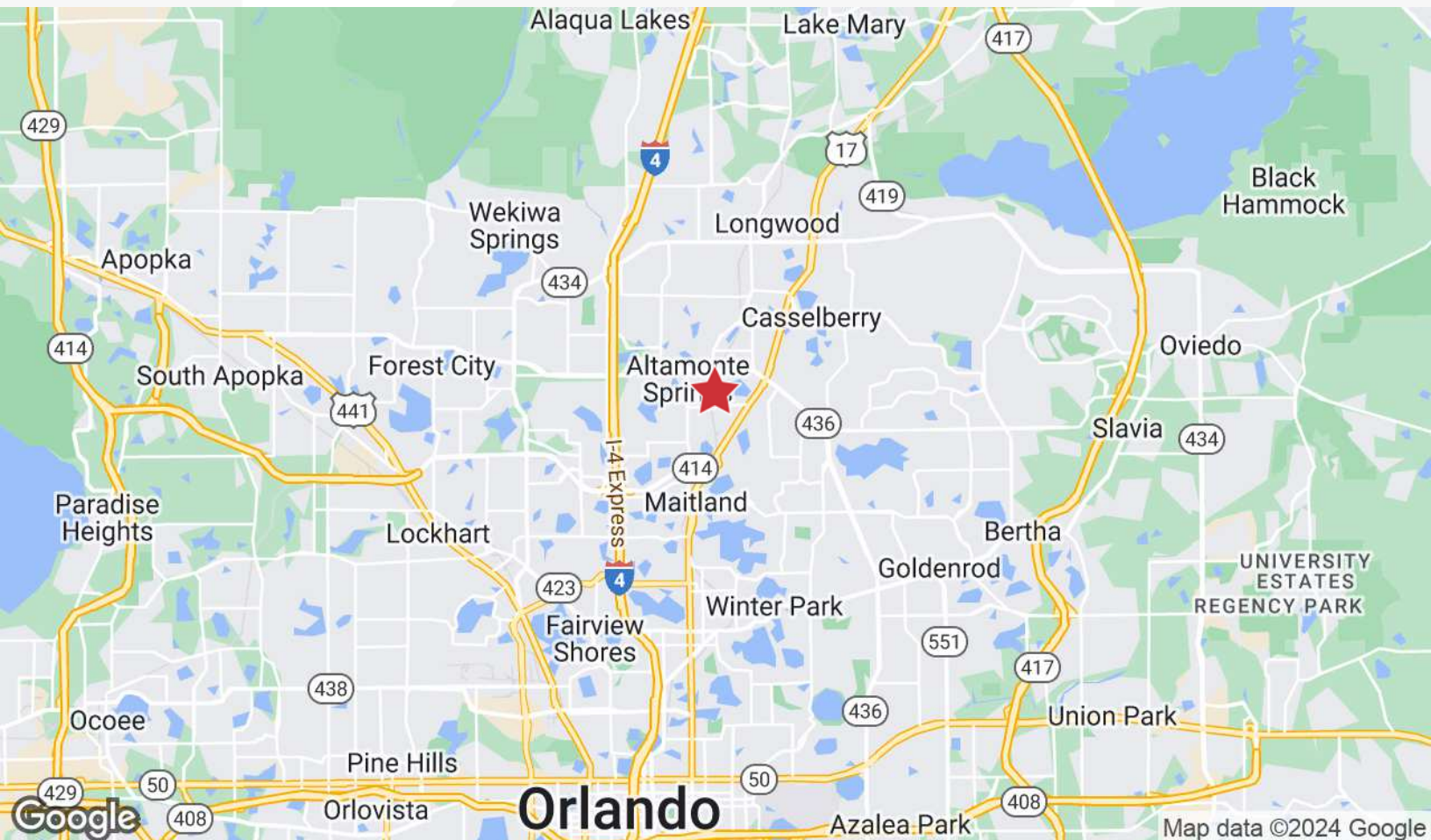
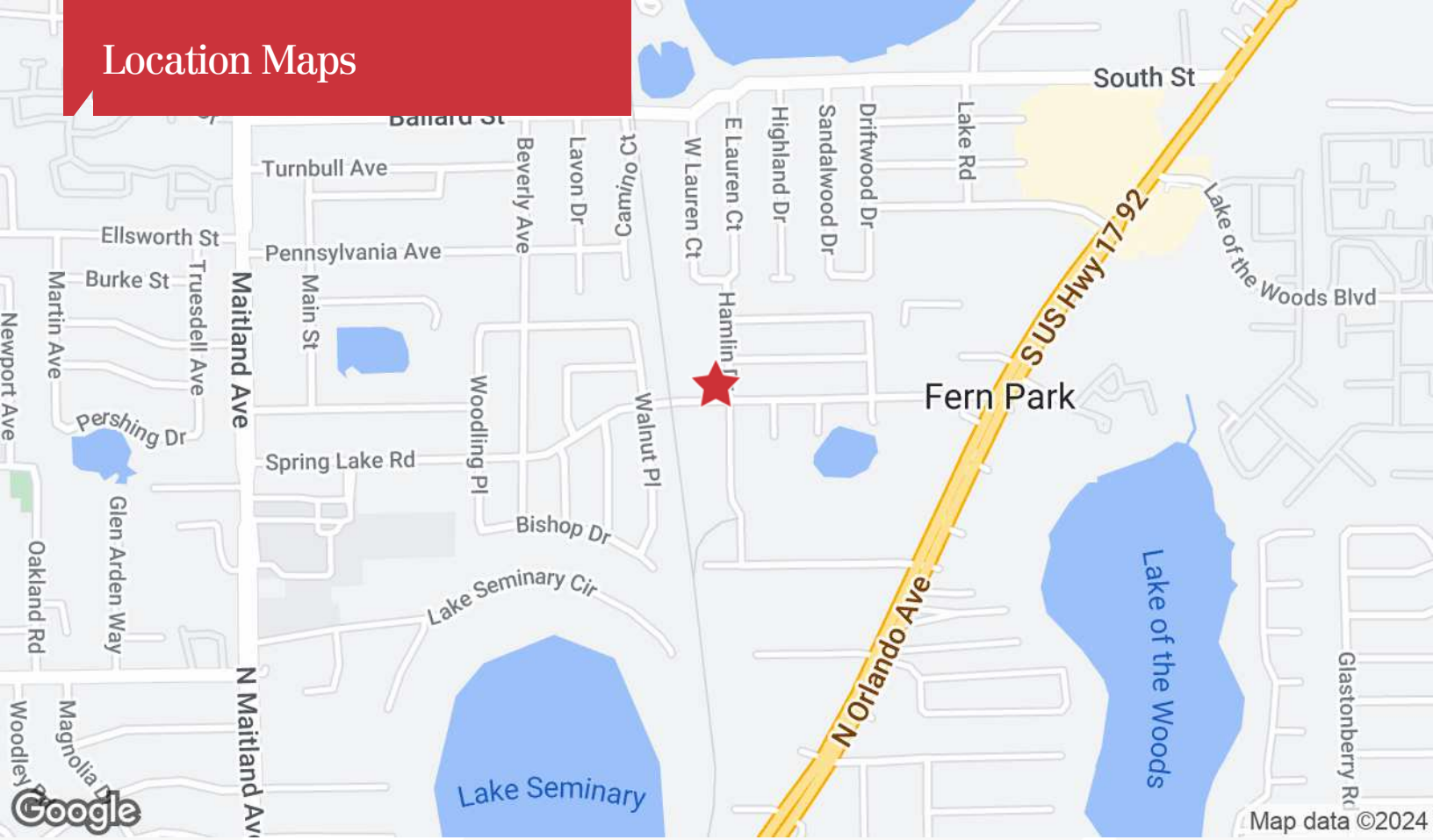
Property Photos



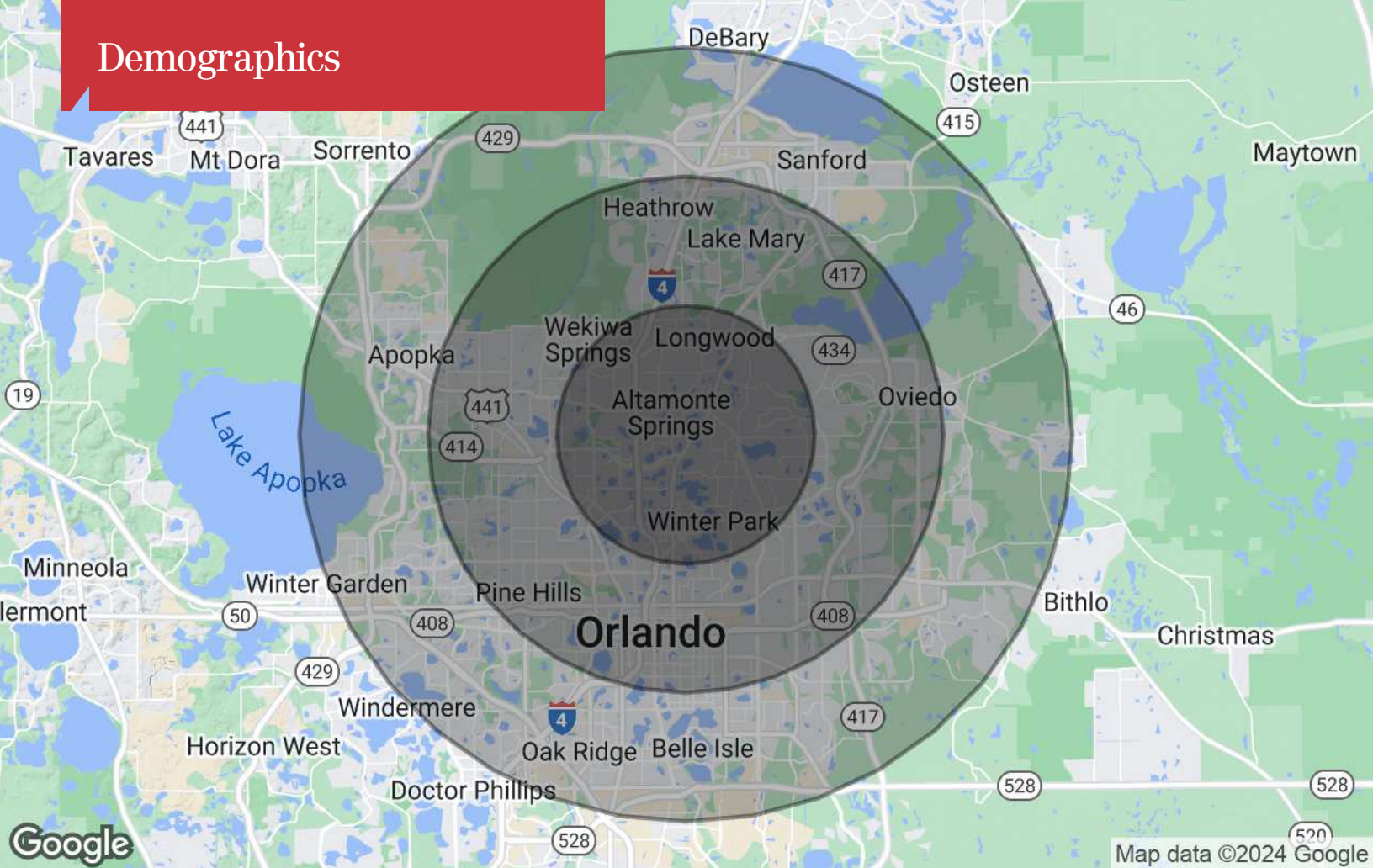
Aerials



Location Maps



Demographics



Population

	5 Miles	10 Miles	15 Miles
TOTAL POPULATION	256,604	878,485	1,502,525
MEDIAN AGE	40.7	38.1	37.5
MEDIAN AGE (MALE)	39.4	36.8	36.2
MEDIAN AGE (FEMALE)	42.6	39.7	38.9

Households & Income

	5 Miles	10 Miles	15 Miles
TOTAL HOUSEHOLDS	116,668	363,577	599,704
# OF PERSONS PER HH	2.2	2.4	2.5
AVERAGE HH INCOME	\$78,669	\$76,497	\$75,157
AVERAGE HOUSE VALUE	\$260,162	\$245,163	\$236,286

* Demographic data derived from 2020 ACS - US Census