

8000  
8000

3P  
ARCHITECT  
3209 RIDGE LAKE DR. METARE, LA.  
JAMES M. MONTGOMERY CONSULTING ENGINEERS, INC.

PROJECT: LEW. TENANT SPACE FOR  
DATE: 4.11.88  
DRAWN BY:  
REVISION NO:

PAGE: A-1  
JOB NO.  
DATE: 4.11.88  
DRAWN BY:  
REVISION NO:

LEGIBLE 8718 SF.

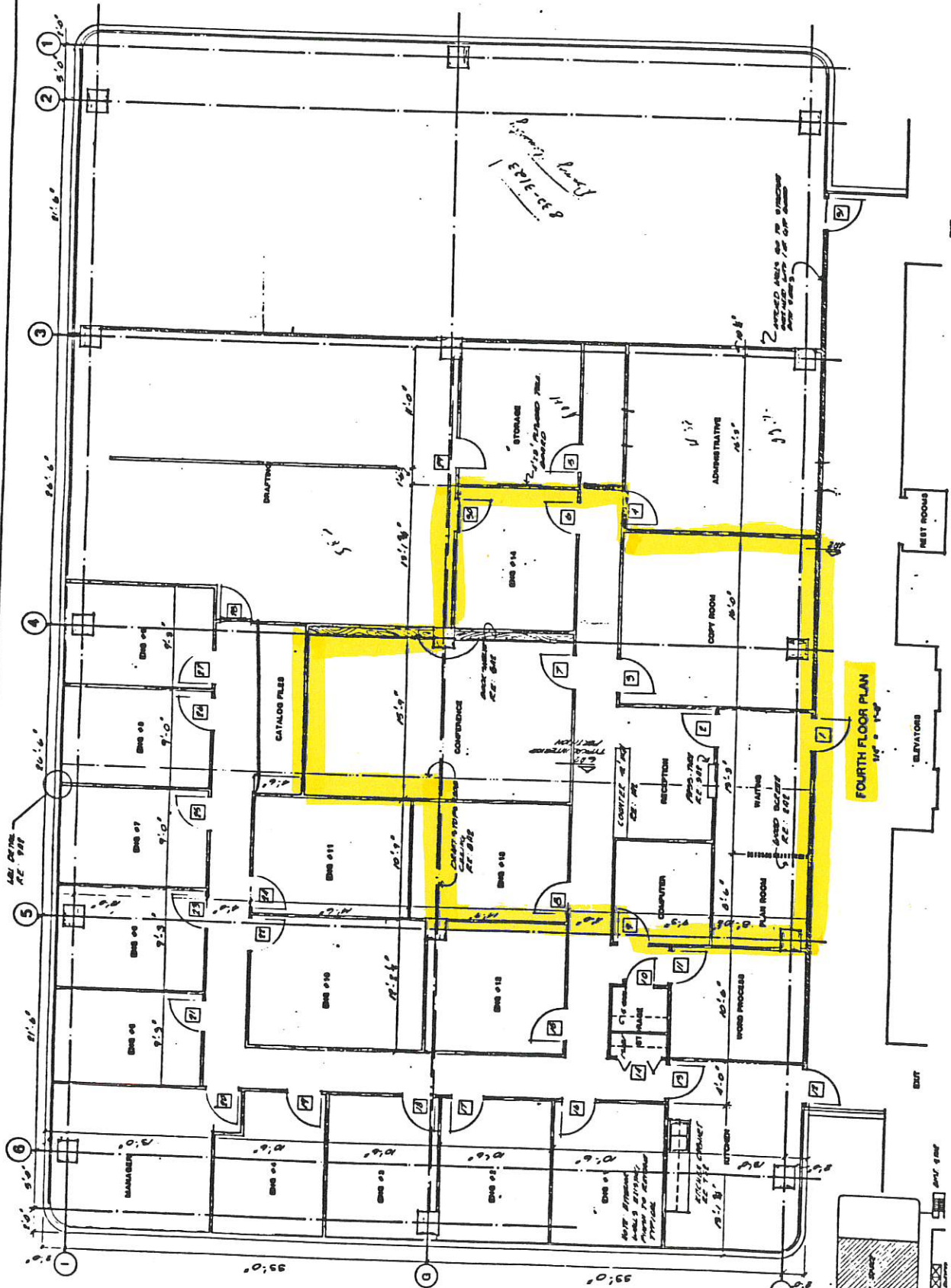


EXHIBIT A

KEY PLAN  
3209

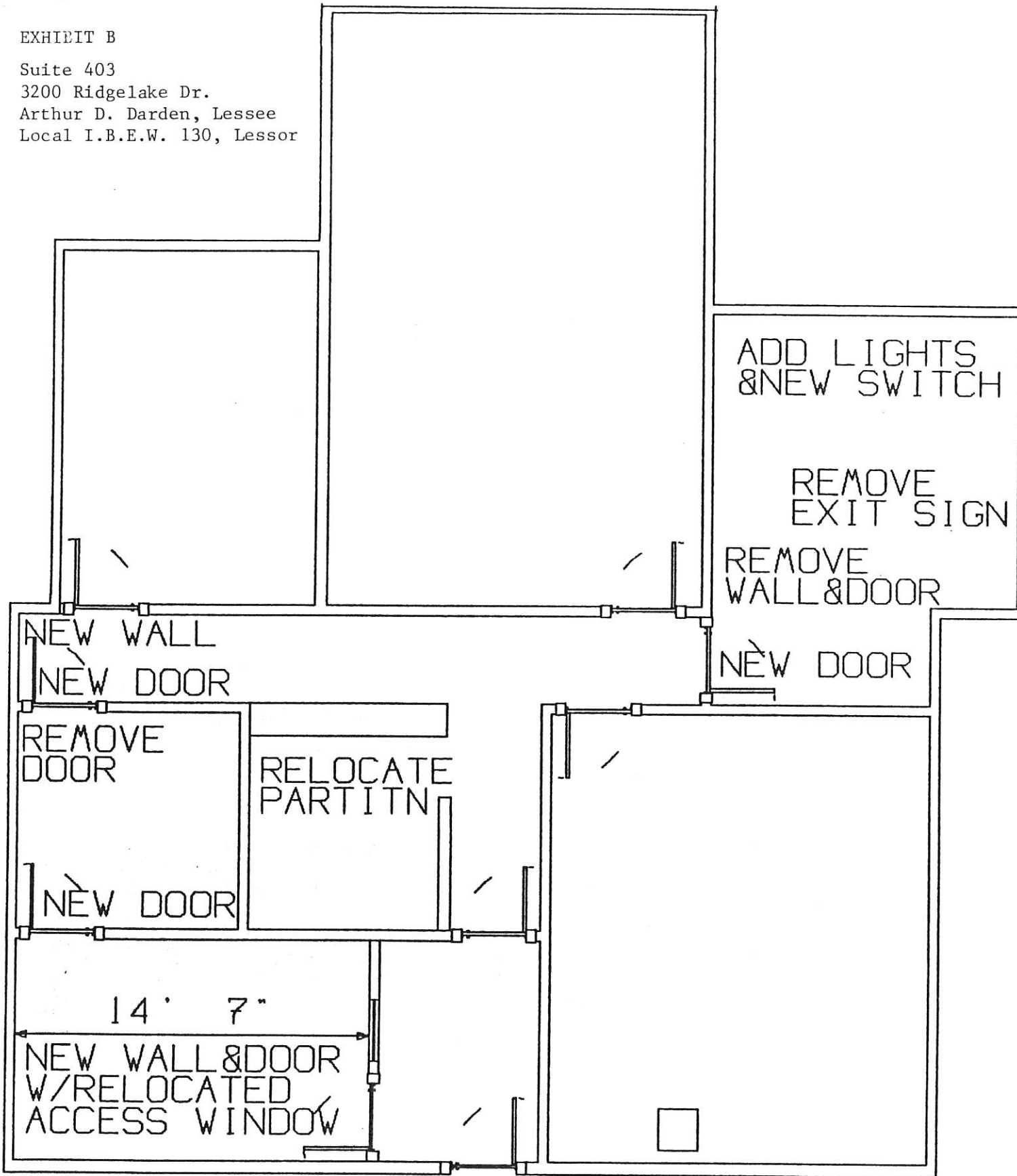
EXHIBIT B

Suite 403

3200 Ridgelake Dr.

Arthur D. Darden, Lessee

Local I.B.E.W. 130, Lessor



3200 RIDGELAKE DR. SUITE 403

db  
[Signature]