

**FOR LEASE**

Owned and Operated by



# LeeVista Business Center - Bldg F

7433 Emerald Dunes Drive, Orlando, FL 32822

## 39,300 SF



### LEASING INFO & CONTACT

**Tim Perry, CCIM, SIOR**

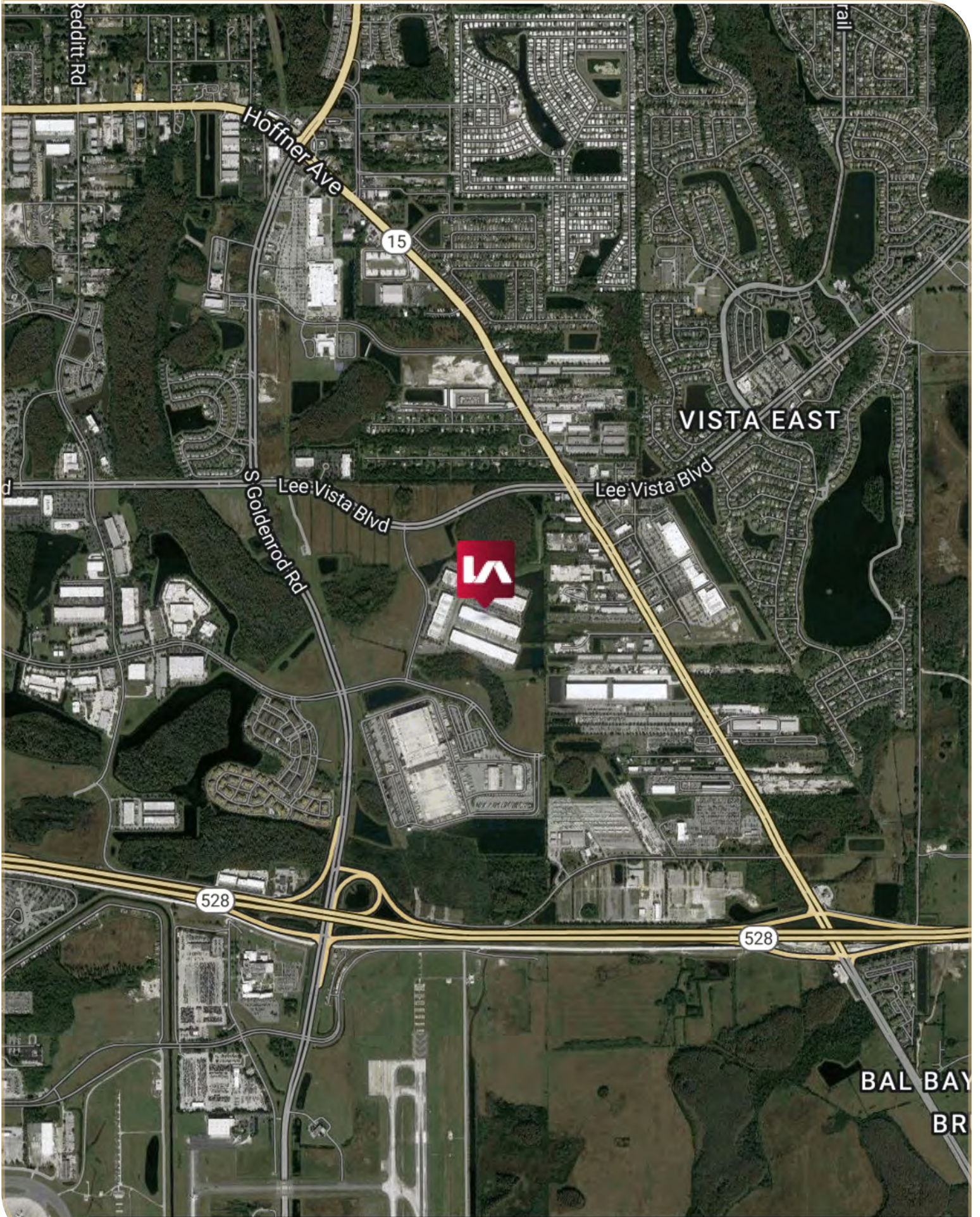
321.281.8515 / [tperry@lee-associates.com](mailto:tperry@lee-associates.com)

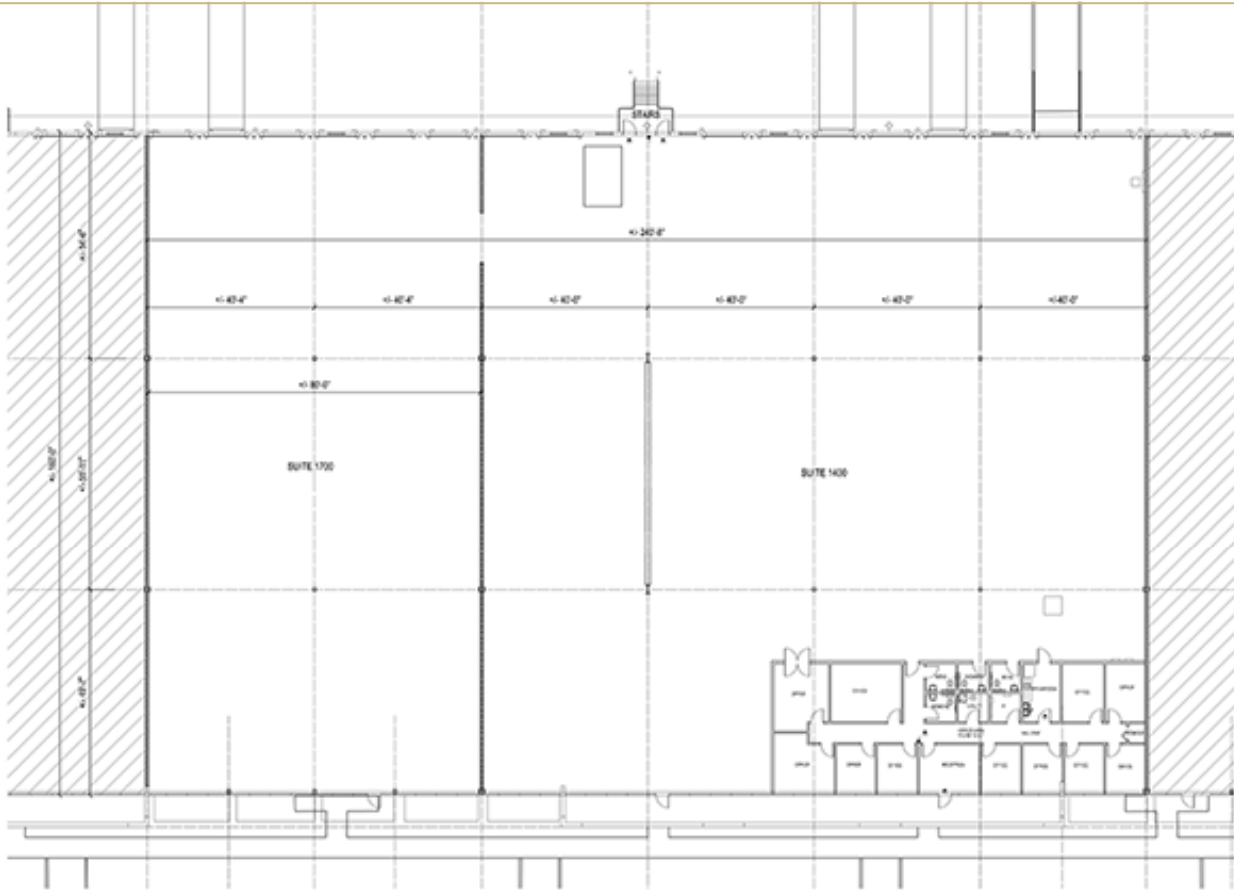
**Bo Bradford, CCIM, SIOR**

321.281.8502 / [bbradford@lee-associates.com](mailto:bbradford@lee-associates.com)



This is not an offer or acceptance of an offer to lease space. A lease will only be offered or made in a written agreement signed by landlord. No representation or warranty of any kind is made by landlord unless set forth in a written definitive lease executed by the landlord.





### BUILDING DATA

<b>Building SF:</b>	145,800 SF
<b>Clear Height:</b>	30'
<b>Column Spacing:</b>	40' W x 50' D
<b>Building Depth:</b>	160'
<b>Truck Court:</b>	200' including a 60' concrete apron
<b>Available:</b>	July 1, 2024

### LISTING DATA

<b>Available SF:</b>	39,300 SF
<b>Office SF:</b>	2,912 SF
<b>Doors:</b>	15 Dock High Doors and 1 Ramp to Grade Level Five (5) Edge of Docks (EODs)
<b>Lease Rate:</b>	\$11.50/SF NNN
<b>Op Ex:</b>	\$3.42/SF