

NARCOOSSEE LOGISTICS CENTER

7606 NARCOOSSEE RD, ORLANDO, FLORIDA 32822

SECURED OUTSIDE STORAGE

CONVENIENT ACCESS
TO SR 528 AND SR-417

**54,449 SF AVAILABLE
FOR SUBLEASE**

SPACE HIGHLIGHTS

ASKING RATE

NEGOTIABLE

LEASE EXPIRATION

APRIL 30, 2027

ZONING

IND-1

WAREHOUSE SF

52,478 SF

OFFICE SF

1,971 SF

CLEAR HEIGHT

28'-32'

LOADING DOORS

(14) DOCK DOORS
(1) DRIVE-IN W/ RAMP

PARKING RATIO

1.27/1,000

AVAILABILITY

30 DAYS

YEAR BUILT

2021

CONTACT INFORMATION



SEAN D. KROPKE

Executive Director
+1 312 424 8284
sean.kropke@cushwake.com

DAVID PEREZ

Executive Managing Director
+1 407 541 4435
david.perez@cushwake.com

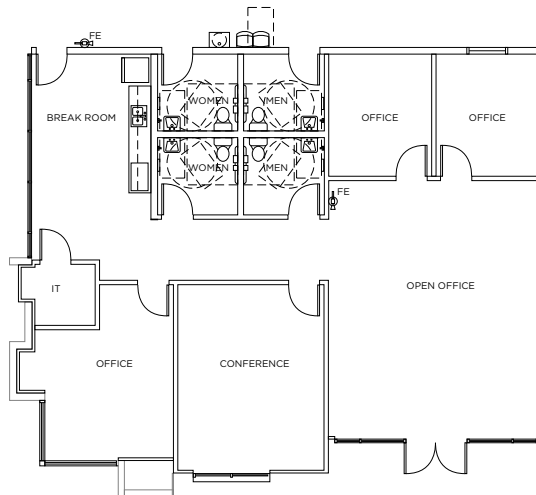
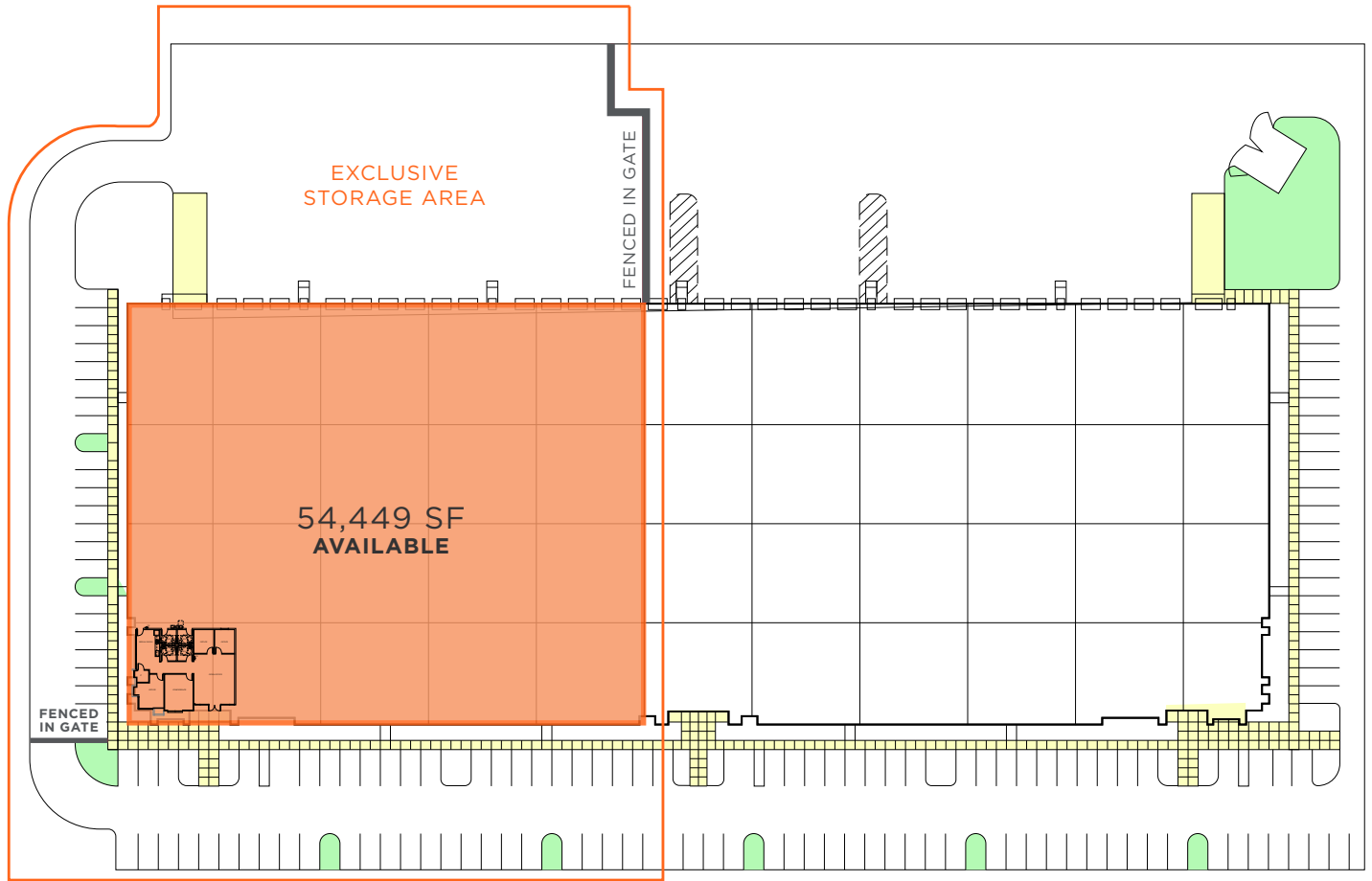
TAYLOR ZAMBITO

Senior Director
+1 407 541 4409
taylor.zambito@cushwake.com

RYAN HUBBARD

Director
+1 407 541 4390
ryan.hubbard@cushwake.com

SITE LAYOUT
7606 NARCOOSSEE RD



CONTACT INFORMATION



SEAN D. KROPKE
Executive Director
+1 312 424 8284
sean.kropke@cushwake.com

DAVID PEREZ
Executive Managing Director
+1 407 541 4435
david.perez@cushwake.com

TAYLOR ZAMBITO
Senior Director
+1 407 541 4409
taylor.zambito@cushwake.com

RYAN HUBBARD
Director
+1 407 541 4390
ryan.hubbard@cushwake.com