



JOHN STANLEY  
&  
ASSOCIATES

COMMERCIAL REAL ESTATE



**101 Bell Road  
Montgomery, AL 36117**

**FOR LEASE**

- **Lease Price:** Building #1 - \$7.00/S.F.  
Building #2 - \$6.00/S.F.
- **Building Area:** Building #1 - ± 16,224 S.F.  
Building #2 - ± 24,640 S.F.
- **Land Area:** ± 3.25 Acres
- **Zoning:** B-3
- **Parking:** 192 Spaces
- **Best Use:** Office, Business, School
- **Visibility:** Excellent
- **Possession:** Immediate
- **Listing Type:** Exclusive

Excellent buildings located in East Montgomery with office and warehouse space now available For Lease. Buildings can be leased all together or separately. Great location with easy access to all of Montgomery. Call for a tour! Contact Lee Meriwether, CCIM, for more information at (334) 398-1808.



**Lee W. Meriwether, CCIM**  
John Stanley & Associates, Inc.  
4747 Woodmere Boulevard  
Montgomery, AL 36106  
(334) 271-2475 voice  
(334) 271-2421 fax  
(334) 398-1808 cell  
[lmeriwether@johnstanleyassociates.com](mailto:lmeriwether@johnstanleyassociates.com)  
[www.johnstanleyassociates.com](http://www.johnstanleyassociates.com)



All information is from sources deemed reliable, but no warranty is made as to the accuracy thereof and same is submitted subject to errors, omissions, change of price, or other conditions, such as prior sales or withdrawal without notice by John Stanley & Associates, Inc. or the Owner.

**BUILDING I - BACK**



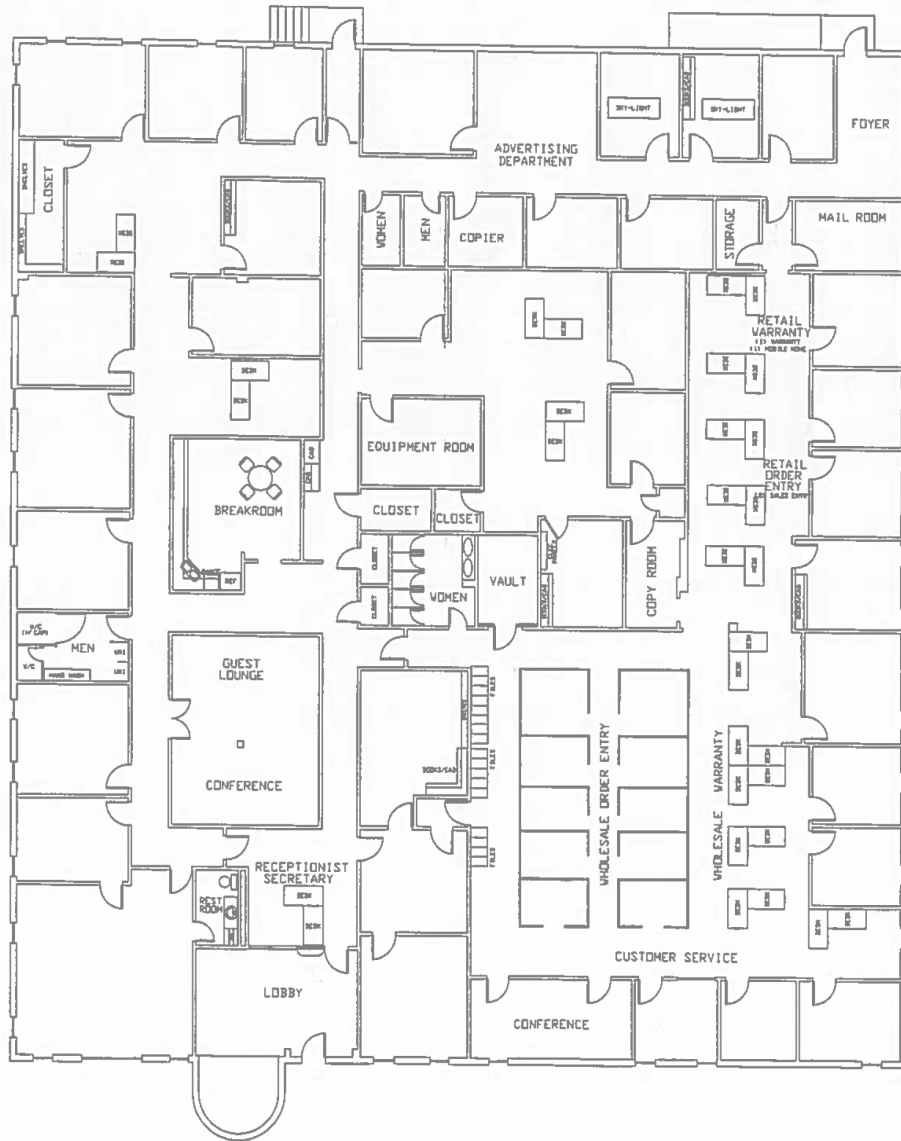
**BUILDING II - FRONT**







# BUILDING I



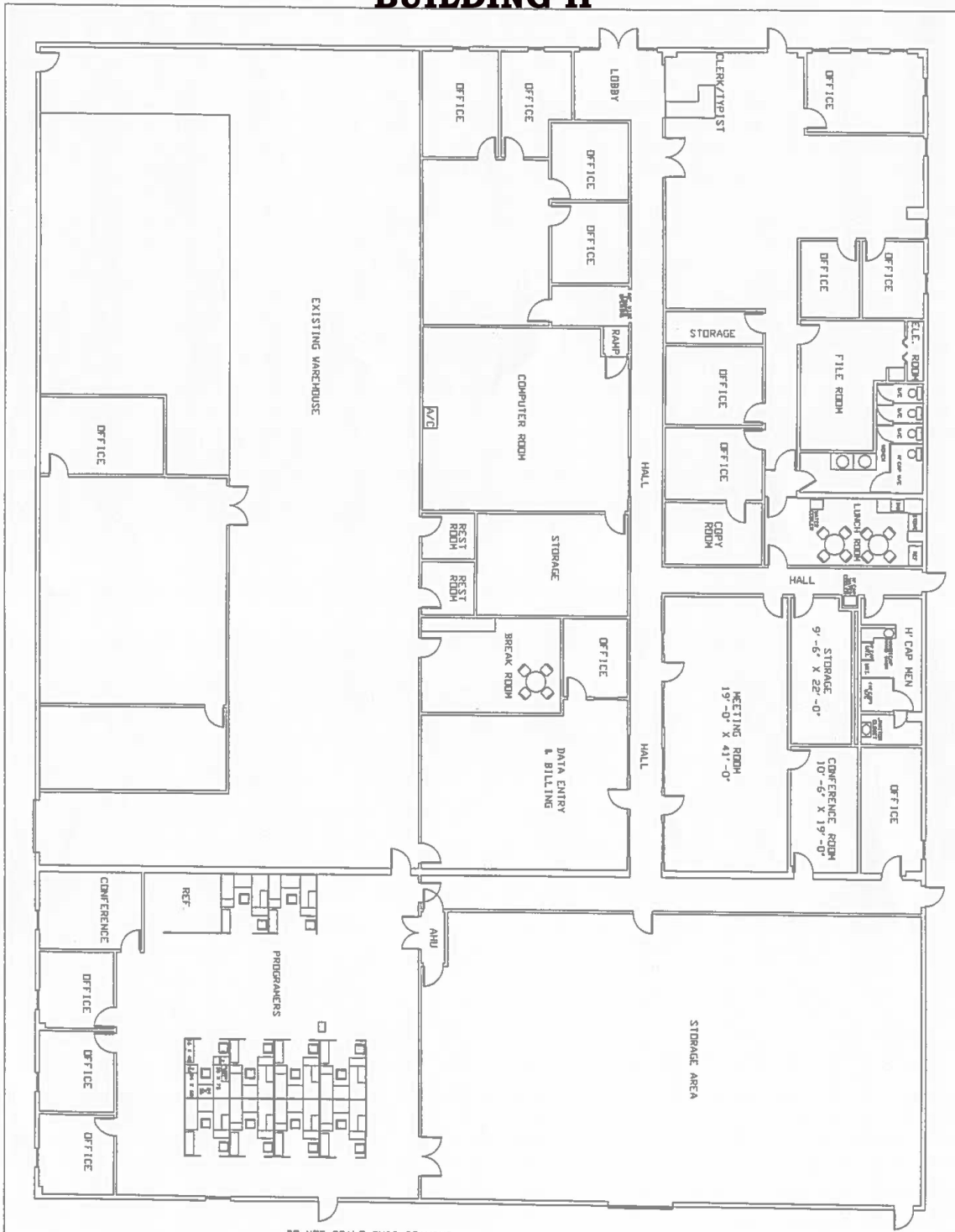
DO NOT SCALE THIS DRAWING

BELL ROAD BUILDING 1

<b>Design Engineering Department</b> MONTGOMERY, ALABAMA		REV. NO.	DATE
	DATE: MARCH 31, 1997	SCALE: 1/8" = 1'-0"	SHEET 2 OF 2
DRW. BY:	CHKD. BY:	MB THEBELLS	
APPROVED:	REF DWG:	REVISION: 01	





# BUILDING II



DO NOT SCALE THIS DRAWING

## BELL ROAD BUILDING 2

 <b>Design Engineering Department</b> MONTGOMERY, ALABAMA				REV. NO.	DATE
DATE	MARCH 31, 1997	SCALE	1/8" = 1'-0"	SHEET	1 OF 2
DRW. BY		CHKD. BY		MB	THEBELLS
APPROVED		REF. ENG			

