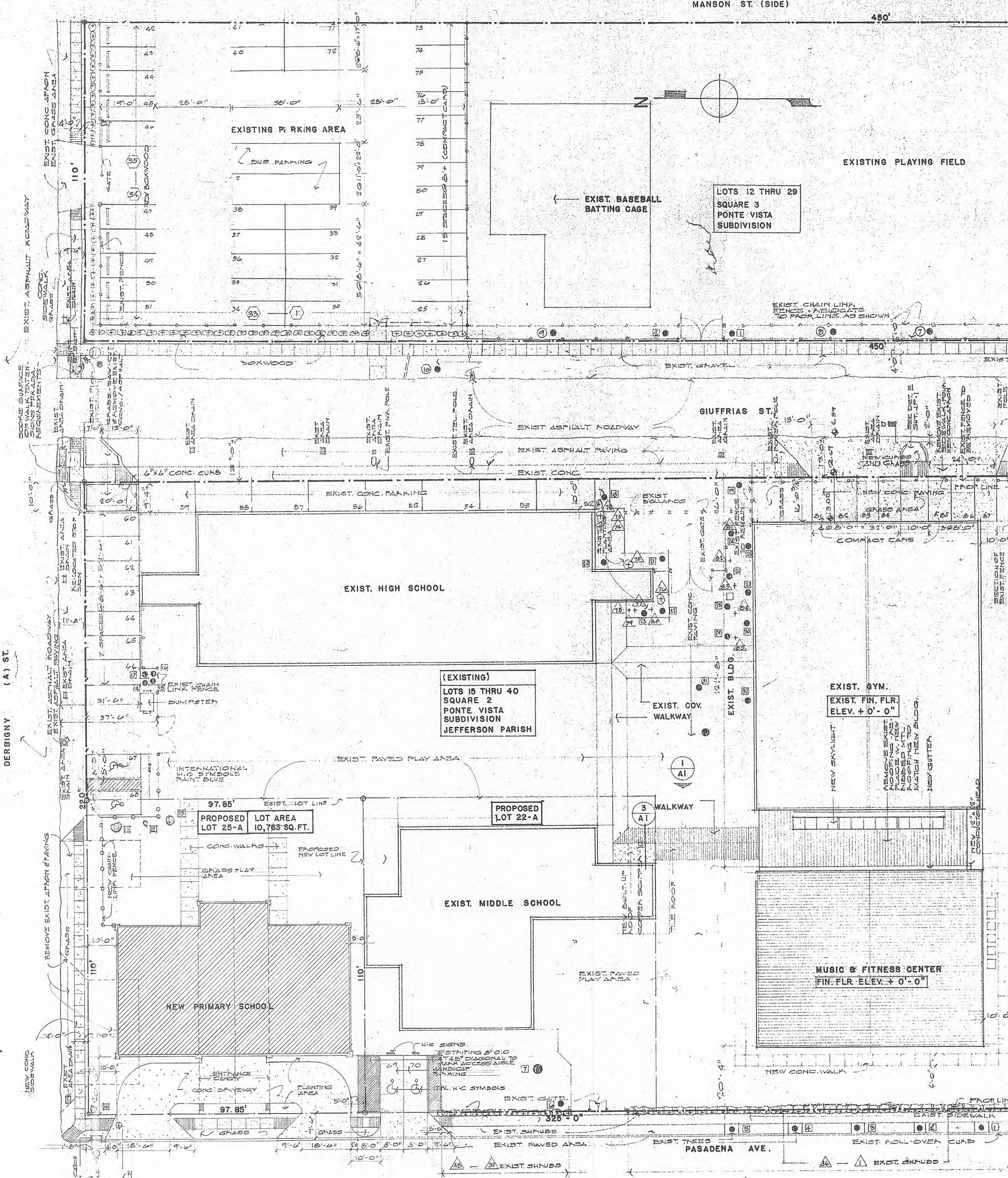


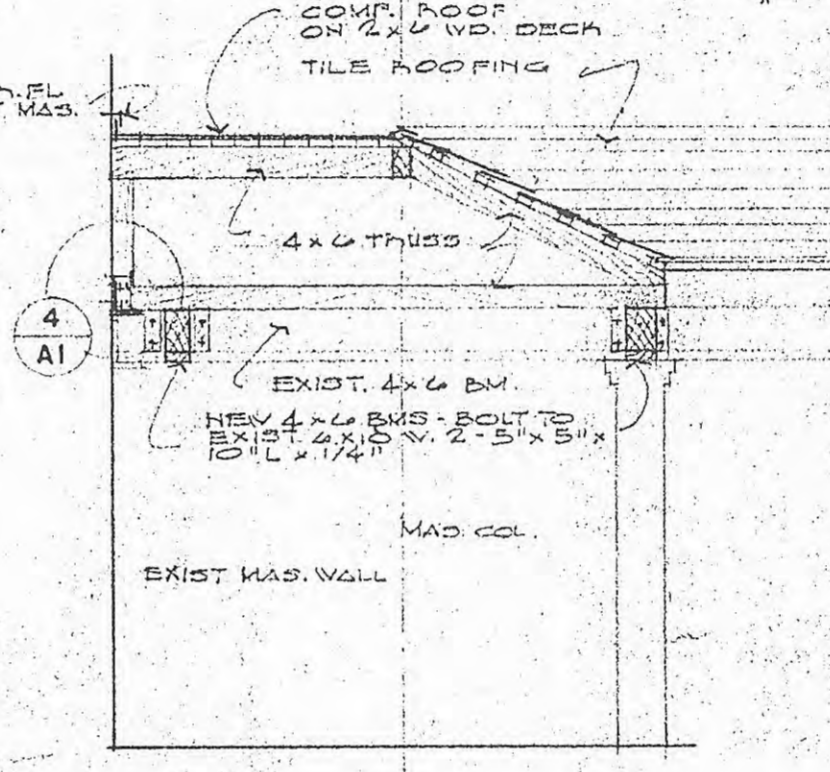
MANSON ST. (SIDE)

450'

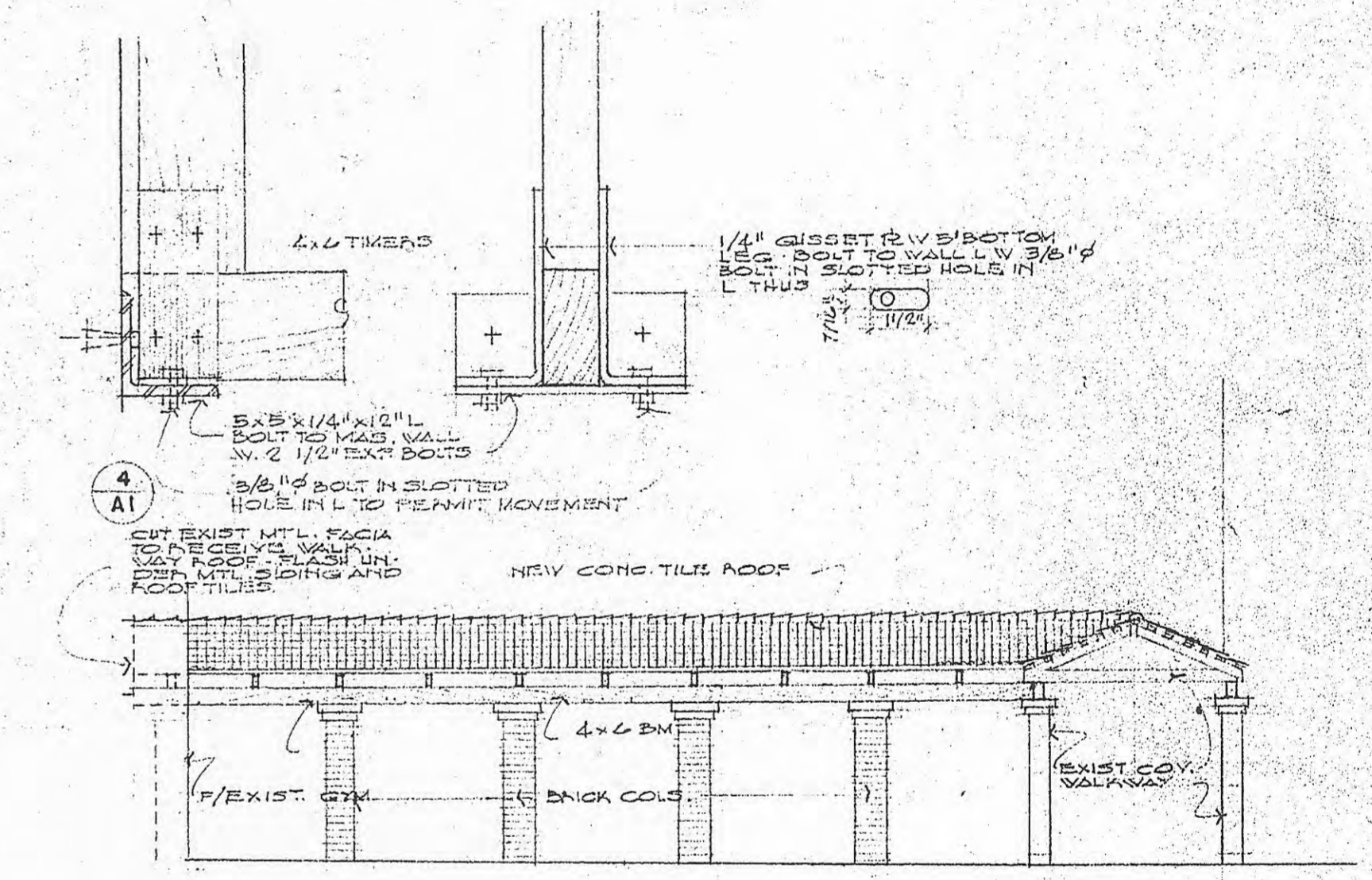


- NOTES**
- SEE SHEET UP-1 FOR ADDITIONAL NOTES AND DETAILS ON PAVING, SIDEWALKS, DRIVEWAYS, ETC. FOR DRAINAGE DETAILS SEE SHEET UP-1
  - TACTILE PAVING SURFACE - PROVIDE AT ALL CROSSING POINTS OF DRIVEWAYS, SIDEWALKS AND AT STREET CORNERS AS SHOWN.
  - FIN. ELEV. UNLESS NOTED OTHERWISE ALL ELEV. NAVD.
  - RAISE ALL EXIST. BASIN INLET COVERTS OCCUPYING IN NEW DRIVEWAY AT POINT TO NEW DRIVEWAY ELEVATION.

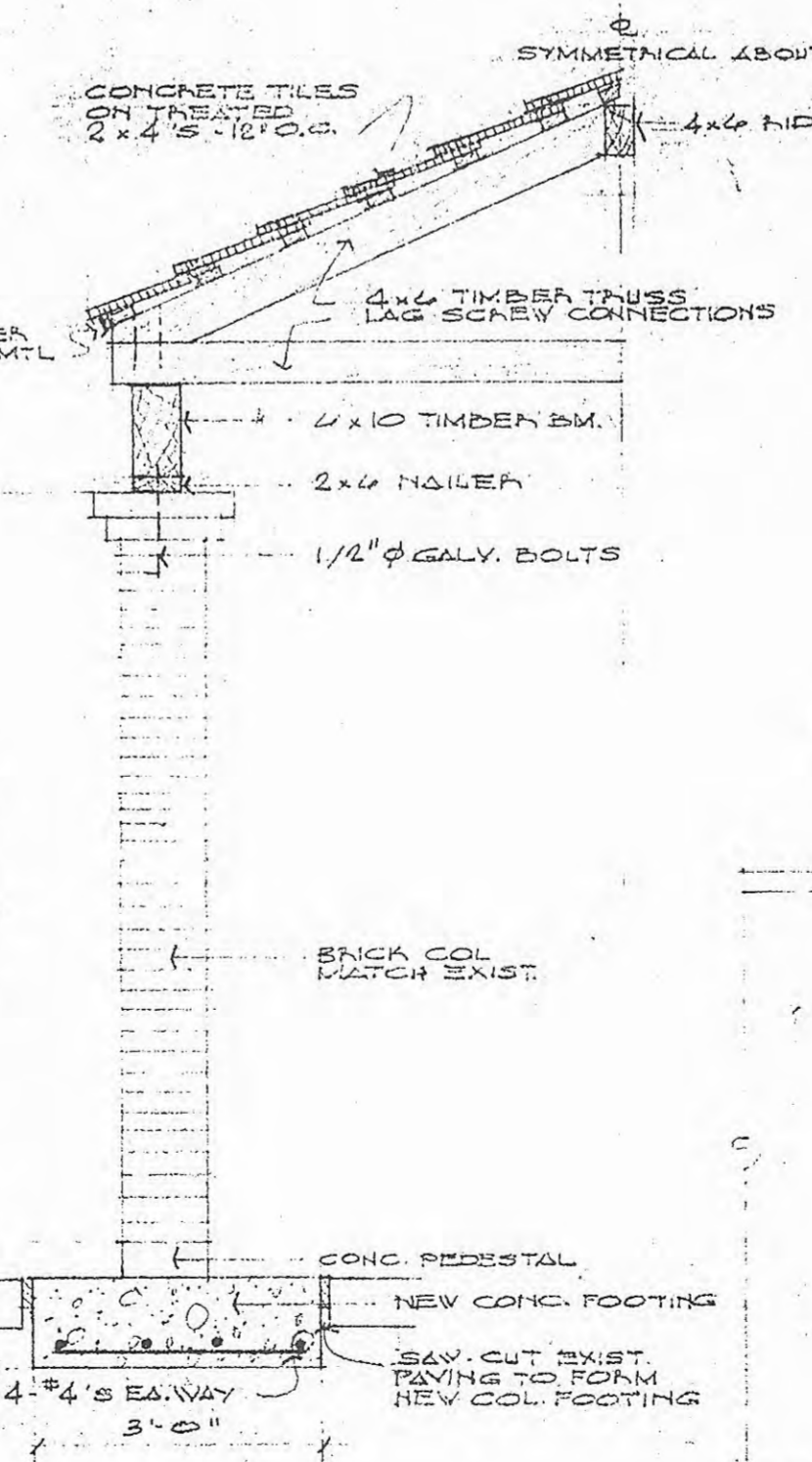
- LANDSCAPING NOTES**
- TREE NUMBER
  - NEW TREES: NOS. 10 AND 11 - BRADFORD PEAR ALL OTHERS BALD CYPRESS
  - NEW SHRUBS: ALL BOXWOOD
  - EXISTING TREES
  - EXIST. SHRUBS



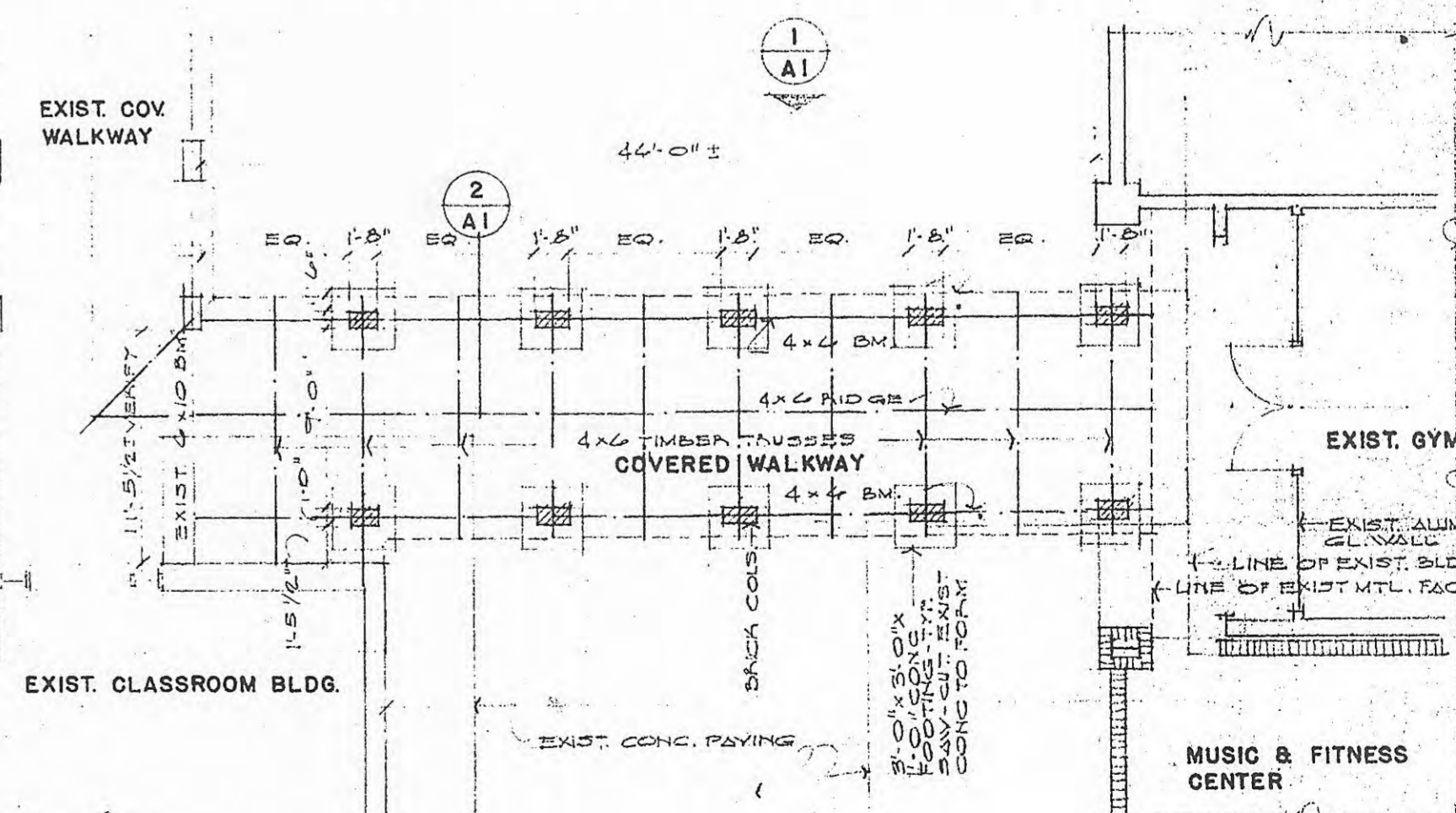
SECTION 1/4" = 1'-0"



ELEVATION 1/8" = 1'-0"



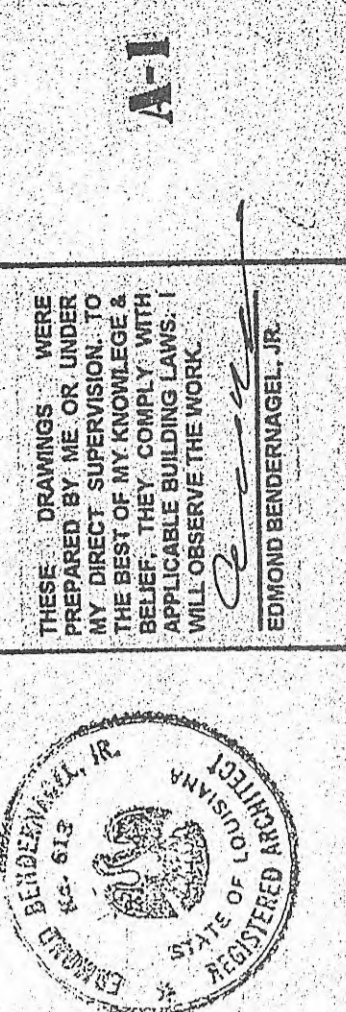
SECTION 1/2" = 1'-0"



PLAN 1/8" = 1'-0"

SITE PLAN 1" = 20'-0"

COVERED WALKWAY DETAILS



**RIDGEWOOD PREPARATORY SCHOOL**  
 Metairie, Louisiana  
 BENDERNAGEL ARCHITECTS, L.L.C.  
 New Orleans, Louisiana - 70118