

For Lease

# Retail/Office Center Under Construction

1,200 - 9,063 SF | \$35.00 / SF



## Morgan Commerce Center

981 Vineland Road, Winter Garden, Florida 34787

### Property Highlights

- New construction - estimated finish date - 3rd quarter 2024
- Pre-construction leasing rate
- Minimum unit size is 1,200 SF; up to 9,063 SF (entire building)
- Allows retail and office use; Ceiling height: 18 feet
- Parking 4/1000 SF
- Zoning: PCD - Planned Commercial Development (Orange County)
- Corner location allows for access from both Vineland Rd and Morgan Street
- Just 2 blocks north of Colonial Drive (SR 50)
- Surrounded by dense residential development



**Lease Rate: \$35.00 / SF NNN**

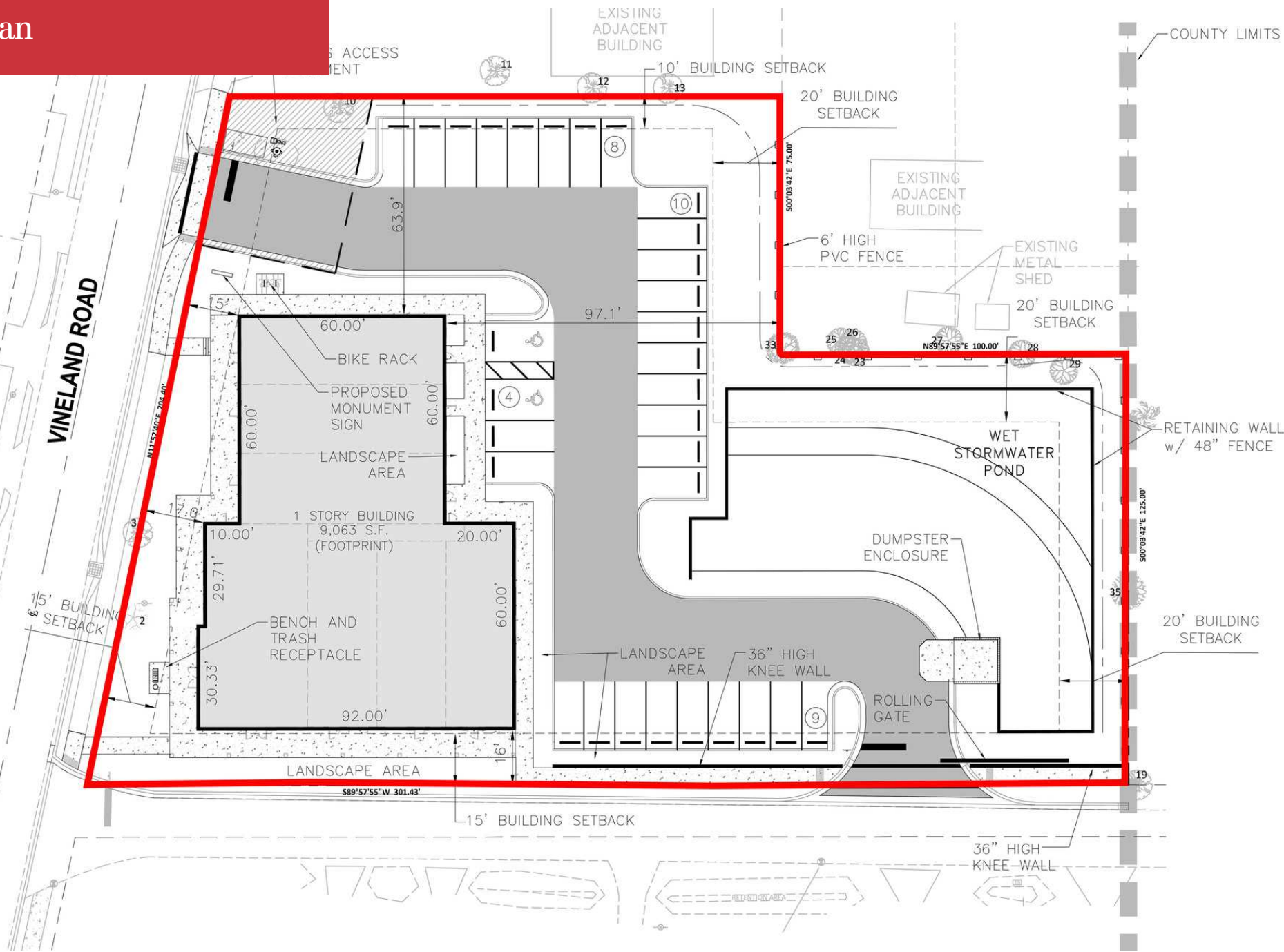
For more information

**Paul P. Partyka, CCIM, MiCP, CIPS**

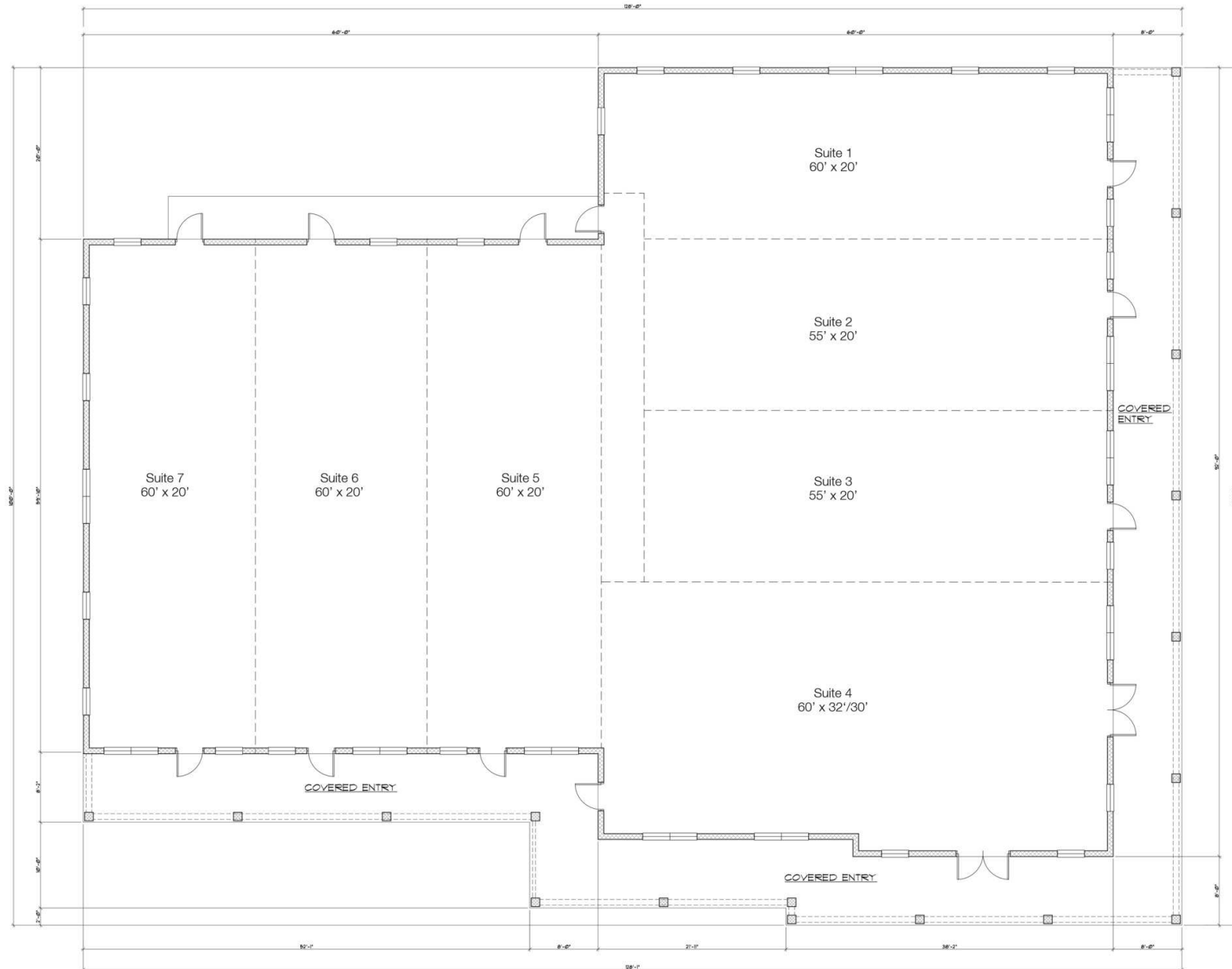
O: 407 949 0758

ppartyka@realvest.com

# Site Plan



# Floor Plan



# Location Maps

