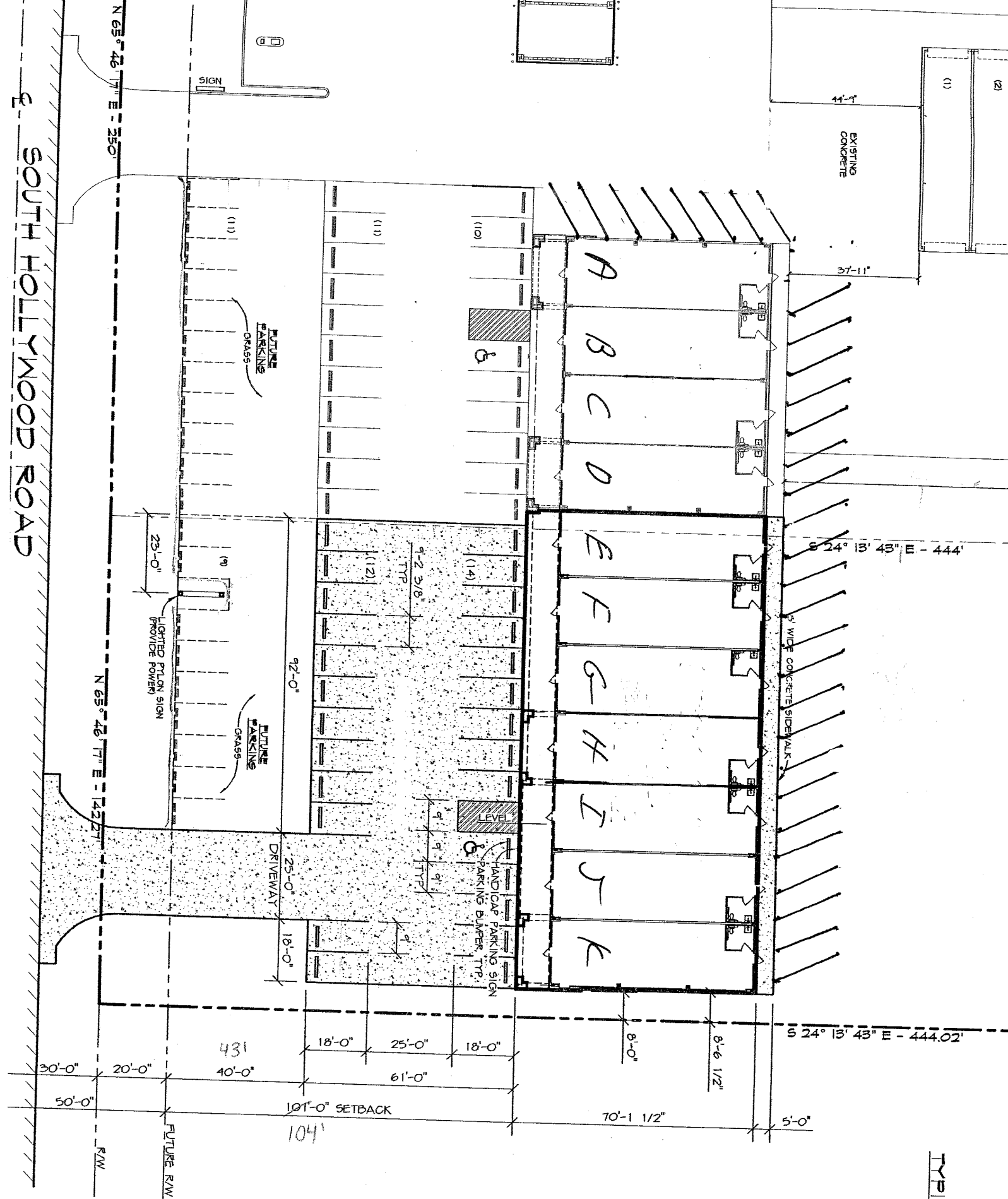


SOUTH HOLLYWOOD ROAD

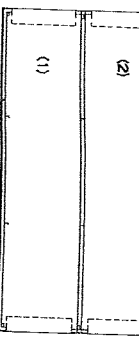
N 65° 46' E - 250'

N 65° 46' E - 142.27'



PARCEL C-1-4

TYPICAL HANDICAP PARKING SIGN



EXISTING CONCRETE

37'-11"

S 24° 15' 43" E - 444'

6" WIDE CONCRETE SIDEWALK

S 24° 15' 43" E - 444.02'

(11)

(10)

FUTURE PARKING GRASS

FUTURE PARKING GRASS

LIGHTED Pylon SIGN (PROVIDE POWER)

HANDICAP PARKING SIGN PARKING BUMPER, TYP.

431
40'-0"

101'-0" SETBACK
104'

70'-1 1/2"

8'-6 1/2"

5'-0"

R/W

FUTURE R/W

DRIVEWAY

9'-2 3/8" TYP.

9" TYP.

9" TYP.

(14)

(12)

(11)

30'-0"

20'-0"

18'-0"

25'-0"

18'-0"

61'-0"

8'-0"

8'-6 1/2"

8'-0"

8'-6 1/2"

8'-0"

8'-6 1/2"

8'-0"

8'-6 1/2"

8'-0"

8'-6 1/2"

23'-0"

92'-0"

25'-0"

18'-0"

B

A

B

C

D

E

F

G

H

I

J

K

11'-7"

(1)

(2)

(1)

(2)

(1)

(2)

(1)

(2)

(1)

(2)

(1)

(2)

(1)

(2)

(1) HOUR FIRE RATED WALL FROM FLOOR TO UNDERSIDE OF FLOOR DECK. SEE DESIGN NO. U465 FOR DETAILS

Fire

0

X

C

