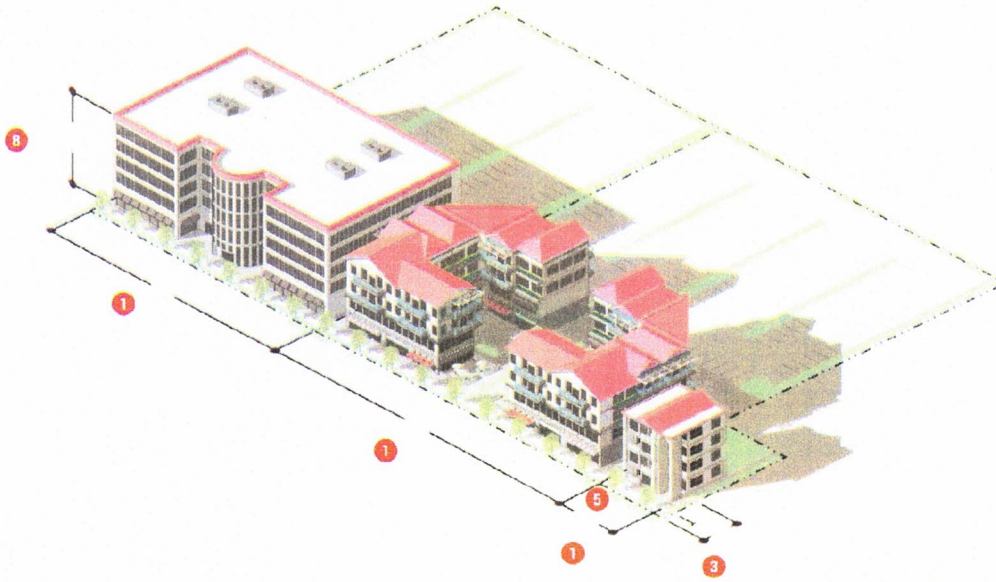


<p>Parking Structure</p>	<p>Where the street-level facade of a parking structure abuts or faces a pedestrian street frontage, the facade shall be articulated through use of at least three of the following features: (1) windows or window-shaped openings; (2) masonry columns; (3) decorative wall insets or projections; (4) awnings; (5) changes in color or texture of exterior materials; (6) integrated vegetation (hanging or along trellises); or (7) other similar features approved by the Director.</p>
--------------------------	--



E. Reference to Other Standards

Article 5: Development Standards

Section 5.1 Off-Street Parking, Bicycle Parking, and Loading Standards

Section 5.2 Landscaping and Buffer Standards

Section 5.3 Tree Protection Standards

Section 5.4 Open Space Set-Aside Standards

Section 5.5 Fences and Walls

Section 5.6 Exterior Lighting

Section 5.7 Development Design Guidelines

Section 5.8 Neighborhood Compatibility Standards

Section 5.9 Agricultural Compatibility Standards

Section 5.10 Signs

Section 5.11 Green Building Standards

Section 5.12 Green Building Incentives

Section 5.13 Roads, Streets, Sidewalks, and Bikeways

Section 5.14 Utilities

Section 5.15 Guarantees and Sureties

Section 5.16 Miscellaneous Standards

Article 6: Environmental Standards

Article 7: Concurrency Management System