

For Lease

SouthPark Center

8517 SouthPark Circle | Orlando, FL 32819



**AVISON
YOUNG**

Nathan Eissler, CCIM, SIOR

Principal

407.440.6658

nathan.eissler@avisonyoung.com



Introduction

This ±147,322 SF office building sits in SouthPark Center, a premier office park located in South Orlando. The property boasts the ideal location, benefiting from quick access to major thoroughfares and close proximity to popular attractions, shopping, and restaurants. Tenant amenities include outdoor patio seating, fitness center and nature trail access, a food truck court, and a Nature's Table Café in the adjacent building.

PROPERTY HIGHLIGHTS

**QUICK ACCESS TO
MAJOR ROADS**

**NATURE'S TABLE CAFE IN
ADJACENT BUILDING**

COVERED PARKING

CAR CHARGING STATIONS

**OUTDOOR PATIO SEATING
WITH GAMES**

**LYNX BUS STOP IN FRONT
OF BUILDING**

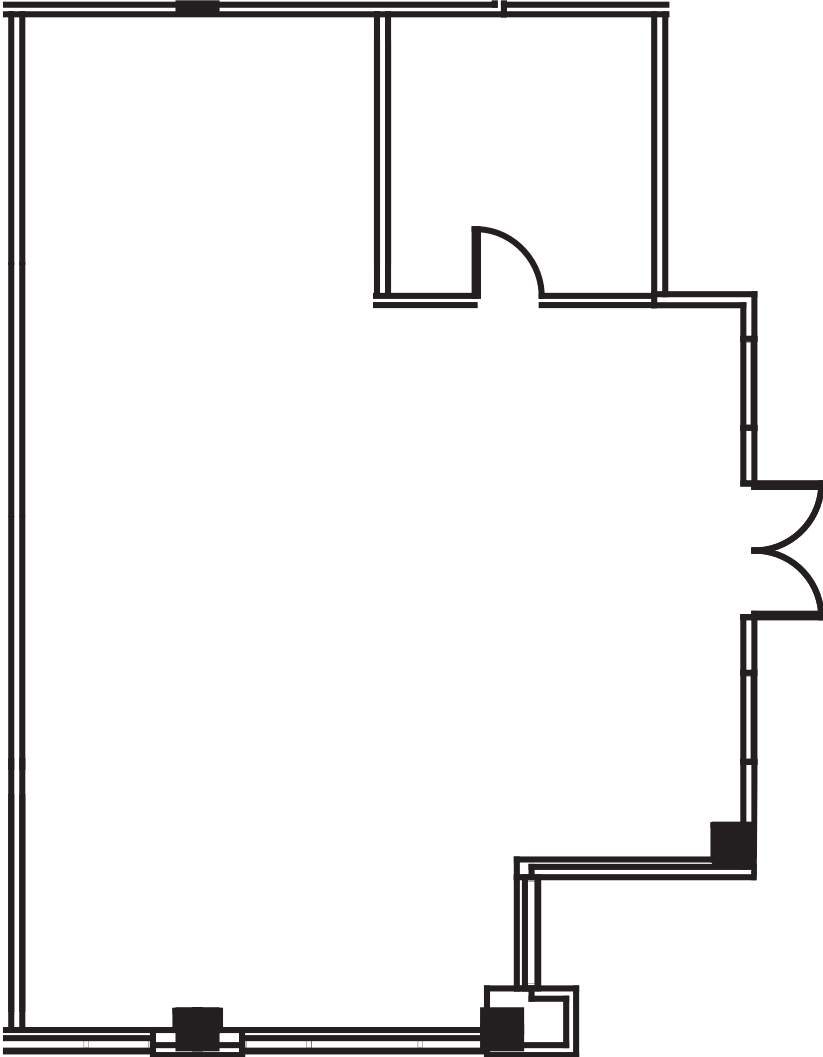
**FOOD TRUCK COURT WITH
SHADED SEATING**

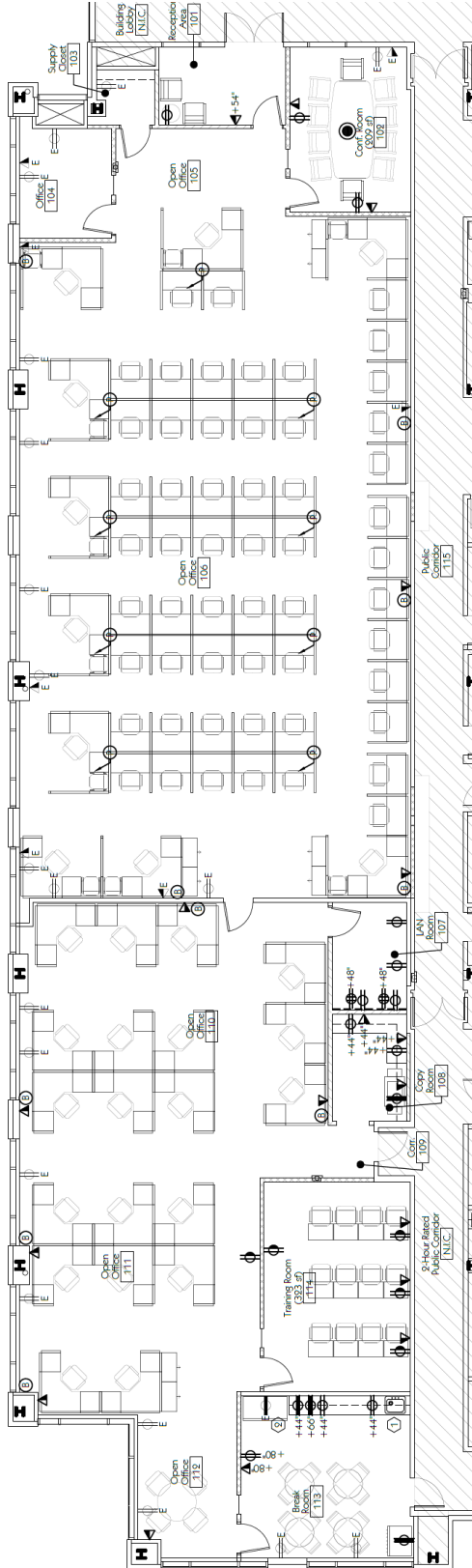
**FITNESS CENTER & NATURE
TRAIL ACCESS**

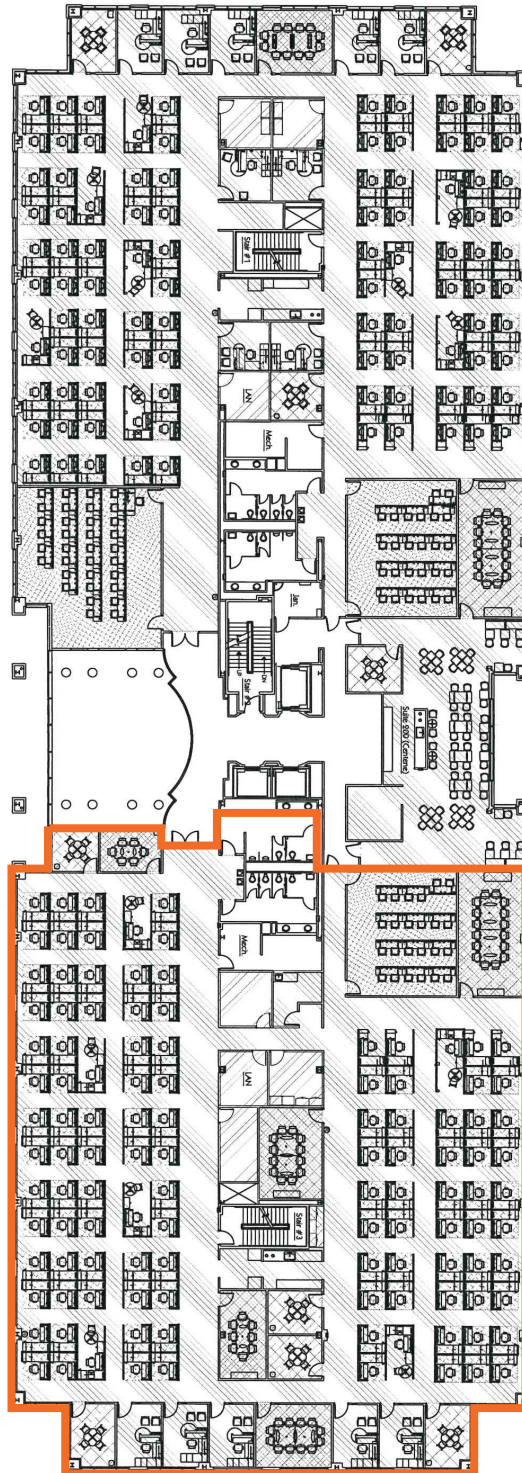
**5.5/1,000 SF
PARKING RATIO**

**ON-SITE PROPERTY
MANAGEMENT**









Location Map



Drive Time Demographics (15 Minutes)


344,587
Population


144,743
Households


\$100,604
Average HH income


2.34
Average HH size


250,136
Employees

**AVISON
YOUNG**

Nathan Eissler, CCIM, SIOR
Principal
407.440.6658
nathan.eissler@avisonyoung.com

**If you would like more information about this offering,
please get in touch.**

Leasing contacts

Nathan Eissler, CCIM, SIOR

Principal

407.440.6658

nathan.eissler@avisonyoung.com

Visit us online

avisonyoung.com

© 2024 Avison Young – Florida, LLC. All rights reserved.

E. & O.E.: The information contained herein was obtained from sources which we deem reliable and, while thought to be correct, is not guaranteed by Avison Young.

135 W. Central Blvd., Suite 700, Orlando, Florida | 407.440.6658

**AVISON
YOUNG**