

For Lease

1789 Benbow Ct.

Apopka, FL 32703

Property details

Small-bay warehouse space in Northwest Orlando available for lease. This ±2,000 sf space has one front loading 12' x 14' grade-level roll-up door. Located off of Orange Blossom Trail (US-441) and minutes away from Maitland Boulevard Extension (SR 414), Interstate-4, and Central Florida Expressway (SR 451), providing quick access to all major Central Florida markets.

Asking Rate: Negotiable
2024 Est. CAM: \$3.20 PSF

Property Stats

Available SF	2,000± sf
Roll-up door	12' x 14'
Clear height	18' - 20'
Zoning	I-L - City of Apopka
Parking	3.00/1,000 sf
TI	Tenant improvement allowance available

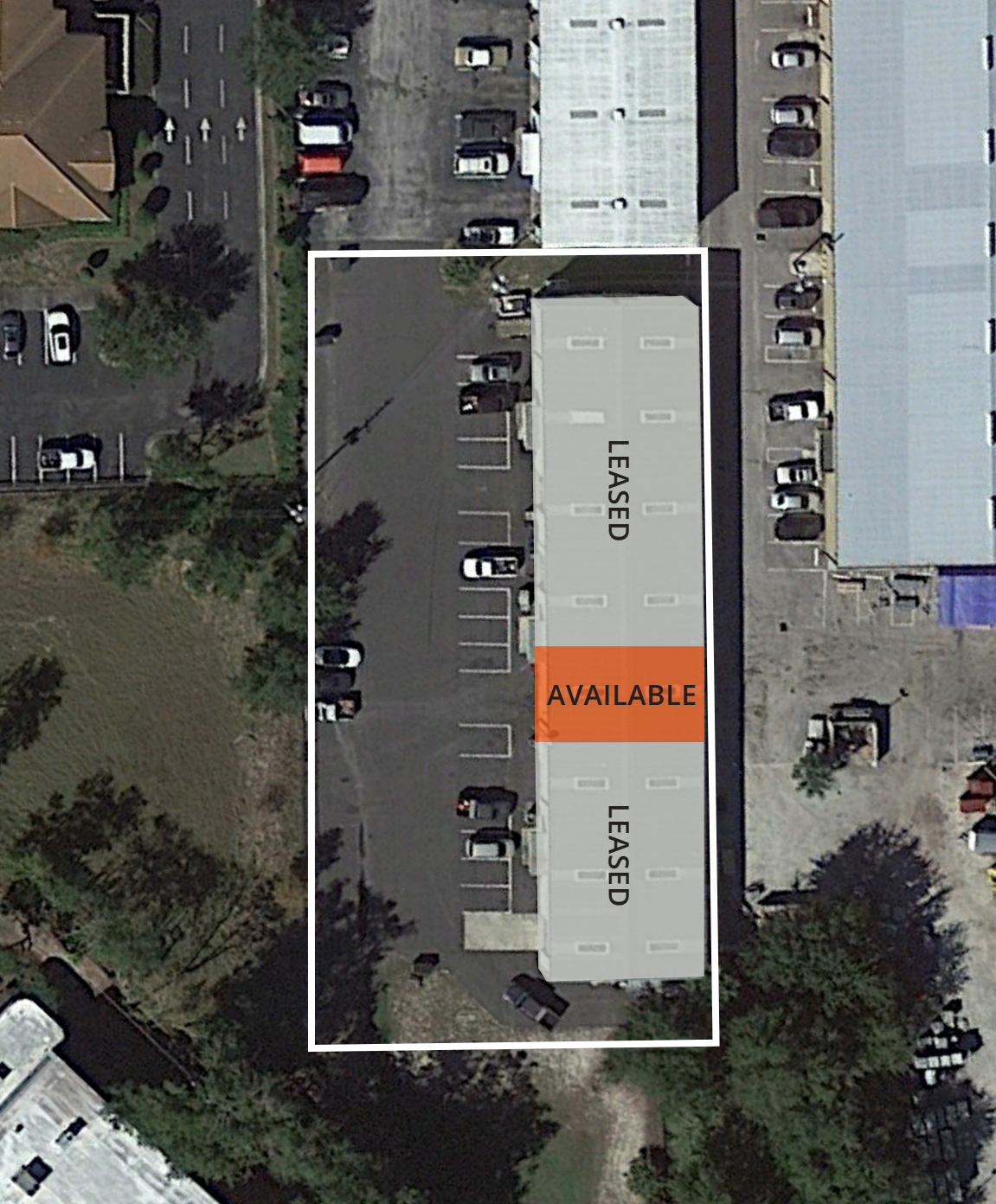


**For further
information**

Gunner Leslie
Vice President
+1 407 440 6642
gunner.leslie@avisonyoung.com

Nathan Eissler
Principal
+1 407 440 6658
nathan.eissler@avisonyoung.com

avisonyoung.com



**For further
information**

Gunner Leslie
Vice President
+1 407 440 6642
gunner.leslie@avisonyoung.com

Nathan Eissler
Principal
+1 407 440 6658
nathan.eissler@avisonyoung.com

avisonyoung.com

5 Mile Demographics

233,295

Population

\$87,063

Average HH income

\$3.8B

Total consumer spending

9,208

Total businesses



Drive Time Estimate

Downtown Orlando 18 min

Altamonte Springs 20 min

Winter Garden 20 min

Mount Dora 25 min

Sanford 35 min

For further information

Gunner Leslie

Vice President

+1 407 440 6642

gunner.leslie@avisonyoung.com

Nathan Eissler

Principal

+1 407 440 6658

nathan.eissler@avisonyoung.com

avisonyoung.com