

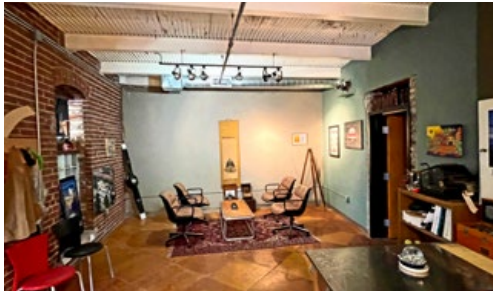
THE LAST GREAT PIECE OF THE BELTLINE



FOR SALE
116 Krog Street: ± 5,371 GSF

JEFF POLLOCK, CCIM, SIOR
JP@POLLOCKCOMMERCIAL.COM
404.662.2182

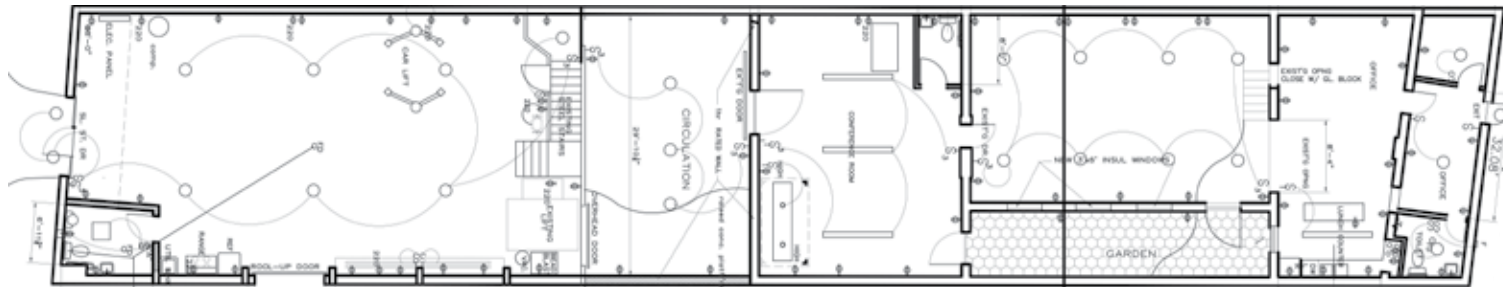




SPACE HIGHLIGHTS

- Fronts both the Atlanta BeltLine and Krog St.
- Original warehouse architecture
- Open work area with mezzanine
- Drive in garage
- Full kitchen
- Three restrooms
- Loft-high ceilings
- Skylights
- Featured in numerous Hollywood films
- Steps from Patagonia's flagship store

Krog St

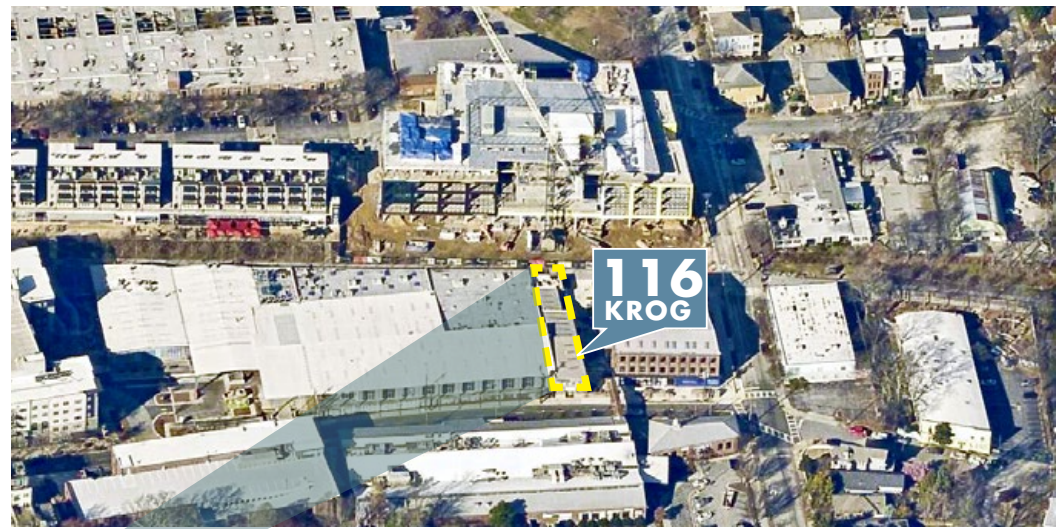
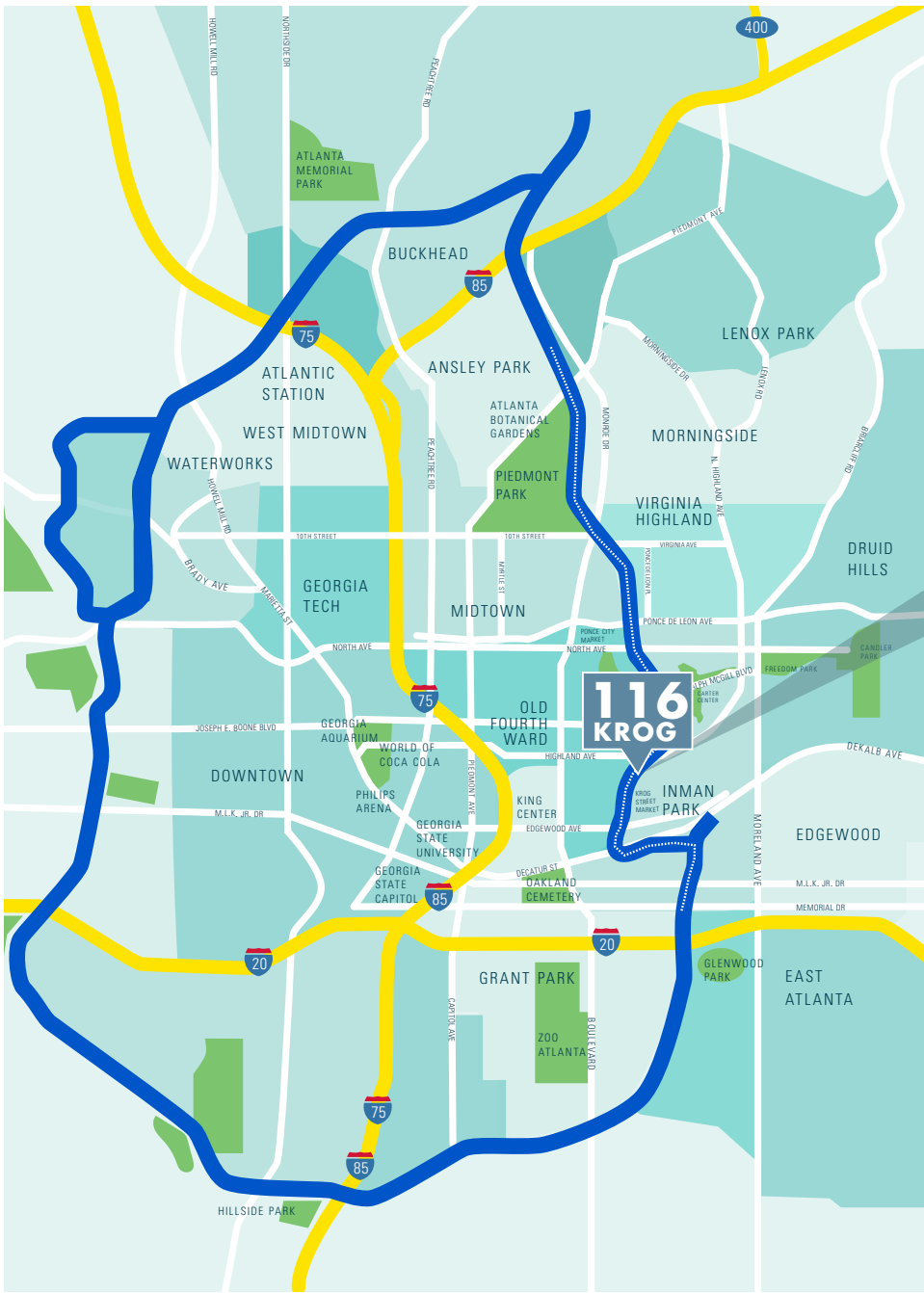


**Atlanta
BeltLine**

"No warranty or representation, express or implied, is made as to the information contained herein, and the same is submitted subject to errors, omissions, change of price, rental, or other conditions, withdrawal without notice, and to any special listing conditions, imposed by our principals."

JEFF POLLOCK, CCIM, SIOR
 JP@POLLOCKCOMMERCIAL.COM
 404.662.2182





Minutes to everything intown, and walkable to the most popular spots on the BeltLine.

Krog Street Market • Lady Bird • Rathbun Steak • Inman Park • SPX Alley Junction Krog District • Ponce City Market • Old Fourth Ward

