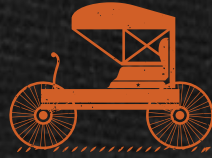


BUILT FOR INNOVATION

EST.



1903

CARRIAGE WORKS

512, 530 & 590 MEANS STREET

ATLANTA  GEORGIA

A PLACE FOR INNOVATORS SINCE 1903
LIMITED STUDIO OPPORTUNITY REMAINS



512

530

590

MEANS STREET

MEANS STREET

MARIETTA STREET





MEANS STREET ESTABLISHED

Means Street was platted in 1869 by W. B. Bass as part of the McMillan Subdivision, and is named after Alexander Means, for the



FIRST TENANT IN OPERATION

512 Means Street was constructed for William R. Ware, an Atlanta furniture manufacturer, and the man behind Atlanta Spring and Bed Company. They remained the original 'tenant' of [the now] Carriage Works, in business from 1900-09.



ATLANTA BUGGY CO. IS BORN

Who Carriage Works is originally coined from, the Atlanta Buggy Co. manufactured buggies in the 530 building from 1903-13.



A PLACE FOR MANUFACTURING

Carriage Works has long stood as a place for makers. Between 1913-26, it served as home to Ware-Hatcher, Southern, and Fox Manufacturing Company. All fizzled out during the depression.

EST. 1903



CARRIAGE WORKS

512, 530 & 590 MEANS STREET



A BRIEF HISTORY

1900 - PRESENT



SUSTAINING INNOVATION

The original place for makers and doers, Carriage Works has consistently remained home to Atlanta's creative workforce for over a century.

Limited studio opportunity remains.



BLOCK CANDY CO. MOVES IN

Occupied from 1928-36 by the Block Candy Co., Atlanta's first confectionery manufacturer, started by the post-Civil War entrepreneur, Frank E. Block.



590 BUILDING ADDED

Developed for Dux Mixture Hardware, 590 Means Street debuts in 1940. The Dux Mixture Hardware Company was a major mill supply house for Atlanta manufacturers.



MOUCHET TEXTILES TAKES OVER

The project is purchased by the Mouchet Corporation, dealers in textile salvage, who occupy and manufacture here until the mid 1980's.



THE OFFICIAL NAMESAKE

In 1992, the project was converted to commercial loft office space and placed on the National Register of Historic Places (512 + 530 buildings). Carriage Works is named.



AROUND CARRIAGE WORKS

*UNOBSTRUCTED VIEWS &
UNDENIABLE CHARACTER*



PROJECT OVERVIEW

LOCATION:	512, 530 & 590 Means Street Atlanta, Georgia 30318
SITE SIZE:	5.61+ acres
YEAR(S) BUILT:	1900, 1903 & 1940 <i>(respectively; renovated 1990, 2004 & 2014)</i>
PARKING RATIO:	3 per 1,000 square feet for cars, plus bicycle and scooter parking
DESIGNATIONS:	The 530 building was listed on the National Register of Historic Places in 1992, followed by the same designation in 1995 for the 512 building.
ON-SITE AMENITIES:	Fitness center <i>(530 building)</i> and rooftop deck <i>(512 building)</i> with unobstructed 360° views of Midtown and Downtown.
SURROUNDING AMENITIES:	<p>Dozens of restaurants within walking distance, including Le Fat, The Optimist, Bartaco, Miller Union, and more.</p> <p>Adjacent to the Atlanta Contemporary Art Center.</p> <p>Walking/biking distance to Georgia Tech.</p>
PUBLIC TRANSPORTATION:	Bus stop connecting to North Station at corner of Means Street and Marietta Street.
SURROUNDING AREA SNAPSHOT:	<p>Carriage Works is located within the West Midtown submarket of Atlanta. A pioneering project for over a century, Carriage Works sustains its original 1900's character, high ceilings, abundant natural light, and build outs capturing raw materials.</p> <p>It offers extremely convenient bikeable/walkable access to surrounding residential units in the West Midtown district, and an abundance of burgeoning art galleries, and related creative services/venues.</p> <p>I-75 access is less than 1.5 miles away.</p>



SUITE 402

1,958 RSF

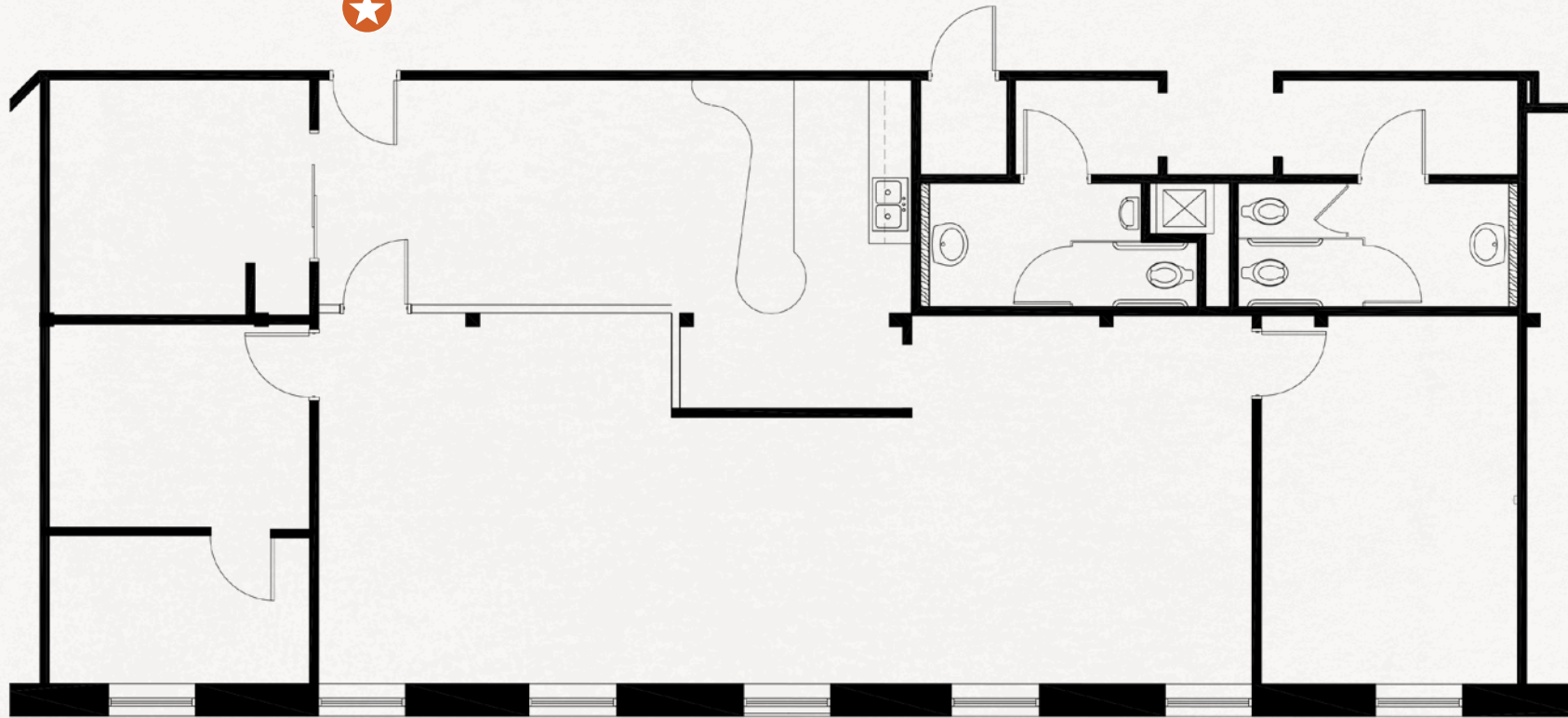
EST.



1903

CARRIAGE WORKS
- 530 MEANS STREET -

PRIMARY
ENTRANCE



NORTH

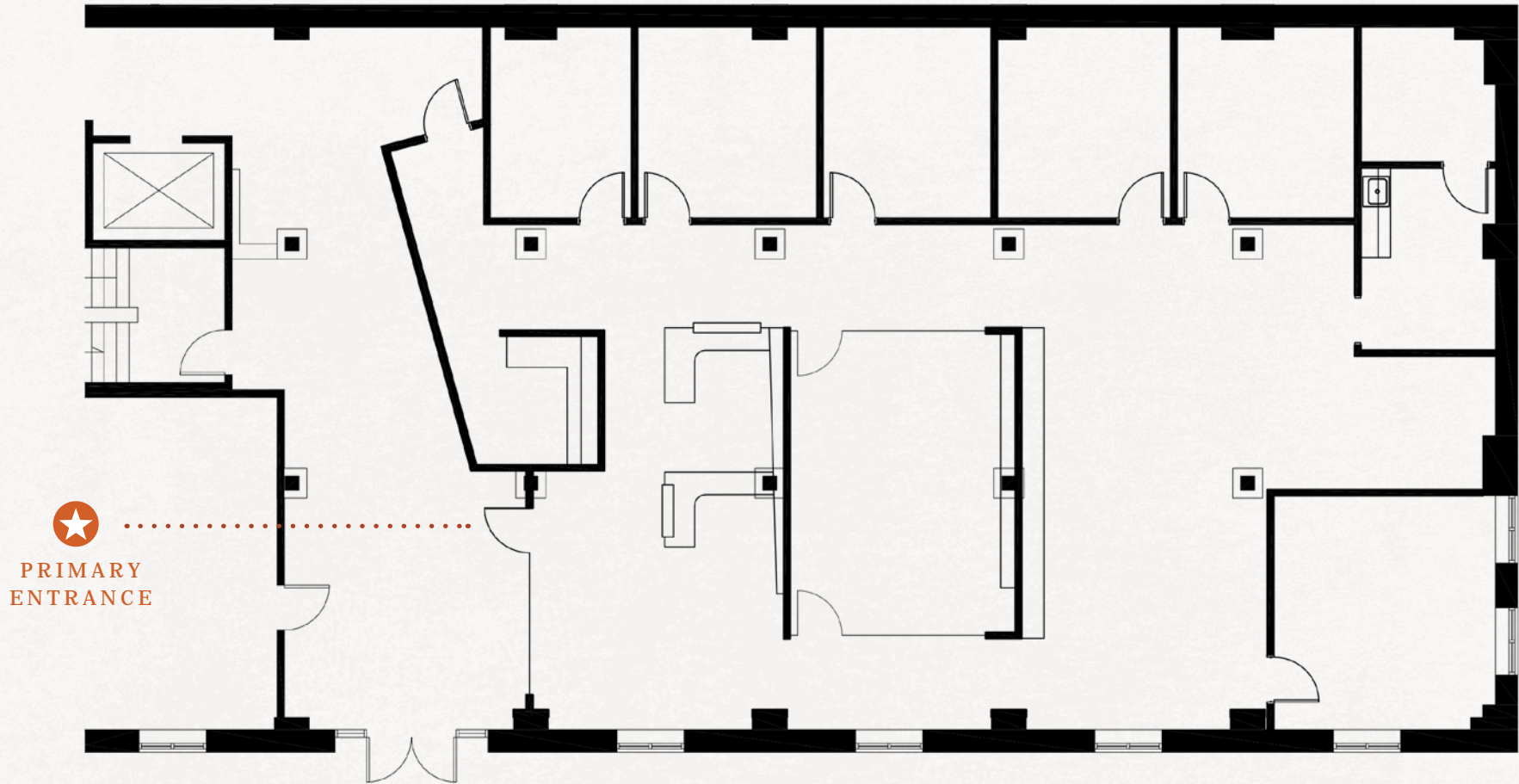
Note: Drawing not to scale.

SUITE 100

3,698 RSF

EST.  1903

CARRIAGE WORKS
- 590 MEANS STREET -



NORTH

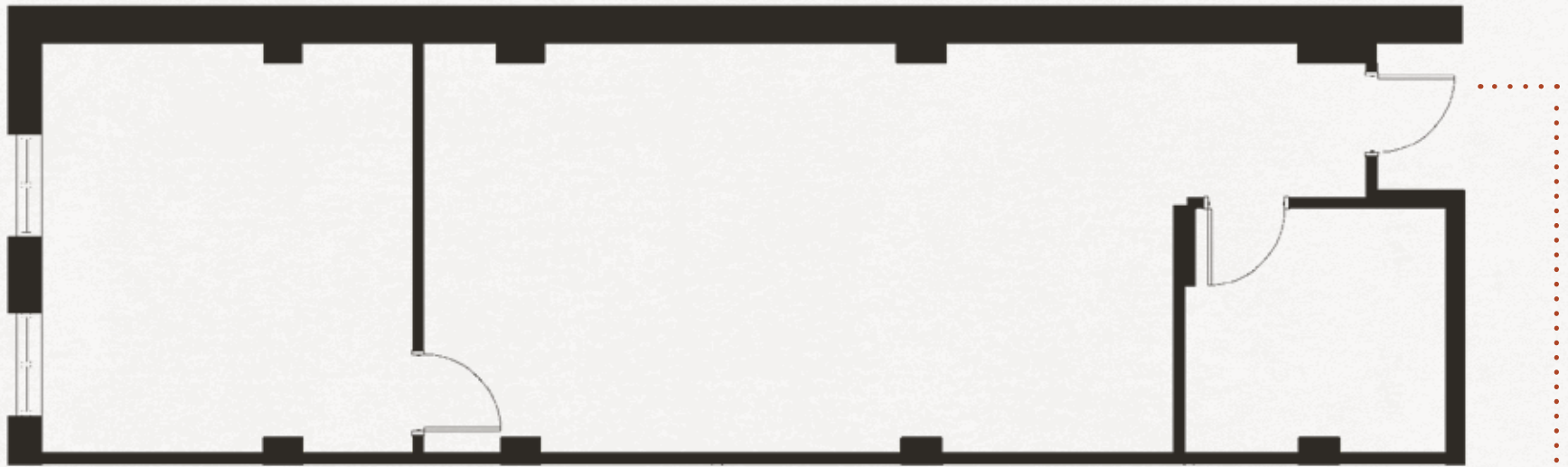
Note: Drawing not to scale.

SUITE 105

1,030 RSF

EST.  1903

CARRIAGE WORKS
- 590 MEANS STREET -



PRIMARY
ENTRANCE



NORTH

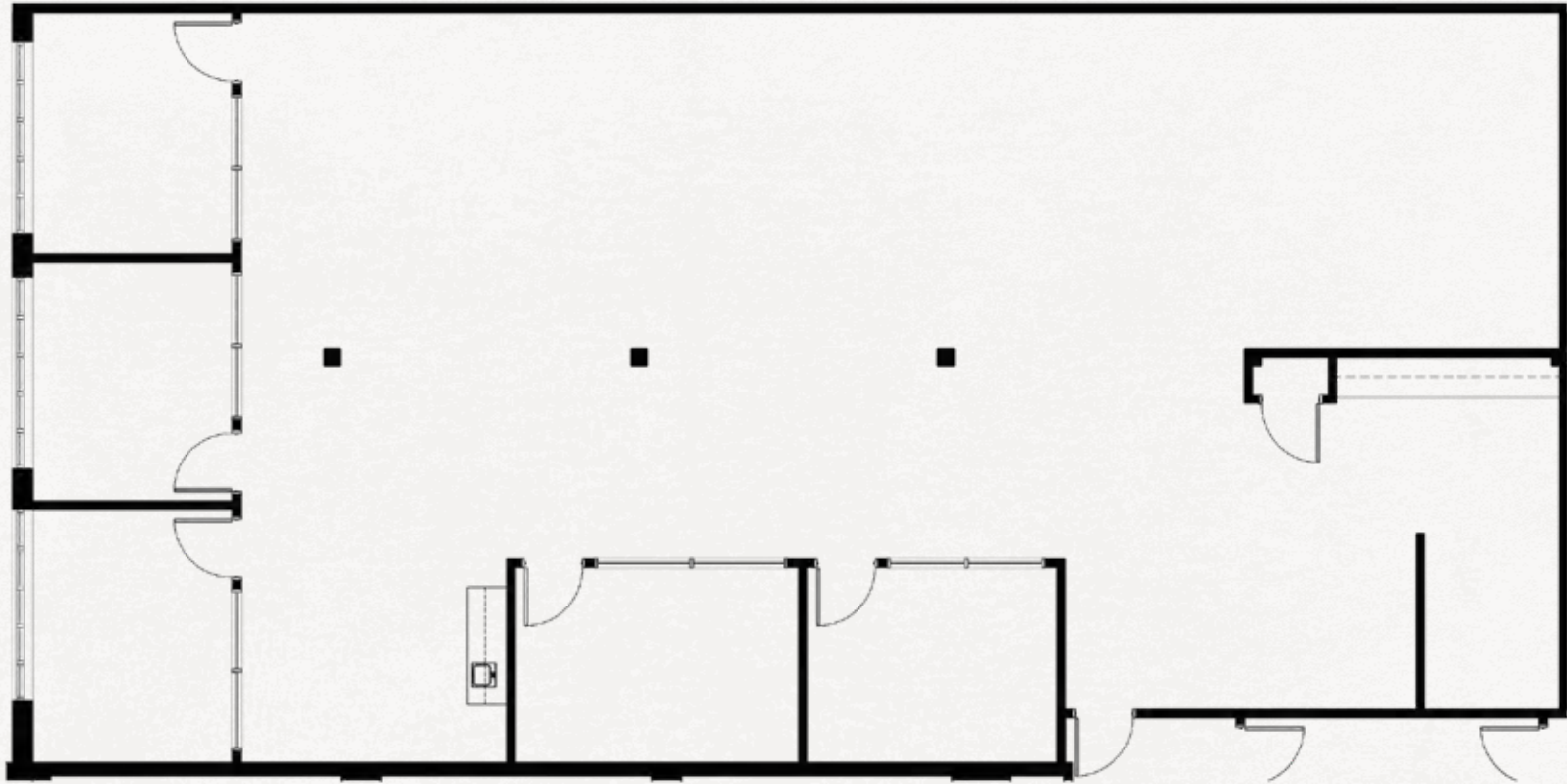
Note: Drawing not to scale.

SUITE 260

3,428 RSF

EST.  1903

CARRIAGE WORKS
- 590 MEANS STREET -



NORTH

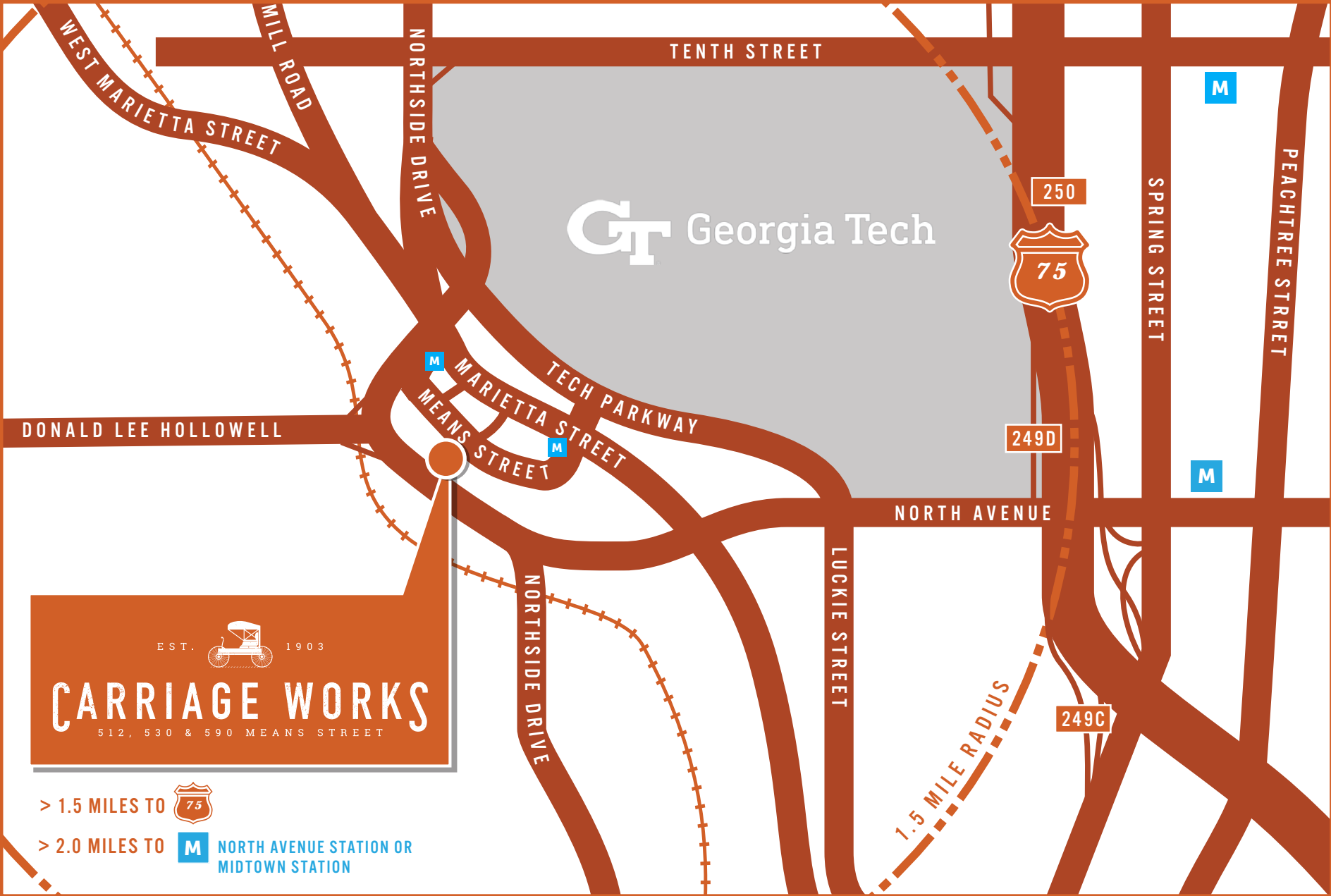
Note: Drawing not to scale.



PRIMARY
ENTRANCE

GETTING TO CARRIAGE WORKS

ACCESS SNAPSHOT



CARRIAGEWORKSATLANTA.COM



FOR LEASING INFORMATION, CONTACT:

JEFF POLLOCK, CCIM, SIOR
JP@POLLOCKCOMMERCIAL.COM
404.662.2182

KATIE SENTELL, CCIM
KATIE@POLLOCKCOMMERCIAL.COM
404.596.8419