

EXECUTIVE SUMMARY

Freestanding River View Office Building with Great Signage Visibility along the Highway
• 158 N Harbor City Blvd Melbourne, FL 32935



OFFERING SUMMARY

Available SF:	12,900 SF
Lease Rate:	\$27.00 per year (Full Service)
Lot Size:	2.44 Acres
Year Built:	1999
Building Size:	34,102 SF
Renovated:	2023
Zoning:	C-2 General Commercial

PROPERTY OVERVIEW

This Office Building sits on N. Harbor City Blvd. and offers beautiful views of the Indian River.

The entire 3rd floor is available and can be subdivided with open cubes, private offices and conference rooms.

Building Renovations in 2023 with new Elevator, Fire Alarms, Sealing/Painting and construction of common area conference room on the Ground Level for tenants to use.

Select tenants will be provided with covered parking options.

LOCATION OVERVIEW

Direct Highway Visibility on US Highway 1
RiverFront Views
+/- 6 Miles to I-95 at Eau Gallie Blvd
+/- 3 Miles to Melbourne Orlando International Airport
+/- 60 Miles to Orlando International Airport
Property is Situated Near Melbourne's High Tech Corridor

ROB BECKNER, SIOR

Principal
321.722.0707 X11
rob@teamlbr.com

CHARLES DUVALL

Office Sales & Leasing
321.722.0707 X19
charles@teamlbr.com

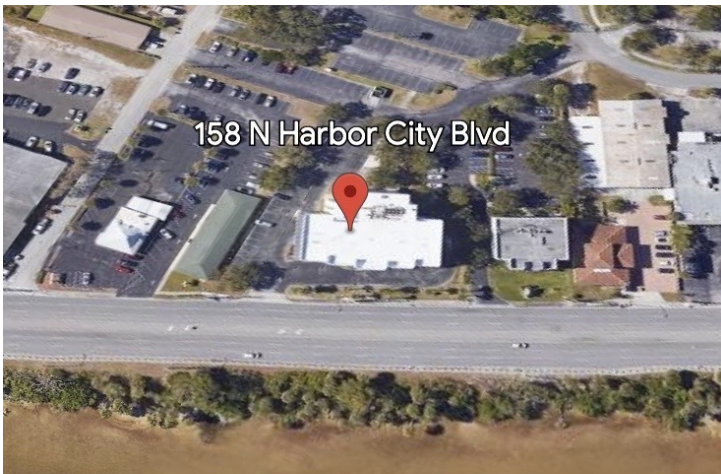
Lightle Beckner Robison, Inc.

321.722.0707 • teamlbr.com
70 W. Hibiscus Blvd.,
Melbourne, FL 32901

Information contained herein has been obtained through sources deemed reliable but cannot be guaranteed as to its accuracy. A purchaser or lessee is expected to verify all information to his/her own satisfaction. Zoning information subject to change and not warranted. Always confirm current requirements with local governing agencies.

ADDITIONAL PHOTOS

Freestanding River View Office Building with Great Signage Visibility along the Highway
• 158 N Harbor City Blvd Melbourne, FL 32935



ROB BECKNER, SIOR
Principal
321.722.0707 X11
rob@teamlbr.com

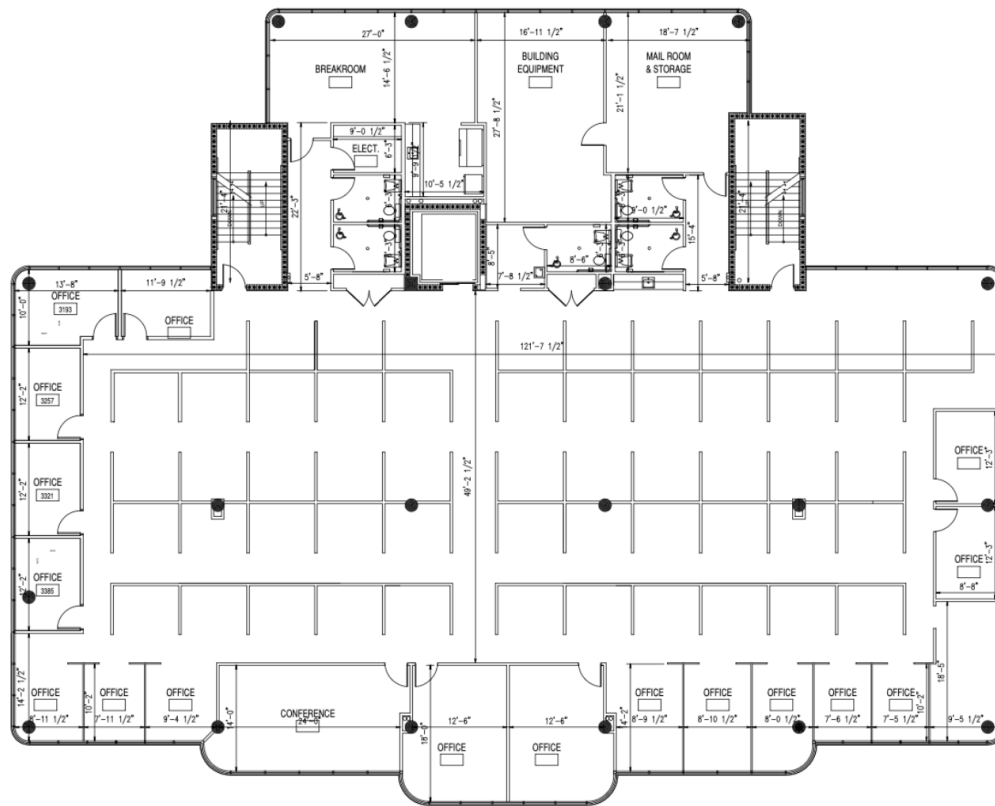
CHARLES DUVALL
Office Sales & Leasing
321.722.0707 X19
charles@teamlbr.com

Lightle Beckner Robison, Inc.
321.722.0707 • teamlbr.com
70 W. Hibiscus Blvd.,
Melbourne, FL 32901

Information contained herein has been obtained through sources deemed reliable but cannot be guaranteed as to its accuracy. A purchaser or lessee is expected to verify all information to his/her own satisfaction. Zoning information subject to change and not warranted. Always confirm current requirements with local governing agencies.

FLOOR PLANS

Freestanding River View Office Building with Great Signage Visibility along the Highway
• 158 N Harbor City Blvd Melbourne, FL 32935



ROB BECKNER, SIOR
Principal
321.722.0707 X11
rob@teamlbr.com

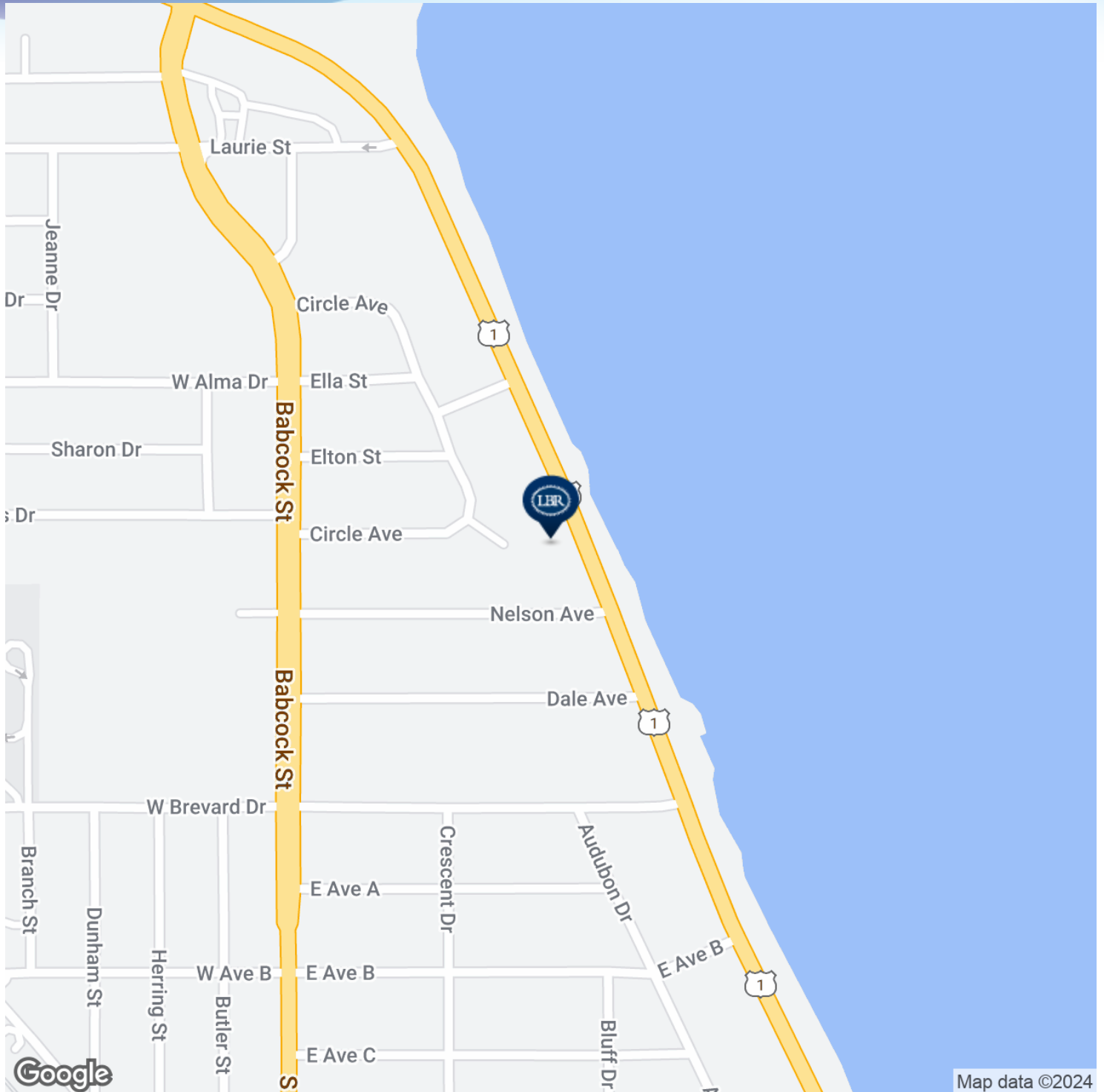
CHARLES DUVALL
Office Sales & Leasing
321.722.0707 X19
charles@teamlbr.com

Lightle Beckner Robison, Inc.
321.722.0707 • teamlbr.com
70 W. Hibiscus Blvd.,
Melbourne, FL 32901

Information contained herein has been obtained through sources deemed reliable but cannot be guaranteed as to its accuracy. A purchaser or lessee is expected to verify all information to his/her own satisfaction. Zoning information subject to change and not warranted. Always confirm current requirements with local governing agencies.

LOCATION MAP

Freestanding River View Office Building with Great Signage Visibility along the Highway
• 158 N Harbor City Blvd Melbourne, FL 32935



ROB BECKNER, SIOR

Principal
321.722.0707 X11
rob@teamlbr.com

CHARLES DUVALL

Office Sales & Leasing
321.722.0707 X19
charles@teamlbr.com

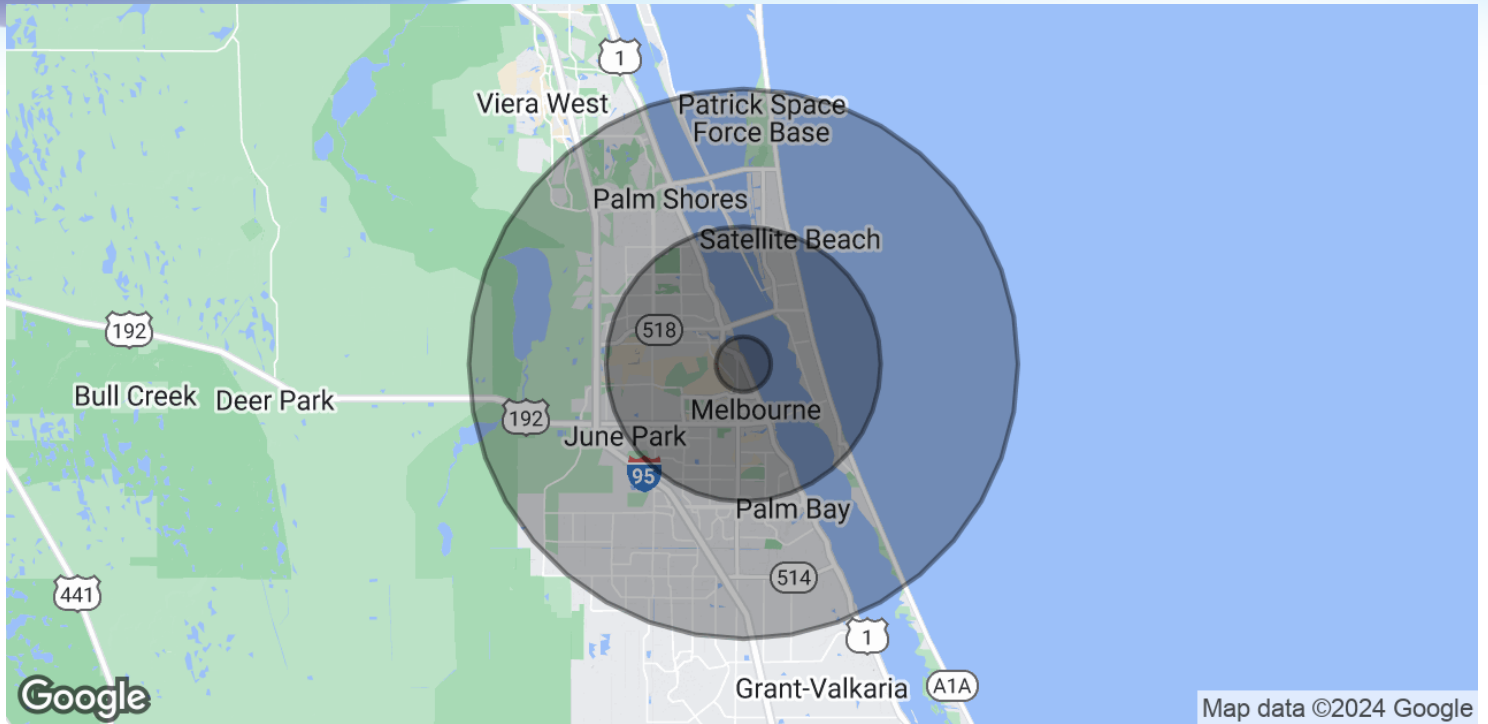
Lightle Beckner Robison, Inc.

321.722.0707 • teamlbr.com
70 W. Hibiscus Blvd.,
Melbourne, FL 32901

Information contained herein has been obtained through sources deemed reliable but cannot be guaranteed as to its accuracy. A purchaser or lessee is expected to verify all information to his/her own satisfaction. Zoning information subject to change and not warranted. Always confirm current requirements with local governing agencies.

DEMOGRAPHICS MAP & REPORT

Freestanding River View Office Building with Great Signage Visibility along the Highway
 • 158 N Harbor City Blvd Melbourne, FL 32935



POPULATION

	1 MILE	5 MILES	10 MILES
Total Population	3,019	124,597	270,693
Average Age	49.1	45.0	44.0
Average Age (Male)	46.2	42.7	42.2
Average Age (Female)	52.1	46.7	45.6

HOUSEHOLDS & INCOME

	1 MILE	5 MILES	10 MILES
Total Households	1,488	54,184	111,206
# of Persons per HH	2.0	2.3	2.4
Average HH Income	\$48,807	\$60,940	\$65,570
Average House Value	\$190,953	\$213,629	\$235,276

* Demographic data derived from 2020 ACS - US Census

ROB BECKNER, SIOR

Principal
 321.722.0707 X11
 rob@teamlbr.com

CHARLES DUVALL

Office Sales & Leasing
 321.722.0707 X19
 charles@teamlbr.com

Lightle Beckner Robison, Inc.

321.722.0707 • teamlbr.com
 70 W. Hibiscus Blvd.,
 Melbourne, FL 32901

Information contained herein has been obtained through sources deemed reliable but cannot be guaranteed as to its accuracy. A purchaser or lessee is expected to verify all information to his/her own satisfaction. Zoning information subject to change and not warranted. Always confirm current requirements with local governing agencies.