



JOHN STANLEY
&
ASSOCIATES

COMMERCIAL REAL ESTATE



Lot 1, Block F - Malcolm Drive
BILLINGSLEY PLACE
Montgomery, AL 36116

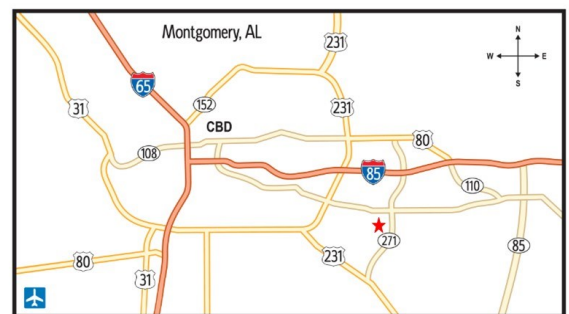
FOR SALE

- **Listed Price:** \$213,000.00 (\$6.00/S.F.)
- **Lot Size:** +/- 35,501 S.F.
- **Zoning:** B-3 (Commercial)
- **Best Use:** Business/Commercial
- **Visibility:** Excellent
- **Possession:** Immediate
- **Listing Type:** Exclusive

Commercial lot at the corner of Malcolm Drive and Averiett Drive just off Taylor Road. Excellent +/- 35,501 S.F. lot for business and commercial use. Subject to Protective Covenants and Restrictions. Contact John Stanley, CCIM, for more information at (334) 271-2475.



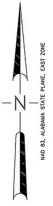
John Stanley, CCIM
John Stanley & Associates, Inc.
4747 Woodmere Boulevard
Montgomery, AL 36106
(334) 271-2475 voice
(334) 271-2421 fax
jstanley@johnstanleyassociates.com
www.johnstanleyassociates.com



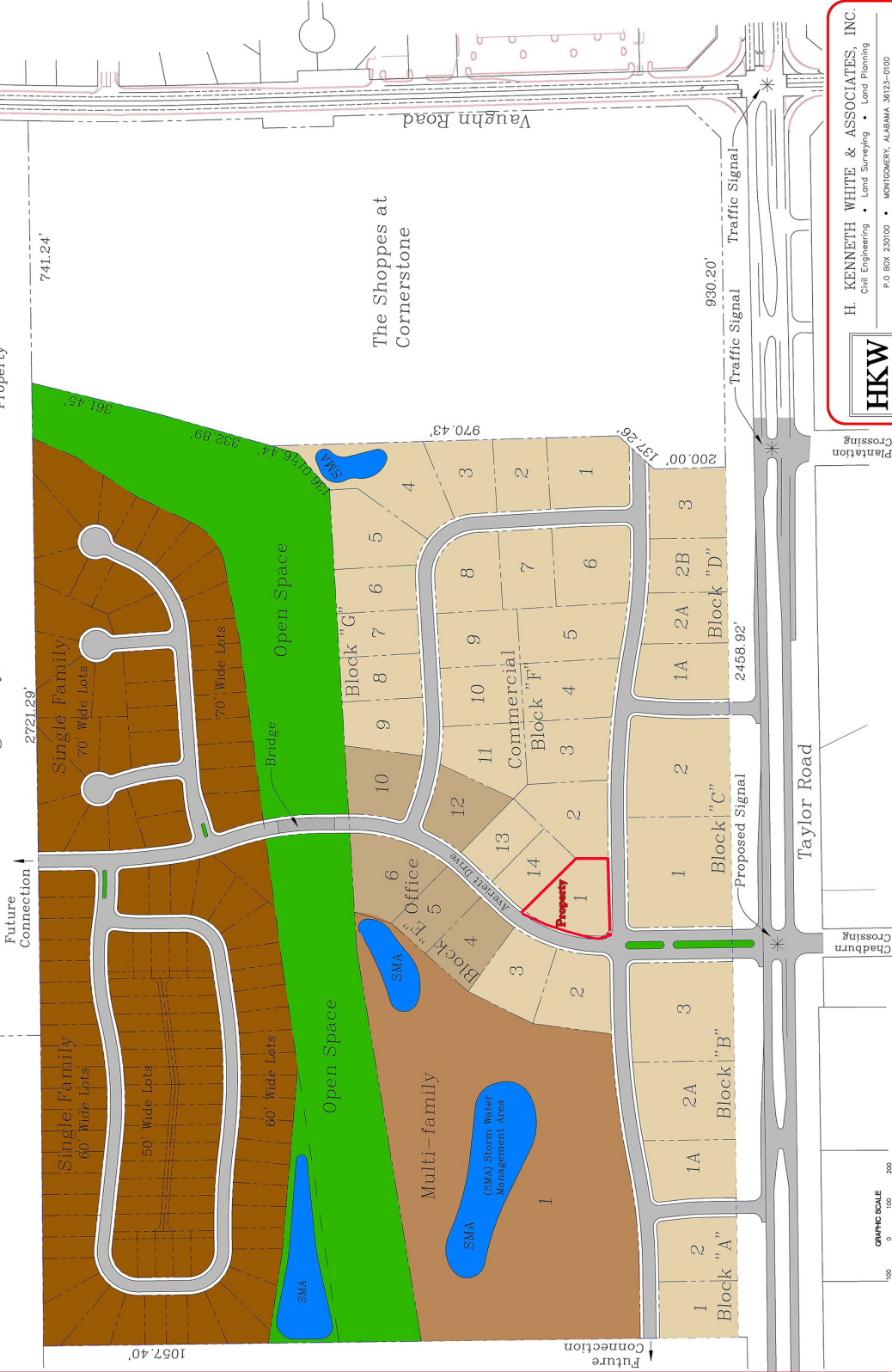
All information is from sources deemed reliable, but no warranty is made as to the accuracy thereof and same is submitted subject to errors, omissions, change of price, or other conditions, such as prior sales or withdrawal without notice by John Stanley & Associates, Inc. or the Owner.

02/19/24

Conceptual Land Use Plan Billingsley Place Montgomery, Alabama



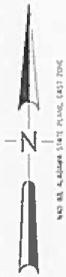
Graham Property



HKW

H. KENNETH WHITE & ASSOCIATES, INC.
 Civil Engineering • Land Surveying • Land Planning
 P.O. BOX 230100 • MONTGOMERY, ALABAMA 36123-0100
 4170 LOMAC STREET - SUITE B • MONTGOMERY, ALABAMA 36108
 PHONE: (334) 272-9801 • FAX: (334) 272-5464 • WWW.HKW.COM

Billingsley Place Montgomery, Alabama



NAD 83 - ALABAMA STATE PLANE EAST ZONE

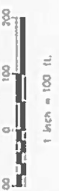


The Reserve At
Billingsley Place
Apartments

for more information contact:

John Stanley, CCIM
John Stanley & Associates, Inc.
4747 Woodmere Blvd
Montgomery, AL 36106
(334) 271-2475 voice
(334) 271-2421 fax
jstanley@johnstanleyassociates.com
www.johnstanleyassociates.com

Not to Scale
GRAPHIC SCALE



HKW

H. KENNETH WHITE & ASSOCIATES, INC.
Civil Engineering • Land Surveying • Land Planning

P.O. BOX 22000 • MONTGOMERY, ALABAMA 36102-0200
415 SOUTH BRIDGES AVENUE, SUITE 200
MONTGOMERY, ALABAMA 36102-1000
PHONE (205) 772-2000 • FAX (205) 772-1441 • WWW.HKW.COM



Bell Rd

Bell Rd

Vaughn Rd

Corner Stone Shopping Center

Sturbridge Shopping Center

Billingsley Place Residential

Property

The Reserve Apartments

Malcom Dr

Taylor Rd

Sturbridge Subdivision

DOLLAR GENERAL

Home Depot

CVS

Target

Walmart

ACE Hardware

MAX

WALSH'S CONCRETE

WALSH'S CONCRETE

WALSH'S CONCRETE

WALSH'S CONCRETE

WALSH'S CONCRETE

WALSH'S CONCRETE

WALSH'S CONCRETE

WALSH'S CONCRETE

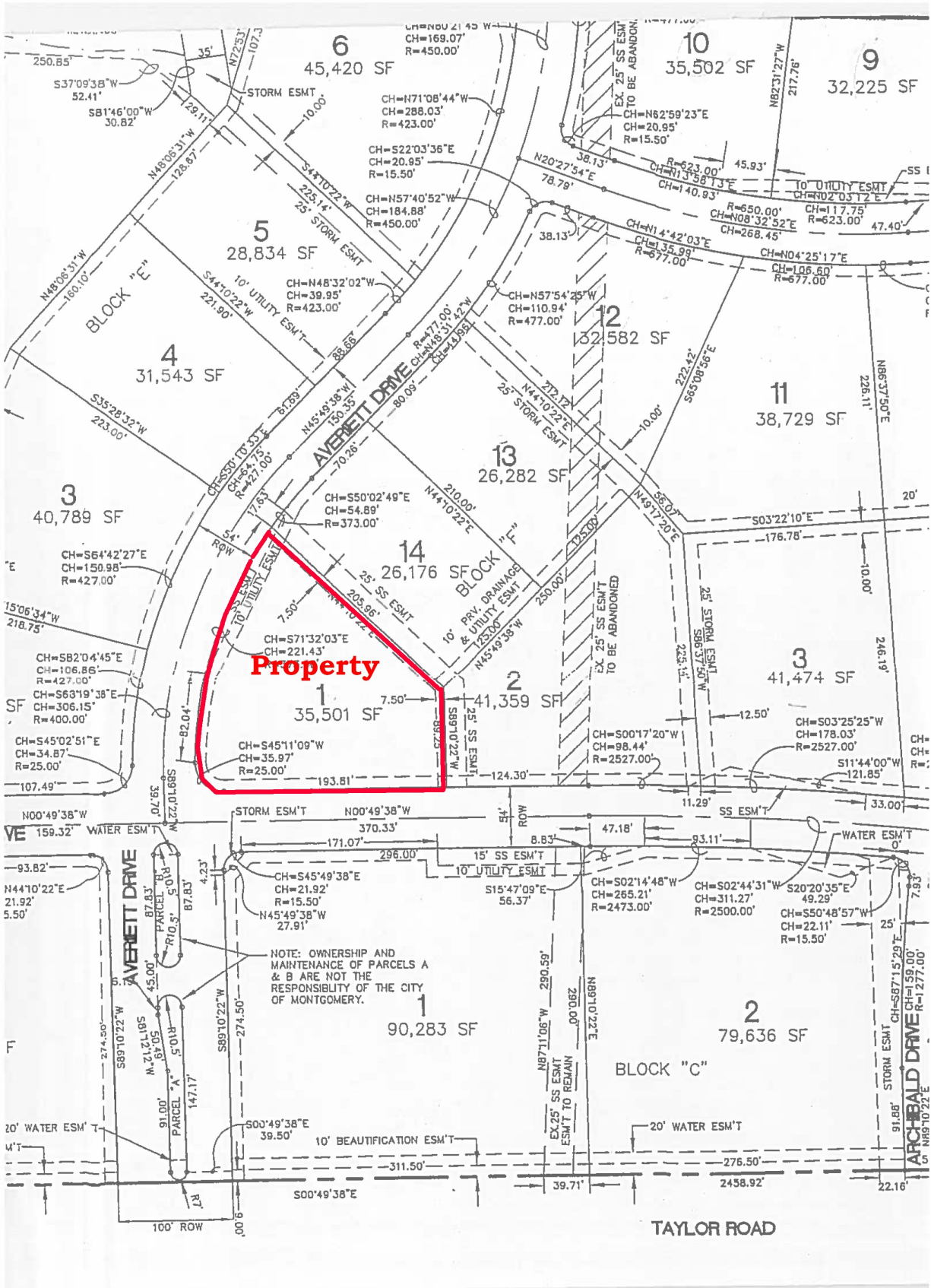
WALSH'S CONCRETE

WALSH'S CONCRETE

WALSH'S CONCRETE

WALSH'S CONCRETE

WALSH'S CONCRETE



Property

NOTE: OWNERSHIP AND MAINTENANCE OF PARCELS A & B ARE NOT THE RESPONSIBILITY OF THE CITY OF MONTGOMERY.

TAYLOR ROAD