



SIMMONDS HEALTHCARE  
3023 80th Avenue, S.E.  
Mercer Island, Washington 98040

TELEPHONE 206-236-8800  
FAX 206-232-6246

Helen Ellis  
Memorial Hospital

SATELLITE CLINIC  
New Port Richey, FL

STEPHEN B. JOHNS  
Architect

12750 Merritt Drive  
Suite 600 LB 50  
Dallas, Texas 75251  
O: 214 233-0482  
F: 214 233-2259

THE INFORMATION CONTAINED ON THIS DOCUMENT WHICH WAS DEVELOPED BY SIMMONDS HEALTHCARE IS PROPRIETARY AND CONFIDENTIAL. THE INFORMATION REMAINS THE PROPERTY OF SIMMONDS HEALTHCARE. DISTRIBUTION OF THIS DOCUMENT IS PROHIBITED WITHOUT EXPRESS WRITTEN PERMISSION.

ISSUED FOR CONSTRUCTION

FLOOR PLAN

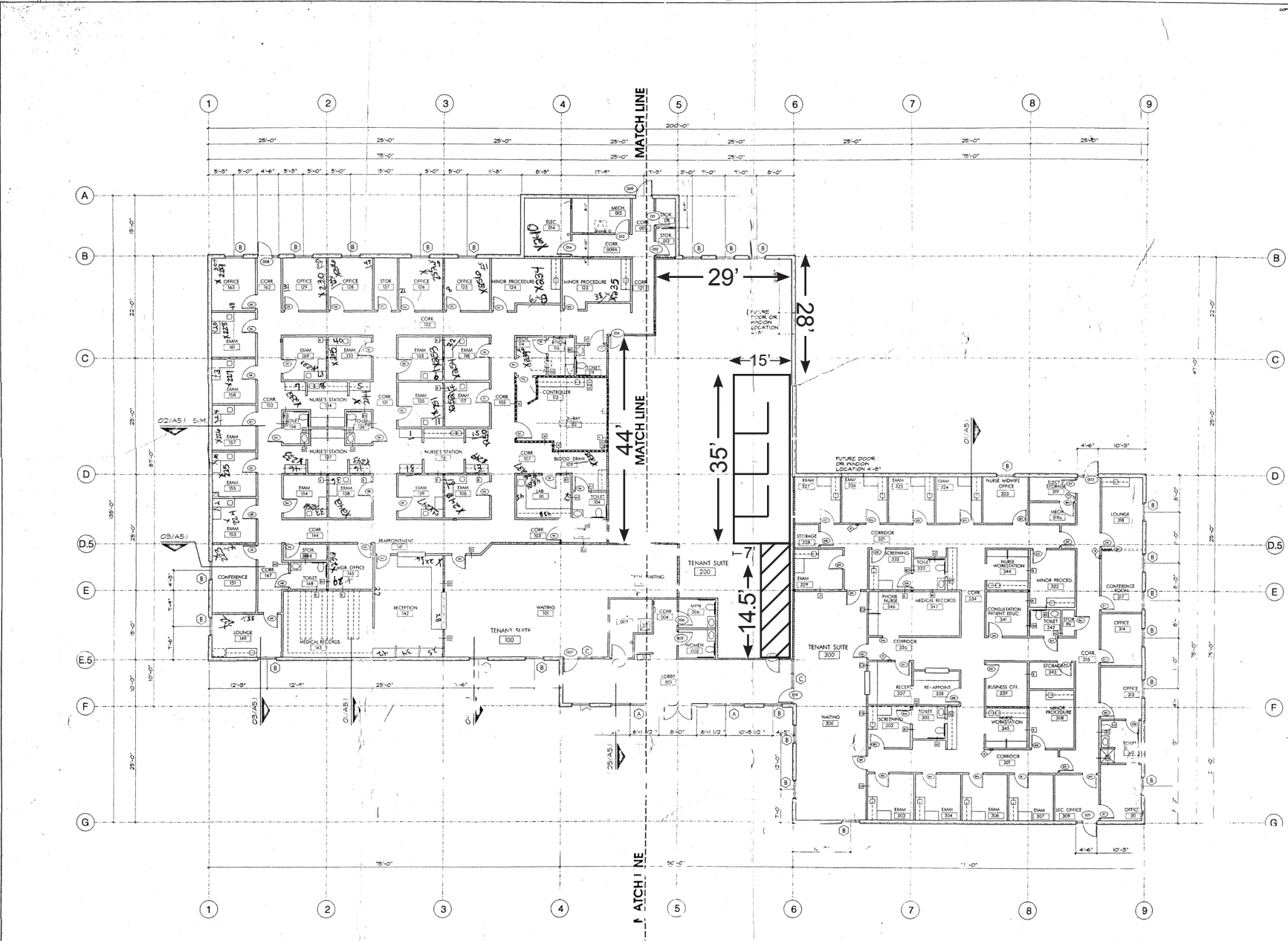
REVISIONS:

4-11-05

AAI NO.: 95168

A2.1

DATE: 12 NOV 05



NOTES

1. ROOMS 101, 22, 300, 311, 313, 314, 317, AND 318 SHALL RECEIVE CARPET WITH CARPET BORDERS.
2. R; PER TO SHEETS A2.2 AND A2.3 FOR 1/4" PLANS.

\*Measurements are not accurate or to scale.



01 FLOOR PLAN  
SCALE: 1/8" = 1'-0"