

820 E Terra Cotta Suite 118

Crystal Lake, IL 60014

For Sale

MLS #11789321

OFFICE CONDO



OFFICE CONDO 1,250 SF

PRICE REDUCED
\$139,900 (\$111.92 PSF)

MEDICAL OR PROFESSIONAL OFFICE CONDO

Suite 118: 1,250 SF professional office condo. Single level masonry office condo built out for medical use but could be easily configured for general office use.

Four potential offices (3 with removable sinks), break room, waiting room, clerical office and 2 ADA bathrooms.

Price Reduced - was \$159,900, now only \$111.92 psf. Association dues are \$270/mo.

Specifications

Size:	1,250 SF
Year Built:	2002
HVAC System:	GFA/ Central Air
Electrical:	100 amp
Sprinklers:	No
Washrooms:	2 ADA
Ceiling Height:	9 ft
Parking:	Common
Sewer/Water:	City
Zoning:	O
Taxes:	\$4,878.44 (2022)
Association:	\$270/mo.
PIN #:	14-34-178-008,009

Demographics	1 Mile	2 Miles	3 Miles
Total Population	3,658	14,242	33,632
Average HH Income	\$125,617	\$122,272	\$112,489

[CLICK HERE TO VIEW OUR WEBSITE](#)

No warranty or representation is made as to the accuracy of the foregoing information. Terms of sale or lease and availability are subject to change or withdrawal without notice. This document is for information purposes only. No offer of sub-agency is being made.



www.PremierCommercialRealty.com | 847.854.2300 | 9225 S. Route 31, Lake in the Hills, IL 60156

Senior Broker
Bruce Kaplan

BruceK@PremierCommercialRealty.com
O: 847.854.2300 xx20 C: 847.507.1759

820 E Terra Cotta Suite 118
Crystal Lake, IL 60014

For Sale

OFFICE CONDO



[CLICK HERE TO VIEW OUR WEBSITE](#)

No warranty or representation is made as to the accuracy of the foregoing information. Terms of sale or lease and availability are subject to change or withdrawal without notice. This document is for information purposes only. No offer of sub-agency is being made.

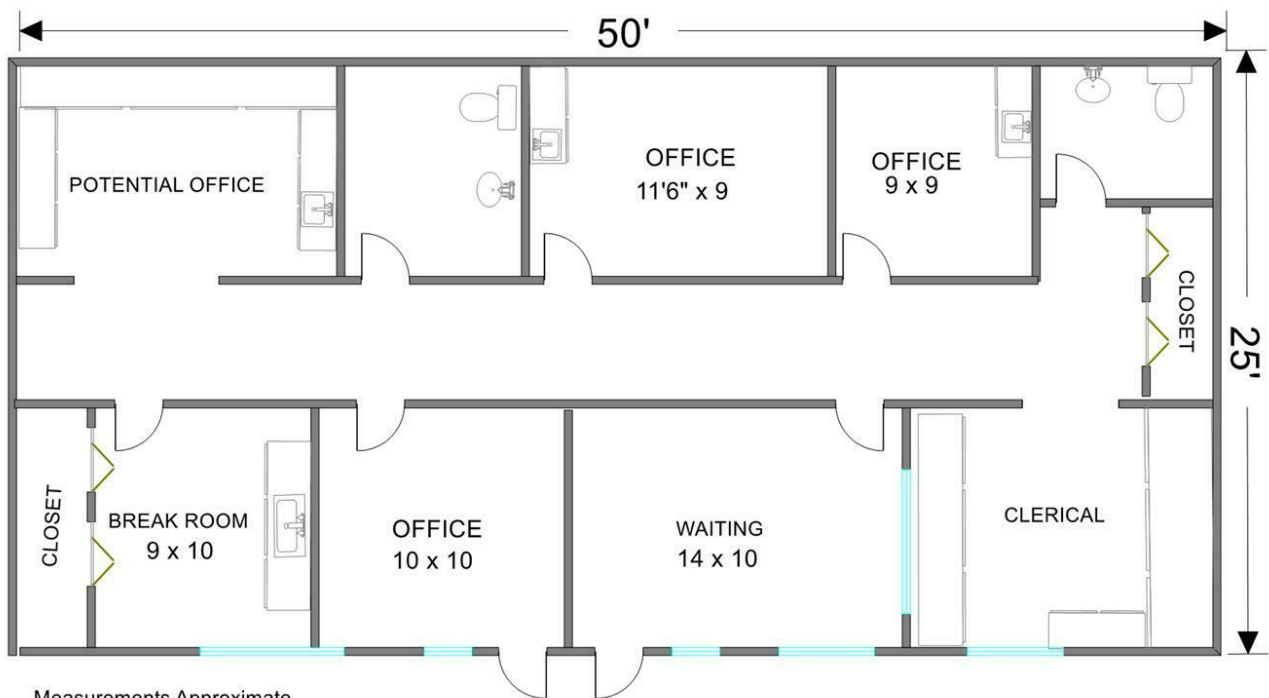
PREMIER
COMMERCIAL REALTY

www.PremierCommercialRealty.com | 847.854.2300 | 9225 S. Route 31, Lake in the Hills, IL 60156

Senior Broker
Bruce Kaplan
BruceK@PremierCommercialRealty.com
O: 847.854.2300 xx20 C: 847.507.1759

OFFICE CONDO

SUITE 118 1,250 SF



[CLICK HERE TO VIEW OUR WEBSITE](#)

No warranty or representation is made as to the accuracy of the foregoing information. Terms of sale or lease and availability are subject to change or withdrawal without notice. This document is for information purposes only. No offer of sub-agency is being made.