

Commercial Land

2117 Church St
Johnsburg, IL 60051

For Sale

MLS #11772886

COMMERCIAL LAND



COMMERCIAL LAND .87 ACRES

REDUCED \$99,900 (\$2.64 PSF)

Commercial Land PRICE REDUCED 0.87 AC

.87 acre well priced commercial lot on Johnsburg Road (Church St. address) at the entrance to the new 68 nit senior housing development called Berkshire Apartments.

Village is open to retail, office or mixed use. Near proposed 110 unit ranch style rentals (Redwood Development). Zoning needs to be designated by Village. Anticipate an address change to Johnsburg Rd.

Specifications

Description:	Commercial Land - Office
Land Size:	0.87 Acres (37,897 SF)
Topography:	Level
Environmental Status:	TBA
Utilities:	to Site
Sewer/Water:	City
Frontage Dimensions:	210×201×153×204
Zoning:	R4 Planned Dev
Taxes:	\$1,144.34 (2022)
PIN #:	09-13-276-052

Demographics	1 Mile	3 Miles	5 Miles
Total Population	3,021	23,567	63,117
Average HH Income	\$106,483	\$99,815	\$92,758

[CLICK HERE TO VIEW OUR WEBSITE](#)

No warranty or representation is made as to the accuracy of the foregoing information. Terms of sale or lease and availability are subject to change or withdrawal without notice. This document is for information purposes only. No offer of sub-agency is being made.



www.PremierCommercialRealty.com | 847.854.2300 | 9225 S. Route 31, Lake in the Hills, IL 60156

Senior Broker
Bruce Kaplan

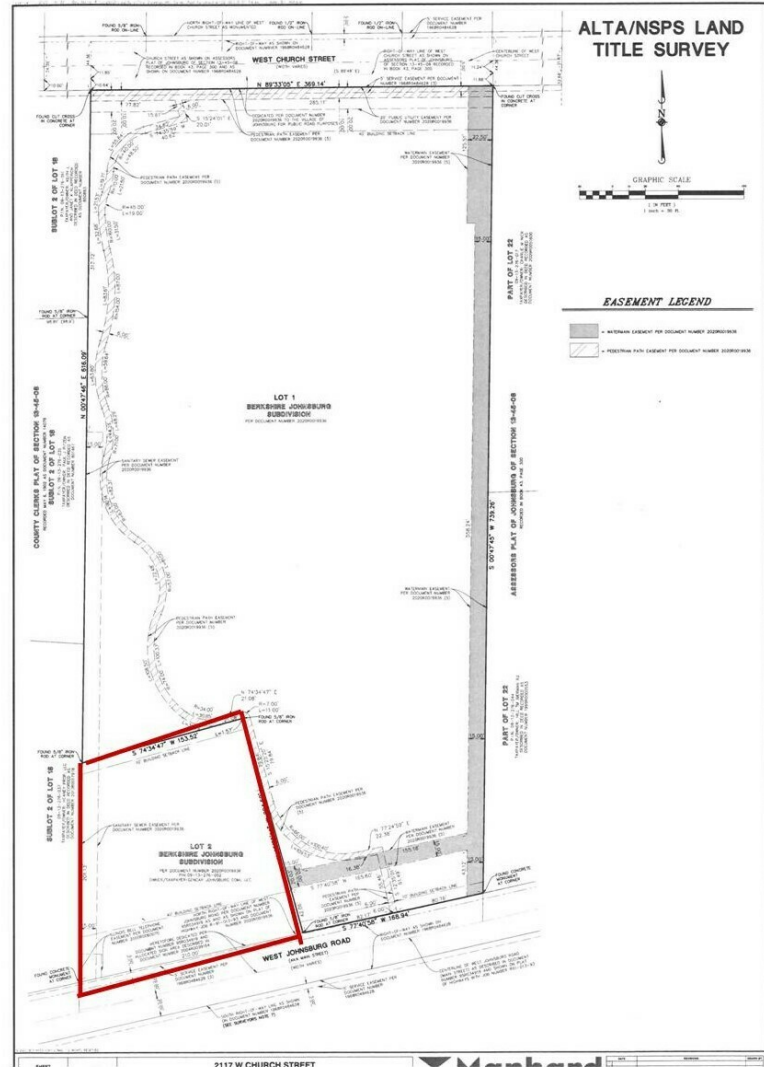
BruceK@PremierCommercialRealty.com
O: 847.854.2300 xx20 C: 847.507.1759

Commercial Land

2117 Church St
Johnsburg, IL 60051

For Sale

COMMERCIAL LAND



[CLICK HERE TO VIEW OUR WEBSITE](#)

No warranty or representation is made as to the accuracy of the foregoing information. Terms of sale or lease and availability are subject to change or withdrawal without notice. This document is for information purposes only. No offer of sub-agency is being made.



www.PremierCommercialRealty.com | 847.854.2300 | 9225 S. Route 31, Lake in the Hills, IL 60156

Senior Broker
Bruce Kaplan

BruceK@PremierCommercialRealty.com
O: 847.854.2300 xx20 C: 847.507.1759