

**FOR
SALE**

1/2 ACRE COMMERCIAL SITE FOR DEVELOPMENT

1041 W Euclid Ave, DeLand, FL 32720



ABOUT THE PROPERTY

SIZE .52± acres

PRICE Subject to offers

ZONING B-4C

FLU Commercial

UTILITIES Water and sewer available

ROAD FRONTAGE 150'± on S Spring Garden Ave
150'± on W Euclid Ave

PARCEL IDs 701702230130

DESCRIPTION

Frontage on S Spring Garden Avenue!

This .52-acre commercial plot on South Spring Garden Ave benefits from excellent visibility, with an impressive average traffic count of 27,500 and situated at the corner of a stoplight intersection. Positioned within an X flood zone, the entire site is fully developable, offering an ideal opportunity for a lucrative venture with prime exposure along South Spring Garden Ave.

Call for more information today!

MAURY L. CARTER & ASSOCIATES, INC.

Licensed Real Estate Brokers | www.maurycarter.com | 407-422-3144

Offering subject to errors, omission, prior sale or withdrawal without notice.



**FOR
SALE**

1/2 ACRE COMMERCIAL SITE FOR DEVELOPMENT

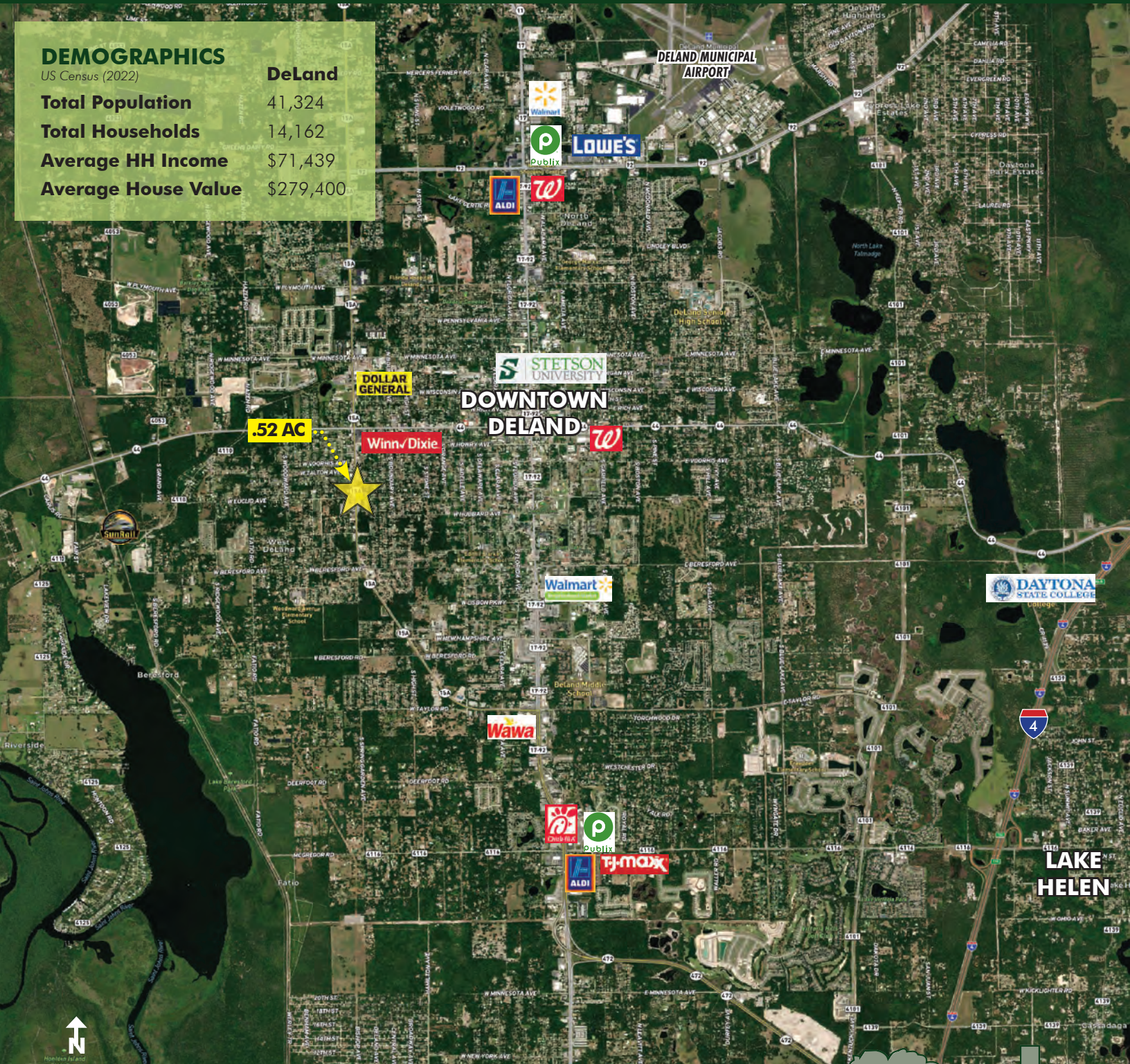
1041 W Euclid Ave, DeLand, FL 32720

DEMOGRAPHICS

US Census (2022)

DeLand

Total Population	41,324
Total Households	14,162
Average HH Income	\$71,439
Average House Value	\$279,400



REGIONAL MAP

MAURY L. CARTER & ASSOCIATES, INC.

Licensed Real Estate Brokers | www.maurycarter.com | 407-422-3144

Offering subject to errors, omission, prior sale or withdrawal without notice.



**FOR
SALE**

1/2 ACRE COMMERCIAL SITE FOR DEVELOPMENT

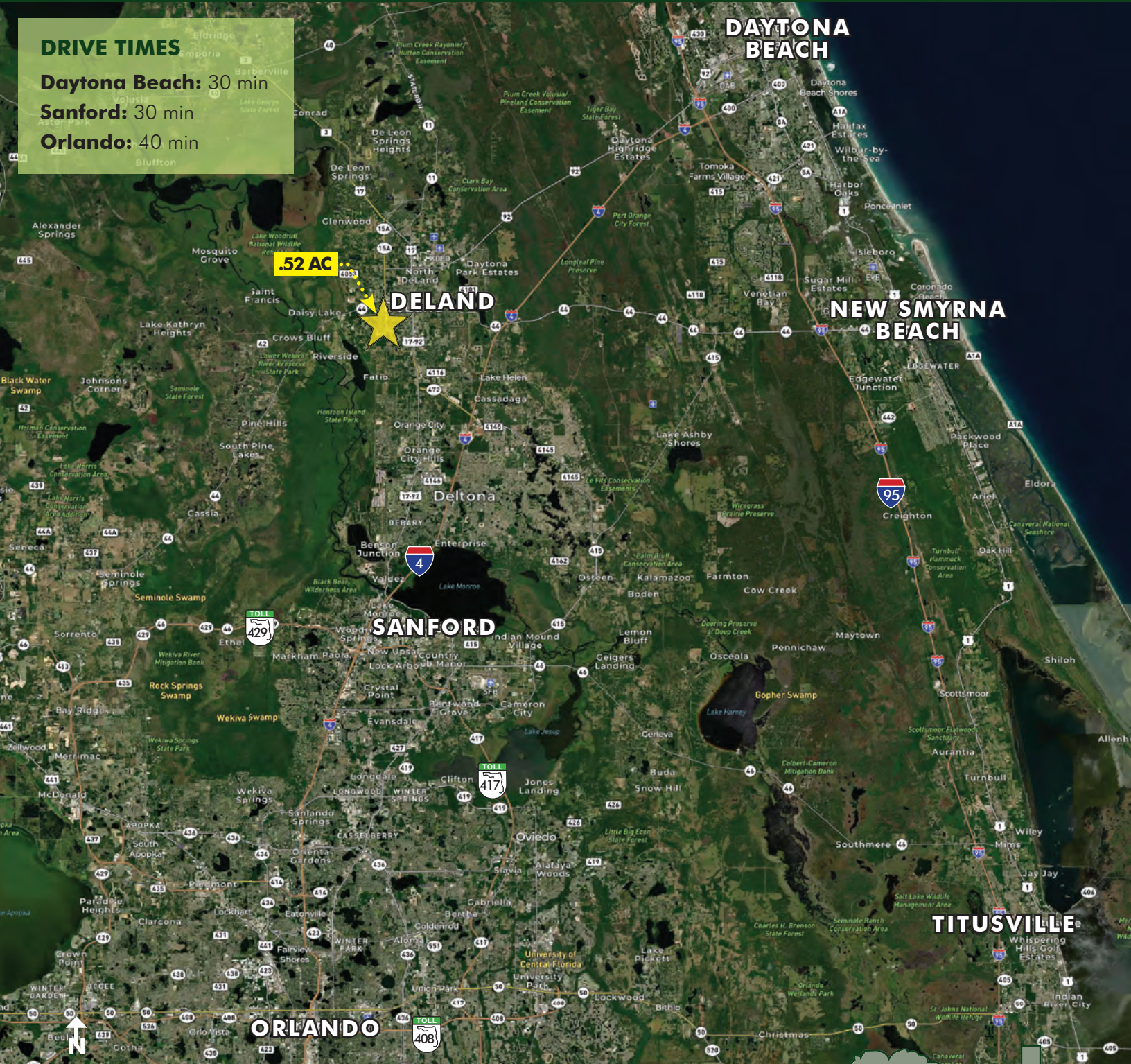
1041 W Euclid Ave, DeLand, FL 32720

DRIVE TIMES

Daytona Beach: 30 min

Sanford: 30 min

Orlando: 40 min



LOCATION MAP

MAURY L. CARTER & ASSOCIATES, INC.

Licensed Real Estate Brokers | www.maurycarter.com | 407-422-3144

Offering subject to errors, omission, prior sale or withdrawal without notice.

