

# FOR LEASE - ONE HARBOR PLACE

One Harbor Place • 1901 S Harbor City Blvd Melbourne, FL 32901



## OFFERING SUMMARY

**Available SF:** 5,952 SF

**Lease Rate:** \$25.00 SF/yr (Gross)

**Lot Size:**

**Building Size:** 78,488 SF

**Market:** South Brevard

**Submarket:** Melbourne

## PROPERTY OVERVIEW

One of the most prestigious Class "A" office buildings in Brevard County. This building is geared towards those with discriminating taste. One Harbor Place has undergone multi-million dollar renovations over the past several years.

Situated on the Indian River with amazing views of the river, dolphins, and rockets launching into space.

## PROPERTY HIGHLIGHTS

- On-site covered parking garage
- On-site management team
- On-site facilities manager
- Weight room ~ exercise facilities
- After hours restricted access

### ROB BECKNER, SIOR

Principal  
321.722.0707 X11  
rob@teamlbr.com

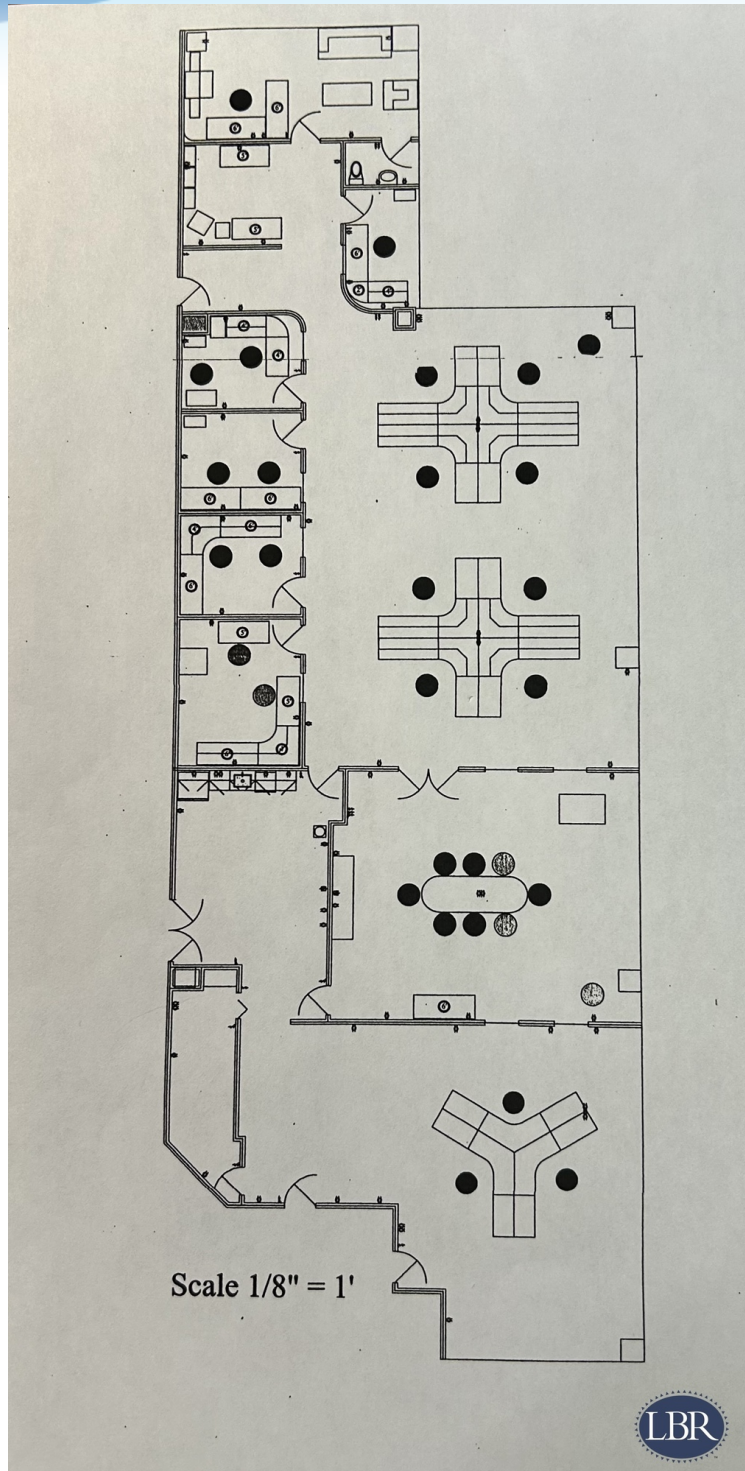
### Lightle Beckner Robison, Inc.

321.722.0707 • teamlbr.com  
70 W. Hibiscus Blvd.,  
Melbourne, FL 32901

Information contained herein has been obtained through sources deemed reliable but cannot be guaranteed as to its accuracy. A purchaser or lessee is expected to verify all information to his/her own satisfaction. Zoning information subject to change and not warranted. Always confirm current requirements with local governing agencies.

# FLOOR PLAN

One Harbor Place • 1901 S Harbor City Blvd Melbourne, FL 32901



## ROB BECKNER, SIOR

Principal  
321.722.0707 X11  
rob@teamlbr.com

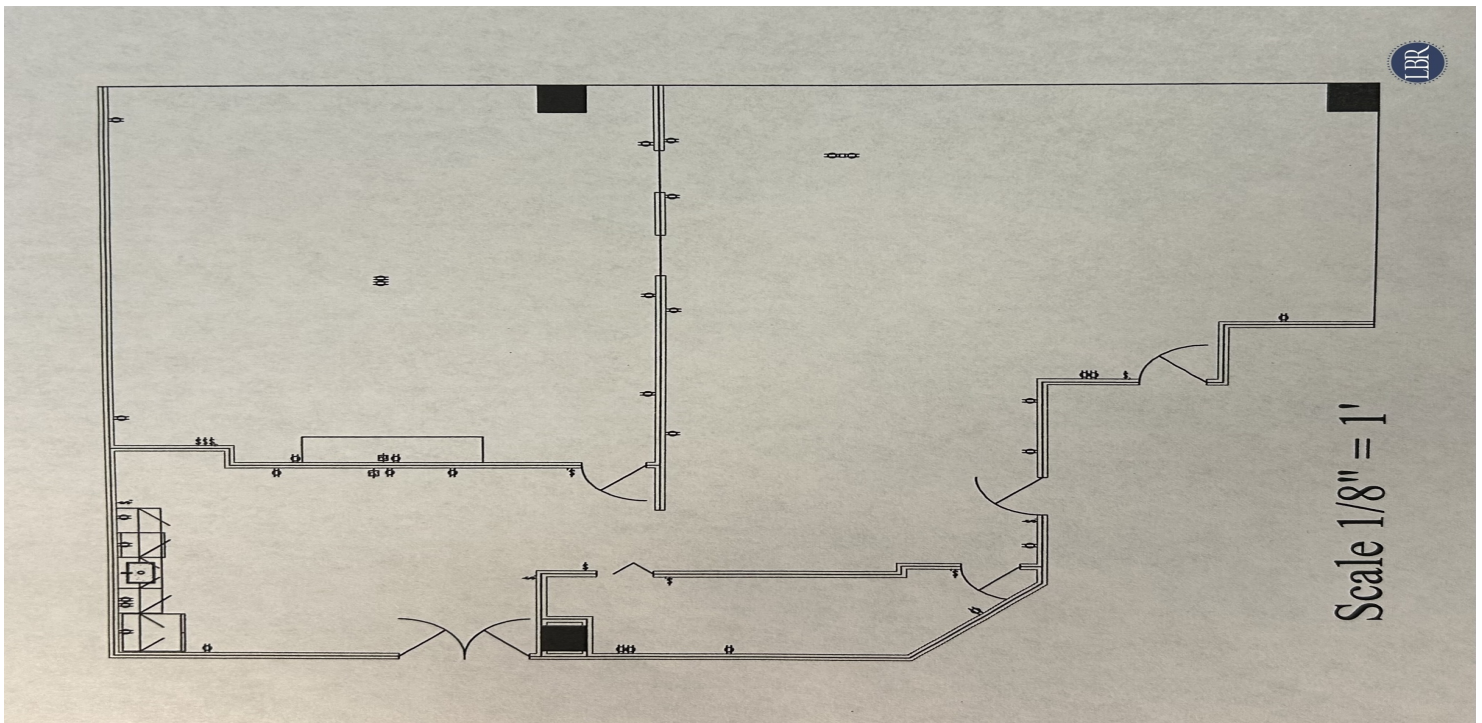
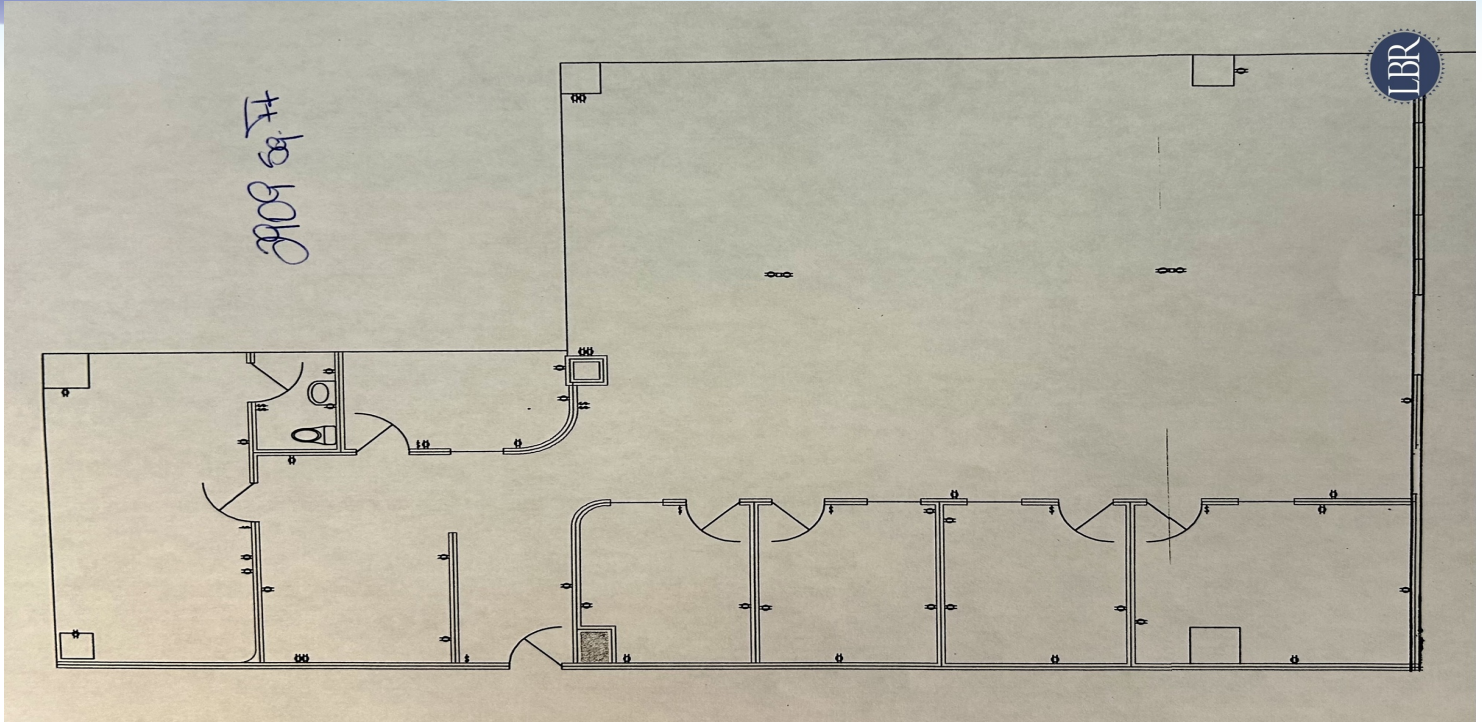
## Lightle Beckner Robison, Inc.

321.722.0707 • teamlbr.com  
70 W. Hibiscus Blvd.,  
Melbourne, FL 32901

Information contained herein has been obtained through sources deemed reliable but cannot be guaranteed as to its accuracy. A purchaser or lessee is expected to verify all information to his/her own satisfaction. Zoning information subject to change and not warranted. Always confirm current requirements with local governing agencies.

# SITE PLANS

One Harbor Place • 1901 S Harbor City Blvd Melbourne, FL 32901



## ROB BECKNER, SIOR

Principal  
321.722.0707 X11  
rob@teamlbr.com

## Lightle Beckner Robison, Inc.

321.722.0707 • teamlbr.com  
70 W. Hibiscus Blvd.,  
Melbourne, FL 32901

Information contained herein has been obtained through sources deemed reliable but cannot be guaranteed as to its accuracy. A purchaser or lessee is expected to verify all information to his/her own satisfaction. Zoning information subject to change and not warranted. Always confirm current requirements with local governing agencies.

# ADDITIONAL PHOTOS

One Harbor Place • 1901 S Harbor City Blvd Melbourne, FL 32901



Office View



One Harbor Place



Gym



Gym

## ROB BECKNER, SIOR

Principal  
321.722.0707 X11  
rob@teamlbr.com

## Lightle Beckner Robison, Inc.

321.722.0707 • teamlbr.com  
70 W. Hibiscus Blvd.,  
Melbourne, FL 32901

Information contained herein has been obtained through sources deemed reliable but cannot be guaranteed as to its accuracy. A purchaser or lessee is expected to verify all information to his/her own satisfaction. Zoning information subject to change and not warranted. Always confirm current requirements with local governing agencies.

# AVAILABLE SPACES

One Harbor Place • 1901 S Harbor City Blvd Melbourne, FL 32901

---

**Lease Rate:** \$25.00 SF/YR (GROSS)

**Total Space** 5,952 SF

**Lease Type:** Gross

**Lease Term:** Negotiable

SPACE	LEASE RATE	LEASE TYPE	SIZE (SF)
#710	\$25.00 SF/YR	Gross	5,952 SF

**ROB BECKNER, SIOR**

Principal  
321.722.0707 X11  
rob@teamlbr.com

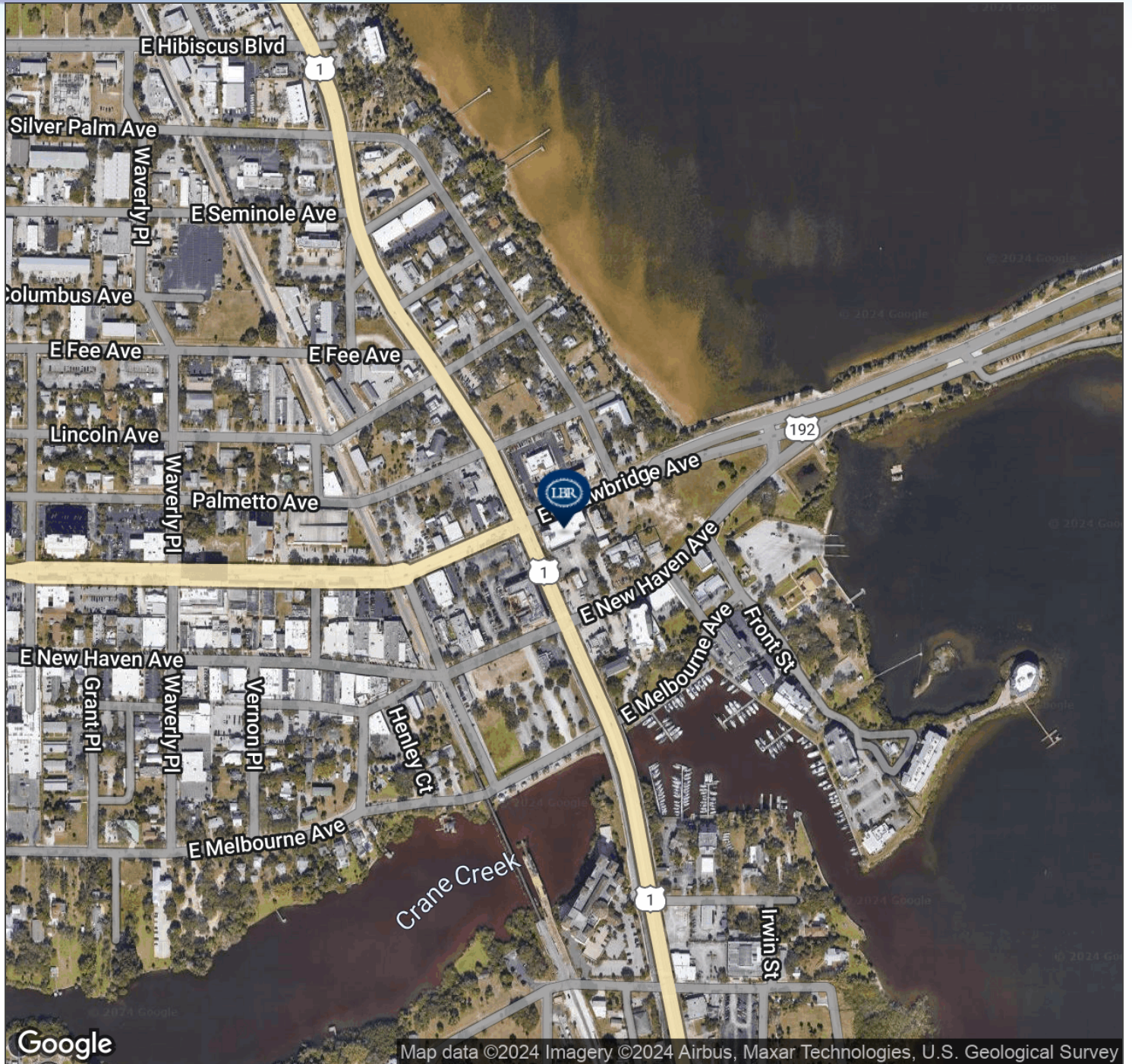
**Lightle Beckner Robison, Inc.**

321.722.0707 • teamlbr.com  
70 W. Hibiscus Blvd.,  
Melbourne, FL 32901

Information contained herein has been obtained through sources deemed reliable but cannot be guaranteed as to its accuracy. A purchaser or lessee is expected to verify all information to his/her own satisfaction. Zoning information subject to change and not warranted. Always confirm current requirements with local governing agencies.

# AERIAL MAP

One Harbor Place • 1901 S Harbor City Blvd Melbourne, FL 32901



## ROB BECKNER, SIOR

Principal  
321.722.0707 X11  
rob@teamlbr.com

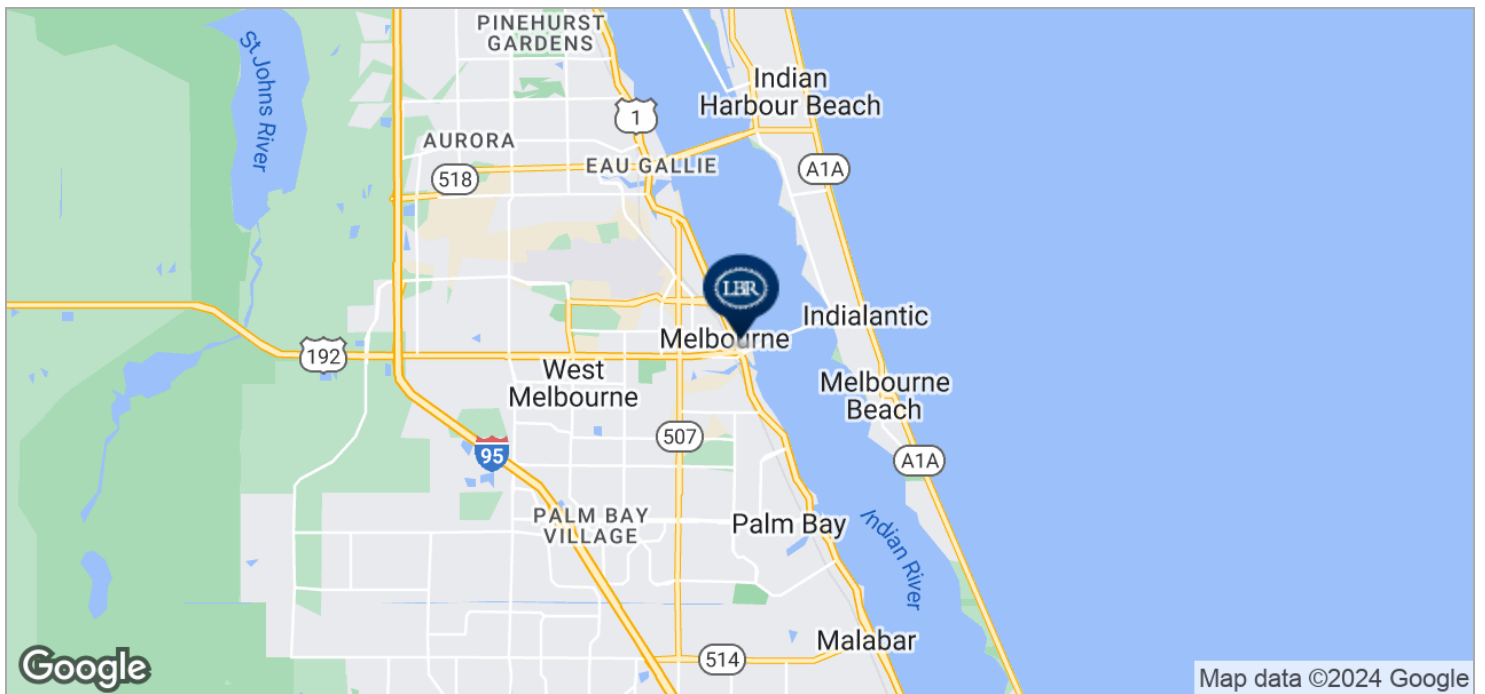
## Lightle Beckner Robison, Inc.

321.722.0707 • teamlbr.com  
70 W. Hibiscus Blvd.,  
Melbourne, FL 32901

Information contained herein has been obtained through sources deemed reliable but cannot be guaranteed as to its accuracy. A purchaser or lessee is expected to verify all information to his/her own satisfaction. Zoning information subject to change and not warranted. Always confirm current requirements with local governing agencies.

# LOCATION MAPS

One Harbor Place • 1901 S Harbor City Blvd Melbourne, FL 32901



## ROB BECKNER, SIOR

Principal  
321.722.0707 X11  
rob@teamlbr.com

## Lightle Beckner Robison, Inc.

321.722.0707 • teamlbr.com  
70 W. Hibiscus Blvd.,  
Melbourne, FL 32901

Information contained herein has been obtained through sources deemed reliable but cannot be guaranteed as to its accuracy. A purchaser or lessee is expected to verify all information to his/her own satisfaction. Zoning information subject to change and not warranted. Always confirm current requirements with local governing agencies.