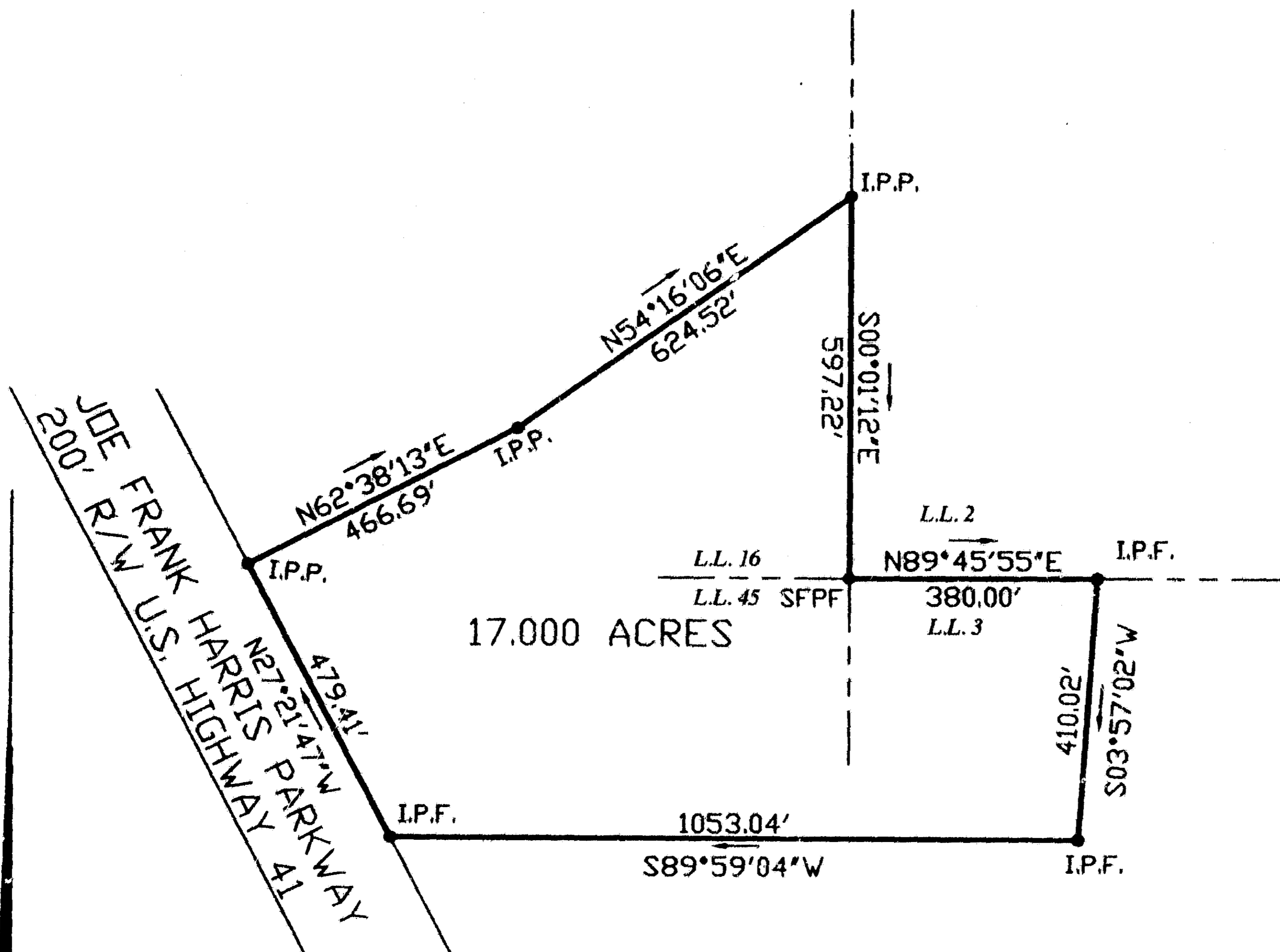


GEORGIA, BARTOW COUNTY  
CLERK'S OFFICE SUPERIOR COURT

Filed for record this 7 day of  
NOV 2022 at 1:10 o'clock P.  
Recorded in Plat record No. 55  
Page 151 of 2 pages  
NOV 2022

GARY HELL, Clerk

SURVEY FOR  
**GREGORY T. BOWEN**  
PROPERTY IN LAND LOTS 16, & 45  
16th DISTRICT, 3rd SECTION,  
AND LAND LOT 3,  
5th DISTRICT, 3rd SECTION,  
BARTOW COUNTY, GEORGIA



NOTE: THE NORTH LINE (624.52') WAS SURVEYED ON 4-01-2002  
AND THE SOUTH LINE (1053.20') WAS SURVEYED 5-17-95,  
ALL OTHER LINES WERE SURVEYED 1-14-94

FIELD TRAVERSE:  
CLOSURE; ONE FOOT IN 10,000 FEET  
USING A LIETZ SET 3.  
ANGULAR ERROR; 0°00'06" PER ANGLE  
POINT USING A LIETZ SET 3.  
ADJUSTED; USING THE COMPASS RULE.

SMITH & SMITH LAND SURVEYORS, P.C.  
2 SOUTH AVENUE, CARTERSVILLE, GA. 30120  
PHONE 770-382-0457

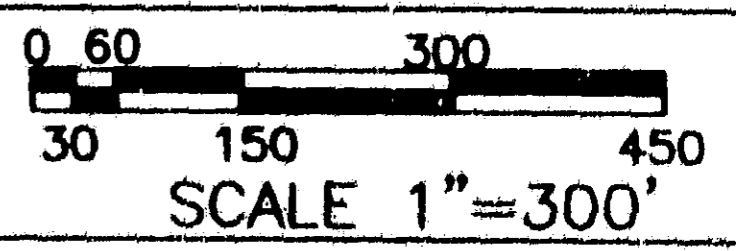
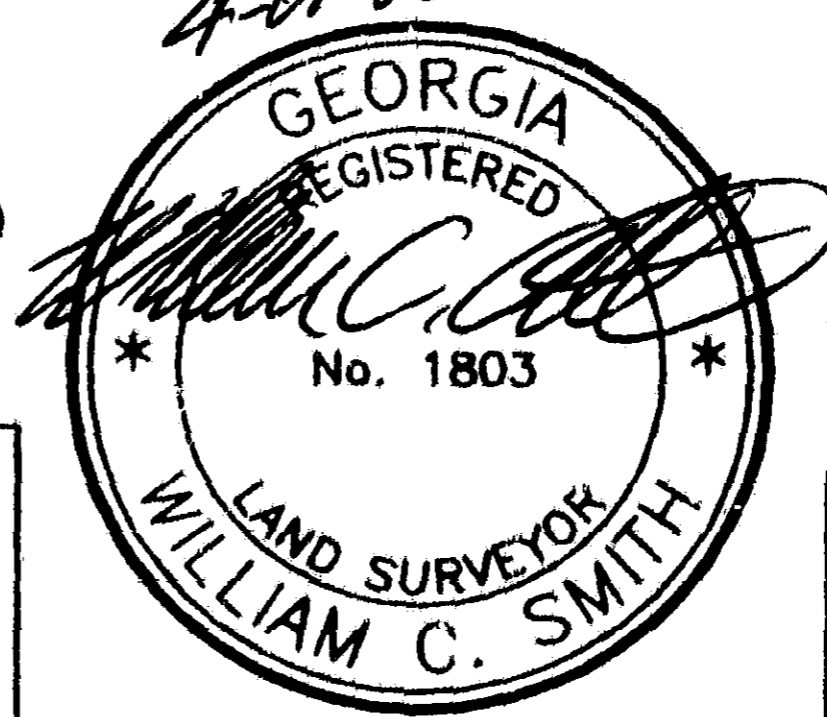
REGISTERED LAND SURVEYOR No. 1803

4098.ASC 4098-8.DWG  
NOTE: IRON PINS ARE (1/2" RE-BAR)  
EXCEPT AS SHOWN.

PLAT CLOSURE;  
ONE FOOT IN  
481.855 FEET.

MAY 17, 1995  
REVISED 4-01-2002

R/W — RIGHT OF WAY	R — RADIUS LP — LIGHT POLE
I.P.P. — IRON PIN PLACED	-X-X- FENCE
I.P.F. — IRON PIN FOUND	— LAND LOT LINE
CM — CONCRETE MARKER	⊙ — CENTER LINE
CH. — CHORD	* — POWER LINE
L OR A — LENGTH OF CURVE	PP — POWER POLE



FILE 4098-8

MAG. NORTH