



VACANT LAND FOR SALE

Avalon Park Blvd, Orlando, FL 32828

Lakefront commercial/residential site for sale

PROPERTY HIGHLIGHTS

- One of the last remaining infill sites available in Avalon Park.
- Lakefront frontage along Avalon Park Blvd.
- Development opportunity for owner/user.
- Surrounded by dense, high demand residential development.
- Less than 2 miles north of Downtown Avalon Park.
- Entitlements - 21 residential units and _____ commercial square feet.



ASKING PRICE:
\$350,000



LAND AREA:
0.5± acres



ZONING:
PD



ACCESS:
Easy access to SR 50, SR 408, SR 417



DARRYL DOTHEROW, CCIM
ddotherow@harbertrealty.com | 407.377.4075

DAMIEN MADSEN
dmadsen@harbertrealty.com | 407.256.2844

For More Information: HarbertRealty.com
400 S Park Ave., Suite 225, Winter Park, FL 32789

The information contained herein has been obtained from sources deemed reliable, however, HRS makes no guarantees, warranties or representation as to its completeness or accuracy thereof. The presentation of this property is submitted subject to errors, omissions, change of price or conditions, prior to sale or lease or withdrawal without notice.

VACANT LAND FOR SALE

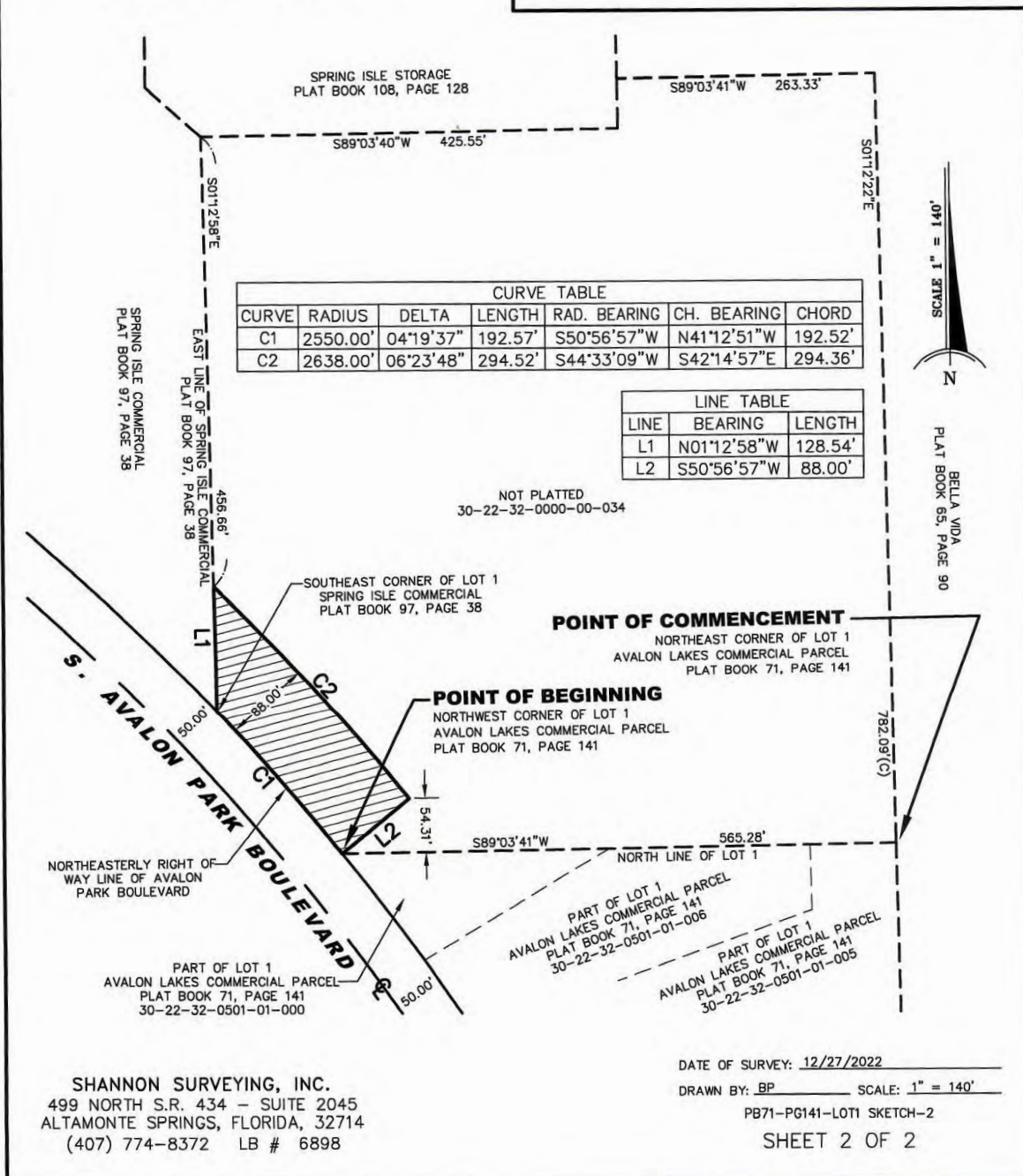
Avalon Park Blvd, Orlando, FL 32828

SURVEY

SKETCH OF DESCRIPTION

PROJECT NAME: AVALON PARK BOULEVARD

THIS IS NOT A BOUNDARY SURVEY
NOT VALID WITHOUT SHEET 1



SHANNON SURVEYING, INC.
499 NORTH S.R. 434 - SUITE 2045
ALTAMONTE SPRINGS, FLORIDA, 32714
(407) 774-8372 LB # 6898

DATE OF SURVEY: 12/27/2022
DRAWN BY: BP SCALE: 1" = 140'
PB71-PG141-LOT1 SKETCH-2
SHEET 2 OF 2



HARBERT
REALTY SERVICES

DARRYL DOTEROW, CCIM
ddoterow@harbertrealty.com | 407.755.4075

DAMIEN MADSEN
dmadsen@harbertrealty.com | 407.256.2844

For More Information: HarbertRealty.com
400 S Park Ave, Suite 225
Winter Park, FL 32789